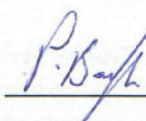


## **FAR 3401**

### **FIRE RESISTANCE OF TVC-CORE MINI AND MAXI ACCESS PANELS**

**Author:** P. Bano-Chapman  
Senior Fire Testing Engineer



**Reviewer:** E. Soja  
Senior Fire Engineer



**Contact:** BRANZ Limited  
Moonshine Road  
Judgeford  
Private Bag 50908  
Porirua City  
New Zealand  
Tel: +64 4 237 1170  
Fax: +64 4 237 1171  
www.branz.co.nz

BRANZ's agreement with its Client in relation to this report contains the following terms and conditions in relation to **Liability and Indemnification**

a. Limitation and Liability

- i. BRANZ undertakes to exercise due care and skill in the performance of the Services and accepts liability to the Client only in cases of proven negligence.
- ii. Nothing in this Agreement shall exclude or limit BRANZ's liability to a Client for death or personal injury or for fraud or any other matter resulting from BRANZ's negligence for which it would be illegal to exclude or limit its liability.
- iii. BRANZ is neither an insurer nor a guarantor and disclaims all liability in such capacity. Clients seeking a guarantee against loss or damage should obtain appropriate insurance.
- iv. Neither BRANZ nor any of its officers, employees, agents or subcontractors shall be liable to the Client nor any third party for any actions taken or not taken on the basis of any Output nor for any incorrect results arising from unclear, erroneous, incomplete, misleading or false information provided to BRANZ.
- v. BRANZ shall not be liable for any delayed, partial or total non-performance of the Services arising directly or indirectly from any event outside BRANZ's control including failure by the Client to comply with any of its obligations hereunder.
- vi. The liability of BRANZ in respect of any claim for loss, damage or expense of any nature and howsoever arising shall in no circumstances exceed a total aggregate sum equal to 10 times the amount of the fee paid in respect of the specific service which gives rise to such claim or NZD\$50,000 (or its equivalent in local currency), whichever is the lesser.
- vii. BRANZ shall have no liability for any indirect or consequential loss (including loss of profits).
- viii. In the event of any claim the Client must give written notice to BRANZ within 30 days of discovery of the facts alleged to justify such claim and, in any case, BRANZ shall be discharged from all liability for all claims for loss, damage or expense unless legal proceedings are commenced in respect of the claim within one year from:
  - The date of performance by BRANZ of the service which gives rise to the claim; or
  - The date when the service should have been completed in the event of any alleged non-performance.

b. Indemnification: The Client shall guarantee, hold harmless and indemnify BRANZ and its officers, employees, agents or subcontractors against all claims (actual or threatened) by any third party for loss, damage or expense of whatsoever nature including all legal expenses and related costs and howsoever arising relating to the performance, purported performance or non-performance, of any Services.

c. Without limiting clause b above, the Client shall guarantee, hold harmless and indemnify BRANZ and its officers, employees, agents or subcontractors against all claims (actual or threatened) by any party for loss, damage or expense of whatsoever nature including all legal expenses and related costs arising out of:

- i. any failure by the Client to provide accurate and sufficient information to BRANZ to perform the Services;
- ii. any misstatement or misrepresentation of the Outputs, including Public Outputs;
- iii. any defects in the Products the subject of the Services; or
- iv. any changes, modifications or alterations to the Products the subject of the Services.





## **FIRE RESISTANCE OF TVC-CORE MINI AND MAXI ACCESS PANELS**

### **1. CLIENT**

Firecore Pty Ltd  
291 Warringah Rd  
Beacon Hill NSW 2100  
Australia

### **2. INTRODUCTION**

This assessment report gives BRANZ's assessment of the fire resistance of the Firecore TVC-Core Mini and Maxi access panels. The panels are based on Firecore TVC30 (mini) and TVC40 (maxi) fire resistance doorsets tested in accordance with AS 1530.4 with the exception that all access panel frames are four sided whereas the tested doorsets were in three sided frames.

The access panels are either side hung or screw fixed into the steel frames in either fire rated masonry or plasterboard walls. Table 1 (Mini) and 2 (Maxi) lists the various configurations considered and Figure 1 and 2 the construction details.

The supporting test data for this assessment was produced prior to the publication date of AS 1530.4-2005 therefore this assessment is to AS 1530.4-1997 which remains valid under Specification A1.3 of the BCA.

### **3. BACKGROUND**

Firecore Pty Ltd has conducted various fire resistance tests and assessments on TVC-Core Mini and Maxi doorsets which have achieved up to a fire resistance level of -/240/30. Table 1 and 2 lists the supporting tests and assessments as relevant to each system.

### **4. DISCUSSION**


#### **4.1 General**

All the access panels are based on tested and assessed Firecore's TVC-Core doorsets. The doorsets were tested in three sided construction whereas the access panels are to be four sided. It is considered as long as the construction details to the fourth edge is the same as the other edges that represents no additional hazard than the tested doorsets.

Hardware which has been previously approved for use with the TVC-Core doorsets are considered to be suitable to be used on the access panels. This is limited to either the fire rating of the access panel or rating of the items of hardware, whichever is the lesser.

  
PBC

ES 

	Report Number: FAR 3401	Date of Issue: 116 November 2009	Page 3 of 8 Pages
---	-------------------------	----------------------------------	-------------------

## **4.2 Frame details**

### **4.2.1 Steel frame**

The steel frame consists of a single rebated steel section of either 1.1 mm or 1.4 mm thick for the Mini and Maxi access panel respectively. The frame is to be secured to the wall through the stop with masonry anchors/screws at 300 mm centres.

### **4.2.2 Angle frame**

The angle frame consists of a mild steel angle nominally 40 mm x 40 mm x 1.4 mm thick welded at the corners and secured to the wall at 300 mm centres. The angle frame is to be used only where the access panels are screw fixed. Where the angle frame is used for a drywall partition a double angle shall be used (see Figure 2). The angle are to be back to back with one angle forming the frame rebate and the other to be secured to the edge of the opening in the wall. Where the angle frame is to be used with a masonry wall a single angle may be used.

## **5. CONCLUSION**

It is considered that the Firecore TVC- Mini and Maxi access panels for masonry walls and drywall partitions listed under Table 1 and 2 and shown in Figure 1 and 2 would provide a fire resistance level as detailed in Table 1 and 2 column "FRL" if tested in accordance with AS 1530.4-1997.

## **6. LIMITATIONS**

This assessment is subject to the completeness and accuracy of the information supplied.

BRANZ reserves the right to amend or withdraw this assessment should additional information become available regarding the fire performance of the items assessed in this report.



**Table 1 Firecore access panels in Masonry and Drywall partitions Mini**

System	Max size (height x width)	Frame	Facings	Details	FRL	Supporting tests and assessments
APMINI- 01FH	Single 2400mm x 1200mm	1.1mm sided frame (unfilled)	3-4mm MDF or untreated plywood	Hinges: 2 hinges up to 1200mm high and 3 hinges up to 2400mm high Lockset: Fire rated lockset	-/60/30	FSV0934 FSV1001 FCO2201 FCO2740
APMINI- 01FS	Single 2400mm x 1200mm	1.1mm sided frame (unfilled)	3-4mm MDF or untreated plywood	Screw fixed around the perimeter at maximum 600mm centres	-/60/30	FSV0934 FSV1001 FCO2201 FCO2740
APMINI- 01AS	Single 2400mm x 1200mm	40mm x 40mm x 1.4mm four sided steel angle frame	3-4mm MDF or untreated plywood	Screw fixed around the perimeter at maximum 600mm centres	-/60/30	FSV0934 FSV1001 FCO2201 FCO2740
APMINI- 02FH	Single 2400mm x 1200mm	1.1mm sided frame (unfilled)	3-4mm Masonite, Dura- cote or treated plywood	Hinges: 2 hinges up to 1200mm high and 3 hinges up to 2400mm high Lockset: Fire rated lockset	-/120/30	FSV1348 FSV0939 FCO2201 FCO2740
APMINI- 02FS	Single 2400mm x 1200mm	1.1mm sided frame (unfilled)	3-4mm Masonite, Dura- cote or treated plywood	Screw fixed around the perimeter at maximum 600mm centres	-/120/30	FSV1348 FSV0939 FCO2201 FCO2740

PBC

ES



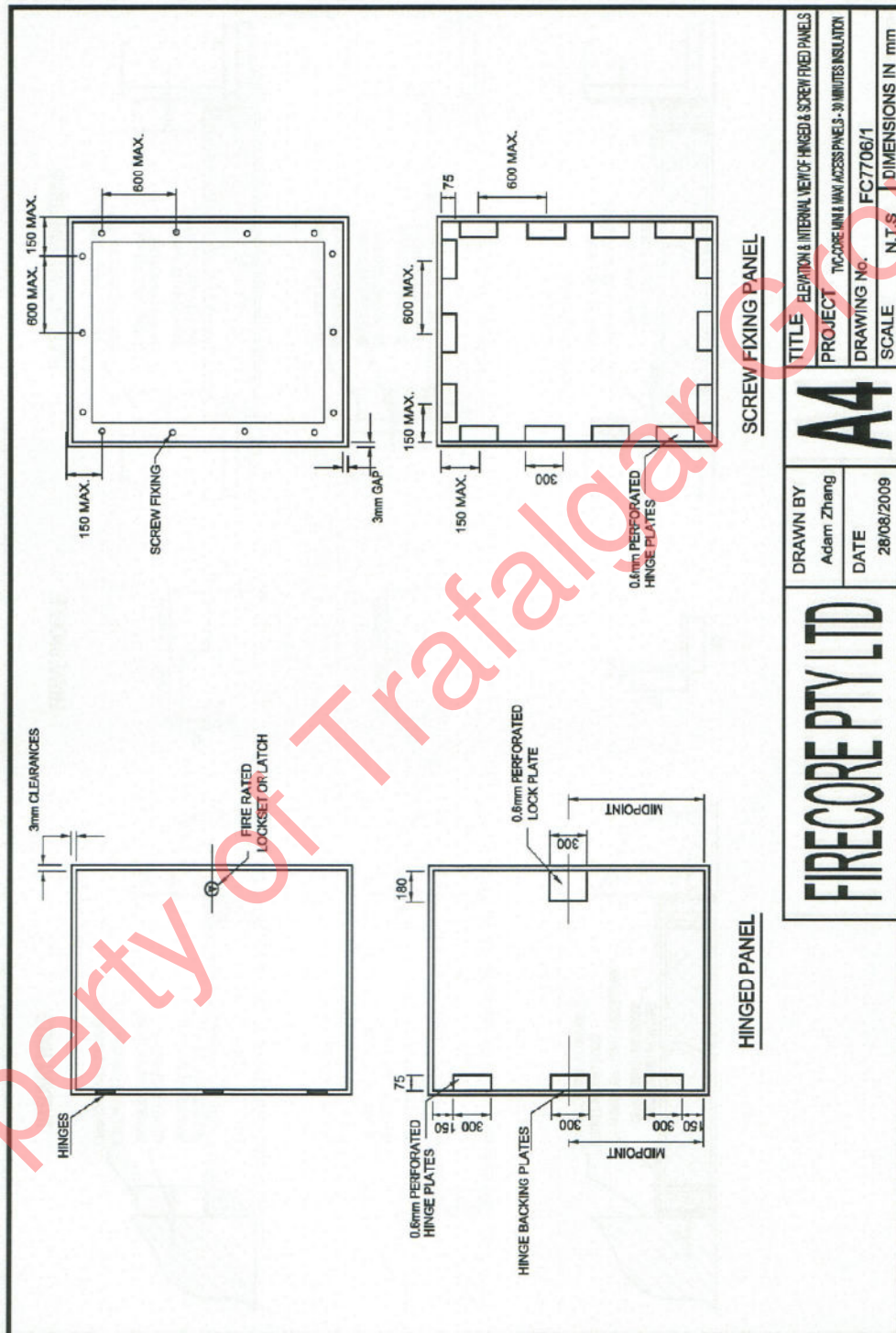
**Table 2 Firecore access panels in Masonry and Drywall partitions Maxi**

System	Max size (Height x Width)	Frame	Facings	Details	FRL	Supporting tests and assessments
APMAXI-01FH	Single 2400mm x 1200mm	1.4mm sided steel frame (unfilled)	3-4mm MDF or untreated plywood	Hinges: 2 hinges up to 1200mm high and 3 hinges up to 2400mm high Lockset: Fire rated lockset	-/60/30	FSV0934 FSV1001 FCO2201 FCO2740
APMAXI-01FS	Single 2400mm x 1200mm	1.4mm sided steel frame (unfilled)	3-4mm MDF or untreated plywood	Screw fixed around the perimeter at maximum 600mm centres	-/60/30	FSV0934 FSV1001 FCO2201 FCO2740
APMAXI-01AS	Single 2400mm x 1200mm	40mm x 40mm x 1.4mm four sided steel angle frame	3-4mm MDF or untreated plywood	Screw fixed around the perimeter at maximum 600mm centres	-/60/30	FSV0934 FSV1001 FCO2201 FCO2740
APMAXI-02FH	Single 2400mm x 1200mm	1.4mm sided steel frame (unfilled)	3-4mm Masonite, Dura-cote or treated plywood	Hinges: 2 hinges up to 1200mm high and 3 hinges up to 2400mm high Lockset: Fire rated lockset	-/120/30	FSV1348 FSV0939 FCO2201 FCO2740
APMAXI-02FS	Single 2400mm x 1200mm	1.4mm sided steel frame (unfilled)	3-4mm Masonite, Dura-cote or treated plywood	Screw fixed around the perimeter at maximum 600mm centres	-/120/30	FSV1348 FSV0939 FCO2201 FCO2740
APMAXI-02FH	Single 2400mm x 1200mm	1.4mm sided steel frame (filled)	3-4mm Masonite, Dura-cote or treated plywood	Hinges: 2 hinges up to 1200mm high and 3 hinges up to 2400mm high Lockset: Fire rated lockset	-/240/30	FSV1348 FSV0939 FCO2201 FCO2740
APMAXI-02FS	Single 2400mm x 1200mm	1.4mm sided steel frame (filled)	3-4mm Masonite, Dura-cote or treated plywood	Screw fixed around the perimeter at maximum 600mm centres	-/240/30	FSV1348 FSV0939 FCO2201 FCO2740

PBC

ES

Figure 1 Client supplied drawing – Typical construction



PBC

ES



Figure 2 Client supplied drawing – Typical plan section

