

WALSC

AAC Panel Systems



Walsc AAC Panel Systems are comprised of reinforced Autoclaved Aerated Concrete (AAC). The National Construction Code (NCC) requires fire-stopping systems to be fire-tested and/or assessed to determine the FRL of the specific penetration in different walls. The Trafalgar Fire products in this technical manual have been tested and approved to AS1530.4-2014 specifically for use in Walsc AAC Panel Systems, providing compliance under the National Construction Code (NCC).



PRODUCTS



 **FyreBOX**

 **FyreCOLLAR** PREMIUM RETROFIT

 **FyreFLEX**

 **FyrePEX**HP

 **FyrePLUG**

 **FyreSHIELD**

 **TWRAP**

APPLICATIONS



Builders

Access Panels

Electricians

Power Cables
Data cables
PVC Conduits

HVAC&R

Insulated pipes

Plumbers

Copper and Steel pipes
PEX pipes
PEX-AL-PEX pipes

Fire Professionals

Sprinkler pipes
Fire Cables

TRADES

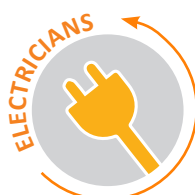


TABLE OF CONTENTS



Section	Trade/s	Page
Compliance		3
FRL Tables	Fyre Sealant Range	4
	FyreBOX™ Slab-Mount	5
	FyreBOX™ Maxi & Mini	6
	FyreSHIELD™ Access Panel	7
	FyreCHOKE Premium Hinged Retrofit	8
	FyrePLUG Pillows	8
Related Systems		9

WALSC AAC PANEL SYSTEMS



COMPLIANCE WITH THE NATIONAL CONSTRUCTION CODE (NCC)

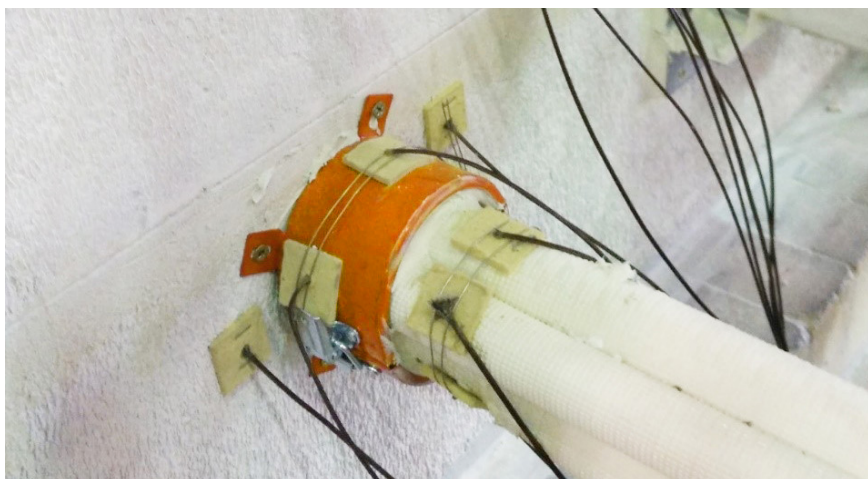
Formerly known as BCA

Walsc AAC panel systems are very popular in the Australian building industry due to the reduction in overall wall thickness, speed of construction and their acoustic and fire-resistant properties.

Trafalgar Fire is committed to innovation within the passive fire industry and as such have been developing new products and re-testing existing technologies, specifically designed to maintain the fire resistance level (FRL) of service penetrations through Walsc AAC panel systems.

Walsc AAC panel system is a proprietary panel system comprised of reinforced autoclaved aerated concrete (AAC). AS1530.4 requires walls made of AAC to be fire-tested to determine the FRL of the specific service penetration.





The Trafalgar Fire systems in this document have been fire tested and approved specifically for use in AAC wall systems, providing full compliance with the NCC. Refer to www.tfire.com.au for a full list of test reports and product technical manuals.



FYRE SEALANTS RANGE

FyreFLEX® Sealant & FyrePEX HP Intumescent Mastic Sealant



Applications		Trade	System	Details	FRL	
Small Cable Bundles			FyreFLEX® Sealant	For specific system and FRL details refer to the: FyreFLEX and TWRAP for Electricians Technical Manual	-120/120	
Large Cable Bundles					-/120/120	
Cable Trays					-/120/120	
Steel Pipes	90min		FyreFLEX® Sealant TWRAP	FyreFLEX and TWRAP for Plumbers Technical Manual	-/90/90	
Cooper Pipes	90min			TWRAP Technical Manual	-/90/90	
Steel Pipes	120min		FyreFLEX® Sealant FyreBOARD Maxilite™ TWRAP	Available from the Trafalgar Fire Knowledge Centre Technical Manuals page on the website.	-/120/120	
Cooper Pipes	120min				-/120/120	
PEX Pipes				FyrePEX HP	For specific system and FRL details refer to the: FyrePEX HP Technical Manual TWRAP Technical Manual	-/120/120
PEX-AL-PEX pipes						-/120/120
Air-conditioning bundle (FR or FE insulation)		-/120/120				
Insulated Metal Pipes	up to 32mm	Available from the Trafalgar Fire Knowledge Centre Technical Manuals page on the website.			-/120/120	
PVC Conduits					-/120/120	







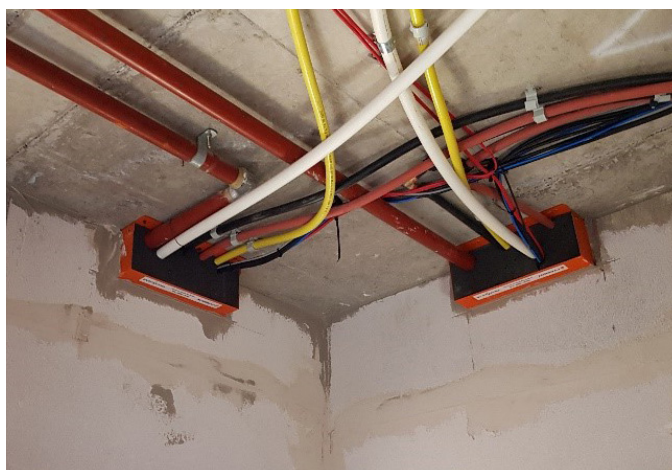
FyreBOX™ Slab-Mount

APARTMENT ENTRY MIXED SERVICE PENETRATIONS

FyreBOX SLAB-MOUNT



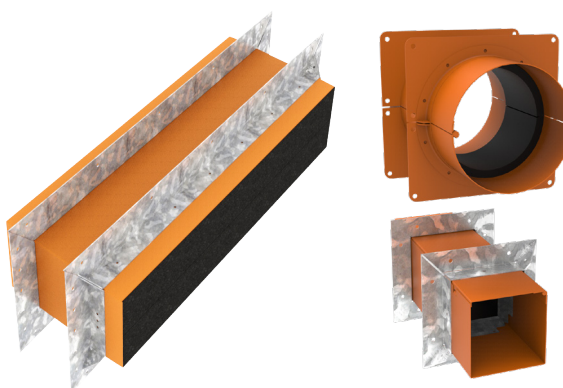
Applications	Trade	System	Details	FRL
Apartments services Any quantity of typical apartment entry services: <ul style="list-style-type: none"> electrical and data PVC conduit PEX gas PEX pipes insulated pair coil sprinkler pipes etc. 	   	FyreBOX™ Slab-Mount Available Sizes: <ul style="list-style-type: none"> 160 x 125mm 350 x 125mm 550 x 125mm 650 x 125mm Custom up to 1100 x 125mm 	Installed to the slab soffit before the walls are constructed. Allows service trades to run their pipes and cables quicker/sooner, speeding up build time and reducing risk of defects on site. Rw50 acoustic rating. For specific system and FRL details refer to the: FyreBOX™ Slab-Mount Technical Manual Available from the Trafalgar Fire Knowledge Centre Technical Manuals page on the website.	-/60/60 -/90/90 -/120/120
Riser shaft services Any quantity or configuration of typical riser shaft services				
2 hour wall applications Any quantity or configuration of approved services				








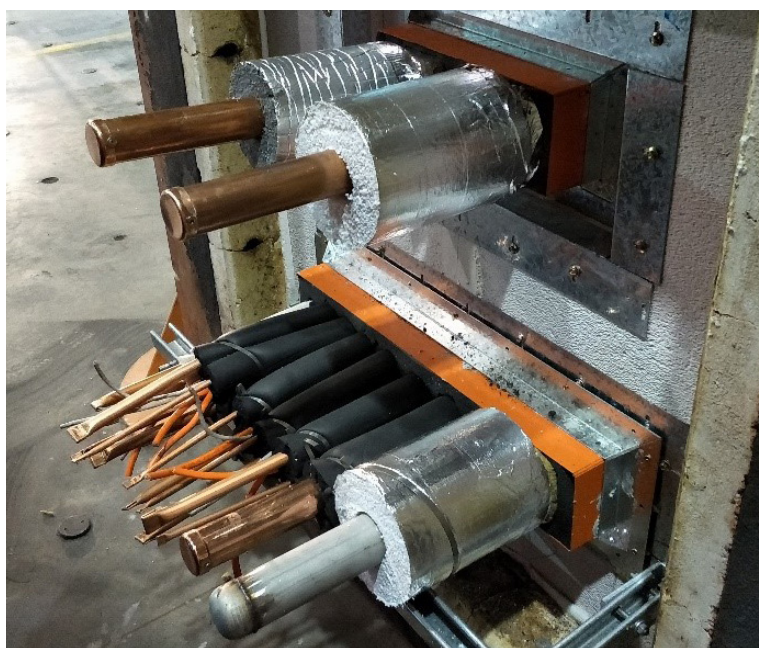
FyreBOX™ Maxi & Mini

RETRO-FIT

FyreBOX^{MAXI} & FyreBOX^{MINI}



Applications	Trade	System	Details	FRL
Small services Any including: <ul style="list-style-type: none"> electrical and data PVC conduit PEX gas PEX pipes insulated pair coil 	   	FyreBOX™ Mini Square sizes: <ul style="list-style-type: none"> 65mm 100mm Round sizes: <ul style="list-style-type: none"> 100mm 150mm 	Mounted anywhere in the wall with steel mounting flanges (FyreFLANGE), hinged for easy retrofit. For specific system and FRL details refer to the: FyreBOX™ Maxi and Mini Technical Manual	-/120/120
Large services Any including large quantities of: <ul style="list-style-type: none"> insulated/bare copper steel metal pipes cable trays conduits 		FyreBOX™ Maxi Available Sizes: <ul style="list-style-type: none"> 350 x 125mm 550 x 125mm 650 x 125mm 750 x 125mm 1100 x 125mm 	Available from the Trafalgar Fire Knowledge Centre Technical Manuals page on the website.	-/120/120



FyreSHIELD™

2 WAY TESTED FIRE RATED ACCESS PANEL



Applications	Trade	System	Details	FRL*
Access Panels	 	FyreSHIELD™ Sizes: <ul style="list-style-type: none">• 300 x 300mm• 400 x 400mm• 450 x 450mm• 550 x 550mm• 600 x 600mm• Custom any size up to 600 x 600mm	For specific system and FRL details refer to the: FyreSHIELD™ Technical Manual Available from the Trafalgar Fire Knowledge Centre Technical Manuals page on the website	-/60/60 or -/90/30

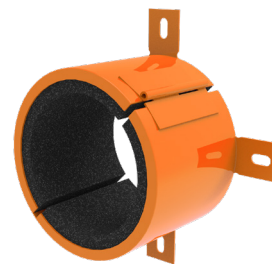
* Shaft walls only require 30 minutes insulation as per NCC C3.13



**Fully Insulated
2-Way Fire Protection**

* Patent Pending

FyreCHOKE PREMIUM HINGED RETROFIT FIRE COLLARS



FyreCHOKE PREMIUM HINGED
RETROFIT

Applications	Trade	System	Details	FRL
PVC Conduits		FyreCHOKE Premium Hinged Retrofit	For specific system and FRL details refer to the: FyreCHOKE Technical Manual Available from the Trafalgar Fire Knowledge Centre Technical Manuals page on the website	-120/120
PVC Pipes				-/120/120
PEX pipes				-/120/120
PEX-AL-PEX pipes				-/120/120
Air-conditioning bundle (FR or FE insulation)				-/120/120

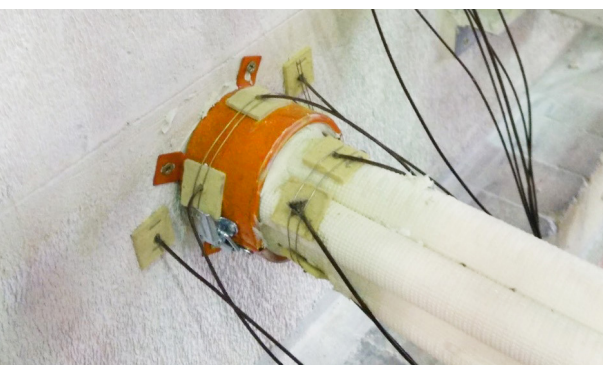
FyrePLUG®

FIRE PILLOWS



FyrePLUG

Applications	Trade	System	Details	FRL
Electrical and Data Cables		FyrePLUG Pillows	For specific system and FRL details refer to the: FyrePLUG Technical Manual Available from the Trafalgar Fire Knowledge Centre Technical Manuals page on the website	-120/120
PVC Conduit				-/120/120
Metal pipes				-/120/120



RELATED SYSTEMS

FyreBOX MINI



FyreBOX MAXI



FyreBOX SLAB-MOUNT



FyreFLEX



FyrePEX HP



FyrePLUG



FyreSHIELD



TWRAP



FyreCOLLAR PREMIUM RETROFIT

