



ELECTRICAL SERVICES GUIDE

SuperSTOPPER® Slab-Mount



The SuperSTOPPER® Slab Mount Bambino is a head of wall service penetration system specifically manufactured for individual trades to simplify passive fire by allowing installation of pipe and cable services before the wall construction, providing predictable site costs with the independence from other contractors schedules, and a reliable method of fire stopping.



KEY FEATURES

- Allows for mixed service types (cables and conduits) with no separation required
- Additional services can be installed throughout the life of the building
- Suitable for NBN conduits
- Services can be installed, charged & tested without waiting for wall construction to begin
- Suitable for apartment SOU entry, and riser shaft penetrations
- Fully tested and compliant to AS1530.4-2014
- Training and support provided
- Fire, smoke and acoustic seal

APPROVED SERVICES

Power	Copper core cables Al core cables
Data/Comms	Firesense CAT5 & CAT6 RG6
Conduits (PVC)	NBN (or other fiber) Power or data

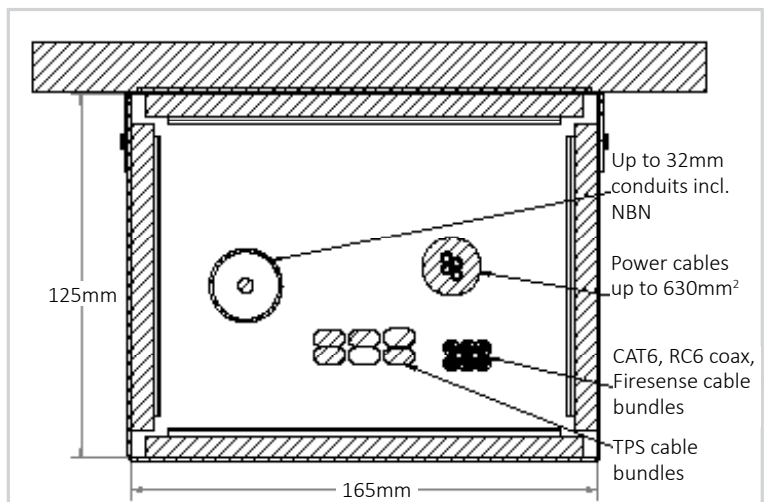


TABLE OF CONTENTS

Click
page title to go to
Page



Section		Page
WHY SuperSTOPPER® for Electrical Service Trades		4
SuperSTOPPER® Benefits- 30% Labour Savings		5
System Selector		6
Fire Resistance Level		7
FRL Tables	60 Minute Plasterboard Stud Walls: WRAP FREE	8
	60 Minute Walsc® AAC Panel: WRAP FREE	9
	60 Minute Concrete, Masonry and Permanent Formwork Walls: WRAP FREE	10
	60 Minute IntrWall & Other Party Wall Systems	11
	60 Minute XCEM Alpha Panel walls	12
	90 Minute Walsc® AAC Panel	13
	90 Minute Plasterboard Stud Walls	14
	90 Minute Laminated Plasterboard Shaft Walls	15
	90 Minute XCEM Alpha Panel Walls	16
	120 Minute Plasterboard Stud Walls	17
	120 Minute Concrete, Masonry and Permanant Formwork Walls	18
	120 Minute Walsc® AAC Panels	19
	Speedpanel® Walls	20
	Trafalgar COREX Shaft Walls	21
Maxilite Board Bulkheads & Oversized Penetrations	22	
Installation Manual	Stage 1: Slab-Mount the SuperSTOPPER®- All Walls	23
	Stage 2: Wall Installation- Plasterboard and COREX	24
	Stage 2: Wall Installation- Walsc® and Hebel AAC Panel Wall	25
	Stage 2: Wall Installation- AlphaPanel	26
	Stage 2: Wall Installation- Speedpanel®	27
	Stage 3: Foam Installation- All Walls	28
	Stage 4: Wrapping- All Walls	29

TABLE OF CONTENTS



Section	Page	
Installation Manual	Installation Alternatives: Riser Shaft	30
	Installation Alternatives: Stepped slab, Wall junctions, oversized openings	31
	Installation Alternatives: SuperSTOPPER® Double Vertical	32
	Installation Alternatives: SuperSTOPPER® Double Horizontal	33
	Installation Alternatives: InTRWall/Party Walls	34
	Installation Checklist- Plasterboard	35
	Installation Checklist- Walsc® and Hebel AAC Panel Wall	36
System Range	37	
Compliance	38	
Technical Drawings	Product Overview	39
	Installation Overview	40
	Plasterboard Framing Details	41
	Standard Plasterboard Walls	42
	Plasterboard Walls- Built From One Side Only	43
	Shaftliner Walls	44-45
	Hebel®/Walsc® and AAC Walls- Openings up to 400x170mm	46
	Hebel®/Walsc® and AAC Walls- Openings greater than 400x170mm	47
	Hebel® Walls- FR Plasterboard Lining	48
	SpeedPanel® Walls	49
	SpeedPanel® Walls Less Than 78mm Thick	50
	Concrete / Masonry Walls	51
	FyreBOARD™ Maxilite	52
	TWRAP™ - Services Wrap	53
	TWRAP™ - 3-Sided Wrap	54
	SuperSTOPPER® Slab-Mount Stacked Horizontal	55
	SuperSTOPPER® Slab-Mount Stacked Vertical	56
	TWRAP™ - Services Horizontal	57
	TWRAP™ - Stacked Vertical	58
	SuperSTOPPER Slab Mounted installed with access from one side	59
SuperSTOPPER In Close Proximity- Walls	60	

Why SuperSTOPPER® for Electrical Services?

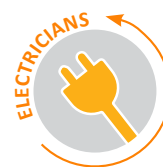
In residential and commercial constructions, the electrical/data trades are often the first on site to start running temporary and permanent cabling systems cables underneath the slab soffit, before the fire compartment walls have been erected. This results in additional work for the sparkies who have to come back to install the passive fire penetration seals, which commonly results in defects where services are left penetrating through the head tracks of the fire wall. Alternatively, the cable rough in needs to wait until the fire walls are installed first, delaying progress.

The innovative Trafalgar SuperSTOPPER® Slab Mount BAMBINO (lower right) addresses these issues by providing a small footprint penetration system that can be installed before the walls are erected, allowing for the power, comms and data cables to be roughed in, commissioned and charged without waiting for the wall contractors. This includes PVC conduits as well!

The SuperSTOPPER® systems are tested with all common cable services for residential and commercial projects through one simple penetration system providing FRL's from -/60/60 (wrap free) up to -/120/120 with TWrap. The SuperSTOPPER® systems have been tested located at the head track/deflection heads in FULL SCALE wall tests to confirm their suitability in these locations.

BENEFITS

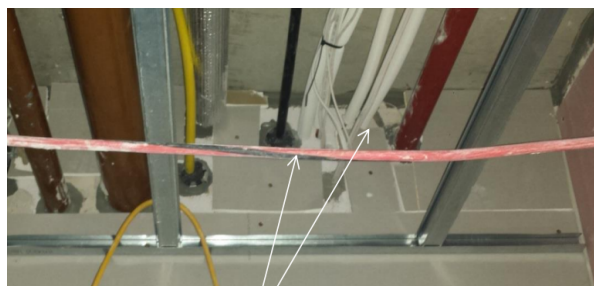
- Install cables before the fire walls
- No need for wraps (in most walls)
- Charge, test and commission services quicker
- Reduced defects
- Predictable fire stopping costs
- NCC 2022 Ready
- Thoroughly fire tested to AS1530.4-2014
- Visible and reliable compliance
- Space saving - gives one penetration point per apartment
- Suitable for SOU and riser shaft penetrations
- Multi-service solution
- Maintains acoustic rating
- Saves time and labour for builders and service trades



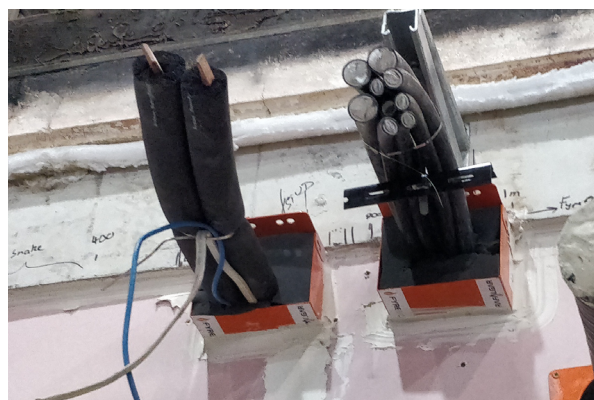
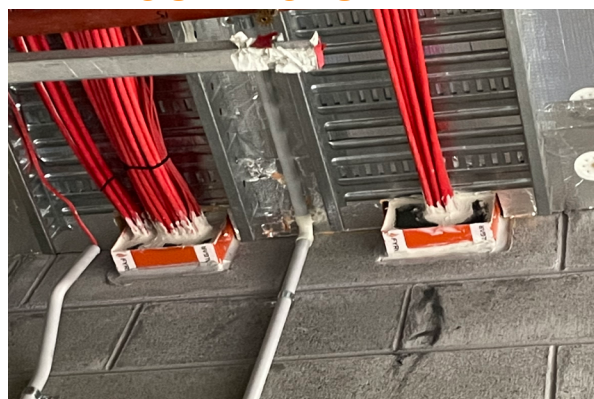
WITHOUT



Traditional sealant penetration systems need the fire walls to be installed first, and often clash with other services causing defects in cramped ceiling spaces.



WITH SUPERSTOPPER®



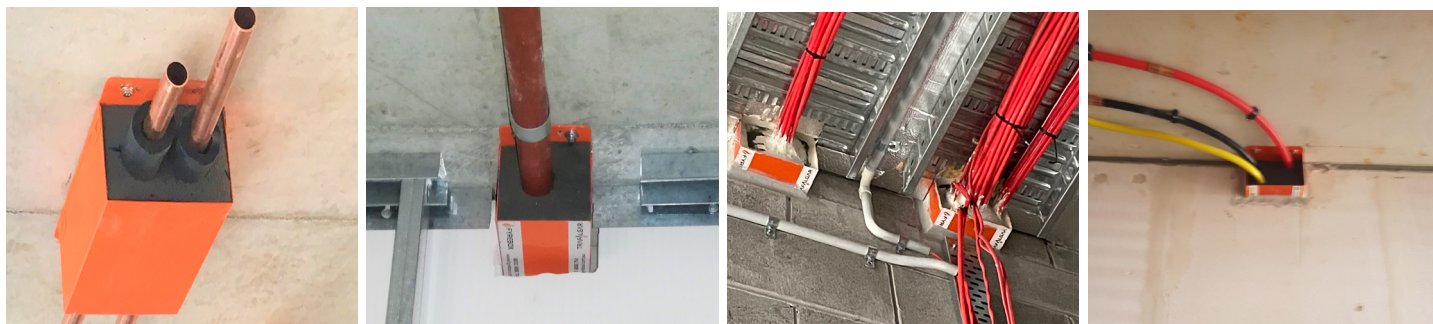
The SuperSTOPPER® Slab-Mount is a proudly Australian made passive fire penetration system used for multiple and mixed service penetrations which has been designed and tested to be built into residential/commercial apartment walls and riser shafts reducing the space required for service penetrations, providing predictable site costs and a reliable method of fire stopping.

Passive Fire Protection from Trafalgar Fire a Brand you can Trust, with 75 years of Innovation.



TAKE BACK CONTROL OF YOUR PROJECT TIMEFRAMES

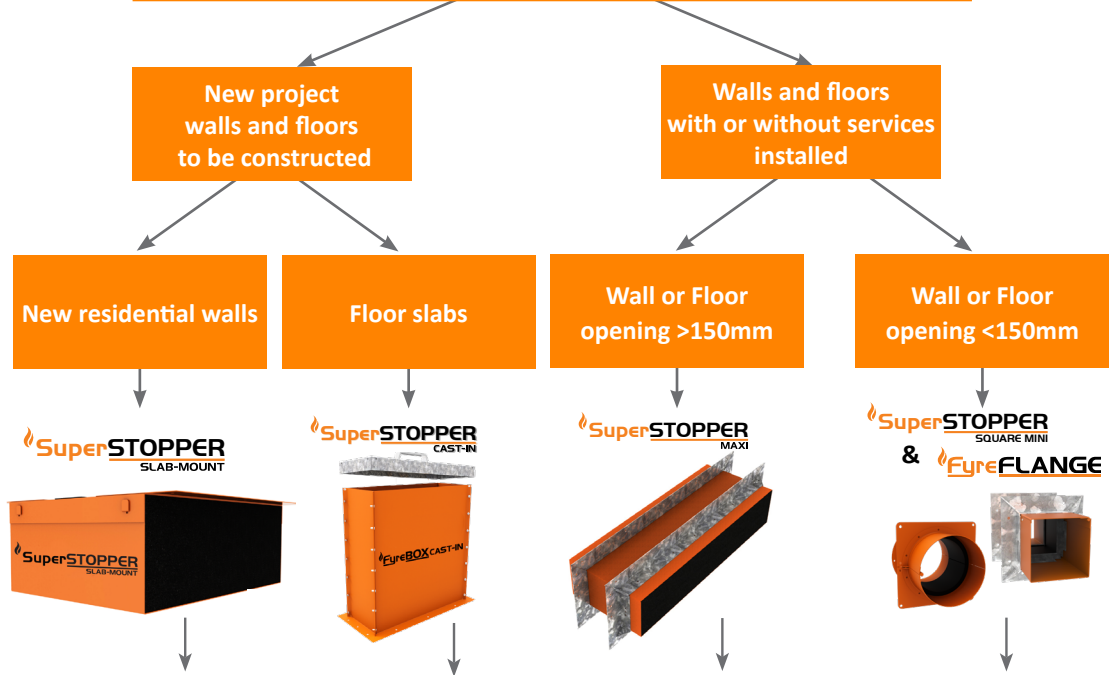
Re-think the sequencing of rough in, charging, leak testing and commissioning by pre-installing the penetration systems independently of other site trades.



Benefits	Traditional sealant & wrap systems	SuperSTOPPER® BAMBINO
Penetration installed before the fire walls?	No	Yes
Services installed hard against slab soffit?	No	Yes
Multiple services in one penetration?	No	Yes
Separation between different services?	No	Yes
Allows for future services to be added?	No	Yes
Doesnt need large fillets of sealant for wrap free systems?	No	Yes
Other service trades can share the same penetration?	No	Yes
100's of cables in one penetration?	No	Yes



SuperSTOPPER
SYSTEM SELECTOR



		SuperSTOPPER SLAB-MOUNT	SuperSTOPPER CAST-IN	SuperSTOPPER MAXI	SuperSTOPPER SQUARE MINI & FyreFLANGE
Installation Prior to Fire Barrier Construction		✓	✓	✗	✗
Hole Cutting Required		✗	✗	✓	✓
Fire Barrier	Floors				
	Concrete Slab	✗	✓	✓	✓
	FyreSET® Mortar	✗	✓	✗	✗
	Walls				
	Masonry Walls	✓	✗	✓	✓
	Concrete Walls	✓	✗	✓	✓
	Plasterboard	✓	✗	✓	✓
	Hebel® / Wasc®	✓	✗	✓	✓
	SpeedPanel®	✓	✗	✓	✓
	Alpha Panel®	✓	✗	✓	✓
	COREX walls	✓	✗	✓	✓
	FyreBOARD Maxilite™	✓	✗	✓	✓
	FyreBATT	✗	✗	✗	✓
Ceilings					
Plasterboard Ceiling	✗	✗	✓	✓	
COREX ceilings	✗	✗	✓	✓	
Services	Power Cables	✓	✓	✓	✓
	Data Cables	✓	✓	✓	✓
	Cable Trays	✓	✓	✓	✗
	Steel and Copper Pipes	✓	✓	✓	✓
	Aluminium Cables	✓	✓	✓	✓
	CPVC Pipes	✓	✓	✓	✓
	PVC Pipes	✗	✓	Floors Only	Floors Only
	PEX	✓	✓	✓	✓
	PEX-AL-PEX	✓	✓	✓	✓
	Insulated Copper	✓	✓	✓	✓
	Pair Coils	✓	✓	✓	✓

For full FRL details please consult the relevant technical guide or contact Trafalgar Fire. Fire testing of Trafalgar Fire products is always ongoing.

FIRE RESISTANCE LEVEL

FIRE RATING – HOW IS FIRE PERFORMANCE MEASURED?

An FRL (fire resistance level) is a handy way of summarising the performance of a building element. It consists of 3 numbers, all given in minutes:

FRL 120/120/120

(example)



Structural Adequacy

The ability of the building element to support the weight of adjacent building elements.

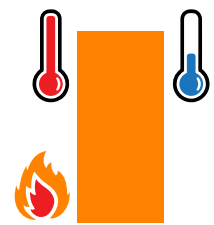
ie: a brick wall supporting a concrete floor slab above.



Integrity

The ability of an element to prevent the passage of flames and hot gasses.

ie: a plasterboard wall remaining intact and not allowing holes to form.



Insulation

The ability of an element to resist heat transfer from the exposed face to the unexposed face.

ie: a bundle of cables remaining below a set temperature limit on the unexposed side of the wall penetration system.

Note: Penetrations are not required to have a Structural Adequacy rating and is usually expressed as a dash. For example, a penetration through a 2 hour load bearing wall would be written as -/120/120.

INTEGRITY

The SuperSTOPPER® Slab-Mount system will achieve the integrity performance for up to 2 hours physically stopping the direct spread of fire, however the insulation performance of the penetration will be limited to the type of wall being used and conductivity of the services in the penetration.

INSULATION (TEMPERATURE RISE)

Heat transfer via conduction (or heat rise) will occur through the conductive parts of any penetration system. To limit the heat rise through the SuperSTOPPER® Slab-Mount penetration systems, our 25mm thick TWRAP™ foil encased blanket can be wrapped around the services and metal casing of the SuperSTOPPER® to achieve up to 2 hours of insulation performance. **There are some applications that won't require any TWRAP™ to achieve the full FRL, please refer to the tables below for specific details.**

60 Minute Plasterboard Stud Walls

WRAP FREE

Minimum of 13mm fire grade plasterboard on each face of steel or timber stud, of minimum 64mm thickness with a stated FRL of -/60/60



Service Type	Service Specification		FRL - WRAP FREE	
			64mm stud*	92mm studs
Plastic Pipes	PVC Pipes	Up to 32mm OD	-/60/30	-/60/60
	PEX Pipes	Up to 20mm	-/60/30	-/60/60
		Up to 32mm	-/60/30	-/60/60
		Up to 32mm with 19mm E-Flex insulation	-/60/30	-/60/60
	PEX-Al-PEX pipes	Up to 25mm	-/60/30	-/60/60
		Up to 32mm	-/60/-	-/60/-*
		Up to 32mm with 19mm E-Flex insulation	-/60/30	-/60/60
cPVC Pipes	Up to 40mm	-/60/-	-/60/-*	
	40mm to 60mm	-/60/30	-/60/60	
Bare Metal Pipes	Copper	Up to 50mm	-/60/-	-/60/-*
	Steel	up to 60mm	-/60/30	-/60/60
Metal Pipes Insulated**	Copper	Up to 50mm OD with PE insulation up to 20mm thick	-/60/30	-/60/30*
		Up to 50mm OD with FR insulation	-/60/30	-/60/60
		Up to 20mm OD with 38mm rockwool-type insulation	-/60/30	-/60/60
	Pair coil	Up to 9.5 & 19mm with 20mm FR insulation (or 13mm PE)	-/60/30	-/60/60
Power Cables - Copper Core	TPS	Up to 12x 2.5mm ² per bundle	-/60/30	-/60/60
	Rigid or Flexible PVC Conduits	Up to 32mm OD (with any size power or comms cables up to 32mm diameter)	-/60/30	-/60/60
	AS1530.4 Appendix D1 cable set	Applies to copper core power cables and cable trays up to 1000mm wide	-/60/30	-/60/30*
Power Cables - Aluminium Core	Single Core cables	Bundles of up to 3 x 240mm ² , 4 x 120mm ² and 9 x 70mm ² per bundle (16x cables total)	-/60/30	-/60/30*
Communications Cables	RG6 coax	Up to 3x per bundle	-/60/30	-/60/60
	AS1530.4 Appendix D2 cable set	Applies to copper core comms cables, including cable trays up to 1000mm wide	-/60/30	-/60/60
Conduits	Rigid or Flexible PVC Conduits	Up to 32mm OD (with any size power or comms cables up to 32mm diameter)	-/60/30	-/60/60

*TWrap required on these specific services to achieve -/60/60 FRL. Refer to FC10266 for details in specific wall types.

**With or without heat trace cable.

60 Minute AAC Panels

WRAP FREE

Hebel, Wasc or other AAC panels 75mm thick when used for -/60/60 applications. **Note: 30mm Maxilite board can be laminated on one side of the penetration to increase the insulation performance without the need for TWrap as shown below (WRAP FREE).**



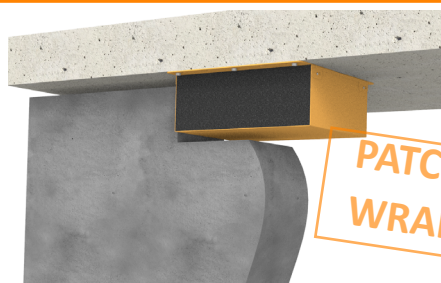
Service Type	Service Specification		FRL - WRAP FREE
			+ 30mm Maxilite
Plastic Pipes	PVC Pipe	Up to 32mm OD	-/60/60
	PEX Pipes	Up to 20mm	-/60/60
		Up to 32mm	-/60/60
		Up to 32mm with 19mm E-Flex insulation	-/60/60
	PEX-Al-PEX pipes	Up to 20mm	-/60/60
		Up to 25mm	-/60/60
		Up to 32mm	-/60/-*
		Up to 32mm with 19mm E-Flex insulation	-/60/60
	cPVC Pipes	Up to 40mm	-/60/-*
		40mm to 60mm	-/60/60
Bare Metal Pipes	Copper	Up to 50mm	-/60/-*
	Steel	up to 60mm	-/60/60
Metal Pipes Insulated**	Copper	Up to 50mm OD with PE insulation up to 20mm thick	-/60/60
		Up to 50mm OD with FR insulation	-/60/60
		Up to 20mm OD with 38mm rockwool-type insulation	-/60/60
	Pair coil	Up to 9.5 & 19mm with 13mm PE insulation	-/60/60
		Up to 9.5 & 19mm with 20mm FR insulation	-/60/60
Power Cables - Copper Core	TPS	Up to 12x 2.5mm ² per bundle	-/60/60
	Rigid or Flexible PVC Conduits	Up to 32mm OD (with any size power or comms cables up to 32mm diameter)	-/60/60
	AS1530.4 Appendix D1 cable set	Applies to copper core power cables and cable trays up to 1000mm wide	-/60/30*
Power Cables Aluminium Core	Single Core cables	Bundles of up to 3 x 240mm ² , 4 x 120mm ² and 9 x 70mm ² per bundle (16x cables total)	-/60/30*
Communications Cables	RG6 coax	Up to 3x per bundle	-/60/60
	AS1530.4 Appendix D2 cable set	Applies to copper core comms cables, including cable trays up to 1000mm wide	-/60/60
Conduits	Rigid or Flexible PVC Conduits	Up to 32mm OD (with any size power or comms cables up to 32mm diameter)	-/60/60

*TWrap required on these specific services to achieve -/60/60 FRL. Refer to FC10266 for details in specific wall types.

**With or without heat trace cable.

60 Minute Concrete, Masonry and Permanent Formwork Walls: Wrap Free

Walls designed as per AS3600 or AS3700 (or otherwise fire tested to achieved the required FRL with a minimum thickness as per the 90mm) including Dintel, AFS, Logically etc.



**PATCH FREE!
WRAP FREE!**

Service Type	Service Specification		FRL (Wrap Free)
Plastic Pipes	PVC Pipes	Up to 32mm OD	-/60/60
	PEX Pipes	Up to 20mm	-/60/60
		Up to 32mm	-/60/60
	PEX-Al-PEX pipes	Up to 20mm	-/60/60
		Up to 25mm	-/60/60
		Up to 32mm	-/60/*
	cPVC Pipes	Up to 40mm	-/60/*
40mm to 60mm		-/60/60	
Bare Metal Pipes	Copper	Up to 50mm	-/60/*
	Steel	up to 60mm	-/60/60***
Metal Pipes Insulated**	Copper	Up to 50mm OD with PE insulation up to 20mm thick	-/60/60
		Up to 50mm OD with FR insulation	-/60/60
		Up to 20mm OD with 38mm rockwool-type insulation	-/60/60
	Pair coil	Up to 9.5 & 19mm with 13mm FR insulation	-/60/60
		Up to 9.5 & 19mm with 20mm FR insulation	-/60/60
Power Cables - Copper Core	TPS	Up to 12x 2.5mm ² per bundle	-/60/60
	Rigid or Flexible PVC Conduits	Up to 32mm OD (with any size power or comms cables up to 32mm diameter)	-/60/60
	AS1530.4 Appendix D1 cable set	Applies to copper core power cables and cable trays up to 1000mm wide	-/60/60
Power Cables Aluminium Core	Single Core cables	Bundles of up to 3 x 240mm ² , 4 x 120mm ² and 9 x 70mm ² per bundle (16x cables total)	-/60/60
Communications Cables	RG6 coax	Up to 3x per bundle	-/60/60
	AS1530.4 Appendix D2 cable set	Applies to copper core comms cables, including cable trays up to 1000mm wide	-/60/60

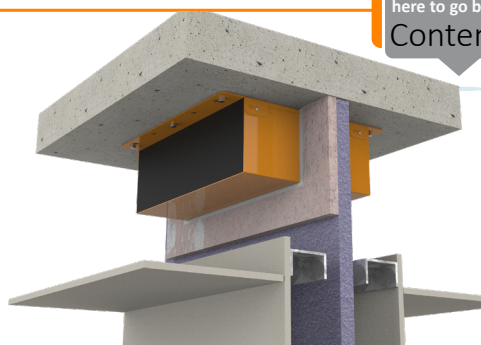
*TWrap required on these specific services to achieve -/60/60 FRL. Refer to FC10266 for details in specific wall types.

**With or without heat trace cable.

*** Wrap free approval for this service applies to walls minimum 118mm thick, otherwise 300mm TWrap is required on the pipe.

60 Minute IntrWall & Other Party Wall Systems

SuperSTOPPER® can penetrate the core of the wall, which is laminated with at least 1x16mm fire grade plasterboard on one side (or 1x layer of 13mm on both sides of the shaftliner core).



Service Type	Service Specification		FRL Wrap Free*	FRL with TWRAP™	TWrap Length required (mm)
Plastic Pipes	PVC Pipes	Up to 32mm OD	-/60/30	-/60/60	300
	PEX Pipes	Up to 20mm	-/60/30		300
		Up to 32mm	-/60/30		450
		Up to 32mm with 19mm E-Flex insulation	-/60/30		300
	PEX-Al-PEX pipes	Up to 25mm	-/60/30		300
		Up to 32mm	-/60/-		450
		Up to 32mm with 19mm E-Flex insulation	-/60/30		300
	cPVC Pipes	Up to 40mm	-/60/-		300
40mm to 60mm		-/60/30	300		
Bare Metal Pipes	Copper	Up to 50mm	-/60/-		300
	Steel	up to 60mm	-/60/30		300
Metal Pipes Insulated**	Copper	Up to 50mm OD with PE insulation up to 20mm thick	-/60/30		300
		Up to 50mm OD with FR insulation	-/60/30		300
		Up to 20mm OD with 38mm rockwool-type insulation	-/60/30		300
	Pair coil	Up to 9.5 & 19mm with 20mm FR insulation (or 13mm PE)	-/60/30	300	
Power Cables - Copper Core	TPS	Up to 12x 2.5mm ² per bundle	-/60/30	300	
	AS1530.4 Appendix D1 cable set	Applies to copper core power cables and cable trays up to 1000mm wide	-/60/30	300	
Power Cables - Aluminium Core	Single Core cables	Bundles of up to 3 x 240mm ² , 4 x 120mm ² and 9 x 70mm ² per bundle (16x cables total)	-/60/30	300	
Communications Cables	RG6 coax	Up to 3x per bundle	-/60/30	300	
	AS1530.4 Appendix D2 cable set	Applies to copper core comms cables, including cable trays up to 1000mm wide	-/60/30	300	
Conduits	Rigid or Flexible PVC Conduits	Up to 32mm OD (with or without cables)	-/60/30	300	

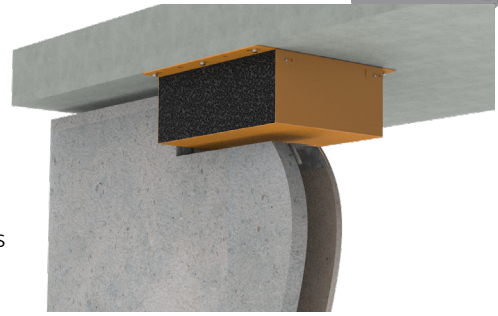
*If using SuperSTOPPER® without TWrap for FRL's up to -/60/30, the wall must be thickened with 60mm Maxilite board 100mm strips on one side.

**Heat trace cables may be installed underneath thermal lagging through a SuperSTOPPER® penetration

60 Minute XCEM Alpha Panel walls

Type 1 - 35mm Alpha Panel, framed with stud and lined on the other face with 13mm fire grade plasterboard (88mm minimum thickness)

Type 2 - 35mm Alpha Panel, framed with stud on both sides, lined on both faces with 13mm fire grade plasterboard (200mm minimum thickness)

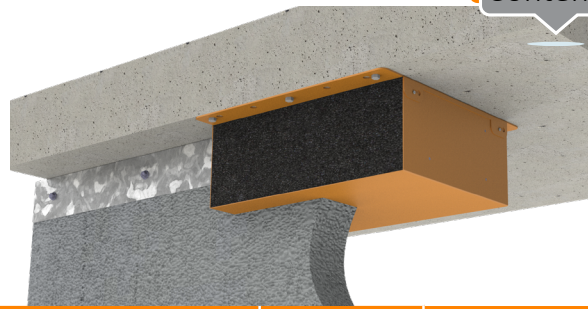


Service Type	Service Specification		FRL - WRAP FREE		FRL with TWRAP™	
			Type 1	Type 2	Both walls	Length required (mm)
Plastic Pipes	PVC Pipes	Up to 32mm OD	-/60/30	-/60/60	-/60/60	300
	PEX Pipes	Up to 20mm	-/60/30	-/60/60		300
		Up to 32mm	-/60/30	-/60/60		450
		Up to 32mm with 19mm E-Flex insulation	-/60/30	-/60/60		300
		Up to 25mm	-/60/30	-/60/60		300
	PEX-Al-PEX pipes	Up to 32mm	-/60/-	-/60/-		450
		Up to 32mm with 19mm E-Flex insulation	-/60/30	-/60/60		300
		cPVC Pipes	Up to 40mm	-/60/-		-/60/-
40mm to 60mm	-/60/30		-/60/60	300		
Bare Metal Pipes	Copper	Up to 50mm	-/60/-	-/60/-		300
	Steel	up to 60mm	-/60/30	-/60/60		300
Metal Pipes Insulated*	Copper	Up to 50mm OD with PE insulation up to 20mm thick	-/60/30	-/60/30		300
		Up to 50mm OD with FR insulation	-/60/30	-/60/60		300
		Up to 20mm OD with 38mm rockwool-type insulation	-/60/30	-/60/60		300
	Pair coil	Up to 9.5 & 19mm with 20mm FR insulation (or 13mm PE)	-/60/30	-/60/60	300	
Power Cables - Copper Core	TPS	Up to 12x 2.5mm ² per bundle	-/60/30	-/60/60	300	
	AS1530.4 Appendix D1 cable set	Applies to copper core power cables and cable trays up to 1000mm wide	-/60/30	-/60/30	300	
Power Cables Aluminium Core	Single Core cables	Bundles of up to 3 x 240mm ² , 4 x 120mm ² and 9 x 70mm ² per bundle (16x cables total)	-/60/30	-/60/30	300	
Communications Cables	RG6 coax	Up to 3x per bundle	-/60/30	-/60/60	300	
	AS1530.4 Appendix D2 cable set	Applies to copper core comms cables, including cable trays up to 1000mm wide	-/60/30	-/60/60	300	
Conduits	Rigid or Flexible PVC Conduits	Up to 32mm OD (with or without cables)	-/60/30	-/60/60	300	

*Heat trace cables may be installed underneath thermal lagging through a SuperSTOPPER® penetration

90 Minute AAC Panels

Hebel, Waslc or other AAC panels 75mm thick with a stated FRL up to -/90/90. Note if this wall is used for a -/60/60 apartment entry, please refer to page 9.



Service Type	Service Specification		FRL - WRAP FREE	FRL-With 300mm TWRAP
Plastic Pipes	PVC Pipes	Up to 32mm OD	-/90/30	-/90/90
	PEX Pipes	Up to 20mm	-/90/30	-/90/90
		Up to 32mm	-/90/30	-/90/90 (450mm TWrap)
		Up to 32mm with 19mm E-Flex insulation	-/90/30	-/90/90
	PEX-Al-PEX pipes	Up to 20mm	-/90/30	-/90/90
		Up to 25mm	-/90/30	-/90/90
		Up to 32mm	-/90/0	-/90/90 (450mm TWrap)
		Up to 32mm with 19mm E-Flex insulation	-/90/30	-/90/90 (450mm TWrap)
	cPVC Pipes	Up to 40mm	-/90/0	-/90/90
		40mm to 60mm	-/90/30	-/90/90
Bare Metal Pipes	Copper	Up to 50mm	-/90/0	-/90/90
	Steel	up to 60mm	-/90/30	-/90/90
Metal Pipes Insulated*	Copper	Up to 50mm OD with PE insulation up to 20mm thick	-/90/30	-/90/90
		Up to 50mm OD with FR insulation	-/90/30	-/90/90
		Up to 20mm OD with 38mm rockwool-type insulation	-/90/30	-/90/90
	Pair coil	Up to 9.5 & 19mm with 13mm PE insulation	-/90/30	-/90/90
		Up to 9.5 & 19mm with 20mm FR insulation	-/90/30	-/90/90
Power Cables - Copper Core	TPS	Up to 12x 2.5mm ² per bundle	-/90/30	-/90/90
	AS1530.4 Appendix D1 cable set	Applies to copper core power cables and cable trays up to 1000mm wide	-/90/30	-/90/90
	Rigid or Flexible PVC Conduits	Up to 32mm OD (with any size power or comms cables up to 32mm diameter)	-/90/30	-/90/90
Power Cables Aluminium Core	Single Core cables	Bundles of up to 3 x 240mm ² , 4 x 120mm ² and 9 x 70mm ² per bundle (16x cables total)	-/90/30	-/90/90
Communications Cables	RG6 coax	Up to 3x per bundle	-/90/30	-/90/90
	AS1530.4 Appendix D2 cable set	Applies to copper core comms cables, including cable trays up to 1000mm wide	-/90/30	-/90/90
Conduits	Rigid or Flexible PVC Conduits	Up to 32mm OD (with any size power or comms cables up to 32mm diameter)	-/90/30	-/90/90

*With or without heat trace cable

90 Minute Plasterboard Stud Walls

Minimum of 16mm fire grade plasterboard on each face of a steel or timber stud of minimum 64mm thickness, with a stated FRL of -/90/90.

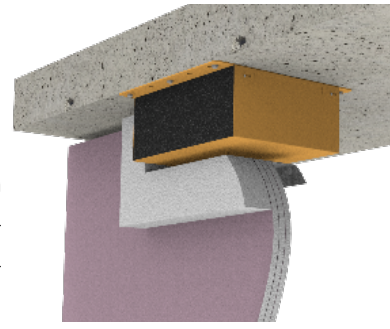


Service Type	Service Specification		FRL (Wrap Free)	FRL with TWRAP™	TWRAP™ Length required (mm)
Plastic Pipes	PVC Pipes	Up to 32mm OD	-/90/60	-/90/90	300
	PEX Pipes	Up to 20mm	-/90/60		300
		Up to 32mm	-/90/60		450
		Up to 32mm with 19mm E-Flex insulation	-/90/60		300
		Up to 25mm	-/90/60		300
	PEX-Al-PEX pipes	Up to 32mm	-/90/-		450
		Up to 32mm with 19mm E-Flex insulation	-/90/30		300
		cPVC Pipes	Up to 40mm		-/90/-
	40mm to 60mm		-/90/60		300
	Bare Metal Pipes	Copper	Up to 50mm		-/90/-
Steel		up to 60mm	-/90/30	300#	
Metal Pipes Insulated*	Copper	Up to 50mm OD with PE insulation up to 20mm thick	-/90/30	300	
		Up to 50mm OD with FR insulation	-/90/30	300	
		Up to 20mm OD with 38mm rockwool-type insulation	-/90/30	300	
	Pair coil	Up to 9.5 & 19mm with 20mm FR insulation (or 13mm PE)	-/90/30	300	
Power Cables - Copper Core	TPS	Up to 12x 2.5mm ² per bundle	-/90/30	300	
	AS1530.4 Appendix D1 cable set	Applies to copper core power cables and cable trays up to 1000mm wide	-/90/30	300	
Power Cables Aluminium Core	Single Core cables	Bundles of up to 3 x 240mm ² , 4 x 120mm ² and 9 x 70mm ² per bundle (16x cables total)	-/90/30	300	
Communications Cables	RG6 coax	Up to 3x per bundle	-/90/30	300	
	AS1530.4 Appendix D2 cable set	Applies to copper core comms cables, including cable trays up to 1000mm wide	-/90/30	300	
Conduits	Rigid or Flexible PVC Conduits	Up to 32mm OD (with or without cables)	-/90/60	300	

*Heat trace cables may be installed underneath thermal lagging through a SuperSTOPPER® penetration
#With 300mm of loose TWRap infill packed around any cable tray services within the wrap.

90 Minute Laminated Plasterboard Shaft Walls

Minimum of 3x fire grade plasterboard on one side of a steel stud with a stated FRL of 90 or 120 minutes. SuperSTOPPER® penetration thickened with 60mm Maxilite in 100mm strips on one side of the penetration.



Service Type	Service Specification		Plasterboard outside minimum 64mm stud (FRL wrap Free)		FRL with TWRAP	TWrap Length required (mm)
			3x13mm plaster	3x16mm plaster		
Plastic Pipes	PVC Conduits	Up to 32mm OD	-/90/30	-/120/30	-/120/120 (Limited to the FRL of the wall)	300
	PEX Pipes	Up to 20mm	-/90/30	-/120/30		300
		Up to 32mm	-/90/30	-/120/30		450
		Up to 32mm with 19mm E-Flex insulation	-/90/30	Not approved		300 (-/90/90 only)
	PEX-Al-PEX pipes	Up to 25mm	-/90/30	-/120/30		450
		Up to 32mm	-/90/-	-/120/30		450
		Up to 32mm with 19mm E-Flex insulation	-/90/30	Not approved		300 (-/90/90 only)
	cPVC Pipes	Up to 40mm	-/90/-	-/120/-		300
		40mm to 60mm	-/90/30	-/120/30		300
	Bare Metal Pipes	Copper	Up to 50mm	-/90/-		-/120/-
Steel		up to 60mm	-/90/30	-/120/30	300	
Metal Pipes Insulated**	Copper	Up to 50mm OD with PE insulation up to 20mm thick	-/90/30	-/120/30	300	
		Up to 50mm OD with FR insulation	-/90/30	-/120/30	300	
		Up to 20mm OD with 38mm rockwool-type insulation	-/90/30	-/120/30	300	
	Pair coil	Up to 9.5 & 19mm with 20mm FR insulation (or 13mm PE)	-/90/30	-/120/30	300	
Power Cables - Copper Core	TPS	Up to 12x 2.5mm ² per bundle	-/90/30	-/120/30	300	
	AS1530.4 Appendix D1 cable set	Applies to copper core power cables and cable trays up to 1000mm wide	-/90/30	-/120/30	600**	
Power Cables Aluminium Core	Single Core cables	Bundles of up to 3 x 240mm ² , 4 x 120mm ² and 9 x 70mm ² per bundle (16x cables total)	-/90/30	-/120/30	300	
Communications Cables	RG6 coax	Up to 3x per bundle	-/90/30	-/120/30	300	
	AS1530.4 Appendix D2 cable set	Applies to copper core comms cables, including cable trays up to 1000mm wide	-/90/30	-/120/30	450	
Conduits	Rigid or Flexible PVC Conduits	Up to 32mm OD (with or without cables)	-/90/30	-/120/30	300	

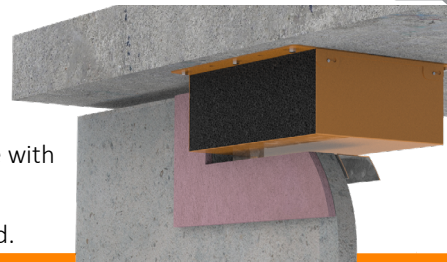
*Heat trace cables may be installed underneath thermal lagging through a SuperSTOPPER® penetration

**Loose TWrap infill installed onto cable trays for at least 300mm underneath TWrap

90 Minute XCEM Alpha Panel walls

Type 3 - 35mm Alpha Panel, framed with stud and lined on the other face with 16mm fire grade plasterboard (91mm minimum thickness).

Type 4 - 35mm Alpha Panel laminated with 16mm fire grade plasterboard.



Service Type	Service Specification		FRL (Wrap Free)**		FRL with TWRAP™	
			Type 3	Type 4	Both walls	Length required (mm)
Plastic Pipes	PVC Conduits	Up to 32mm OD	-/90/60	-/90/30	-/90/90	450
	PEX Pipes	Up to 20mm	-/90/60	-/90/30		450
		Up to 32mm	-/90/60	-/90/30		450
		Up to 32mm with 19mm E-Flex insulation	-/90/60	-/90/30		450
		Up to 25mm	-/90/60	-/90/30		450
	PEX-Al-PEX pipes	Up to 32mm	-/90/-	-/90/-		450
		Up to 32mm with 19mm E-Flex insulation	-/90/30	-/90/30		450
		cPVC Pipes	Up to 40mm	-/90/-		-/90/-
40mm to 60mm	-/90/60		-/90/30	450		
Bare Metal Pipes	Copper	Up to 50mm	-/90/-	-/90/30		450
	Steel	up to 60mm	-/90/30	-/90/30		450
Metal Pipes Insulated*	Copper	Up to 50mm OD with PE insulation up to 20mm thick	-/90/30	-/90/30		450
		Up to 50mm OD with FR insulation	-/90/30	-/90/30		450
		Up to 20mm OD with 38mm rockwool-type insulation	-/90/30	-/90/30		450
	Pair coil	Up to 9.5 & 19mm with 20mm FR insulation (or 13mm PE)	-/90/30	-/90/30		450
Power Cables - Copper Core	TPS	Up to 12x 2.5mm ² per bundle	-/90/30	-/90/30		450
	AS1530.4 Appendix D1 cable set	Applies to copper core power cables and cable trays up to 1000mm wide	-/90/30	-/90/30	450	
Power Cables Aluminium Core	Single Core cables	Bundles of up to 3 x 240mm ² , 4 x 120mm ² and 9 x 70mm ² per bundle (16x cables total)	-/90/30	-/90/30	450	
Communications Cables	RG6 coax	Up to 3x per bundle	-/90/30	-/90/30	450	
	AS1530.4 Appendix D2 cable set	Applies to copper core comms cables, including cable trays up to 1000mm wide	-/90/30	-/90/30	450	
Conduits	Rigid or Flexible PVC Conduits	Up to 32mm OD (with or without cables)	-/90/60	-/90/30	450	

*Heat trace cables may be installed underneath thermal lagging through a SuperSTOPPER® penetration

**Wrap free FRL's require a patch of 60mm Maxilite board 100mm strips on one side of the wall.

120 Minute Plasterboard Stud Walls

Minimum of 2x13mm fire grade plasterboard on each face of steel or timber stud, of minimum 64mm thickness with a stated FRL of -/120/120.



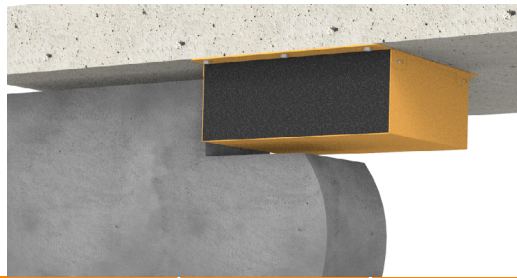
Service Type	Service Specification		FRL (Wrap Free)	FRL with TWRAP™ (all studs)	TWRAP™ Length required (mm)
Plastic Pipes	PVC Pipes	Up to 32mm OD	-/120/60	-/120/120	300
	PEX Pipes	Up to 20mm	-/120/60		300
		Up to 32mm	-/120/60		450
	PEX-Al-PEX pipes	Up to 20mm	-/120/60		300
		Up to 32mm	-/120/-		450
	cPVC Pipes	Up to 40mm	-/120/-		300
40mm to 60mm		-/120/60	300		
Bare Metal Pipes	Copper	Up to 50mm	-/120/-		300
	Steel	up to 60mm	-/120/60		300
Metal Pipes Insulated*	Copper	Up to 50mm OD with PE insulation up to 20mm thick	-/120/60		300
		Up to 50mm OD with FR insulation	-/120/60		300
		Up to 20mm OD with 38mm rockwool-type insulation	-/120/60		300
	Pair coil	Up to 9.5 & 19mm with 20mm FR insulation (or 13mm PE)	-/120/60	300	
Power Cables - Copper Core	TPS	Up to 12x 2.5mm ² per bundle	-/120/60	300	
	AS1530.4 Appendix D1 cable set	Applies to copper core power cables and cable trays up to 1000mm wide	-/120/60	600**	
Power Cables Aluminium Core	Single Core cables	Bundles of up to 3 x 240mm ² , 4 x 120mm ² and 9 x 70mm ² per bundle (16x cables total)	-/120/30	300	
Communications Cables	RG6 coax	Up to 3x per bundle	-/120/60	300	
	AS1530.4 Appendix D2 cable set	Applies to copper core comms cables, including cable trays up to 1000mm wide	-/120/60	450**	
Conduits	Rigid or Flexible PVC Conduits	Up to 32mm OD (with or without cables)	-/120/60	300	

*Heat trace cables may be installed underneath thermal lagging through a SuperSTOPPER® penetration

**Loose TWrap infill installed onto cable trays for at least 300mm underneath TWrap

120 Minute Concrete, Masonry and Permanent Formwork Walls

Walls designed as per AS3600 or AS3700 (or otherwise fire tested to achieved the required FRL with a minimum thickness as per the 90mm) including Dintel, AFS, Logical etc.



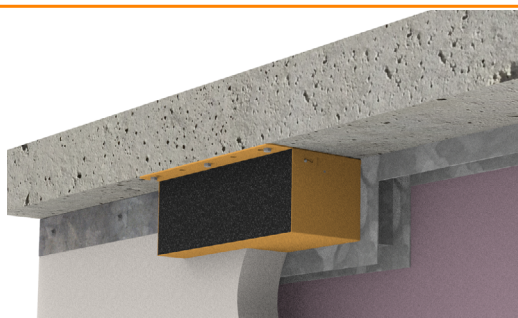
Service Type	Service Specification		FRL (Wrap Free)	FRL with TWRAP™ (all studs)	TWRAP™ Length required (mm)
Plastic Pipes	PVC Pipes	Up to 32mm OD	-/120/60	-/120/120	300
	PEX Pipes	Up to 20mm	-/120/60		300
		Up to 32mm	-/120/60		450
	PEX-Al-PEX pipes	Up to 20mm	-/120/60		300
		Up to 25mm	-/120/60		450
		Up to 32mm	-/120/0		450
	cPVC Pipes	Up to 40mm	-/120/0		300
40mm to 60mm		-/120/60	300		
Bare Metal Pipes	Copper	Up to 50mm	-/120/0		300
	Steel	up to 60mm	-/120/60		300
Metal Pipes Insulated*	Copper	Up to 50mm OD with PE insulation up to 20mm thick	-/120/60		300
		Up to 50mm OD with FR insulation	-/120/60		300
		Up to 20mm OD with 38mm rockwool-type insulation	-/120/60		300
	Pair coil	Up to 9.5 & 19mm with 13mm FR insulation	-/120/60		300
		Up to 9.5 & 19mm with 20mm FR insulation	-/120/60	300	
Power Cables - Copper Core	TPS	Up to 12x 2.5mm ² per bundle	-/120/60	300	
	AS1530.4 Appendix D1 cable set	Applies to copper core power cables and cable trays up to 1000mm wide	-/120/60	600#	
Power Cables Aluminium Core	Single Core cables	Bundles of up to 3 x 240mm ² , 4 x 120mm ² and 9 x 70mm ² per bundle (16x cables total)	-/120/30	300	
Communications Cables	RG6 coax	Up to 3x per bundle	-/120/60	300	
	AS1530.4 Appendix D2 cable set	Applies to copper core comms cables, including cable trays up to 1000mm wide	-/120/60	450#	
Conduits	Rigid or Flexible PVC Conduits	Up to 32mm OD (with or without cables)	-/120/60	300	

*With or without heat trace cable.

#With 300mm of loose TWRap infill packed around any cable tray services within the wrap.

120 Minute AAC Panels

Hebel, Wasc or other AAC panels 75mm thick with a stated FRL up to -/120/120.



Service Type	Service Specification		FRL (Wrap Free)	FRL with TWRAP™	TWRAP™ Length required (mm)
Plastic Pipes	PVC pipes	Up to 32mm OD	-/120/30	-/120/120	300
	PEX Pipes	Up to 20mm	-/120/30		300
		Up to 32mm	-/120/30		450
	PEX-Al-PEX pipes	Up to 20mm	-/120/30		300
		Up to 25mm	-/120/30		450
		Up to 32mm	-/120/0		450
	cPVC Pipes	Up to 40mm	-/120/0		300
		Up to 60mm	-/120/30		300
Bare Metal Pipes	Copper	Up to 50mm	-/120/0	300	
	Steel	up to 60mm	-/120/30	300	
Metal Pipes Insulated*	Copper	Up to 50mm OD with PE insulation up to 20mm thick	-/120/30	300	
		Up to 50mm OD with FR insulation	-/120/30	300	
	Pair coil	Up to 20mm OD with 38mm rockwool-type insulation	-/120/30	300	
		Up to 9.5 & 19mm with 13mm FR insulation	-/120/30	300	
		Up to 9.5 & 19mm with 20mm FR insulation	-/120/30	300	
Power Cables - Copper Core	TPS	Up to 12x 2.5mm ² per bundle	-/120/30	300	
	AS1530.4 Appendix D1 cable set	Applies to copper core power cables and cable trays up to 1000mm wide	-/120/30	600#	
Power Cables Aluminium Core	Single Core cables	Bundles of up to 3 x 240mm ² , 4 x 120mm ² and 9 x 70mm ² per bundle (16x cables total)	-/120/30	300	
Communications Cables	RG6 coax	Up to 3x per bundle	-/120/30	300	
	AS1530.4 Appendix D2 cable set	Applies to copper core comms cables, including cable trays up to 1000mm wide	-/120/30	450#	
Conduits	Rigid or Flexible PVC Conduits	Up to 32mm OD (with or without cables)	-/120/60	300	

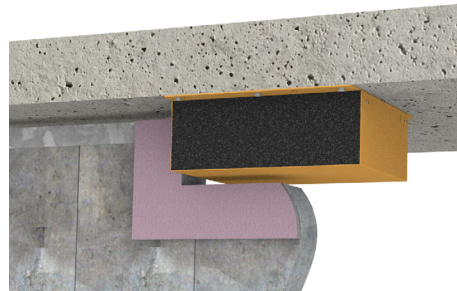
*With or without heat trace cable

#With 300mm of loose TWRap infill packed around the services within the wrap.

Speedpanel® Walls

Speedpanel walls of thickness ranging from 51mm (-/60/60), 64mm (-/90/90) and 78mm (-/120/120).

Note 51mm and 64mm Speedpanel walls required additional patch of 30mm Maxilite board on one side of the wall.



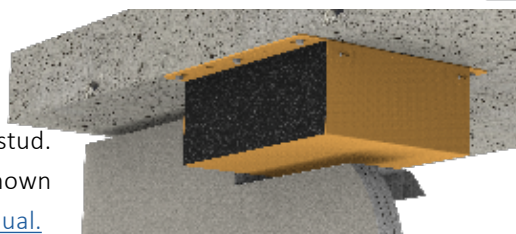
Service Type	Service Specification		51mm Speedpanel + 30mm Maxilite	64mm Speedpanel + 30mm Maxilite	78mm Speedpanel	TWrap Length required (mm)
Plastic Pipes	PVC pipes	Up to 32mm OD				300
	PEX Pipes	Up to 20mm				300
		Up to 32mm				450
		Up to 32mm with 19mm E-Flex** ****insulation				450
	PEX-AL-PEX pipes	Up to 20mm				300
		Up to 32mm				450
		Up to 32mm with 19mm E-Flex** insulation				450
cPVC Pipes	Up to 40mm	300				
	Up to 60mm	300				
Bare Metal Pipes	Copper	Up to 50mm				300
	Steel	up to 60mm				300
Metal Pipes Insulated#	Copper	Up to 50mm OD with PE insulation up to 20mm thick	-/60/60	-/90/90	-/120/120	300
		Up to 50mm OD with FR insulation				300
		Up to 20mm OD with 38mm rockwool-type insulation				300
	Pair coil	Up to 9.5 & 19mm with 13mm PE insulation				300
		Up to 9.5 & 19mm with 20mm FR insulation				300
Power Cables - Copper Core	TPS	Up to 12x 2.5mm ² per bundle				300
	AS1530.4 Appendix D1 cable set	Applies to copper core power cables and cable trays up to 1000mm wide				600*
Power Cables Aluminium Core	Single Core cables	Bundles of up to 3 x 240mm ² , 4 x 120mm ² and 9 x 70mm ² per bundle (16x cables total)				300
Communications Cables	RG6 coax	Up to 3x per bundle				300
	AS1530.4 Appendix D2 cable set	Applies to copper core comms cables, including cable trays up to 1000mm wide				450*
Conduits	Rigid or Flexible PVC Conduits	Up to 32mm OD (with or without cables)				300

*300mm loose TWrap infill underneath Twrap ** Maximum FRL-/90/90

#With or without heat trace cable. For specific service based FRL's without using TWrap, refer to report FC10266

Trafalgar COREX Shaft Walls

2x laminated Corex boards fixed to one side of a 64mm steel stud. FRL of the wall is related to thickness of the Corex facings as shown in the table. [Click here for the Corex Shaft Wall technical Manual.](#)



Service Type	Service Specification		Corex Board Specification & SuperSTOPPER® Penetration FRL*			TWrap Length required (mm)
			2x15mm	2x20mm	2x25mm	
Plastic Pipes	PVC Pipes	Up to 32mm OD	-/60/60	-/90/90	-/120/120	450
	PEX Pipes	Up to 20mm				450
		Up to 32mm				450
		Up to 32mm with 19mm E-Flex insulation				450
		Up to 20mm				450
	PEX-Al-PEX pipes	Up to 25mm				450
		Up to 32mm				450
		Up to 32mm with 19mm E-Flex insulation				450
cPVC Pipes	Up to 40mm	450				
	40mm to 60mm	450				
Bare Metal Pipes	Copper	Up to 50mm	-/60/60	-/90/90	-/120/120	450
	Steel	up to 60mm				450
Metal Pipes Insulated**	Copper	Up to 50mm OD with PE insulation up to 20mm thick	-/60/60	-/90/90	-/120/120	450
		Up to 50mm OD with FR insulation				450
	Pair coil	Up to 20mm OD with 38mm rockwool-type insulation				450
		Up to 9.5 & 19mm with 13mm PE insulation				450
Power Cables - Copper Core	TPS	Up to 12x 2.5mm ² per bundle	-/60/60	-/90/90	-/120/120	450
		AS1530.4 Appendix D1 cable set				Applies to copper core power cables and cable trays up to 1000mm wide
Power Cables Aluminium Core	Single Core cables	Bundles of up to 3 x 240mm ² , 4 x 120mm ² and 9 x 70mm ² per bundle (16x cables total)	-/60/60	-/90/90	-/120/120	450
Communications Cables	RG6 coax	Up to 3x per bundle	-/60/60	-/90/90	-/120/120	450
	AS1530.4 Appendix D2 cable set	Applies to copper core comms cables, including cable trays up to 1000mm wide				450
Conduits	Rigid or Flexible PVC Conduits	Up to 32mm OD (with or without cables)	-/60/60	-/90/90	-/120/120	450

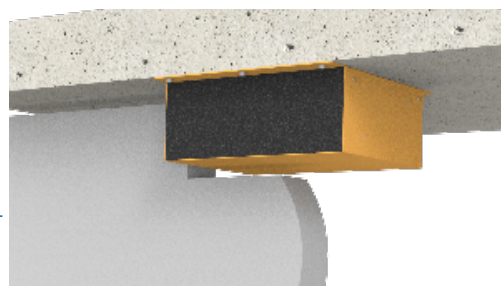
For Corex walls, the wall must be thickened on one side with 100mm wide Maxilite, 60mm thick around the penetration.

*For specific service based FRL's without using TWrap, refer to report FC10266.

**Heat trace cables may be installed underneath thermal lagging through a SuperSTOPPER® penetration

Maxilite Board Bulkheads and Oversized Penetrations

Maxilite FyreBOARD is commonly used to construct fire rated bulkheads or to seal oversized apertures cut into fire walls. Minimum thickness required 60mm. [Click here for the Maxilite technical manuals.](#)



Service Type	Service Specification		FRL (Wrap Free)	FRL with TWRAP™ (all studs)	TWRAP™ Length required (mm)
Plastic Pipes	PVC Pipes	Up to 32mm OD	-/120/30	-/120/120	300
	PEX Pipes	Up to 20mm	-/120/30		300
		Up to 32mm	-/120/30		450
	PEX-Al-PEX pipes	Up to 20mm	-/120/30		300
		Up to 25mm	-/120/30		450
		Up to 32mm	-/120/0		450
	cPVC Pipes	Up to 40mm	-/120/0		300
40mm to 60mm		-/120/30	300		
Bare Metal Pipes	Copper	Up to 50mm	-/120/0		300
	Steel	up to 60mm	-/120/30		300
Metal Pipes Insulated*	Copper	Up to 50mm OD with PE insulation up to 20mm thick	-/120/30		300
		Up to 50mm OD with FR insulation	-/120/30		300
		Up to 20mm OD with 38mm rockwool-type insulation	-/120/30		300
	Pair coil	Up to 9.5 & 19mm with 13mm FR insulation	-/120/30		300
		Up to 9.5 & 19mm with 20mm FR insulation	-/120/30	300	
Power Cables - Copper Core	TPS	Up to 12x 2.5mm ² per bundle	-/120/30	300	
	AS1530.4 Appendix D1 cable set	Applies to copper core power cables and cable trays up to 1000mm wide	-/120/30	600#	
Power Cables Aluminium Core	Single Core cables	Bundles of up to 3 x 240mm ² , 4 x 120mm ² and 9 x 70mm ² per bundle (16x cables total)	-/120/30	300	
Communications Cables	RG6 coax	Up to 3x per bundle	-/120/30	300	
	AS1530.4 Appendix D2 cable set	Applies to copper core comms cables, including cable trays up to 1000mm wide	-/120/30	450#	
Conduits	Rigid or Flexible PVC Conduits	Up to 32mm OD (with or without cables)	-/120/30	300	

*With or without heat trace cable

#With 300mm of loose TWrap infill packed around the services within the wrap.

INSTALLATION STAGE 1: Slab-Mount the SuperSTOPPER®

ALL WALLS

MARK



Mark the location where the wall is to be constructed and position the SuperSTOPPER® Slab-Mount in the desired penetration position.

Ensure that the SuperSTOPPER® will be located centrally to the thickness of the wall.

SEPARATE



Separate the bottom section of the SuperSTOPPER®, and the foam end plugs, which are to be put in a safe location for later use.

FIX



Fix the top section of the SuperSTOPPER® to the floor slab using **M6 masonry anchors**, **4mmx20mm gas or powder actuated anchors** or any other **all-steel anchor** of equal pull out rating through the pre-formed mounting holes at two per side, or 300mm centres.

SERVICES



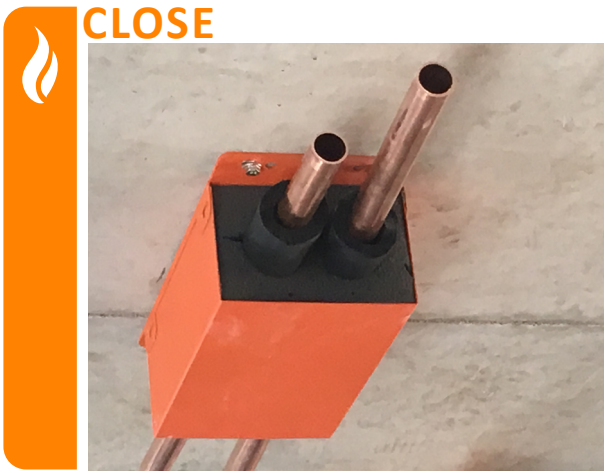
Install services through the SuperSTOPPER® as required, ensuring all are approved for use. Please refer to the FRL tables for a list of all approved services (NB extra services can be installed at any stage of the SuperSTOPPER® installation).

Click to Watch Installation Video



INSTALLATION STAGE 2: WALL INSTALLATION

PLASTERBOARD AND COREX



Retrieve the bottom section of the SuperSTOPPER® and fit around the services, to the secured top section, confirming that all fixing tabs are properly locked into place.



Install the wall's stud framing around the perimeter of the SuperSTOPPER® and fix the plasterboard as per the wall manufacturers instruction, ensuring the annular gaps between the SuperSTOPPER® and **wall openings are within 5-20mm and allow for deflection as required.**

There is no need to line the opening around a SuperSTOPPER® with plasterboard for 60 minute applications.

Corex Walls require the opening to be lined with the same thickness of Corex board as is used to build the wall.



Plasterboard is applied around the SuperSTOPPER® Slab-Mount, forming annular gaps maximum 20mm. For Corex walls, the wall must be thickened on one side with 100mm wide Maxilite, 60mm thick around the

FINISHING

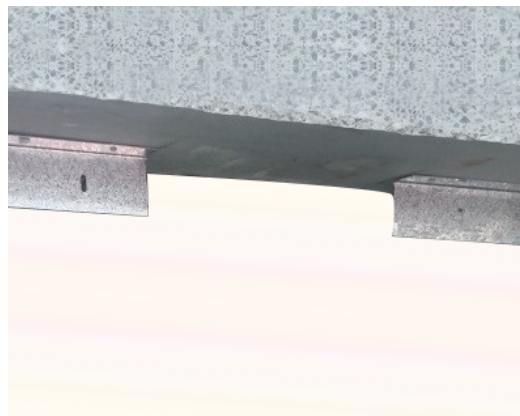
Complete the installation by following the Stages 3-4 steps outlined on [pages 28-29](#)



INSTALLATION STAGE 2: WALL INSTALLATION

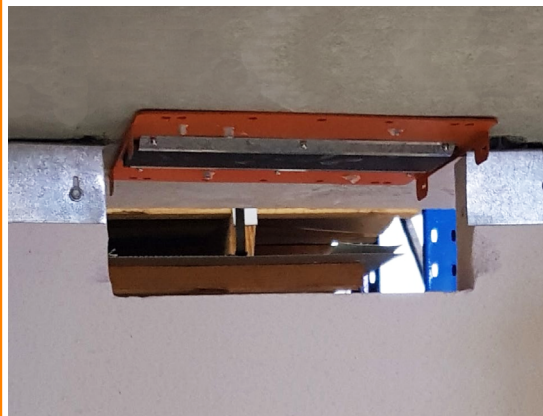
AAC PANEL WALL

ANGLES



Install the Hebel® wall's fixing angles on either side of the SuperSTOPPER®

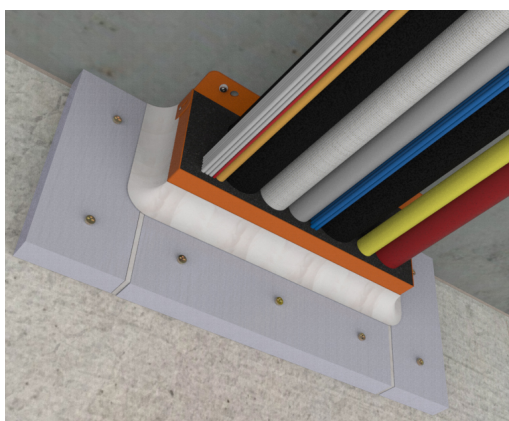
PANEL



Install the Hebel® wall panel as per the supplier's instructions, ensuring the annular gaps between the SuperSTOPPER® and wall opening are within 5-20mm.

Please note: FyreBOARD Maxilite® collar is not needed if you are planning to use the 3 – sided TWRAP™ detail which covers the casing of the SuperSTOPPER® for 90-minute insulation ratings – refer to table on [page 13](#).

COLLAR



Construct a FyreBOARD Maxilite® wall collar, on one side of the penetration, by fixing 30mm thick x 100mm wide FyreBOARD Maxilite® strips around the three exposed sides of the SuperSTOPPER®. Fix FyreBOARD Maxilite® with 10g x 60mm plasterboard screws at 150mm centres and make certain that FyreBOARD Maxilite® is fixed flush with the wall opening (Trafalgar Fire strongly recommends this step is undertaken by a Trafalgar approved SuperSTOPPER® Certification Partner).

FINISHING

Complete the installation by following the Stages 3-4 steps outlined on [pages 28-29](#)

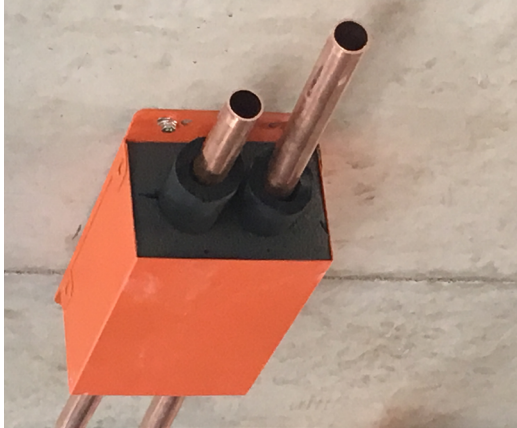
[Click to Watch Installation Video](#)



INSTALLATION STAGE 2: WALL INSTALLATION

ALPHA PANEL

CLOSE



Retrieve the bottom section of the SuperSTOPPER® and fit around the services, to the secured top section, confirming that all fixing tabs are properly locked into place.

FRAME



Install the wall's stud framing around the perimeter of the SuperSTOPPER® and fix the plasterboard as per the wall manufacturers instruction, ensuring the annular gaps between the SuperSTOPPER® and wall openings are within 5-20mm and allow for deflection as required.

Framing only required for AlphaPanel walls that are sheeted with plasterboard on one or both sides, however even walls with just AlphaPanel require plasterboard lining, refer to the drawings at the end of the manual for specifics.

PLASTER



The opening is lined with FR plasterboard to assist with the performance of the SuperSTOPPER® Slab Mount system. Some Alpha Panel Walls need to be thickened with Maxilite. Depending on applications and FRL required, refer to the approvals on [page 12](#) (60 mins) and [page 16](#) (90mins).

FINISHING

Complete the installation by following the Stages 3-4 steps outlined on [pages 28-29](#)

Click to Watch Installation Video



INSTALLATION STAGE 2: WALL INSTALLATION

SPEEDPANEL®

ANGLES



Install the Speedpanel® C-Channel to the full perimeter of the SuperSTOPPER® ensuring the annular gaps between the SuperSTOPPER® and wall opening are within 5-20mm.

Install FR plasterboard to one side of the wall as per Speedpanel® installation specifications.

PANEL



Install the Speedpanel® wall panel as per the supplier's instructions, ensuring the annular gaps between the SuperSTOPPER® and wall opening are within 5-20mm.

COLLAR



For Speedpanel® walls less than 78mm construct a FyreBOARD Maxilite® wall collar, on one side of the penetration, by fixing 30mm thick x 100mm wide FyreBOARD Maxilite® strips around the three exposed sides of the SuperSTOPPER®. Fix FyreBOARD Maxilite® with 10g x 60mm plasterboard screws at 150mm centres and make certain that FyreBOARD Maxilite® is fixed flush with the wall opening (Trafalgar Fire strongly recommends this step is undertaken by a Trafalgar Fire approved SuperSTOPPER® Certification Partner).

FINISHING



Complete the installation by following the Stages 3-4 steps outlined on [pages 28-29](#)

Click to Watch Installation Video



INSTALLATION STAGE 3: FOAM INSTALLATION

ALL WALLS

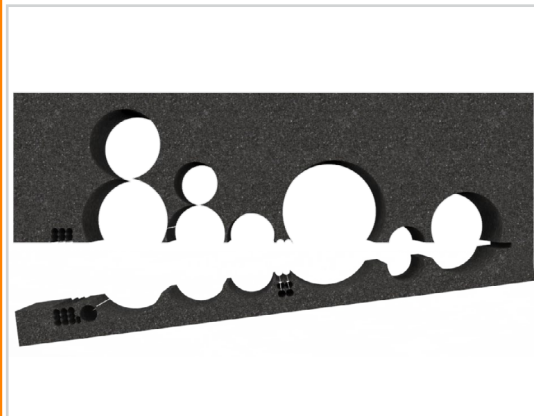
Confirm that the installation up to this point has been done in accordance with the requirements for each wall type to ensure compliance.

SEAL



Fill all annular gaps between the SuperSTOPPER® and wall opening with FyreFLEX® Sealant to a depth of 20mm and finish with a 30x30mm fillet on each side of the penetration (fillet not needed if penetration is wrapped with TWRAP).

SUPERSTOPPER® FOAM



Retrieve the foam end plugs and cut a horizontal slit allowing you to open the foam. Cut out a rough profile of the services so that the foam can be fit snugly around them. Slide the foam over/around the services and into the SuperSTOPPER®

Please note: 30x30mm FyreFLEX® fillet is not needed if you are planning to use the 3 – sided TWRAP™ detail as shown on [page 29](#).

FOAM EXAMPLE



Plug any visible gaps in the end plugs with left over foam off cuts or FyreFLEX® Sealant. Note: It is recommended that after the foam is installed, a photograph should be taken for site records to demonstrate a compliant foam installation.

FILL FOAM GAPS



[Click to Watch Installation Video](#)



INSTALLATION STAGE 4: WRAPPING

ALL WALLS

If TWRAP™ is required for the services to achieve the insulation rating as described in the tables on pages 8-22, install as follows.

WRAP- SERVICES ONLY



In some instances, it is appropriate to For a 60 minutes insulation, simply wrap TWRAP™ around the required (or all services), ensuring each end overlaps itself by 50mm, and butt it up against the SuperSTOPPER®'s foam end plugs. Secure the TWRAP™ in three locations with reinforced aluminium tape or stainless-steel cable ties around the entire circumference. Contact technical@tgroup.com.au to see if this is appropriate on your site.

WRAP UP TO 120MIN

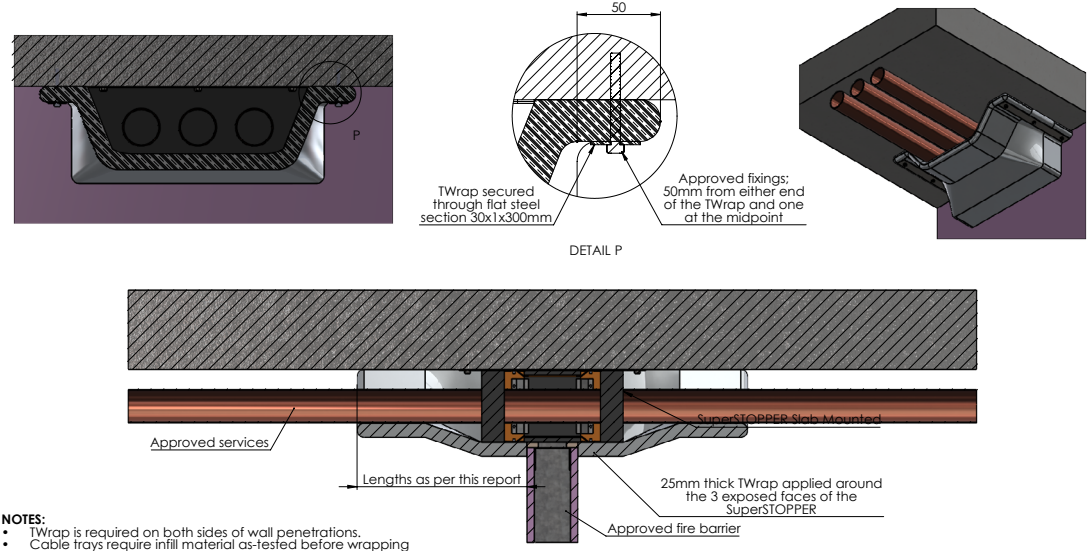


For 90 or greater minutes insulation, simply wrap TWRAP™ around the services and SuperSTOPPER® casing, flaring the edges out against the underside of the slab. These edges should overlap the slab by at least 50mm and be held in place by 30x1x300mm flat steel tabs. Refer to install drawing below.

Some instances don't need any TWrap at all, check the FRL tables or contact technical@tgroup.com.au to confirm.

TWrap - 3-Sided Wrap

Where the SuperSTOPPER configuration does not achieve full insulation in a given fire barrier, TWrap will need to be applied to the SuperSTOPPER casing and services in order to increase their insulation rating up to -/XXX/120.



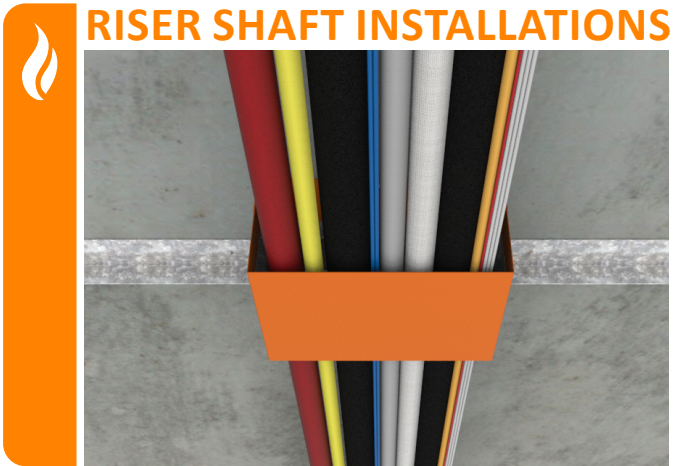
- NOTES:
- TWrap is required on both sides of wall penetrations.
 - Cable trays require infill material as-tested before wrapping

Click to Watch Installation Video

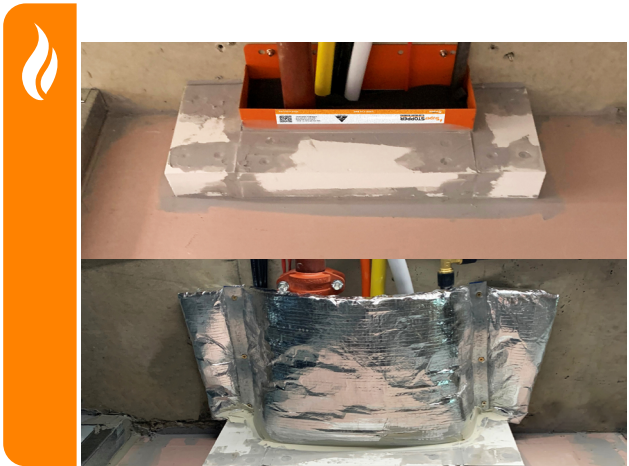


INSTALLATION ALTERNATIVES

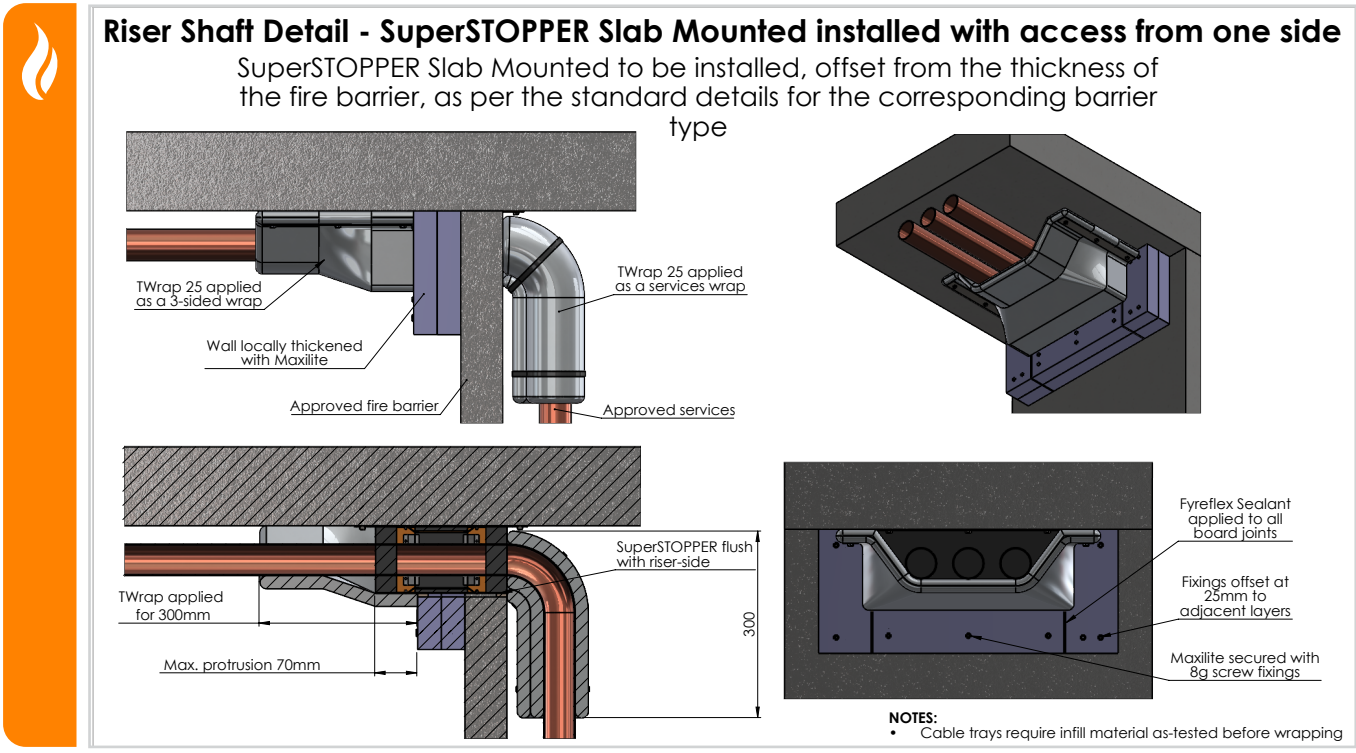
RISER SHAFT



Where the SuperSTOPPER® cannot be centered in the wall due to narrow risers or slab edges being nearby.



The SuperSTOPPER® can be installed offset to the wall using strips of FyreBOARD Maxilite® to locally thicken the penetration.



Click to Watch Installation Video



INSTALLATION ALTERNATIVES

STEPPED SLAB, WALL JUNCTIONS & OVERSIZED OPENINGS

Stepped Slabs

Where a step up in the slab is present, FyreBOARD Maxilite can be used to pack out the gap to the SuperSTOPPER® Slab-Mount. Suitable for steps up to 60mm, with min 100mm long fixings used to secure the SuperSTOPPER® Slab-Mount to the concrete through the Maxilite Board. [Refer to page 52 for Technical Drawing.](#)

Oversized Openings

For openings cut too large, up to 60mm FyreBOARD Maxilite can be used to pack out the opening and reduce the annular gap. This can also be done on the sides of the SuperSTOPPER® to reduce the width of the penetration. [Refer to page 53 for Technical Drawing.](#)

Wall Junctions

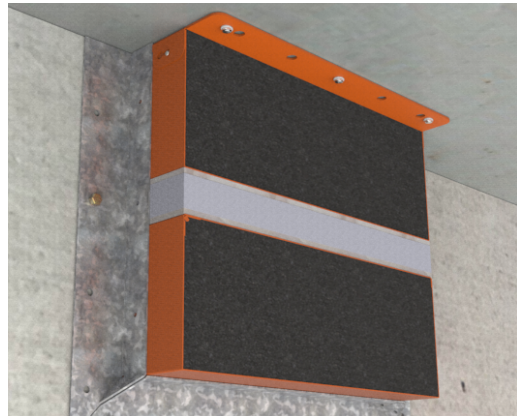
For SuperSTOPPER® Slab-Mount systems installed against adjacent barriers, FyreFLEX Sealant is applied to the perimeter (20mm depth) of the box so daylight cant be seen through, and TWrap can be installed 2-sided to the soffit and the wall. [Refer to page 54 for Technical Drawing.](#)



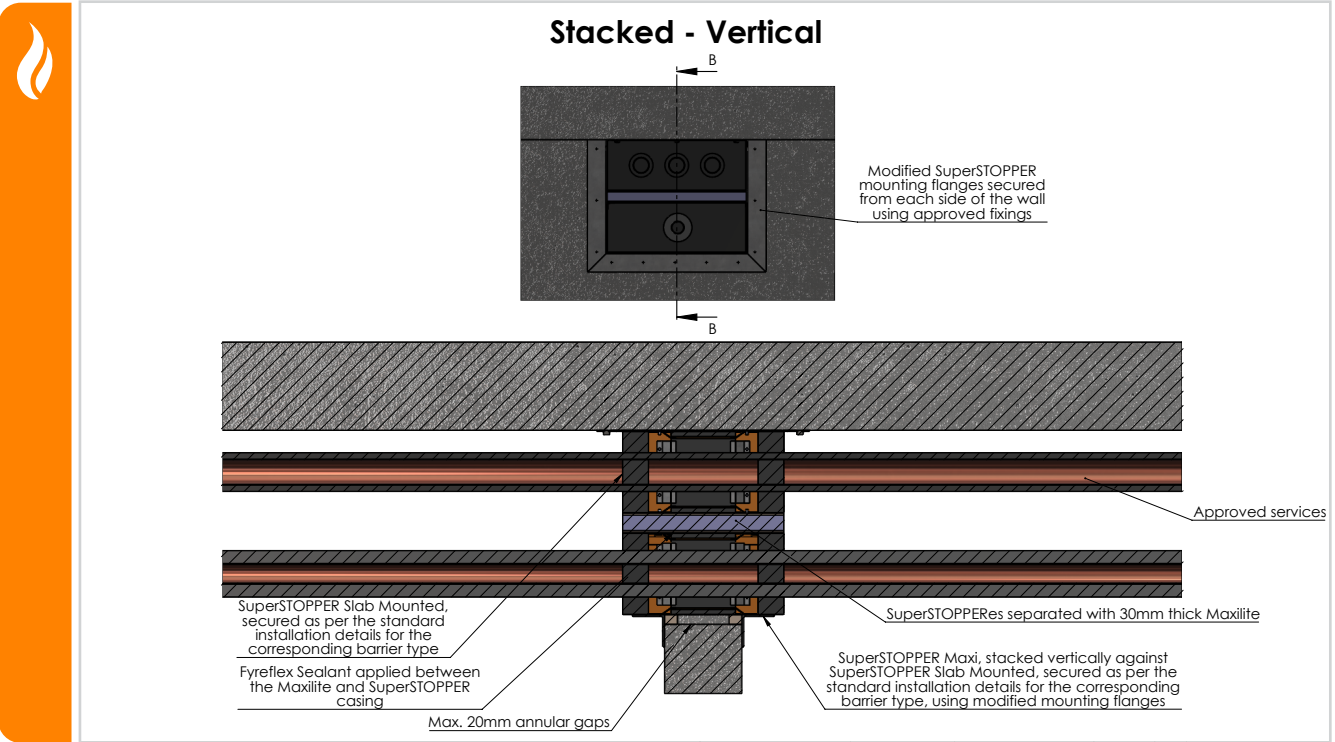
INSTALLATION ALTERNATIVES

SUPERSTOPPER® DOUBLE VERTICAL

SUPERSTOPPER® DOUBLE



Where a large run of services needs firestopping in a small width of wall.



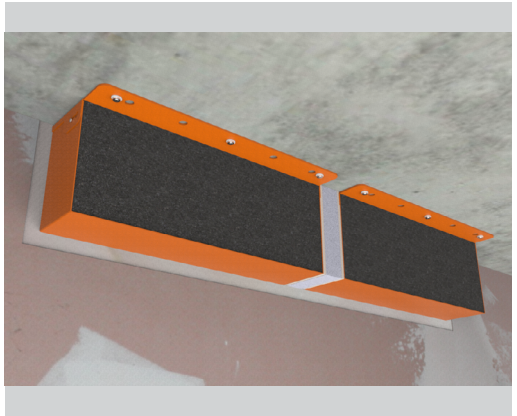
Click to Watch Installation Video



INSTALLATION ALTERNATIVES

SUPERSTOPPER® DOUBLE HORIZONTAL

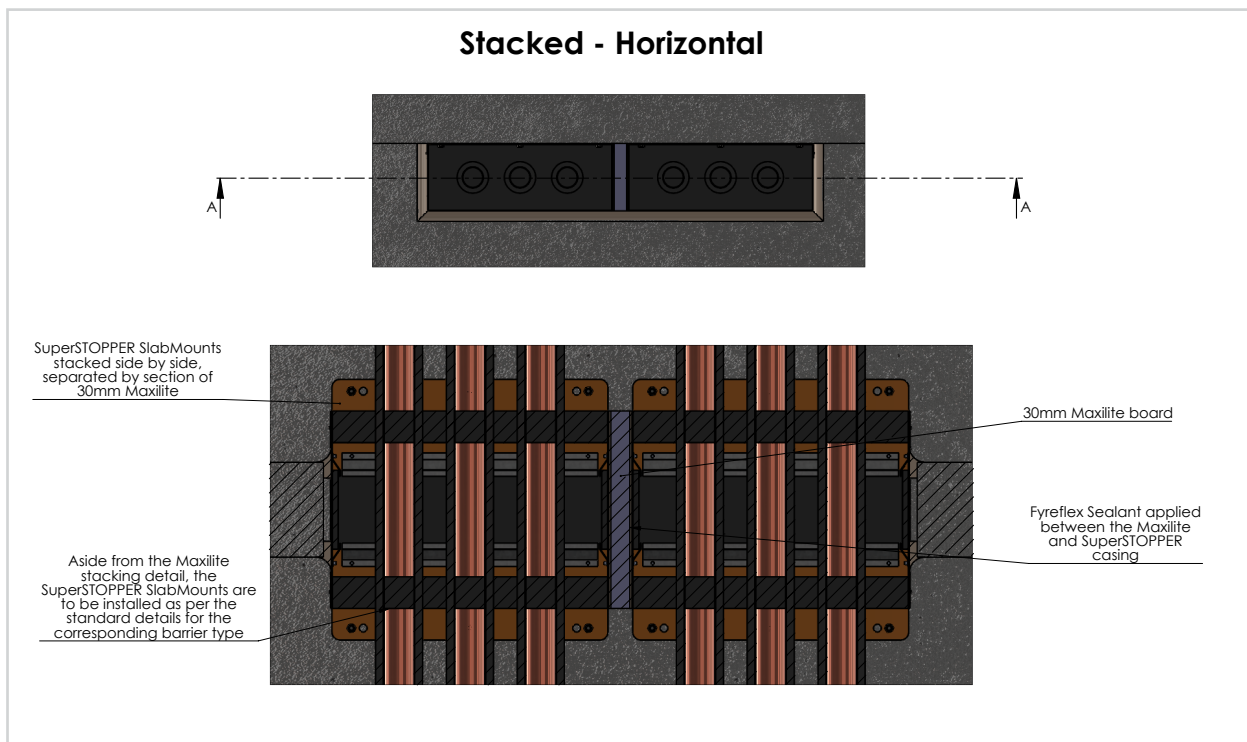
DOUBLE HORIZONTAL



For where large amounts of services exit a riser shaft wall.



Double vertical SuperSTOPPER® installed above a doorway to allow for the provision of large amounts of services in a small space.



Click to Watch Installation Video



INSTALLATION ALTERNATIVES

INTRWALL / PARTY WALLS

If TWRAP™ is required for the services to achieve the insulation rating as described in the tables on pages 6-15, install as follows.



STANDARD SUPERSTOPPER®

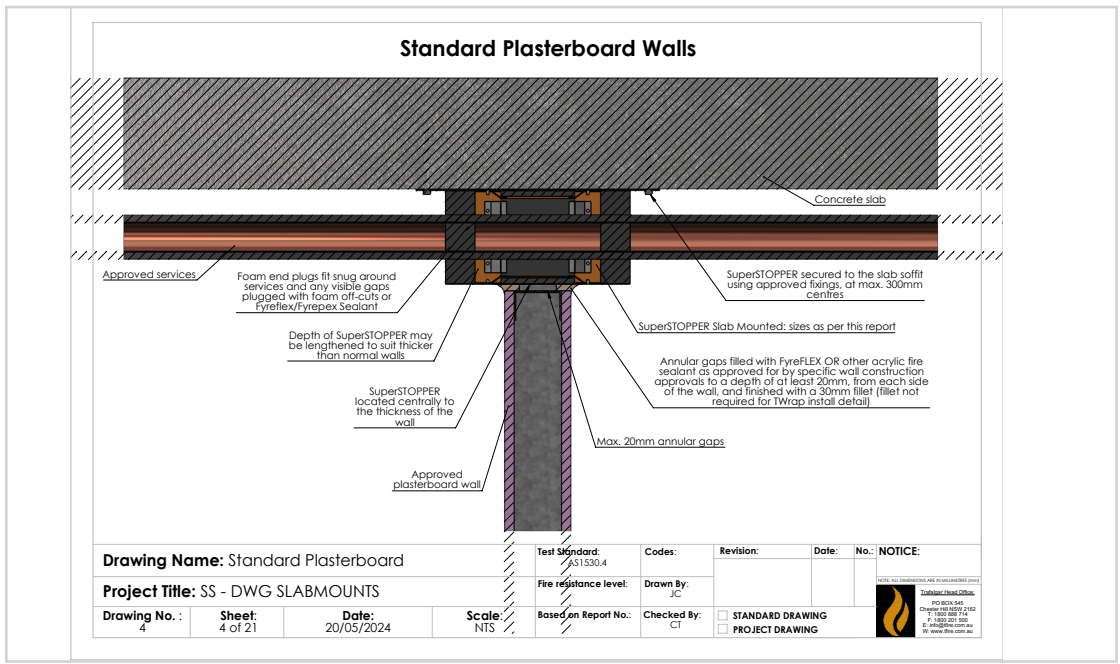
SuperSTOPPER® top plate, body and approved services all installed as standard to the soffit, with foam end plugs installed around the services.



INSTALL WALL

Install the wall as per the manufacturer's instruction.

FINISH



Click to Watch Installation Video



If the wall does not already require it, install a layer of FR plasterboard at the head of the wall.
Install the FyreFLEX Sealant to the full depth of the plasterboard & TWrap to the required length.

INSTALLATION CHECKLIST

PLASTERBOARD

SuperSTOPPER® Label/Identifier

No. _____

Installer Name: _____

Company: _____

Site: _____

Installation Checklist		Satisfactory	Action Required
1	Is the SuperSTOPPER® located centrally to the thickness of the wall?		
2	Are correct fixings (M6 masonry Anchors, 4mm gas or powder actuated anchors, or any other steel anchor of equal pull out rating) used to fix the top side of SuperSTOPPER® onto the floor slab?		
3	Are there 2 fixings per side, or maximum gap between the anchors at 300mm?		
4	Does the size of the wall opening allow for annular gap between the opening and SuperSTOPPER® within 5 to 20 mm?		
5	Are the services running through the SuperSTOPPER® as per the approved services list on the technical manual?		
6	Is the stud framing around the perimeter of the box installed as per the wall manufacturer's instructions?		
7	Is the sealant applied to correct depth of 20 mm on each side with a (fillet size of approximately 30x30mm) Note: If 3-sided wrap is used, fillet not required		
8	Is the foam snugly fit around the services and any visible gaps covered with foam off-cuts or FyreFLEX® sealant?		
Services only wrap (if applicable)			
1	Does the TWRAP™ wrap around the services and overlaps itself by 50mm?		
2	Is the TWRAP™ butted against the SuperSTOPPER® foam and end plugs?		
3	Is the TWRAP™ secured in three locations with reinforced aluminium tape or stainless-steel cable ties around the entire circumference?		
3-sided wrap (if applicable)			
1	Does the TWRAP™ cover the services including the SuperSTOPPER® and flaring at least 50mm at edges and against the slab?		
2	Is the correct steel tab (30x1x300mm) used to hold the TWRAP™ in place on both sides of the SuperSTOPPER®?		
3	Are correct fixings M6 masonry Anchors used to fix the steel tab and TWRAP™ onto the floor slab, 3x per side?		
4	Is the TWRAP™ butted up against the wall, around the box?		

For a full list of installation instructions, refer to the installation [pages 23-34](#) of this SuperSTOPPER® Slab-Mount Technical Man-

INSTALLATION CHECKLIST

AAC PANEL WALL

SuperSTOPPER® Label/Identifier

No. _____

Installer Name: _____

Company: _____

Site: _____

Installation Checklist		Satisfactory	Action Required
1	Is the SuperSTOPPER® located centrally to the thickness of the wall?		
2	Are correct fixings (M6 masonry Anchors, 4mm gas or powder actuated anchors, or any other steel anchor of equal pull out rating) used to fix the top side of SuperSTOPPER® onto the Floor slab?		
3	Are there 2 fixings per side, or maximum gap between the anchors at 300mm?		
4	Does the size of the wall opening allow for annular gap between the opening and SuperSTOPPER® within 5 to 20 mm?		
5	Are the services running through the SuperSTOPPER® as per the approved services list on the technical manual?		
6	Are the Hebel® wall's head track angles installed as per the wall manufacturer's instructions on both sides?		
7	Is the sealant applied to correct depth of 20 mm on each side with a (fillet size of approximately 30x30mm) Note: If 3-sided wrap is used, fillet not required		
8	Is the foam snugly fit around the services and any visible gaps covered with foam off-cuts or FyreFLEX® sealant?		
Services only wrap (if applicable)			
1	Is the FyreBOARD Maxilite® wall collar constructed correctly? (One side of the penetration using three 30mm thick x 100 mm FyreBOARD Maxilite® strips) *(FyreBOARD Maxilite® collar not needed if planning to use 3-sided TWRAP™)		
2	Are the boards fixed using 10gx60mm plasterboard screws at 150mm centres and flush with the wall opening?		
3	Is the resulting gap sealed with FyreFLEX® Sealant (full depth and fillet size of 30x30mm)?		
4	Does the TWRAP™ wrap around the services and overlaps itself by 50mm? (TWRAP™ only needs to be applied on conductive services)		
5	Is the TWRAP™ butted against the SuperSTOPPER® foam and end plugs?		
6	Is the TWRAP™ secured in three locations with reinforced aluminium tape or stainless-steel cable ties around the entire circumference?		
3-sided wrap (if applicable)			
1	Does the TWRAP™ cover the services including the SuperSTOPPER® and flaring at least 50mm at edges and against the slab?		
2	Is the correct steel tab (30x1x300mm) used to hold the TWRAP™ in place on both sides of the SuperSTOPPER®?		
3	Are correct fixings M6 masonry Anchors used to fix the steel tab and TWRAP™ onto the Floor slab, 3x per side?		
4	Is the TWRAP™ butted up against the wall, around the box?		

For a full list of installation instructions, refer to the installation [pages 23-34](#) of this SuperSTOPPER® Slab-Mount Technical

SYSTEM RANGE



CLICKABLE CODES

Item Number	Description	Dimensions
SuperSTOPPER®-SM-BAMBINO	160 x 125 x 250mm	
SuperSTOPPER®-SM-350	350 x 125 x 250mm	
SuperSTOPPER®-SM-550	550 x 125 x 250mm	
SuperSTOPPER®-SM-650	650 x 125 x 250mm	
SuperSTOPPER®-SM-Custom	Any size from 100 up to 1250 x 125 x 250mm	

SYSTEM COMPONENTS

CLICKABLE CODES

Item Number	Description	Min Order Qty
TWRAP- 300 x 810mm	300 x 810 x 25mm Pre Cut Strip	1
TWRAP- 300 x 1010mm	300 x 1010 x 25mm Pre Cut Strip	1
TWRAP Roll- 300mm	300 x 7620 x 25mm Full Roll	1
Maxilite Strips SuperSTOPPER® SM 350	1 Strip at 580 x 100 x 30mm 2 Strips at 145 x 100 x 30mm	-

COMPLIANCE



COMPLIANCE WITH THE NATIONAL CONSTRUCTION CODE (NCC)

Formerly known as BCA

Under the NCC requirements, a multiple service transit system for service penetrations should be fire tested in every configuration that it is intended for use in, both completely empty (blank seal), partially full and completely full of services so that the product may be installed with as many or as little services as required on site. It is important to fire test in all the different walls types and with different configurations, quantities and types of services which is a time consuming (and expensive) exercise.

Trafalgar Fire SuperSTOPPER® systems have been fire tested extensively to AS1530.4-2014 and approved in accordance with Section 4 AS4072.1 as required by Schedule 5 of the NCC. This includes over 200 hours of accredited furnace time and 30 plus individual test reports to cover the full range of service and wall configurations that allow us to comfortably stand behind our multiple SYSTEM approvals.

These configurations include but are not limited to:

- Service fill ratio: Empty (blank seal), half full and completely full of services
- Barrier types: Various types of plasterboard, concrete, Blockwork, Hebel®, Walsc®, Speedpanel®, Pronto panel, FyreBOARD Maxilite®, concrete floors, plasterboard ceilings, corex walls etc
- Services: Bare and insulated metal pipes, cable trays and cable bundles, aluminium cables, PVC pipes & conduits, PEX and PEX-AL-PEX pipes, cPVC pipes etc
- Configurations: Blank seal (empty), full of services, double stacked, side by side etc
- Insulation performance: Tested both wrapped and unwrapped with TWRAP™ to ensure the system works in both configurations
- Penetration sizes: 150 x 125, 350x125, 550x125, 1100x125
- SuperSTOPPER® Variants: Slab-Mount, Slab-Mount Bambino, Cast-in, Maxi & Mini (retrofit)

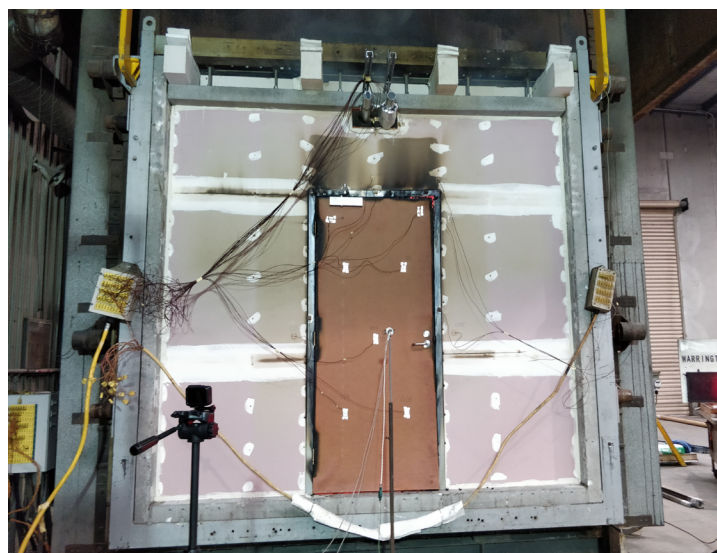
When choosing a multiple service transit penetration system like SuperSTOPPER®, it is important to check that all aspects of your system have been fire tested and are fit for purpose.

Compliance will only be achieved when the installation on site mirrors the tested system.

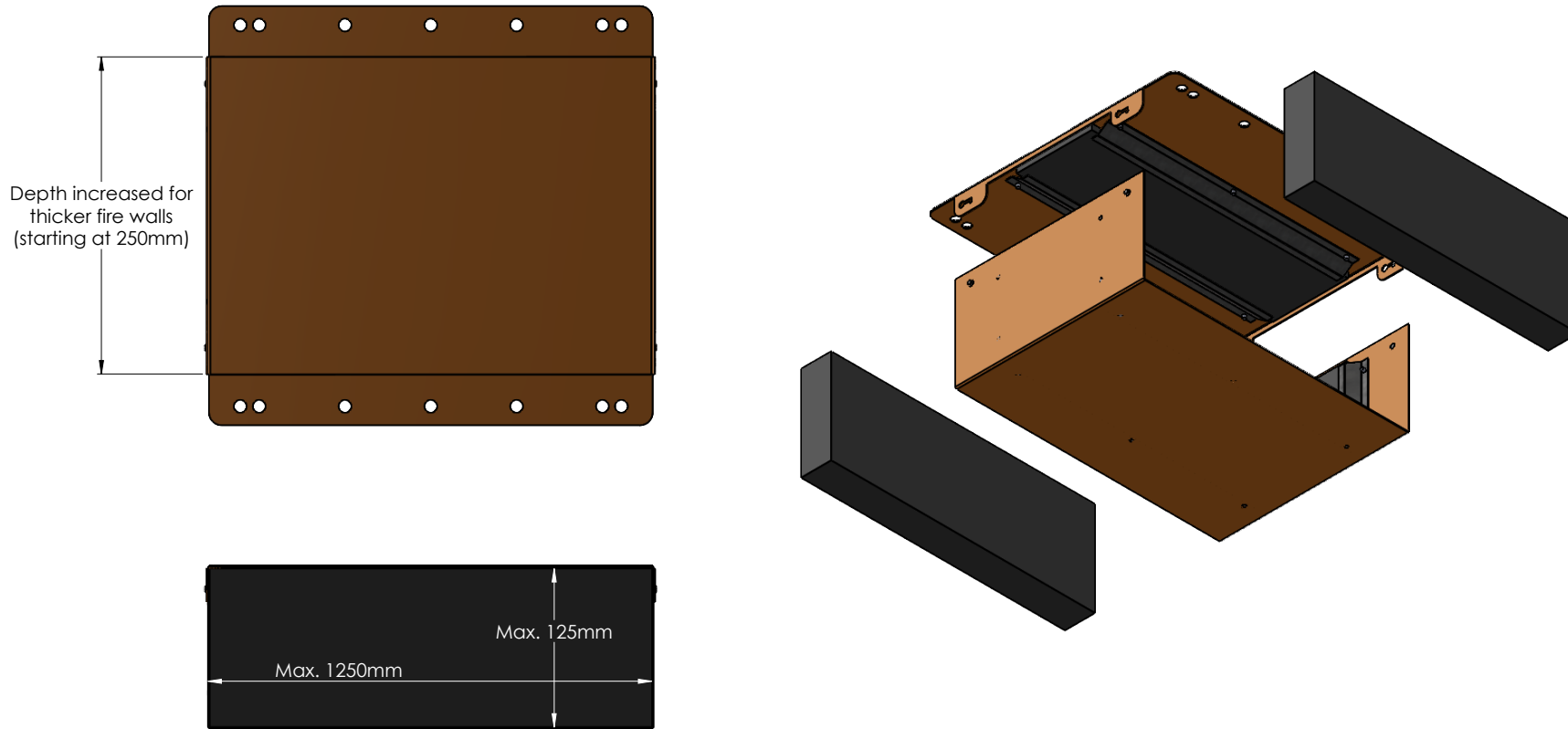
TEST AND ASSESSMENT REPORTS


The above-mentioned fire testing reports have all been conveniently summarised into **BRANZ assessment report FC10266 (available on www.tfire.com.au)** which neatly tabulates the approved services in a range of fire barriers, for all SuperSTOPPER® variants and applications, and covers only minor variations to the tested systems, thereby providing trouble free certification according to NCC.

Importantly, every aspect of the assessment report are backed up by the fire test data and the individual fire test reports are available on request for certification purposes.

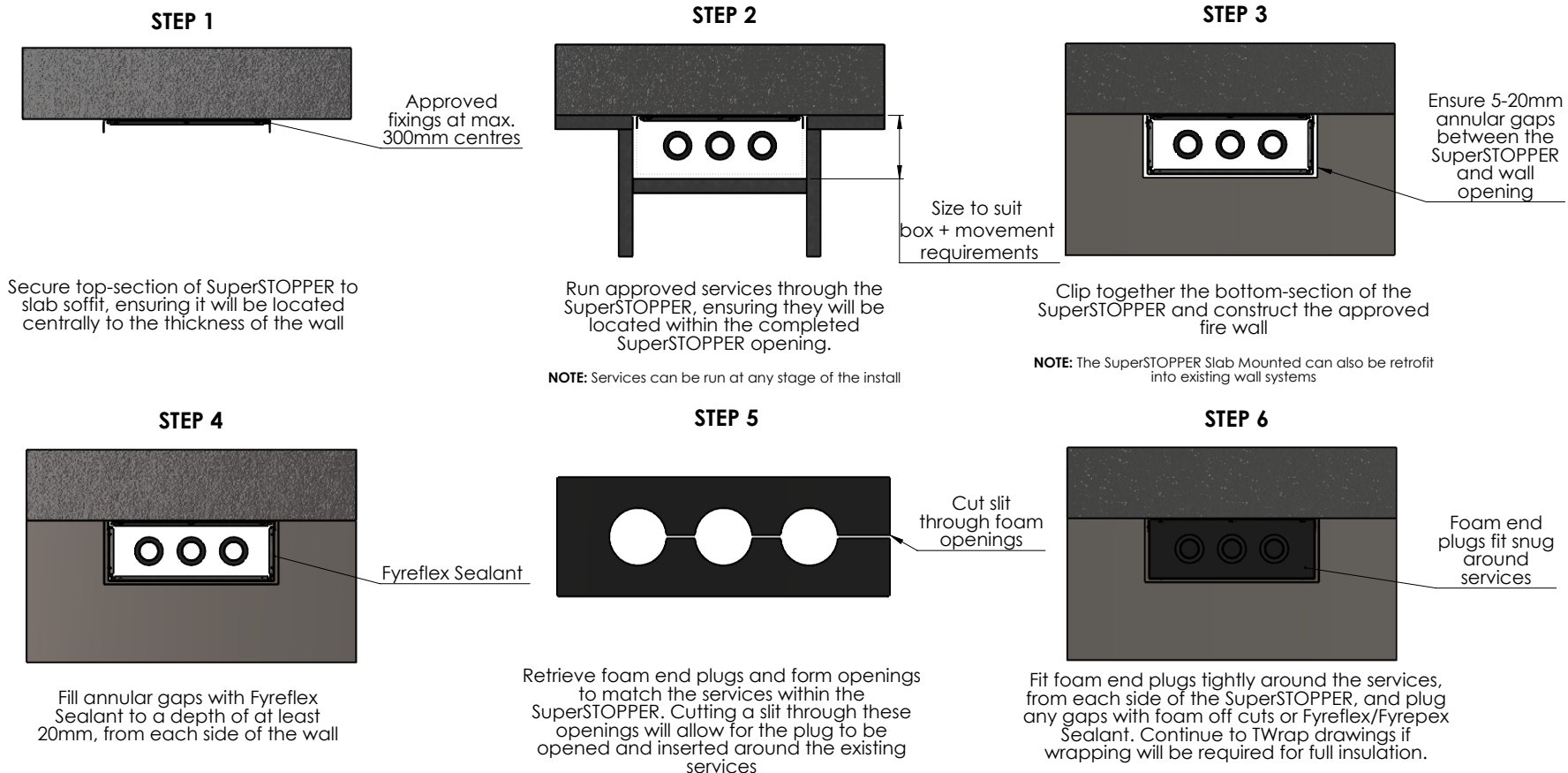


SuperSTOPPER Slab Mounted - Product Overview




Drawing Name: SuperSTOPPER Slab Mounted				Test Standard: AS1530.4	Codes:	Revision:	Date:	No.:	NOTICE:
Project Title: SS - DWG SLABMOUNTS				Fire resistance level:	Drawn By: JC	<small>NOTE: ALL DIMENSIONS ARE IN MILLIMETRES (mm)</small>  Trafalgar Head Office: PO BOX 545 Chester Hill NSW 2162 T: 1800 888 714 F: 1800 201 500 E: info@tfire.com.au W: www.tfire.com.au			
Drawing No. : 1	Sheet: 1 of 21	Date: 20/05/2024	Scale: NTS	Based on Report No.:	Checked By: CT				

SuperSTOPPER Slab Mounted - Installation Overview



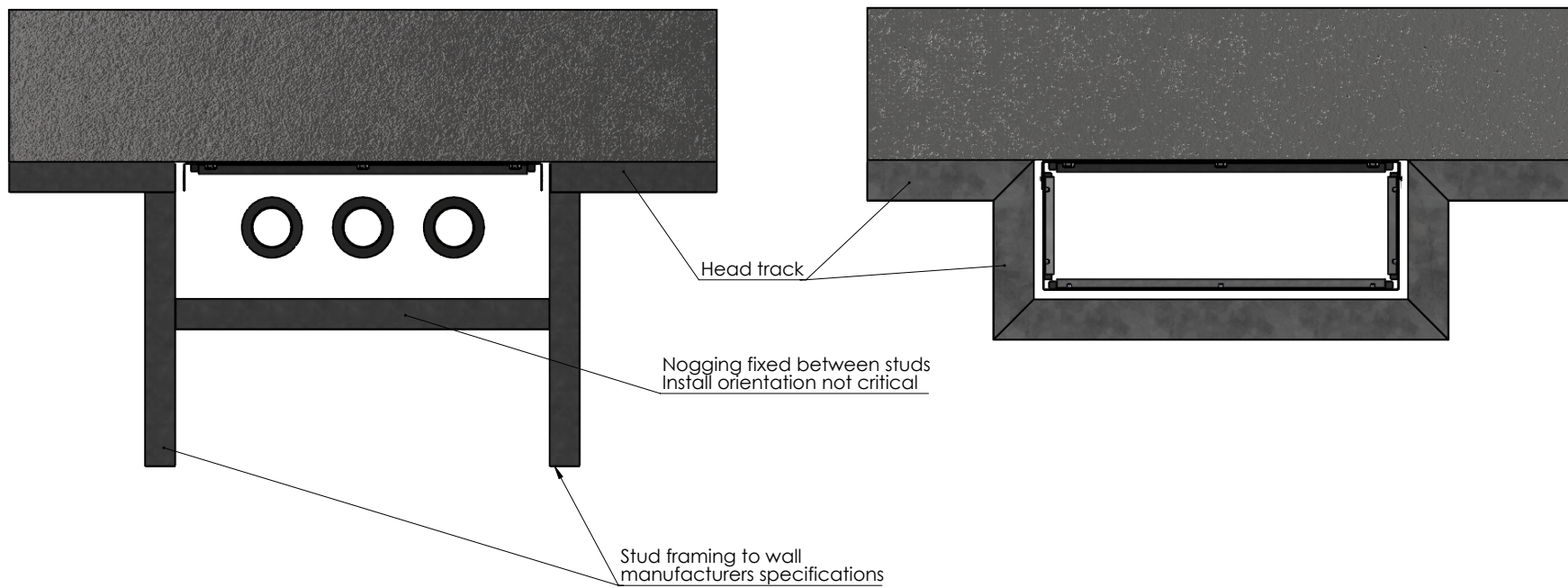
NOTE: This is a generic installation guide. For specific details relevant to each barrier type, please refer to the corresponding installation drawing.

Drawing Name: Installation Overview				Test Standard: AS1530.4	Codes:	Revision:	Date:	No.:	NOTICE:
Project Title: SS - DWG SLABMOUNTS				Fire resistance level:	Drawn By: JC				<small>NOTE: ALL DIMENSIONS ARE IN MILLIMETRES (mm)</small>  Trafalgar Head Office: PO BOX 545 Chester Hill NSW 2162 T: 1800 888 714 F: 1800 201 500 E: info@tfire.com.au W: www.tfire.com.au
Drawing No. : 2	Sheet: 2 of 21	Date: 20/05/2024	Scale: NTS	Based on Report No.:	Checked By: CT	<input type="checkbox"/> STANDARD DRAWING <input type="checkbox"/> PROJECT DRAWING			


Plasterboard framing details

Option A - Full-width nogging between studs
Recommended for areas above fire doors

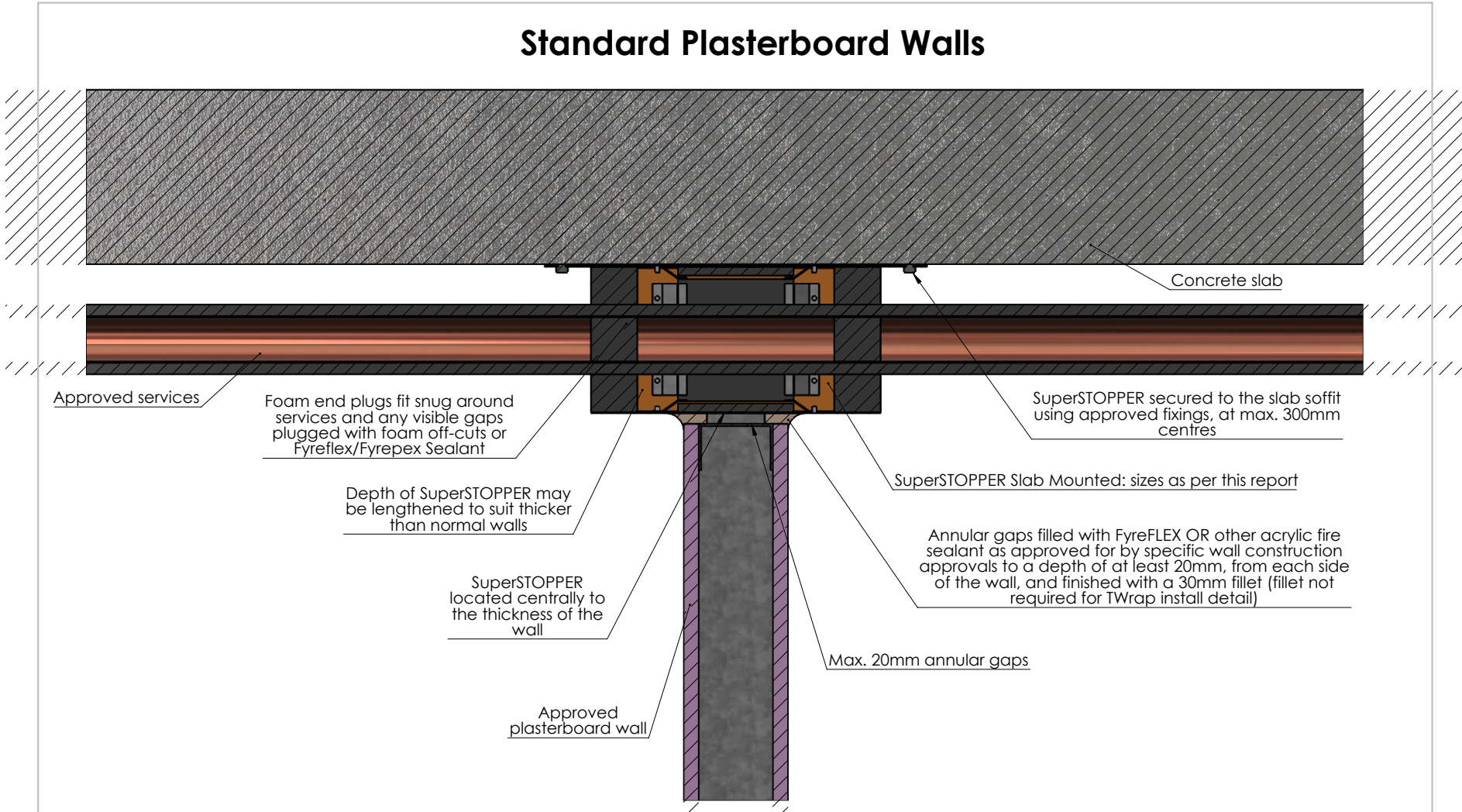
Option B - Head track contoured around opening
Recommended for penetrations remote from fire doors




- Notes:
- Both options are as-tested
 - Both options have been tested without the opening being lined with plasterboard
 - When located above fire doors, option A is the recommended installation detail
 - Openings are to allow sufficient clearance for building movement

Drawing Name: Plaster framing details				Test Standard: AS1530.4	Codes:	Revision:	Date:	No.:	NOTICE:
Project Title: SS - DWG SLABMOUNTS				Fire resistance level:	Drawn By: JC				<small>NOTE: ALL DIMENSIONS ARE IN MILLIMETRES (mm)</small>  Trafalgar Head Office: PO BOX 545 Chester Hill NSW 2162 T: 1800 888 714 F: 1800 201 500 E: info@tfire.com.au W: www.tfire.com.au
Drawing No. : 3	Sheet: 3 of 21	Date: 20/05/2024	Scale: NTS	Based on Report No.:	Checked By: CT	<input type="checkbox"/> STANDARD DRAWING <input type="checkbox"/> PROJECT DRAWING			

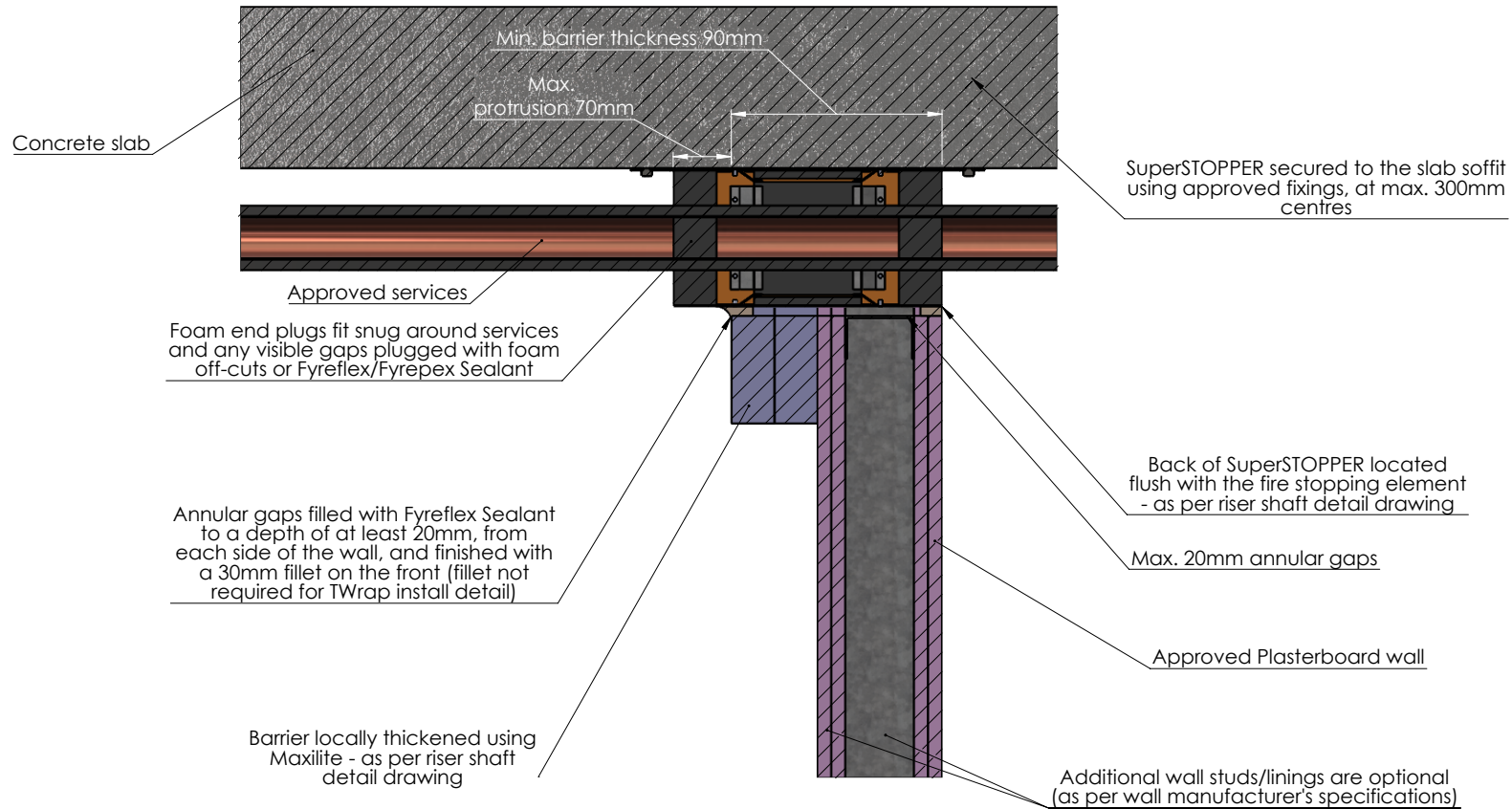
Standard Plasterboard Walls



Drawing Name: Standard Plasterboard				Test Standard: AS1530.4	Codes:	Revision:	Date:	No.:	NOTICE:
Project Title: SS - DWG SLABMOUNTS				Fire resistance level:	Drawn By: JC				<small>NOTE: ALL DIMENSIONS ARE IN MILLIMETRES (mm)</small>  Trafalgar Head Office: PO BOX 545 Chester Hill NSW 2162 T: 1800 888 714 F: 1800 201 500 E: info@tfire.com.au W: www.tfire.com.au
Drawing No. : 4	Sheet: 4 of 21	Date: 20/05/2024	Scale: NTS	Based on Report No.:	Checked By: CT	<input type="checkbox"/> STANDARD DRAWING <input type="checkbox"/> PROJECT DRAWING			

Plasterboard Walls - Built From One Side Only

- Direction of fire rating will be limited to that of the wall system
- All deflection head tracks must be notched and re-instated around the SuperSTOPPER



Drawing Name: Plasterboard Built On One Side

Project Title: SS - DWG SLABMOUNTS

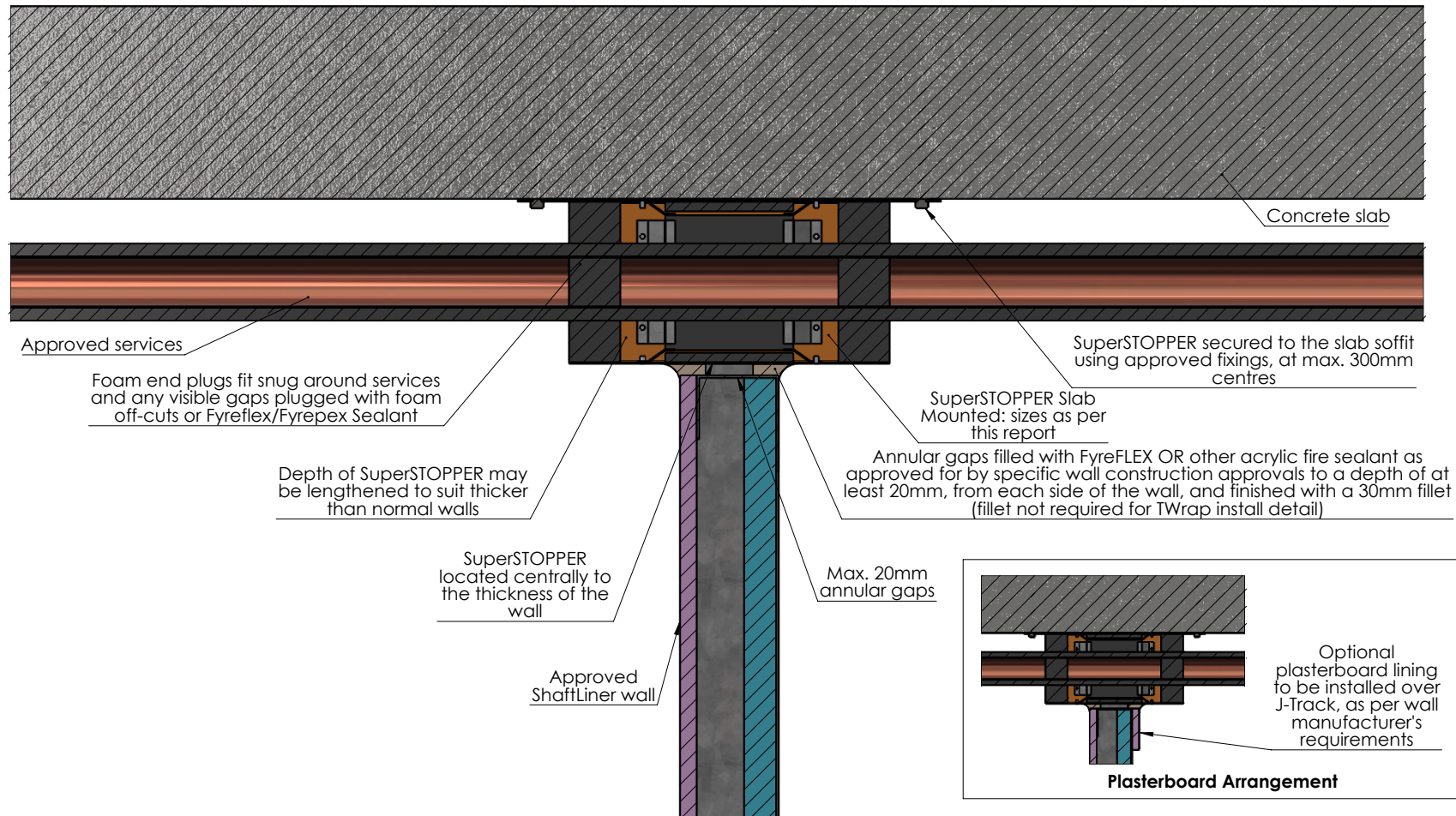
Test Standard: AS1530.4	Codes:	Revision:	Date:	No.:	NOTICE:
-----------------------------------	---------------	------------------	--------------	-------------	----------------

Fire resistance level:	Drawn By: JC	<small>NOTE: ALL DIMENSIONS ARE IN MILLIMETRES (mm)</small>  Trafalgar Head Office: PO BOX 545 Chester Hill NSW 2162 T: 1800 888 714 F: 1800 201 500 E: info@tfire.com.au W: www.tfire.com.au			
-------------------------------	------------------------	--	--	--	--

Drawing No. : 5	Sheet: 5 of 21	Date: 20/05/2024	Scale: NTS
---------------------------	--------------------------	----------------------------	----------------------

Based on Report No.:	Checked By: CT	<input type="checkbox"/> STANDARD DRAWING <input type="checkbox"/> PROJECT DRAWING
-----------------------------	--------------------------	---

ShaftLiner Walls



Drawing Name: ShaftLiner

Project Title: SS - DWG SLABMOUNTS

Drawing No. :
6

Sheet:
6 of 21

Date:
20/05/2024

Scale:
NTS

Test Standard:
AS1530.4

Fire resistance level:

Based on Report No.:

Codes:

Drawn By:
JC

Checked By:
CT

Revision:

STANDARD DRAWING
 PROJECT DRAWING

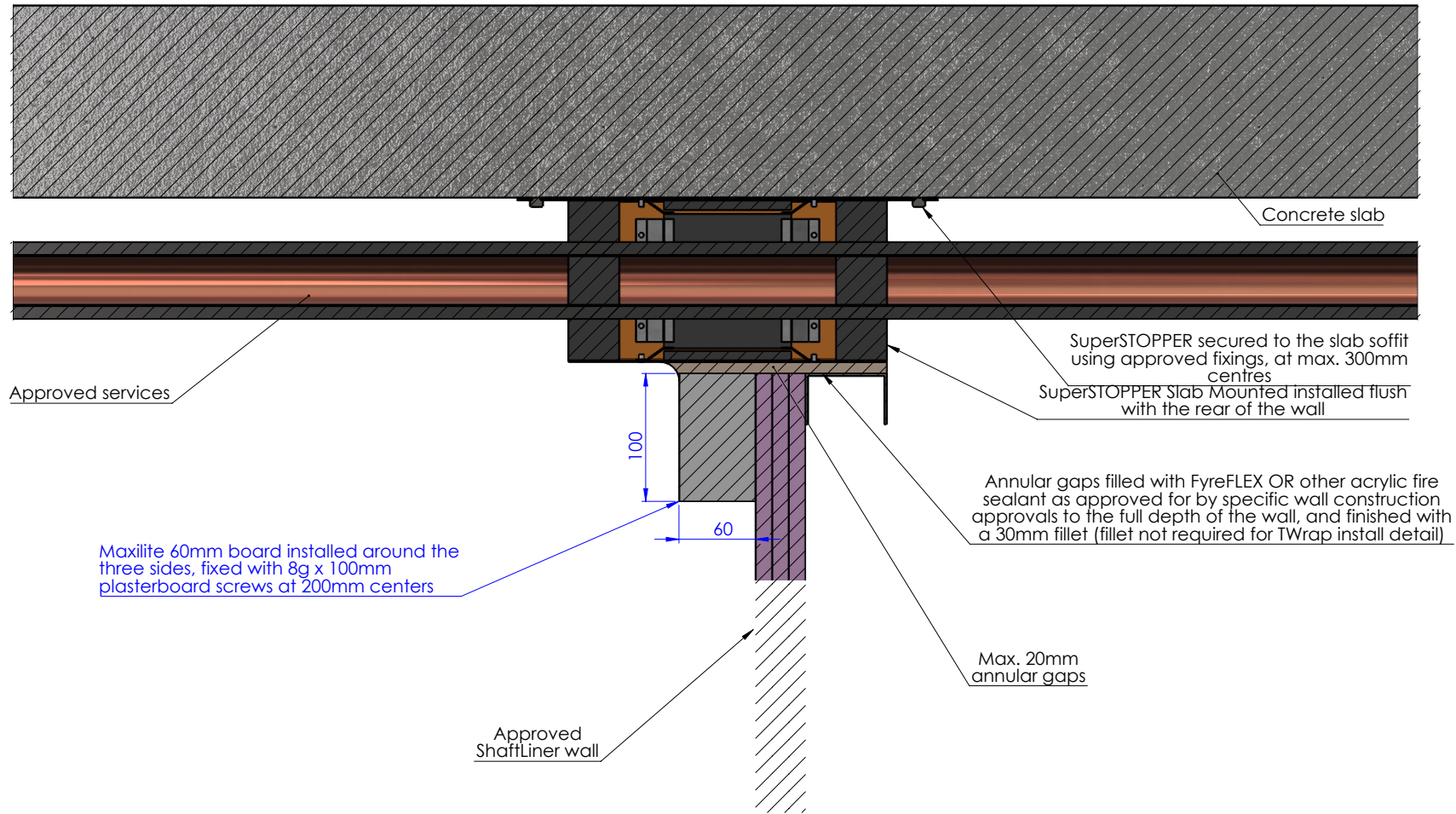
Date:


No.:

NOTICE:

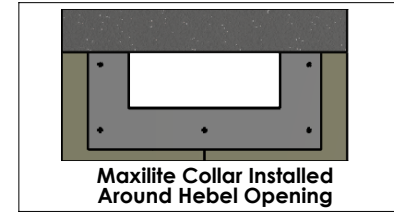
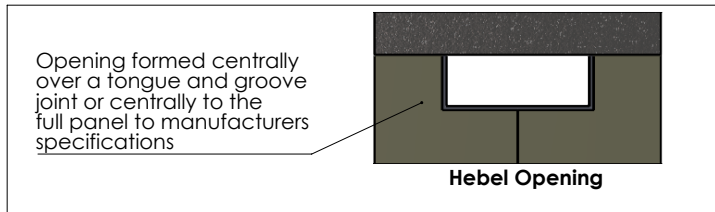
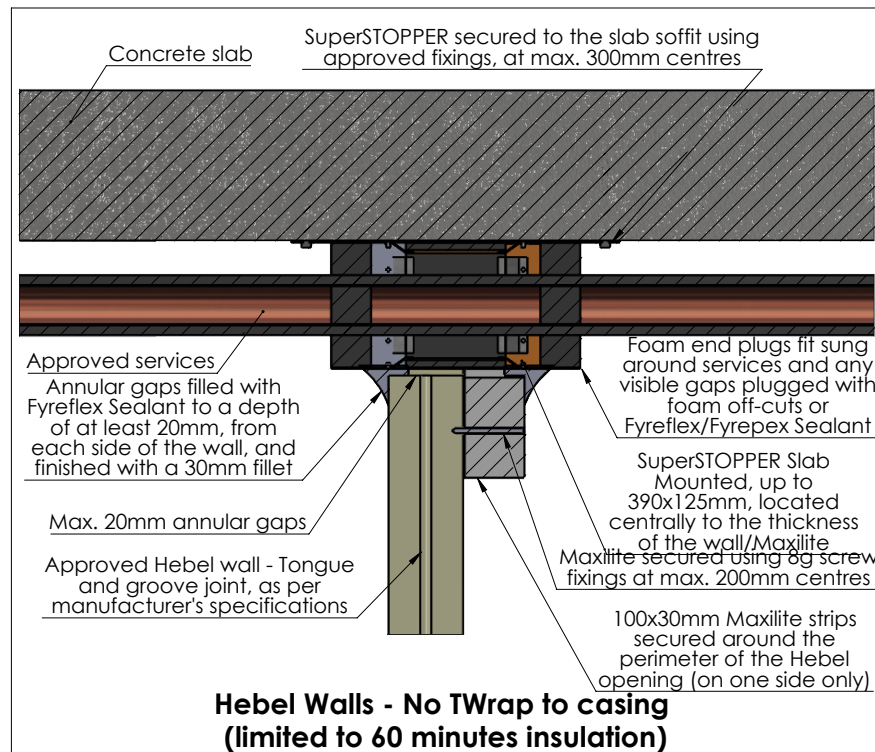
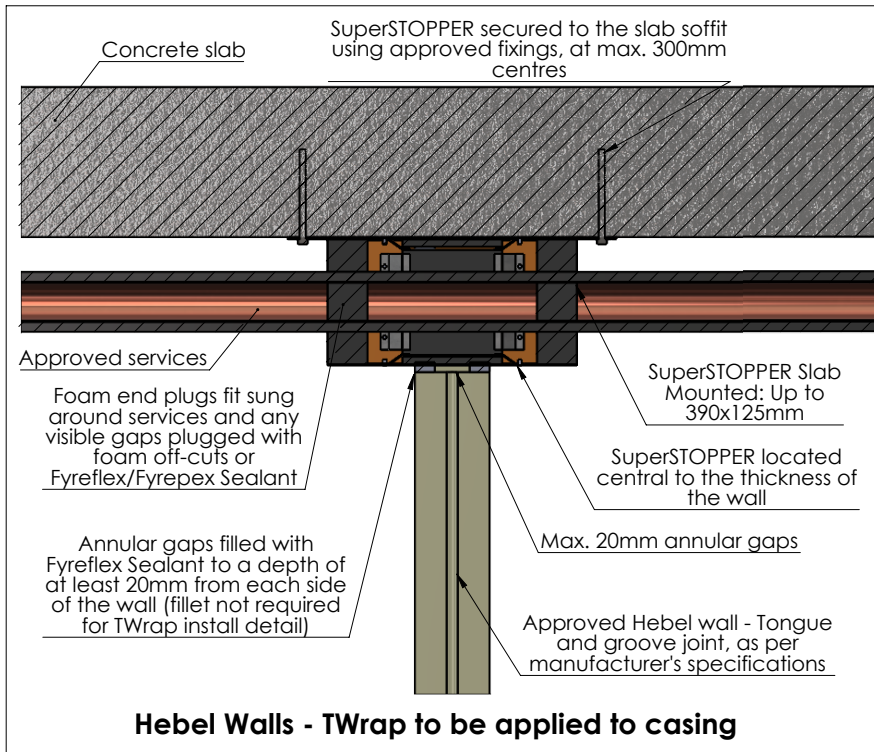
NOTE: ALL DIMENSIONS ARE IN MILLIMETRES (mm)
Trafalgar Head Office:
PO BOX 545
Chester Hill NSW 2162
T: 1800 888 714
F: 1800 201 500
E: info@tfire.com.au
W: www.tfire.com.au


ShaffLiner Walls



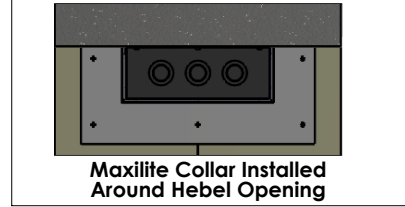
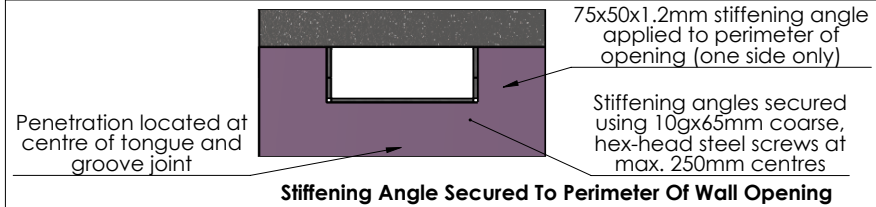
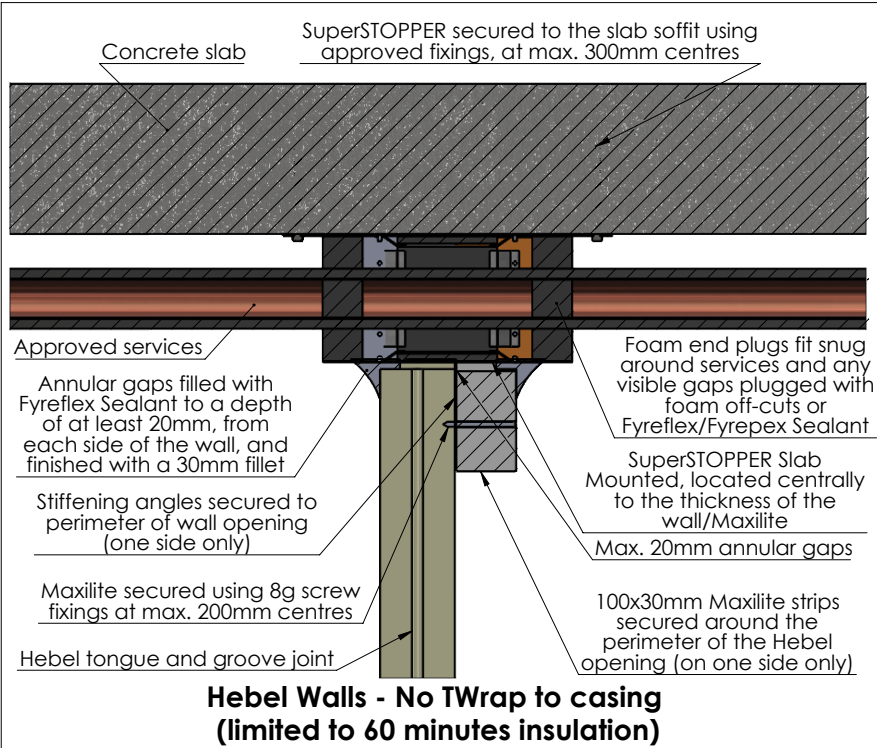
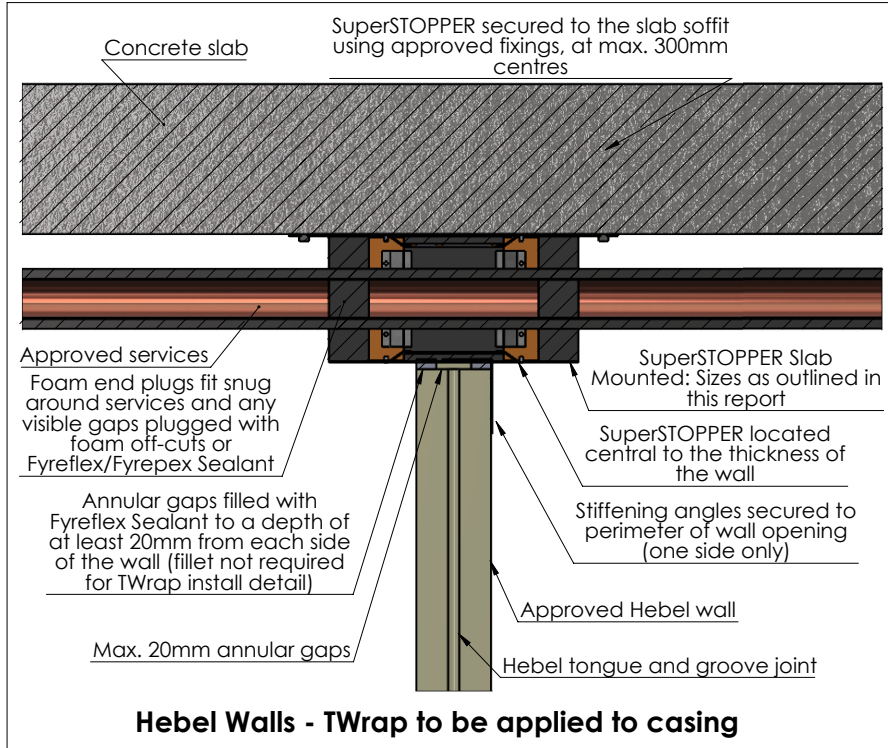
Drawing Name: Laminated Shaft Liner				Test Standard: AS1530.4	Codes:	Revision:	Date:	No.:	NOTICE:
Project Title: SS - DWG SLABMOUNTS				Fire resistance level:	Drawn By: JC				<small>NOTE: ALL DIMENSIONS ARE IN MILLIMETRES (mm)</small>  Trafalgar Head Office: PO BOX 545 Chester Hill NSW 2162 T: 1800 888 714 F: 1800 201 500 E: info@tfire.com.au W: www.tfire.com.au
Drawing No. : 7	Sheet: 7 of 21	Date: 20/05/2024	Scale: NTS	Based on Report No.:	Checked By: CT	<input type="checkbox"/> STANDARD DRAWING <input type="checkbox"/> PROJECT DRAWING			


Hebel/Walsc AAC Walls - Openings up to 400x170mm



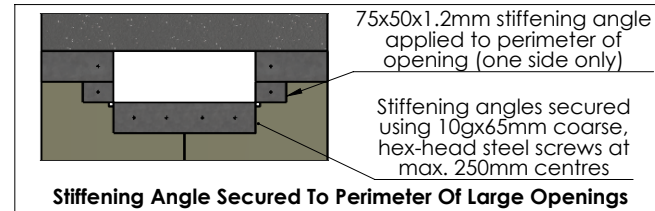
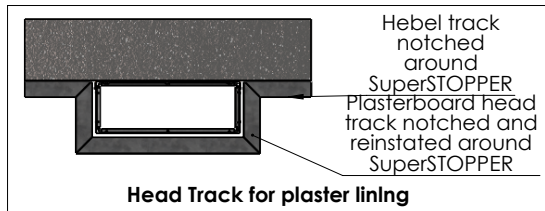
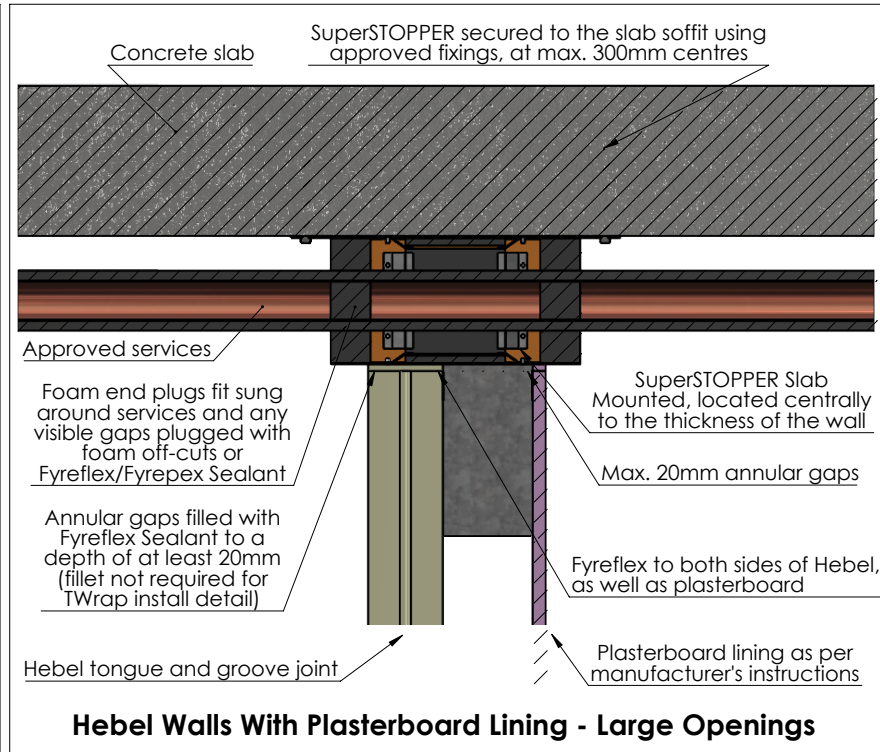
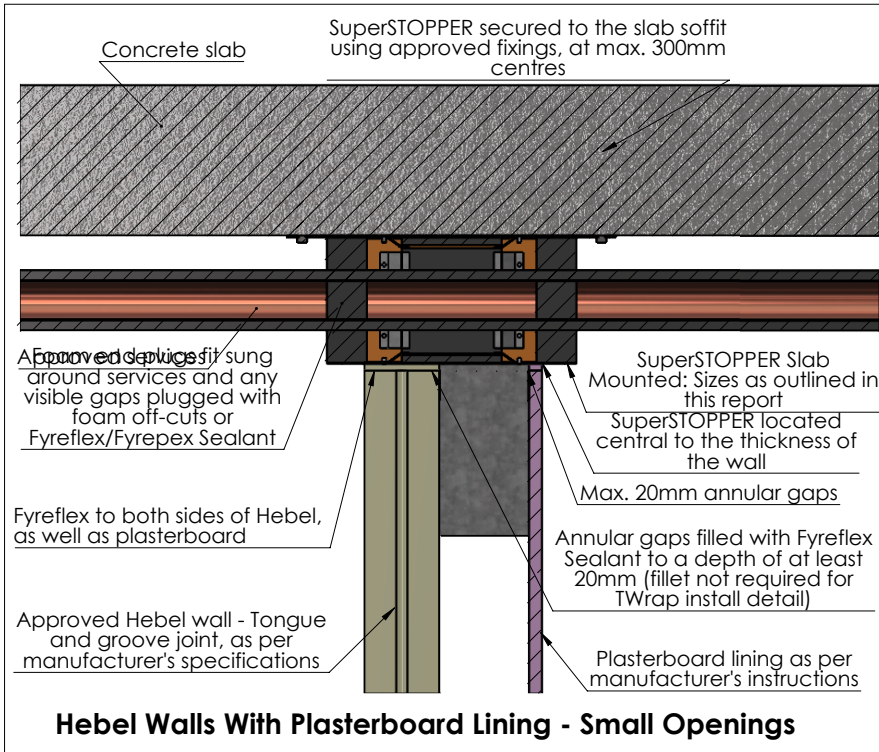
Drawing Name: Hebel/Walsc - Small Openings				Test Standard: AS1530.4	Codes:	Revision:	Date:	No.:	NOTICE:
Project Title: SS - DWG SLABMOUNTS				Fire resistance level:	Drawn By: JC	<small>NOTE: ALL DIMENSIONS ARE IN MILLIMETRES (mm)</small>  Trafalgar Head Office: PO BOX 545 Chester Hill NSW 2162 T: 1800 888 714 F: 1800 201 500 E: info@tfire.com.au W: www.tfire.com.au			
Drawing No. : 8	Sheet: 8 of 21	Date: 20/05/2024	Scale: NTS	Based on Report No.:	Checked By: CT				


Hebel/Walsc AAC Walls - Openings greater than 400x170mm



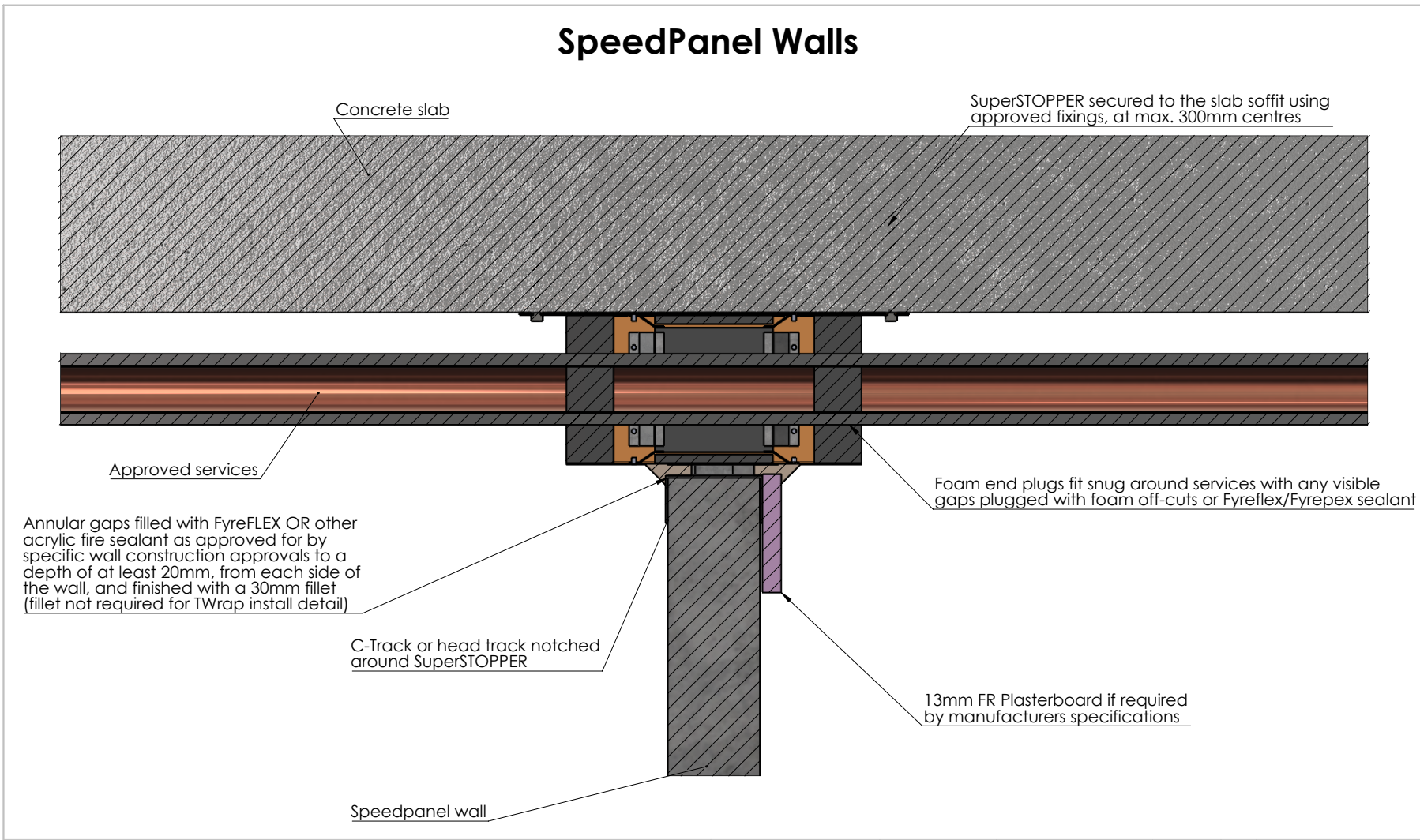
Drawing Name: Hebel/Walsc - Large Openings				Test Standard: AS1530.4	Codes:	Revision:	Date:	No.:	NOTICE:
Project Title: SS - DWG SLABMOUNTS				Fire resistance level:	Drawn By: JC				<small>NOTE: ALL DIMENSIONS ARE IN MILLIMETRES (mm)</small>  Trafalgar Head Office: PO BOX 545 Chester Hill NSW 2162 T: 1800 888 714 F: 1800 201 500 E: info@tfire.com.au W: www.tfire.com.au
Drawing No. : 9	Sheet: 9 of 21	Date: 20/05/2024	Scale: NTS	Based on Report No.:	Checked By: CT	<input type="checkbox"/> STANDARD DRAWING <input type="checkbox"/> PROJECT DRAWING			


Hebel Walls - FR Plasterboard Lining



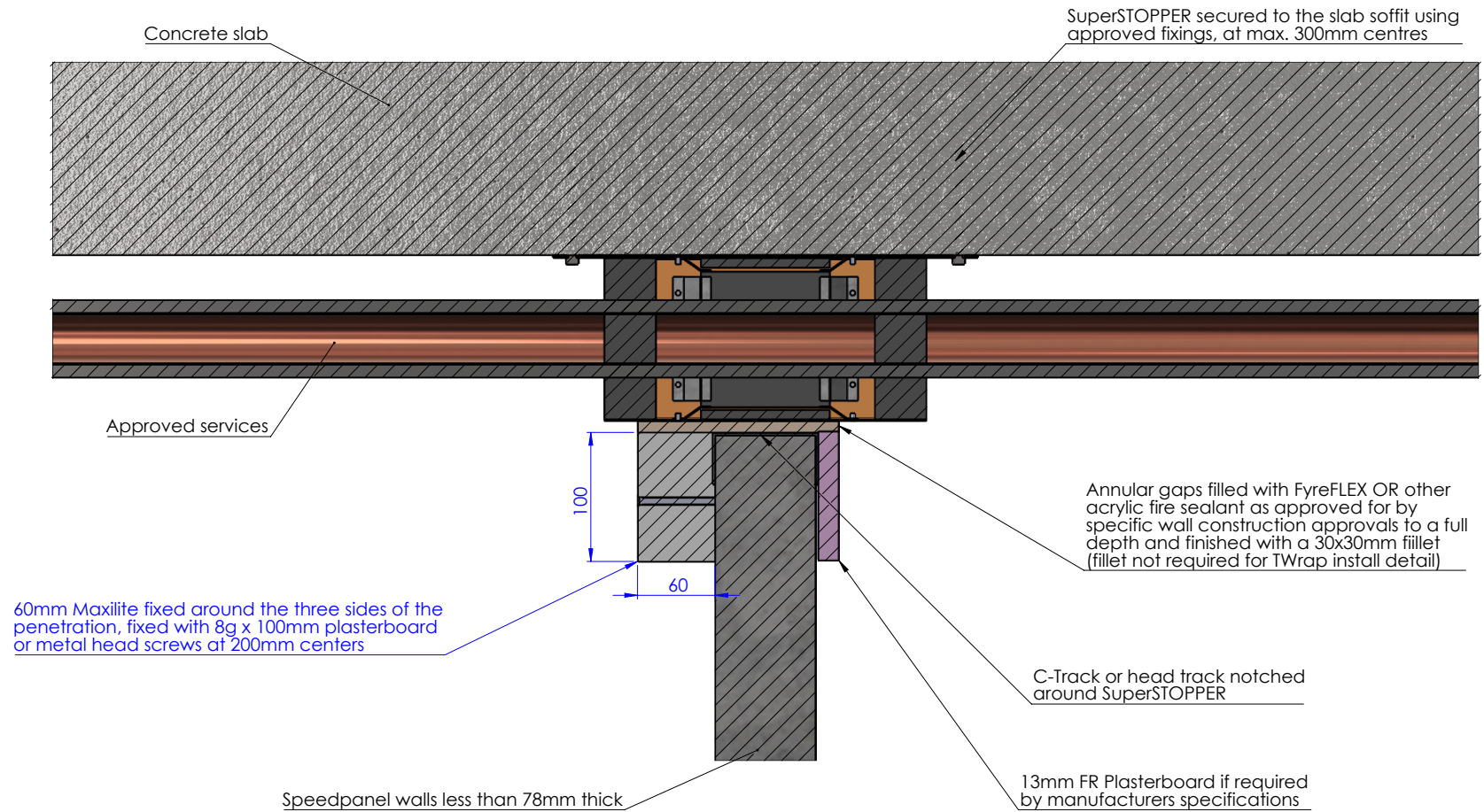
Drawing Name: Hebel - Plasterboard Lining				Test Standard: AS1530.4	Codes:	Revision:	Date:	No.:	NOTICE:
Project Title: SS - DWG SLABMOUNTS				Fire resistance level:	Drawn By: JC	<small>NOTE: ALL DIMENSIONS ARE IN MILLIMETRES (mm)</small>  Trafalgar Head Office: PO BOX 545 Chester Hill NSW 2162 T: 1800 888 714 F: 1800 201 500 E: info@fire.com.au W: www.fire.com.au			
Drawing No. : 10	Sheet: 10 of 21	Date: 20/05/2024	Scale: NTS	Based on Report No.:	Checked By: CT				


SpeedPanel Walls



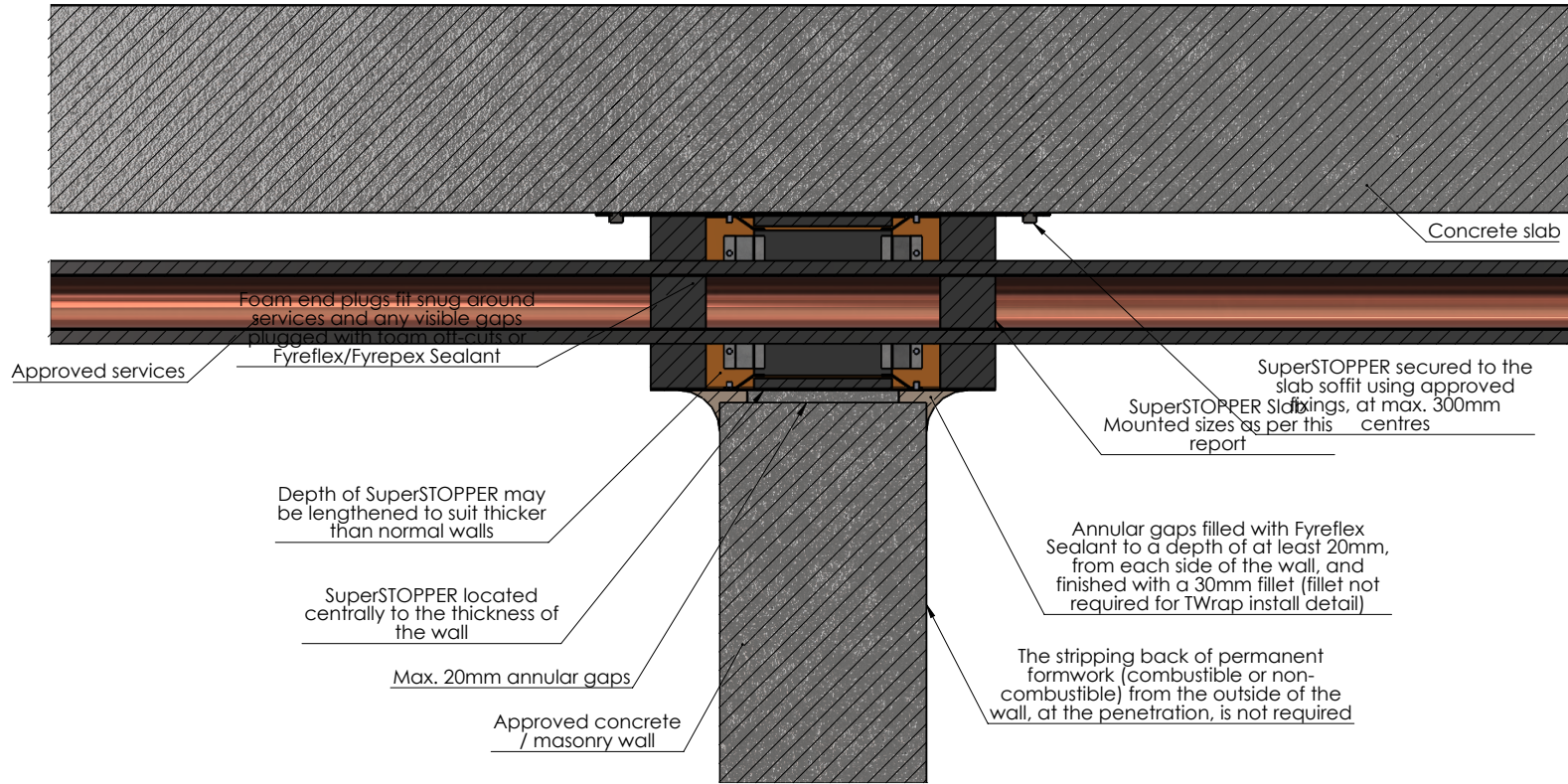
Drawing Name: SpeedPanel			Test Standard: AS1530.4	Codes:	Revision:	Date:	No.:	NOTICE:
Project Title: SS - DWG SLABMOUNTS			Fire resistance level: SECTION T-T SCALE 1 : 3	Drawn By: JC	<small>NOTE: ALL DIMENSIONS ARE IN MILLIMETRES (mm)</small>  Trafalgar Head Office: PO BOX 545 Chester Hill NSW 2162 T: 1800 888 714 F: 1800 201 500 E: info@tfire.com.au W: www.tfire.com.au			
Drawing No. : 11	Sheet: 11 of 21	Date: 20/05/2024	Scale: NTS	Based on Report No.:				

SpeedPanel Walls Less Than 78mm Thick



Drawing Name: SpeedPanel <78mm				Test Standard: AS1530.4	Codes:	Revision:	Date:	No.:	NOTICE:
Project Title: SS - DWG SLABMOUNTS				Fire resistance level:	Drawn By: JC				<small>NOTE: ALL DIMENSIONS ARE IN MILLIMETRES (mm)</small>  Trafalgar Head Office: PO BOX 545 Chester Hill NSW 2162 T: 1800 888 714 F: 1800 221 500 E: info@tfire.com.au W: www.tfire.com.au
Drawing No. : 12	Sheet: 12 of 21	Date: 20/05/2024	Scale: NTS	Based on Report No.:	Checked By: CT	<input type="checkbox"/> STANDARD DRAWING <input type="checkbox"/> PROJECT DRAWING			

Concrete / Masonry Walls (with or without permanent formwork)



Drawing Name: Concrete / Masonry

Test Standard:
AS1530.4

Codes:

Revision:

Date:

No.:

NOTICE:

Project Title: SS - DWG SLABMOUNTS

Fire resistance level:

Drawn By:
JC

NOTE: ALL DIMENSIONS ARE IN MILLIMETRES (mm)

Drawing No. :
13

Sheet:
13 of 21

Date:
20/05/2024

Scale:
NTS

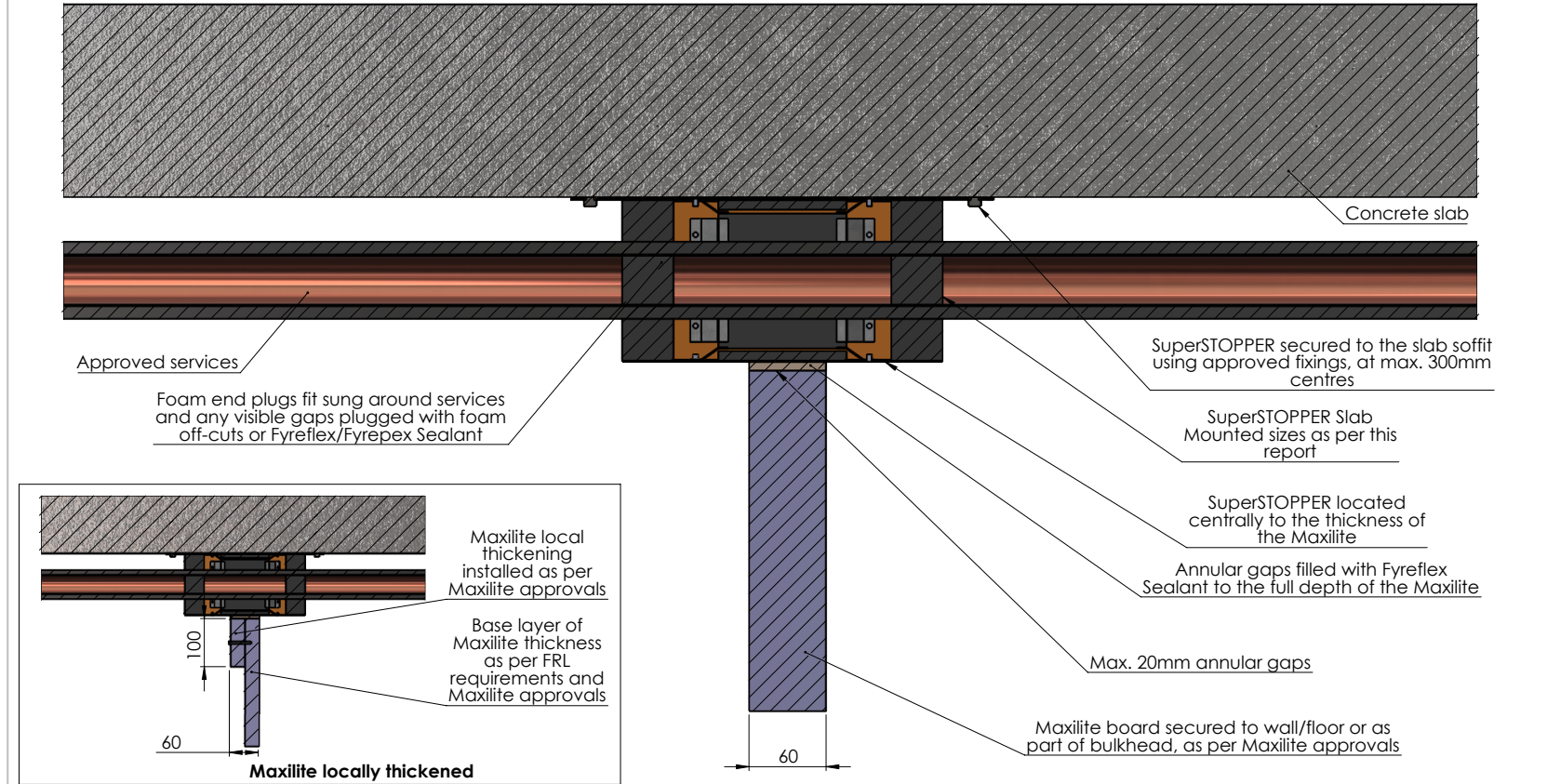
Based on Report No.:

Checked By:
CT

STANDARD DRAWING
 PROJECT DRAWING

Trafalgar Head Office:
PO BOX 545
Chester Hill NSW 2162
T: 1800 888 714
F: 1800 201 500
E: info@tfire.com.au
W: www.tfire.com.au

Maxilite



Drawing Name: Maxilite

Project Title: SS - DWG SLABMOUNTS

Drawing No. :
14

Sheet:
14 of 21

Date:
20/05/2024

Scale:
NTS

Test Standard:
AS1530.4

Fire resistance level:

Based on Report No.:

Codes:

Drawn By:
JC

Checked By:
CT

Revision:

Date:

No.:

NOTICE:

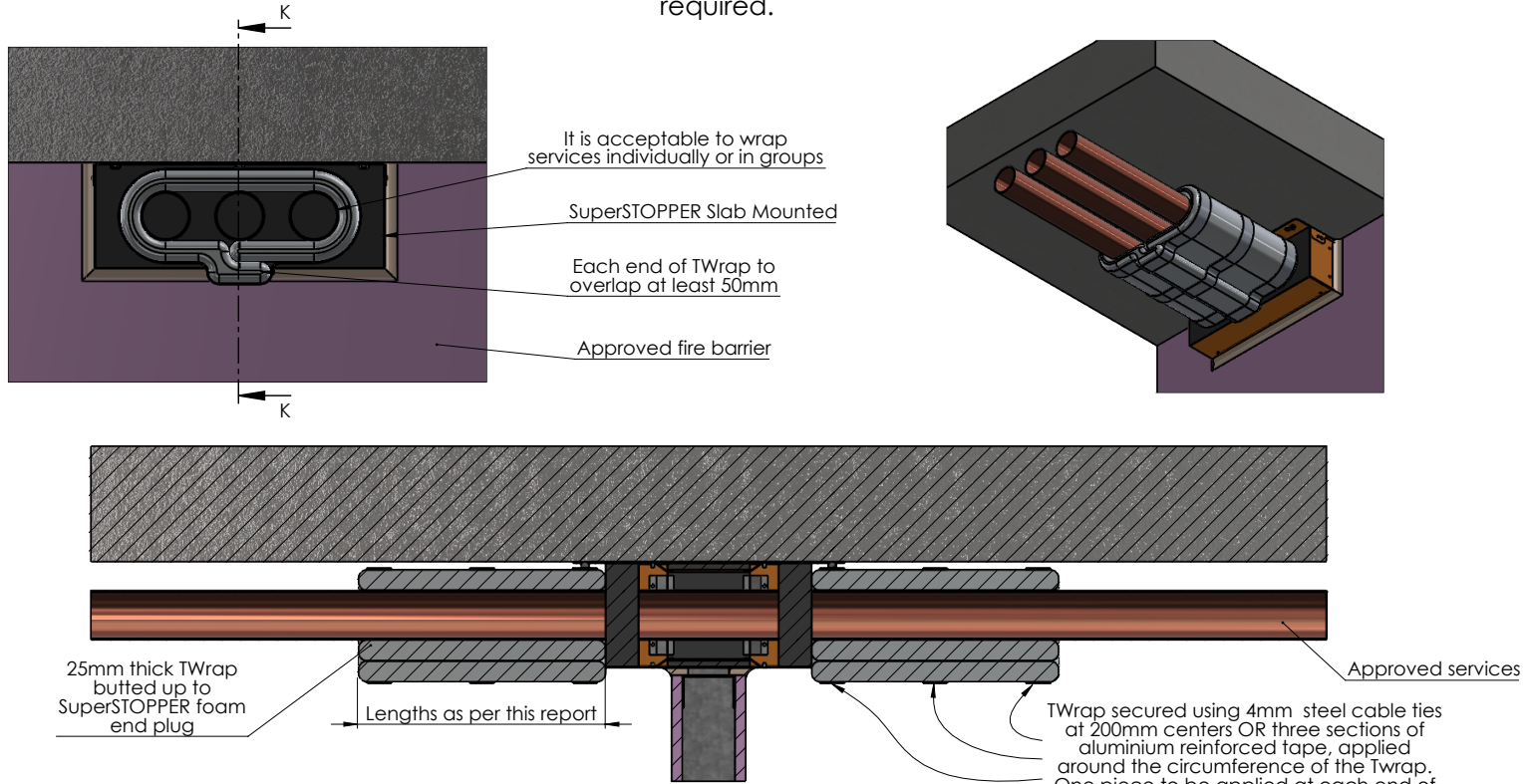
NOTE: ALL DIMENSIONS ARE IN MILLIMETRES (mm)

Trafalgar Head Office:
 PO BOX 545
 Chester Hill NSW 2162
 T: 1800 888 714
 F: 1800 201 500
 E: info@tfire.com.au
 W: www.tfire.com.au


STANDARD DRAWING
 PROJECT DRAWING

TWrap - Services Wrap

Where the SuperSTOPPER configuration doesn't achieve full insulation in a given fire barrier, TWrap can be applied to individual or groups of services in order to increase their insulation rating up to -/XXX/120, as required.

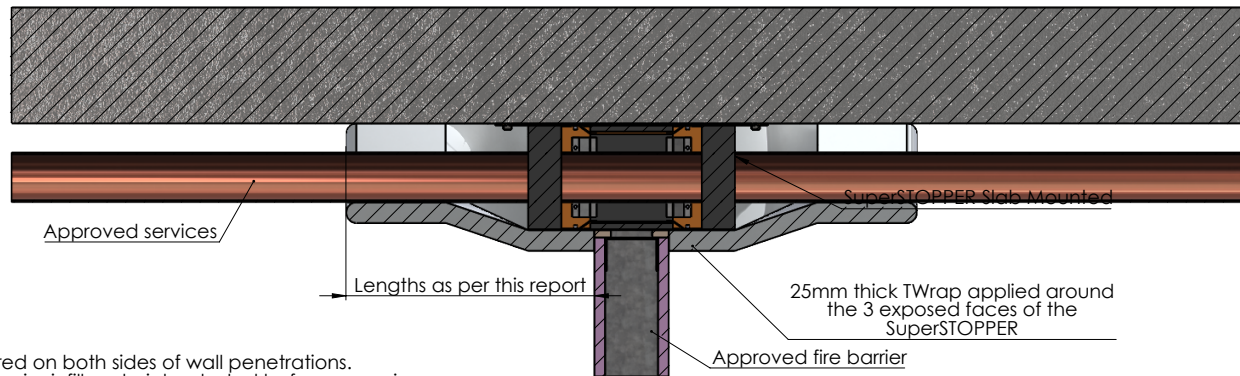
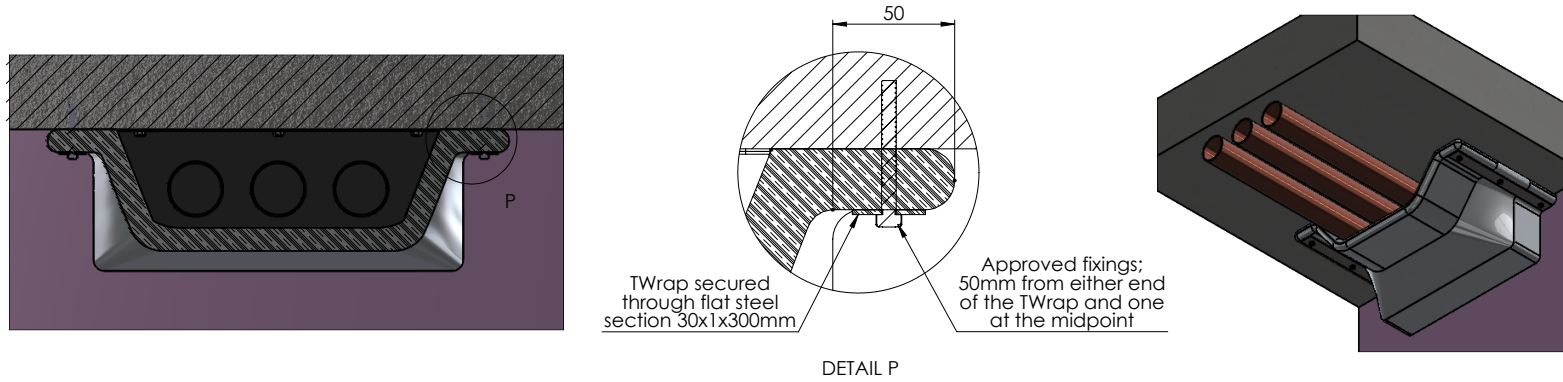


- NOTES:**
- TWrap is required on both sides of wall penetrations.
 - Cable trays require infill material as-tested before wrapping


Drawing Name: TWrap - Services Wrap				Test Standard: AS1530.4	Codes:	Revision:	Date:	No.:	NOTICE:
Project Title: SS - DWG SLABMOUNTS				Fire resistance level:	Drawn By: JC	<small>NOTE: ALL DIMENSIONS ARE IN MILLIMETRES (mm)</small>  Trafalgar Head Office: PO BOX 545 Chester Hill NSW 2162 T: 1800 888 714 F: 1800 201 500 E: info@tfire.com.au W: www.tfire.com.au			
Drawing No. : 15	Sheet: 15 of 21	Date: 20/05/2024	Scale: NTS	Based on Report No.:	Checked By: CT				

TWrap - 3-Sided Wrap

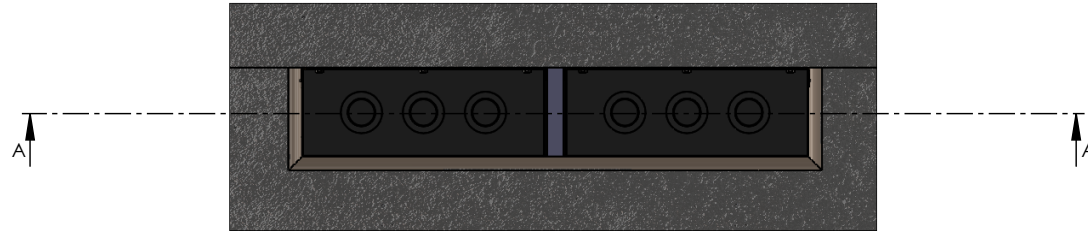
Where the SuperSTOPPER configuration does not achieve full insulation in a given fire barrier, TWrap will need to be applied to the SuperSTOPPER casing and services in order to increase their insulation rating up to -/XXX/120.



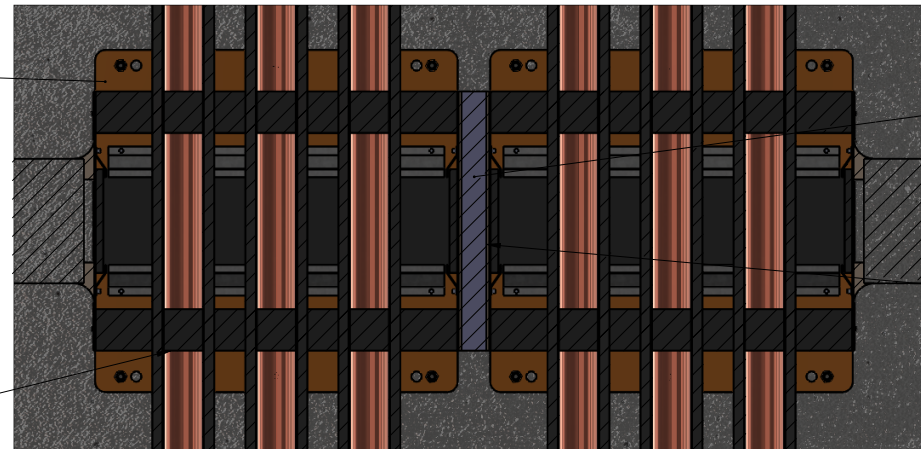
- NOTES:**
- TWrap is required on both sides of wall penetrations.
 - Cable trays require infill material as-tested before wrapping

Drawing Name: TWrap - 3-Sided Wrap				Test Standard: AS1530.4	Codes:	Revision:	Date:	No.:	NOTICE:
Project Title: SS - DWG SLABMOUNTS				Fire resistance level:	Drawn By: JC				<small>NOTE: ALL DIMENSIONS ARE IN MILLIMETRES (mm)</small>  Trafalgar Head Office: PO BOX 545 Chester Hill NSW 2162 T: 1800 888 714 F: 1800 201 500 E: info@tfire.com.au W: www.tfire.com.au
Drawing No. : 16	Sheet: 16 of 21	Date: 20/05/2024	Scale: NTS	Based on Report No.:	Checked By: CT	<input type="checkbox"/> STANDARD DRAWING <input type="checkbox"/> PROJECT DRAWING			

Stacked - Horizontal




SuperSTOPPER SlabMounts stacked side by side, separated by section of 30mm Maxilite



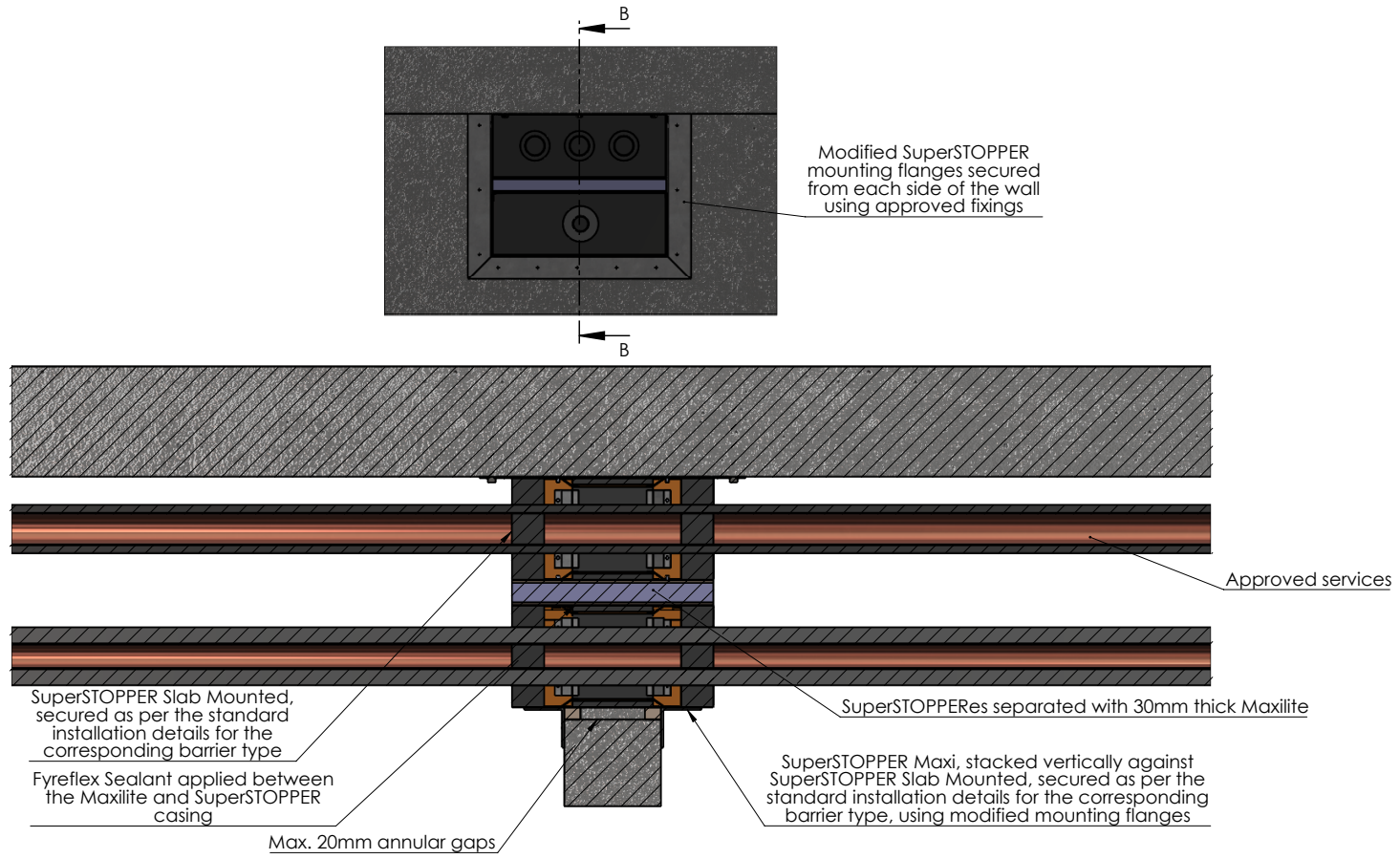
30mm Maxilite board


Fyreflex Sealant applied between the Maxilite and SuperSTOPPER casing

Aside from the Maxilite stacking detail, the SuperSTOPPER SlabMounts are to be installed as per the standard details for the corresponding barrier type

Drawing Name: Stacked - Horizontal				Test Standard: AS1530.4	Codes:	Revision:	Date:	No.:	NOTICE:
Project Title: SS - DWG SLABMOUNTS				Fire resistance level:	Drawn By: JC				<small>NOTE: ALL DIMENSIONS ARE IN MILLIMETRES (mm)</small>  Trafalgar Head Office: PO BOX 545 Chester Hill NSW 2162 T: 1800 888 714 F: 1800 201 500 E: info@tfire.com.au W: www.tfire.com.au
Drawing No. : 17	Sheet: 17 of 21	Date: 20/05/2024	Scale: NTS	Based on Report No.:	Checked By: CT	<input type="checkbox"/> STANDARD DRAWING <input type="checkbox"/> PROJECT DRAWING			

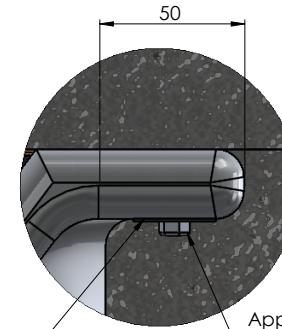
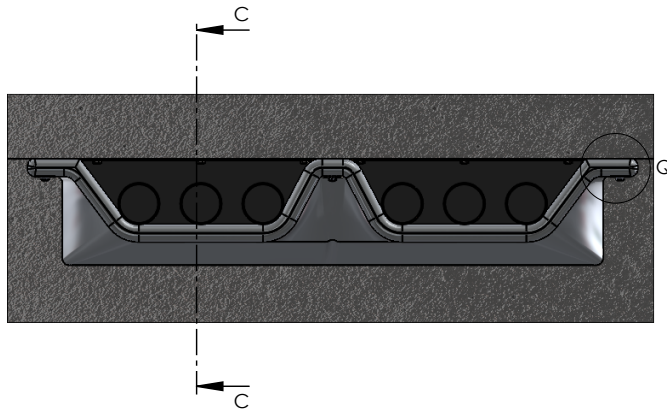
Stacked - Vertical



Drawing Name: Stacked - Vertical				Test Standard: AS1530.4	Codes:	Revision:	Date:	No.:	NOTICE:
Project Title: SS - DWG SLABMOUNTS				Fire resistance level:	Drawn By: JC				<small>NOTE: ALL DIMENSIONS ARE IN MILLIMETRES (mm)</small>  Trafalgar Head Office: PO BOX 545 Chester Hill NSW 2162 T: 1800 888 714 F: 1800 201 500 E: info@tfire.com.au W: www.tfire.com.au
Drawing No. : 18	Sheet: 18 of 21	Date: 20/05/2024	Scale: NTS	Based on Report No.:	Checked By: CT	<input type="checkbox"/> STANDARD DRAWING <input type="checkbox"/> PROJECT DRAWING			

TWrap - Stacked (Horizontal)

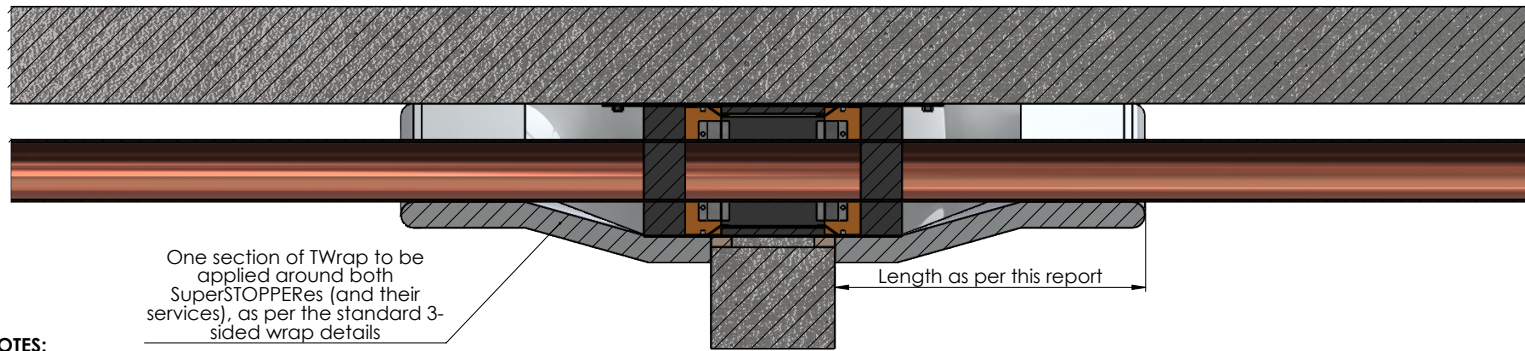
- TWrap detail required on each side of wall penetrations and top side of floors



TWrap secured through flat steel section 30x1x300mm

Approved fixings; 50mm from either end of the TWrap and one at the midpoint

DETAIL Q



One section of TWrap to be applied around both SuperSTOPPERes (and their services), as per the standard 3-sided wrap details

Length as per this report

NOTES:

- TWrap is required on both sides of wall penetrations.
- Cable trays require infill material as-tested before wrapping

Drawing Name: Stacked (Horizontal) - TWrap

Test Standard:
AS1530.4

Codes:

Revision:

Date:

No.:

NOTICE:

Project Title: SS - DWG SLABMOUNTS

Fire resistance level:

Drawn By:
JC

NOTE: ALL DIMENSIONS ARE IN MILLIMETRES (mm)

Drawing No. :
19

Sheet:
19 of 21

Date:
20/05/2024

Scale:
NTS

Based on Report No.:

Checked By:
CT

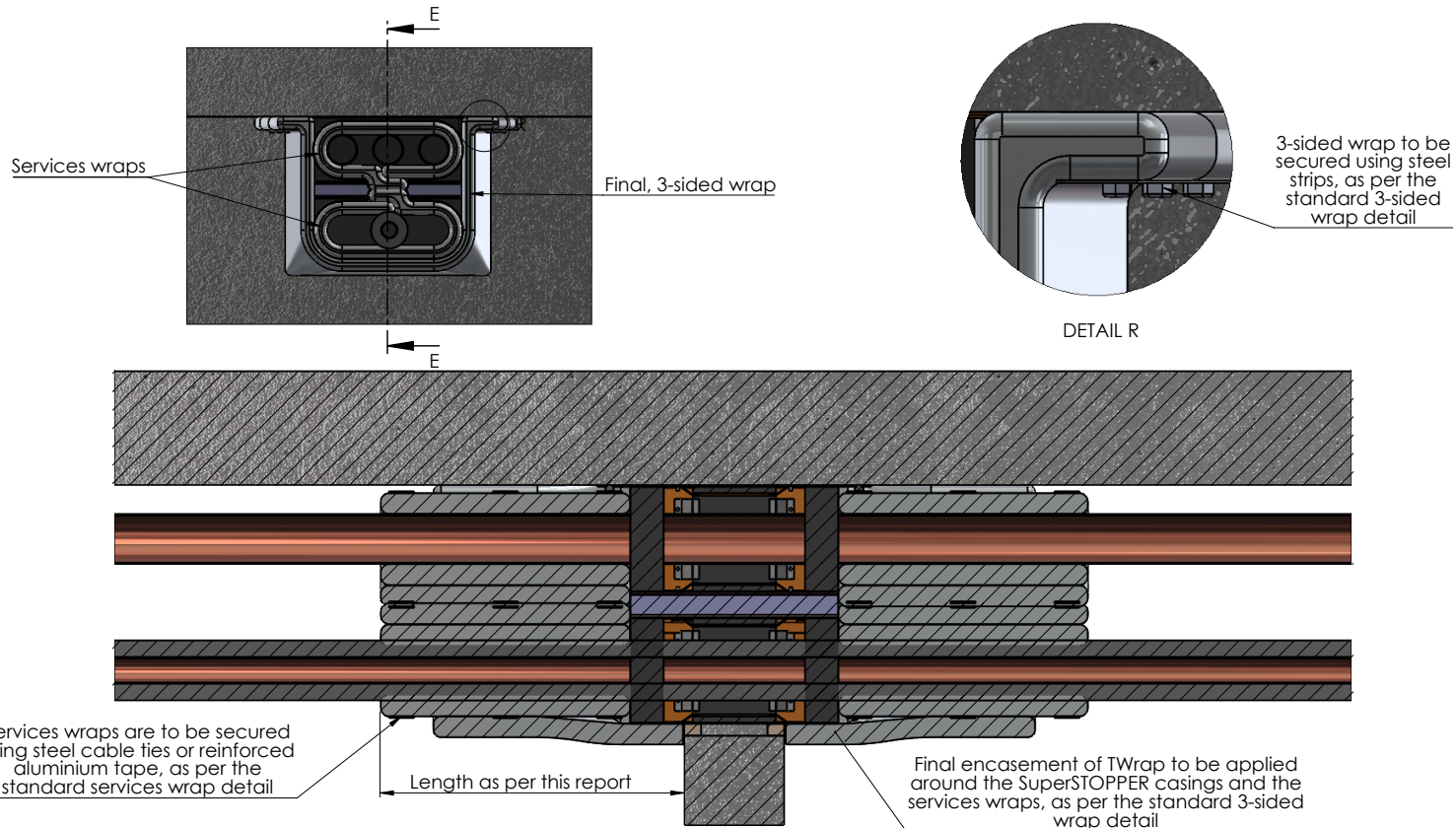
- STANDARD DRAWING
 PROJECT DRAWING



Trafalgar Head Office:
PO BOX 545
Chester Hill NSW 2162
T: 1800 888 714
F: 1800 201 500
E: info@tfire.com.au
W: www.tfire.com.au


TWrap - Stacked (Vertical)

- TWrap detail required on each side of wall penetrations



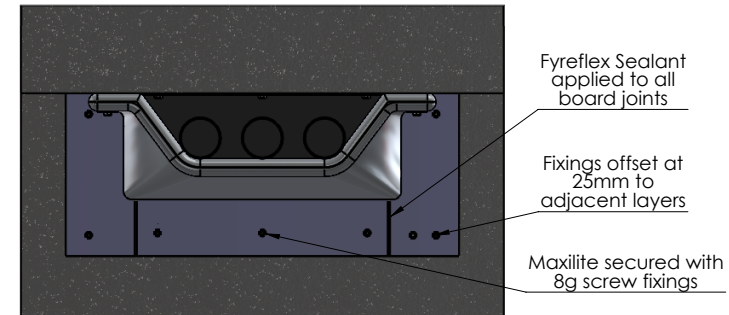
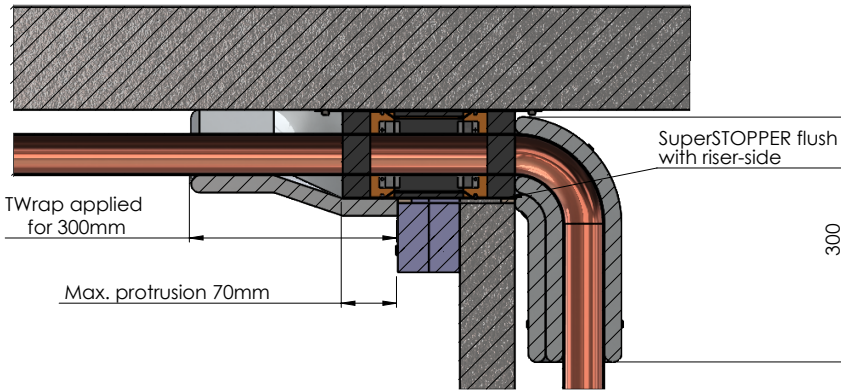
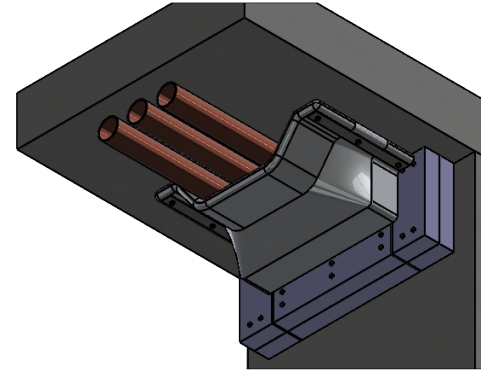
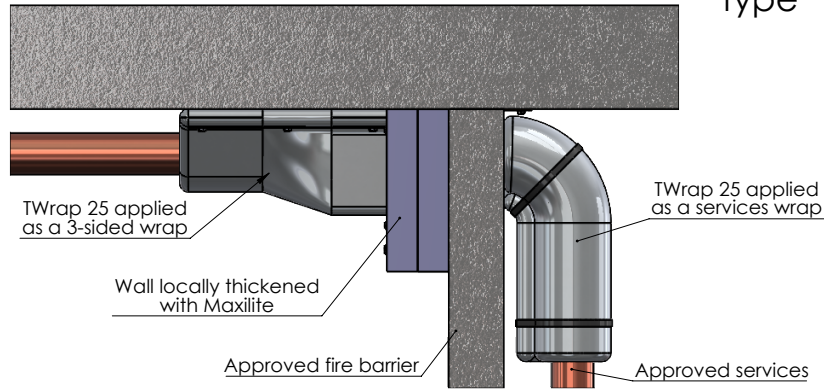
NOTES:

- TWrap is required on both sides of wall penetrations.
- Cable trays require infill material as-tested before wrapping


Drawing Name: Stacked (Vertical) - TWrap				Test Standard: AS1530.4	Codes:	Revision:	Date:	No.:	NOTICE:
Project Title: SS - DWG SLABMOUNTS				Fire resistance level:	Drawn By: JC	<small>NOTE: ALL DIMENSIONS ARE IN MILLIMETRES (mm)</small>  Trafalgar Head Office: PO BOX 545 Chester Hill NSW 2162 T: 1800 888 714 F: 1800 201 500 E: info@tfire.com.au W: www.tfire.com.au			
Drawing No. : 20	Sheet: 20 of 21	Date: 20/05/2024	Scale: NTS	Based on Report No.:	Checked By: CT				

Riser Shaft Detail - SuperSTOPPER Slab Mounted installed with access from one side

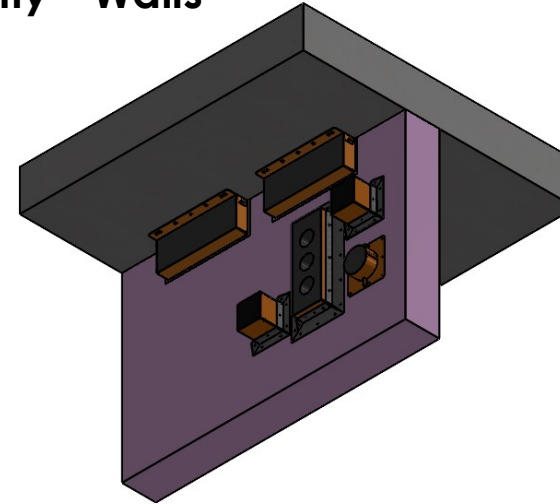
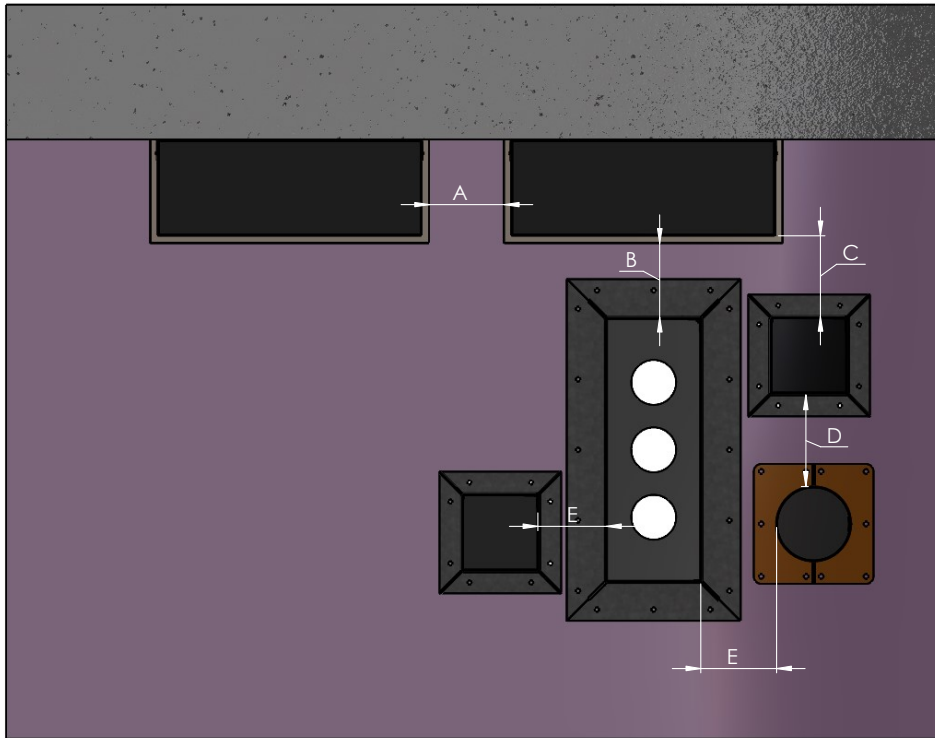
SuperSTOPPER Slab Mounted to be installed, offset from the thickness of the fire barrier, as per the standard details for the corresponding barrier type



NOTES:
• Cable trays require infill material as-tested before wrapping

Drawing Name: Riser Shaft Detail				Test Standard: AS1530.4	Codes:	Revision:	Date:	No.:	NOTICE:
Project Title: SS - DWG SLABMOUNTS				Fire resistance level:	Drawn By: JC	<small>NOTE: ALL DIMENSIONS ARE IN MILLIMETRES (mm)</small>  Trafalgar Head Office: PO BOX 545 Chester Hill NSW 2162 T: 1800 888 714 F: 1800 201 500 E: info@tfire.com.au W: www.tfire.com.au			
Drawing No. : 21	Sheet: 21 of 21	Date: 20/05/2024	Scale: NTS	Based on Report No.:	Checked By: CT				

SuperSTOPPER In Close Proximity - Walls



Key	SuperSTOPPER Configuration	Minimum Separation Requirement (between holes in wall)
A	SlabMount to SlabMount	200mm of barrier between openings
B	SlabMount to Maxi	100mm of barrier between openings
C	SlabMount to Mini	100mm of barrier between openings
D	Mini to Mini OR Maxi to Maxi	100mm of barrier between openings
E	Mini to Maxi	100mm of barrier between openings

NOTES:

- Barrier must be designed or approved for the openings/spacing required.
- Double-Stacking Maxi/Slab-Mount boxes allows closer penetrations.
- For separation distances between non-Superstopper penetrations contact Trafalgar PRIOR to installation.

Drawing Name: Penetration Separation - Walls

Test Standard:
AS1530.4

Codes:

Revision:

Date:

No.:

NOTICE:

Project Title: SuperSTOPPER Install Variations

Fire resistance level:

Drawn By:
JC

NOTE: ALL DIMENSIONS ARE IN MILLIMETRES (mm)

Drawing No. :
3

Sheet:
3 of 9

Date:
14/05/2024

Scale:
NTS

Based on Report No.:

Checked By:
CT

STANDARD DRAWING
 PROJECT DRAWING

Trafalgar Head Office:
PO BOX 545
Chester Hill NSW 2162
T: 1800 888 714
F: 1800 201 500
E: info@tfire.com.au
W: www.tfire.com.au