

SPEEDPANEL®
Systems



Speedpanel® is a clever panel wall system comprised of a lightweight core and a reinforcing steel shell that is very quick to install. AS1530.4 requires fire-stopping penetration systems to be fire-tested and/or assessed to determine the FRL of the specific penetration in different wall types. The Trafalgar Fire systems in this datasheet have been tested and approved specifically for use in Speedpanel® wall systems, providing compliance under the National Construction Code (NCC).



PRODUCTS



- FyreBATT
- FyreBOX™ Range
- FyreCHOKE Collars
- FyreFLEX® Sealant
- FyrePEX HP Sealant & FyreSHEATH
- FyrePLUG® Pillows
- FyreSHIELD™ Access Panel
- TWRAP™

APPLICATIONS



Electricians	Power Cables Data cables PVC Conduits
HVAC&R	Insulated pipes
Plumbers	Copper and Steel pipes PEX pipes PEX-AL-PEX pipes PVC pipes
Fire Professionals	Steel and CPVC Sprinkler pipes Fire Cables

TRADES

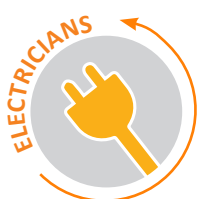


TABLE OF CONTENTS

Click
page title to go to
Page

Section	Trade/s	Page
Compliance		3
FRL Tables	Fyre Sealant Range	4
	FyreBOX™ Range	5
	FyreSHIELD™ Access Panel	6
	FyreCHOKE Conduit & Premium Hinged Retrofit	7
	FyrePLUG® Pillows	7
	FyreBATT	8
Product Overviews	FyreFLEX® Sealant	9
	FyrePEX™ HP Sealant	10
	FyreBOX™ Mini	11
	FyreBOX™ Maxi	12
	FyreBOX™ Slab-Mount	13
	FyreSHIELD™ Access Panel	14
	FyreCHOKE Conduit Collars	15
	FyreCHOKE Premium Hinged Retrofit Collars	16
	FyrePLUG® Pillows	17
	FyreBATT	18
	TWRAP™	19

SPEEDPANEL® SYSTEMS



COMPLIANCE WITH THE NATIONAL CONSTRUCTION CODE (NCC)

Formerly known as BCA

Fire Rated Speedpanel® wall systems are very popular in the Australian building industry due to the reduction in overall wall thickness, speed of construction and their acoustic and fire-resistant properties.

Trafalgar Fire is committed to innovation within the passive fire industry and as such have been developing new products and re-testing existing technologies, specifically designed to maintain the fire resistance level (FRL) of service penetrations through Speedpanel® wall systems.

Speedpanel® is a proprietary panel system with a lightweight core with a reinforced steel shell, and AS1530.4 does not include and permissible variations that apply to penetrations in these walls. This means that service penetrations should be fire-tested specifically in Speedpanel® to determine the FRL, and assessments based on other wall types do NOT comply with Schedule 5 of the National Construction Code (NCC).





The Trafalgar Fire systems in this document have been fire tested to AS1530.4-2014 and are approved specifically for use in Speedpanel® wall systems, providing full compliance with the NCC.



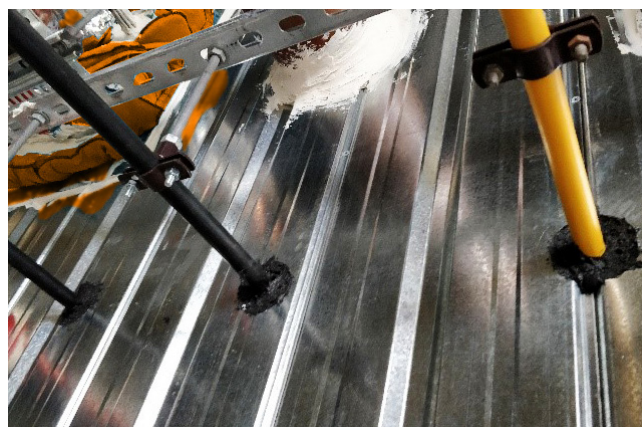
FYRE SEALANTS RANGE

FyreFLEX® SEALANT & FyrePEX HP INTUMESCENT SEALANT



Applications	Trade	System	Details	FRL
Small Cable Bundles		FyreFLEX® Sealant	For specific system and FRL details refer to the: FyreFLEX for Electricians Technical Manual	-120/120
Large Cable Bundles			FyreFLEX for Plumbers Technical Manual	-/120/120
Cable Trays			TWRAP Technical Manual	-/120/120
Steel Pipes		FyreFLEX® Sealant FyreBOARD Maxilite® TWRAP	Available from the Trafalgar Fire Knowledge Centre Technical Manuals page on the website.	-120/120
Copper Pipes				-/120/120
PEX Pipes				-/120/120
Air-conditioning bundle (FR or PE insulation)		FyrePEX HP Sealant	FyrePEX HP Technical Manual	-/120/120
Insulated Metal Pipes up to 32mm			TWRAP Technical Manual	-/120/120
PVC Conduits			Available from the Trafalgar Fire Knowledge Centre Technical Manuals page on the website.	-/120/120



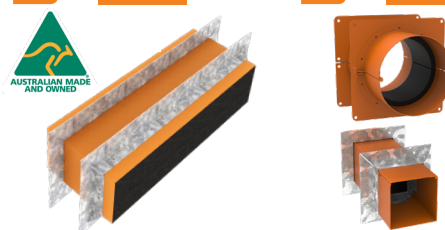
FyreBOX™ RANGE




FyreBOX™ Slab-Mount, FyreBOX™ Maxi & FyreBOX™ Mini Mixed service penetrations

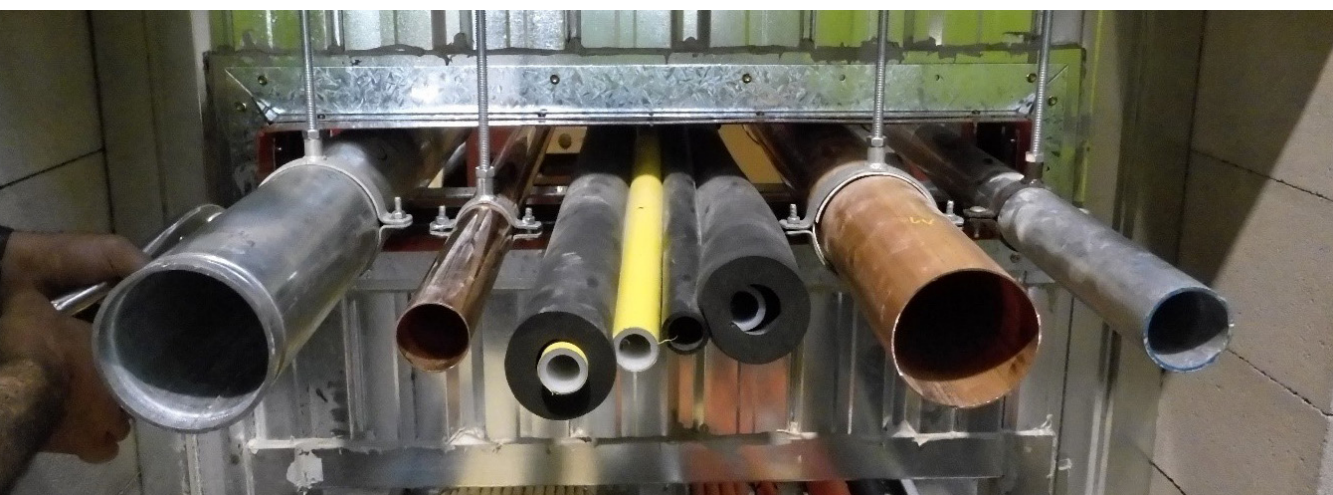
FyreBOX™ SLAB-MOUNT



FyreBOX™ MAXI FyreBOX™ MINI

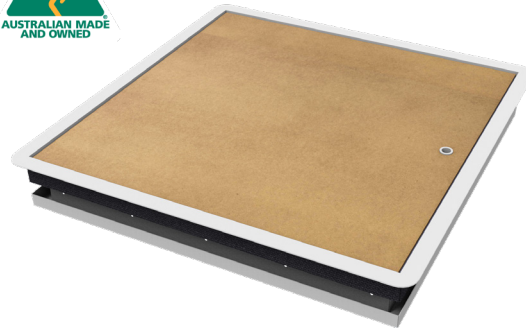


Applications	Trade	System	Details	FRL
Small services including: <ul style="list-style-type: none"> Electrical and Data Cables PVC Conduit PEX Gas PEX Pipes Insulated Pair Coil 	   	FyreBOX™ Mini Square sizes: <ul style="list-style-type: none"> 65mm 100mm Round sizes: <ul style="list-style-type: none"> 100mm 150mm 	The FyreBOX™ Range provides a unique level of flexibility as they allow for multiple and mixed service penetrations in one small footprint. For specific system and FRL details refer to the: FyreBOX™ Maxi and Mini Technical Manual FyreBOX™ Slab-Mount Technical Manual Available from the Trafalgar Fire Knowledge Centre Technical Manuals page on the website.	-/120/120
Large service bundles including large quantities of: <ul style="list-style-type: none"> Insulated/Bare Copper or Steel Pipes Cable Trays and Conduits 		FyreBOX™ Maxi (wall mounted) or FyreBOX™ Slab-Mount (head of wall system) Available Sizes: <ul style="list-style-type: none"> 160 x 125mm (Slab-Mount Only) 350 x 125mm 550 x 125mm 650 x 125mm Custom up to 1100 x 125mm 		-/120/120



FyreSHIELD™

2 WAY TESTED FIRE RATED ACCESS PANEL



Applications	Trade	System	Details	FRL*
Access Panels	 	FyreSHIELD™ Sizes: <ul style="list-style-type: none">• 300 x 300mm• 400 x 400mm• 450 x 450mm• 550 x 550mm• 600 x 600mm• Custom any size up to 600 x 600mm	Providing market leading FRL's for access panels, the FyreSHIELD™ uses new materials technology so it doesn't need any additional blocks or architraves to achieve the 30 minutes insulation as per NCC C3.13. For specific system and FRL details refer to the: FyreSHIELD™ Technical Manual Available from the Trafalgar Fire Knowledge Centre Technical Manuals page on the website	-/120/30

* Shaft walls only require 30 minutes insulation as per NCC C3.13



FyreSHIELD
Fully Insulated
2-Way Fire Protection




Patent Pending

FyreCHOKE PREMIUM HINGED RETROFIT

FIRE COLLARS

FyreCHOKE PREMIUM HINGED RETROFIT

FyreCHOKE CONDUIT


Applications	Trade	System	Details	FRL
PVC Conduits		FyreCHOKE Conduit or FyreCHOKE Premium Hinged Retrofit (with Fyre-BOARD Maxilite®)	For specific system and FRL details refer to the:	-120/120
PVC Pipes			FyreCHOKE Technical Manual	-/120/120
PEX pipes			Available from the Trafalgar Fire Knowledge Centre Technical Manuals page on the website	-/120/120
Air-conditioning bundle (FR or PE insulation)				-/120/120

FyrePLUG®

FIRE PILLOWS


FyrePLUG

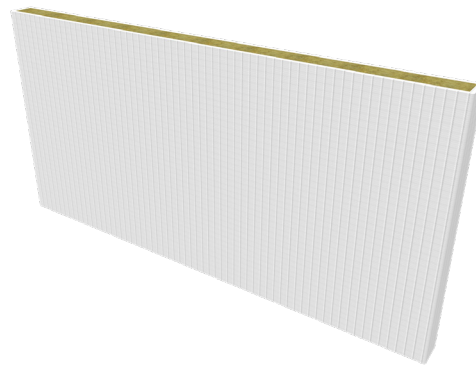
Applications	Trade	System	Details	FRL
Electrical and Data Cables		FyrePLUG® Pillows (with FyrePEX HP for conduits)	For specific system and FRL and TWRAP details refer to the:	-120/120
PVC Conduit			FyrePLUG® Technical Manual	-/120/120
Metal pipes			Available from the Trafalgar Fire Knowledge Centre Technical Manuals page on the website	-/120/120





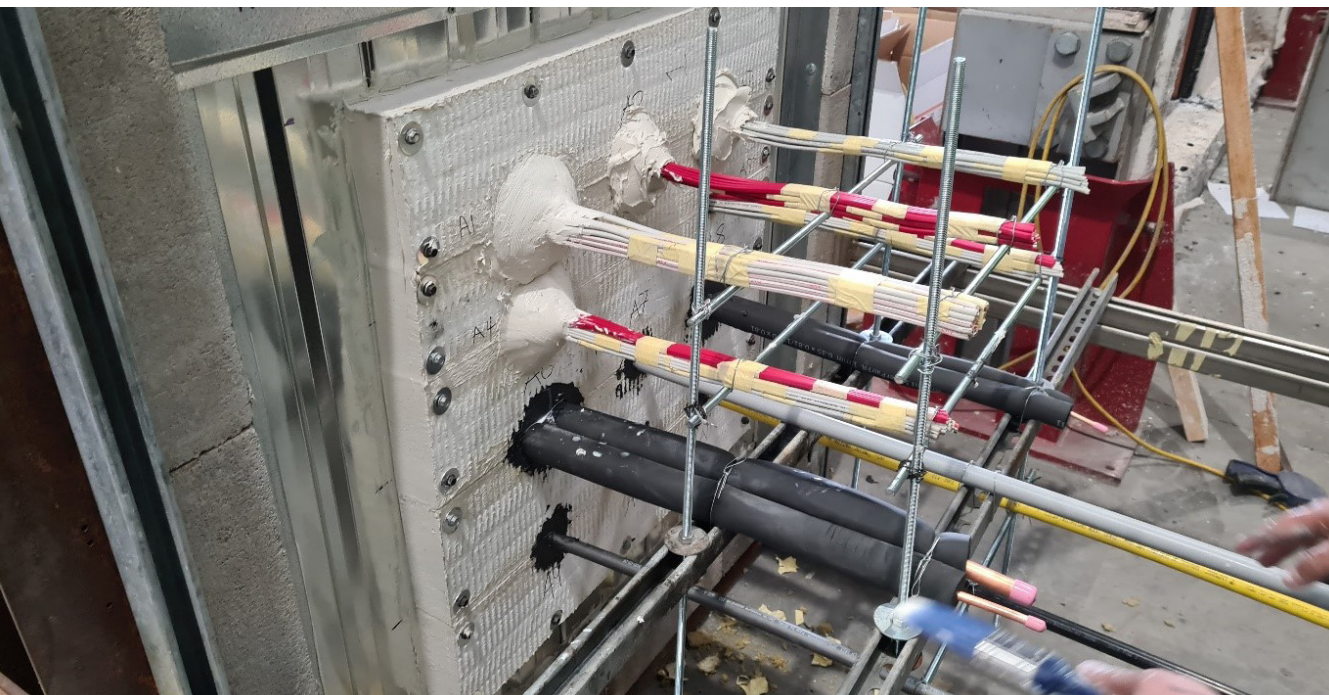


FyreBATT

HIGH DENSITY FIRE PROTECTION WITH ACOUSTIC AND SMOKE SEAL



Applications	Trade	System	Details	FRL
Small to large cable bundles and cable trays		FyreBATT with FyreFLEX®	Trafalgar Fire FyreBATT's have been tested and developed for 51mm up to 78mm thick Speedpanel walls for multiple service penetrations.	-120/120
PVC Conduits		FyreBATT with FyrePEX HP	For specific system and FRL details refer to the: FyreBATT Technical Manual	-/120/120
Air-conditioning bundle (FR or PE insulation)		FyreBATT with FyrePEX HP	Available from the Trafalgar Fire Knowledge Centre Technical Manuals page on the website	-/120/120



FyreFLEX® Sealant



Trafalgar Fire's FyreFLEX® Sealant is a water based, low VOC and environmentally friendly fire-rated sealant with intumescent properties which makes it perfect for fire stopping cable and metal pipe penetrations through fire rated barriers.

FyreFLEX® is the one of the most fire tested sealants in the market with more than 30 fire and acoustic tests, and assessments spanning over 30 years. FyreFLEX® has been approved for use in a large range of control joint or firestopping applications required under the National Construction Code (NCC).



KEY FEATURES



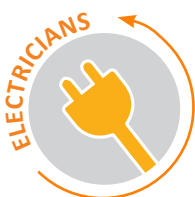
- NCC 2022 ready – fire tested and approved in accordance with AS1530.4 and AS4072.1
- Non-Toxic
- Water-based allowing for easy clean-up
- Excellent adhesion properties
- Tested and compliant in single layer plasterboard, Hebel® and Speedpanel® walls.
- Approved for use in both walls and floors

APPLICATIONS



Builders	Control and Expansion Joints
Electricians	Electrical Cables Data Cables
Active Fire	Steel Sprinkler Pipes TPS Fire Cables
Plumbers	Copper Pipes Steel Pipes

TRADES



FyrePEXTM HP



FyrePEXTM High-Performance Sealant is a graphite water-based intumescent mastic sealant that is used for fire stopping of service penetrations through fire-rated walls and floors to prevent the spread of fire for up to 2 hours.

Click to Watch
Installation Video



KEY FEATURES



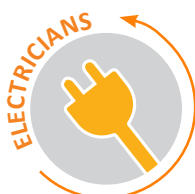
- Specifically designed for water and gas PEX pipe penetrations
- Also suitable for HVAC&R services
- Quick and easy to apply and install
- FyreSHEATH option helps reduce wastage
- Tested for SpeedPanel, Hebel and plasterboard walls
- Non-toxic & Green star rated for low VOC
- Water based for easy clean up
- Tested and approved in accordance with AS1530.4-2014 and AS4072.1

APPLICATIONS



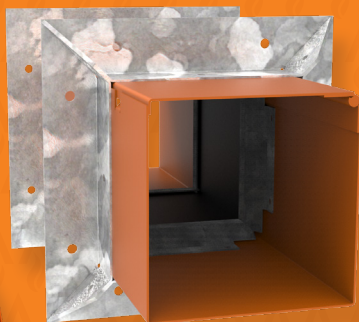
Plumbers	PEX pipes PEX-AL-PEX pipes Insulated Steel Copper
HVAC&R	Pair coil (single or in clusters of 3)
Electricians	Power Data cables Conduits

TRADES



FyreBOX[™]

Mini



The FyreBOX[™] Mini and Maxi are a retro-fit multi-service penetration system designed to prevent the spread of fire through small or large service penetrations, in the smallest footprint possible. FyreBOX[™] has been tested rigorously with a range of mixed service types and bundles in common wall and floor types and is one of the most fire tested products in the world, with industry leading FRL's of up to -/240/240 (system specific).



Click to Watch
Installation Video



KEY FEATURES

**NEW IMPROVED
FYREFLANGE**

- Allows multiple and mixed services to pass through one opening
- Mixed services approved in any quantity or configuration
- Retro-fit or new construction
- Space saving, eliminates the need for 200mm separation between adjacent services
- Tested in Hebel®, single/ double layer plasterboard, Speedpanel® and many other common wall/floor systems.
- Fire tested in independent laboratories
- Thoroughly tested to AS1530.4-2014

APPLICATIONS

Electricians	Power Data cables Conduits
Plumbers	Steel and Copper pipes PVC pipes PEX pipes PEX-AL-PEX pipes
HVAC&R	Insulated pipes
Active Fire	Sprinkler pipes Fire cables

TRADES



FyreBOX[™] Maxi



The FyreBOX[™] Mini and Maxi are a retro-fit multi-service penetration system designed to prevent the spread of fire through small or large service penetrations, in the smallest footprint possible. FyreBOX[™] has been tested rigorously with a range of mixed service types and bundles in common wall and floor types and is one of the most fire tested products in the world, with industry leading FRL's of up to -/240/240 (system specific).



Click to Watch
Installation Video



KEY FEATURES



- Allows multiple and mixed services to pass through one opening
- Mixed services approved in any quantity or configuration
- Retro-fit or new construction
- Space saving, eliminates the need for 200mm separation between adjacent services
- Tested in Hebel®, single/ double layer plasterboard, Speedpanel® and many other common wall/floor systems.
- Fire tested in independent laboratories
- Thoroughly tested to AS1530.4-2014

APPLICATIONS



Electricians

Power
Data cables
Conduits

Plumbers

Steel and Copper pipes
PVC pipes
PEX pipes
PEX-AL-PEX pipes

HVAC&R

Insulated pipes

Active Fire

Sprinkler pipes
Fire cables

TRADES



BUILDERS



ELECTRICIANS



PLUMBERS



PASSIVE FIRE PROFESSIONALS



HVAC&R



ARCHITECT



FyreBOX™

Slab-Mount



The FyreBOX™ Slab-Mount is a proudly Australian made passive fire penetration system used for multiple and mixed service penetrations which has been designed and tested to be built into residential/commercial apartment walls and riser shafts reducing the space required for service penetrations, providing predictable site costs and a reliable method of fire stopping.



**BIM MODELS
NOW AVAILABLE**
CLICK HERE

Click to Watch
Installation Video



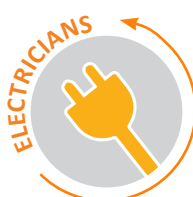
KEY FEATURES

- Allows firestopping to be installed before the walls are constructed
- Patented system allows multiple and mixed services to pass through one opening in any quantity or configuration
- Space saving, eliminates the need for 200mm separation between adjacent services
- Tested in Hebel® and single layer plasterboard walls
- Fire tested in independent laboratories
- Acoustic performance Rw50
- Thoroughly tested to AS1530.4-2014

APPLICATIONS

Electricians	Power Data cables Conduits
Plumbers	PEX pipes PEX-AL-PEX pipes
HVAC&R	Insulated pipes
Active Fire	Sprinkler pipes Fire cables

TRADES



FyreSHIELD™



FyreSHIELD™ is a proudly Australian made access panel system which has been designed and tested to be built into partition walls and riser shafts.

With improved fire and acoustic performance while maintaining the signature Trafalgar Australian-made quality, the FyreSHIELD™ is the only access panel worth specifying and installing!



KEY FEATURES



- Fully fire tested -/90/60 FRL's in accordance with AS1530.4:2014
- Two way fire protection
- Fire tested in a range of common wall types and shafts
- No calcium silicate blocks required
- Australian made quality
- Fully concealed hinges
- Budget lock as standard

APPLICATIONS



- 60 minute walls (-/60/60 FRL)
- 90 minute shafts (-/90/30 FRL)
- Hebel
- Speedpanel
- Plasterboard
- Pronto Panel
- Concrete/Masonry

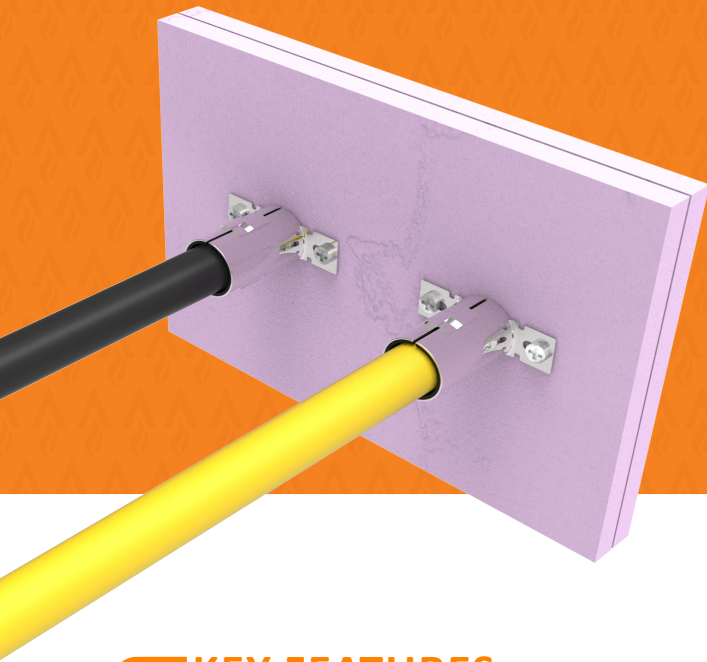
Full details in the manual

TRADES



FyreCHOKE

Conduit Collars



Trafalgar Fire FyreCHOKE Conduit Collars are designed to provide maximum protection against the spread of fire through walls and floors that are penetrated by plastic conduits, plastic pipes. FyreCHOKE Collars are simple to install, simply retro-fit around the service and fix to the wall or floor.



Click to Watch
Installation Video



KEY FEATURES



- Intumescent fire stopping specifically for plastic pipes and conduit penetrations.
- Actively expands during fire conditions, forms a tight seal and prevents the spread of fire through the service penetration.
- Fire tested in a range of wall and floor systems including a wide variety of service types.
- Stainless steel construction
- Simple design allows for quick and easy installation of the collars.
- Sizes 25-40mm



APPLICATIONS

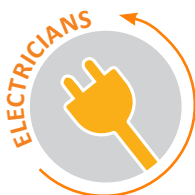
Electricians

Data NBN Conduits
Electrical Conduits

Plumbers

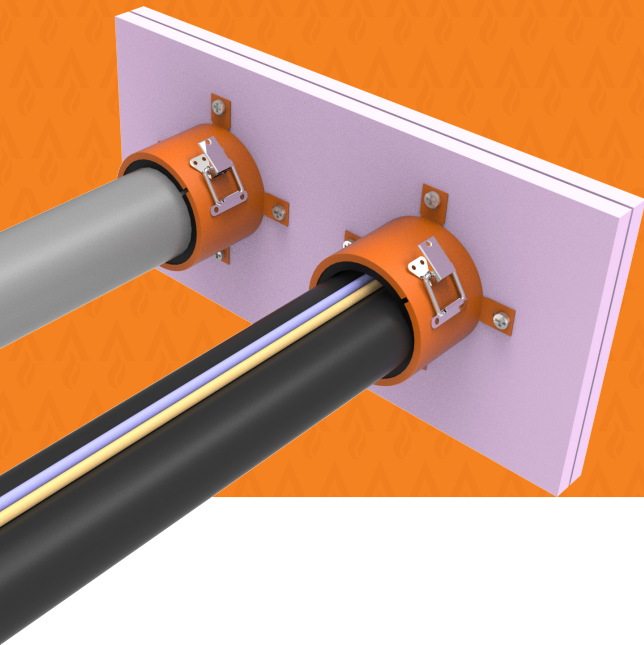
PVC pipes
PEX pipes
PEX-AL-PEX pipes

TRADES



FyreCHOKE

Premium Hinged Retrofit Collars



Trafalgar Fire FyreCHOKE Premium Hinged Retrofit Collars are designed to provide maximum protection against the spread of fire through walls and floors that are penetrated by plastic conduits, plastic pipes or air-conditioning service bundles. FyreCHOKE Collars are simple to install, simply retro-fit around the service and fix to the wall or floor.



Click to Watch
Installation Video



KEY FEATURES



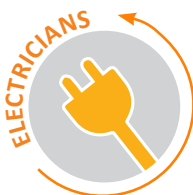
- Intumescent fire stopping for plastic pipes, conduits and air-conditioning bundle penetrations.
- Actively expands during fire conditions, forms a tight seal and prevents the spread of fire through the service penetration.
- Fire tested in a range of wall and floor systems and a wide variety of service types.
- Solid hinge and clasp with durable powder coated finish.
- Simple design allows for quick and easy installation of the collars.
- Sizes from 50-150mm



APPLICATIONS

Electricians	Data NBN Conduits Electrical Conduits
Plumbers	HDPE pipes PVC pipes PEX pipes PEX-AL-PEX pipes
HVAC&R	HVAC bundle Insulated pipes & cables

TRADES





FyrePLUG®

Fire Rated Pillow

Trafalgar Fire FyrePLUG® pillows are a tried and tested passive fire penetration system that have been used across the industry for over forty years and are Made in Australia.



**NEW ORANGE
COLOUR**
PREVIOUSLY BLUE



Online
Calculator
Click Here

KEY FEATURES



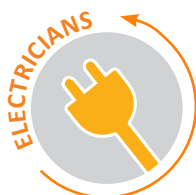
- Proudly Australian made
- Quick and easy installation
- Used in floors and walls
- Tested to AS1530.4-2014
- Removable
- Suitable for cables and metal pipes
- Approved with Speedpanel® and Hebel® walls
- Tested with Trafalgar Fire TWRAP™ for increased insulation ratings small medium and large, to suit various applications

WHAT IS FyrePLUG®?



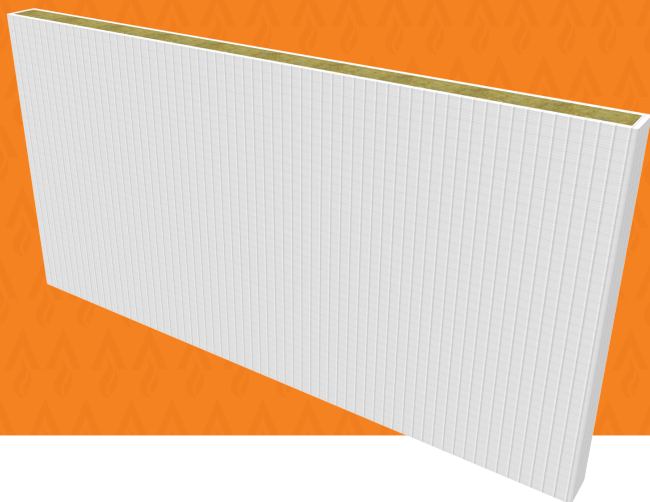
- Tested for a range of modern services and fire barriers to AS1530.4-2014
- Ideal for small to medium size penetrations for temporary fire stopping
- Undisturbed provide a permanent fire protection as required by the National Construction Code (NCC)
- Fire tested for wall and floor openings with other Trafalgar Fire systems and with an impressive range of service penetration types

TRADES



FyreBATT

Fire Rated Batt Systems



Trafalgar FyreBATT's are a coated mineral fibre product, designed for use as a fire seal for service penetrations. Consisting of a high-density fibrous lamella core, sealed on both sides with a flexible fire rated ablative coating, FyreBATT's offer a high fire protection, along with an effective smoke and acoustic seal.



KEY FEATURES



- Lightweight
- Simple to cut and install
- Friction-fit system
- Environmentally safe
- Suitable for small and larger openings
- For use in walls and floors
- Made in Germany by SVT

APPLICATIONS



Electricians	Power and Comms Bundles Cable Tray Conduits
Plumbers	Copper and Steel Pipes PEX Pipes PVC Pipes
HVAC&R	Pair coil bundles
Active Fire	Sprinkler pipes Fire cables

TRADES



TWRAP™

Fire Penetration Wrap



TWRAP™ is a 25mm thick foil-faced, fire protection wrap that has been engineered to provide insulation performance on service penetrations as required by the National Construction Code (NCC) and tested in accordance with AS1530.4-2014.



KEY FEATURES



- Simple fixing requirements
- Up to 3 hours fire insulation performance
- Suitable for cables, cable trays and metal pipes
- Fully encapsulated wrap system
- Bio-soluble fibres
- Easily identified on site for certification
- Easy to wrap around smaller services
- Allows for adds moves and changes during the life of the building
- Tested for use with a range of Trafalgar Fire's penetration systems

WHAT IS TWRAP™?



- 25mm thick foil-faced, fire protection wrap
- Used with penetration sealing systems
- Aluminium foil, fiberglass-reinforced outside layer completely encapsulates the core
- Strong - additional handling strength and tear resistance
- Resists mould growth
- Thoroughly tested to AS1530.4-2014

TRADES

