



MonoWRAP

MonoWRAP is a 40mm thick stonewool penetration wrap, foiled on one side for quick and cost-effective wrapping of service penetrations when used in conjunction with the Trafalgar FyreBATT, FyrePLUG Pillows, FyreSET Mortar and FyreFLEX Service penetrations.

KEY FEATURES



- Cost effective system for major projects
- Protects against heat rise through penetration systems
- Compatible with FyreFLEX, FyreBATT, FyrePLUG, FyreSET penetration systems
- For floors, topside installation only!
- Tested to AS1530.4-2014
- AS4072.1 compliant
- Foiled on one side
- High thermal performance (R-value)

APPLICATIONS



- Service penetrations sealed with Trafalgar Passive Fyre Systems, including:
 - **Metal pipes**
 - **Cables**
 - **Cable trays**
 - **Mixed service penetrations**
- Wall and floor penetrations

TRADES



SYSTEMS



FyreBATT

FyrePLUG

FyreSET

FyreFLEX

TABLE OF CONTENTS



	Page	
Benefits	3	
Specifications	4	
FRL Tables	Walls	5
	Floors	6
Installation	MonoWrap	7
	System Range	8

BENEFITS

WHAT IS THE PRODUCT?

MonoWRAP is a 40mm thick fire protection wrap that is tested for wrapping around service penetrations that are sealed with Trafalgar’s service penetration systems, to protect against heat transfer (AKA insulation performance) that may occur during fire conditions.

MonoWRAP is foiled on the outside layer around the stonewool core to provide additional handling strength.

Before wrapping the services with MonoWrap, the penetration in the fire barrier must first be sealed for fire integrity using Trafalgar’s range of FyreBATTs, FyrePLUG Pillows, FyreSET mortar (or in some cases just FyreFLEX sealant) which physically stop the fire. Where the services conduct heat through fire barrier (such as metal pipes and cables) MonoWRAP can be wrapped around the services to maintain the insulation rating of the wall or floor.

Combined, the system will provide FRL’s in excess of-/120/120 as required by the National Construction Code (NCC) and has been tested/approved in accordance with AS1530.4-2014.

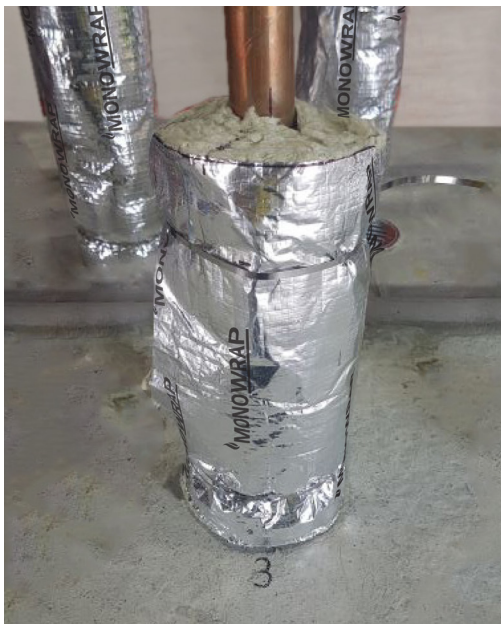
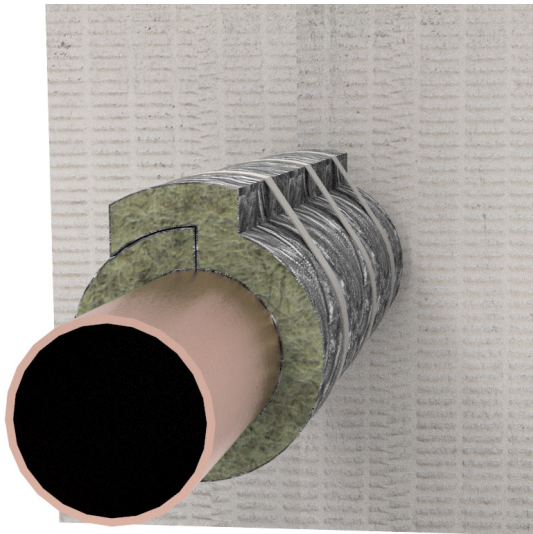
APPLICATIONS EXPANDED

MonoWrap is perfectly suited for use wherever fast, economical fire stopping is needed:

- No need for power tools
- Easy to cut and install
- Lightweight materials are easy to carry across site
- Large range of approved service penetrations (see below)

Where TWrap is our premium fully encapsulated, engineered wrap material, MonoWRAP can be substituted for TWrap in all FyreBATT, FyrePLUG, FyreSET Mortar and FyreFLEX systems that are approved under:

- MonoWrap and [FyrePLUG Pillows assessment FAS200048](#)
- MonoWrap and [FyreSET Mortar assessment FAS200424](#)
- MonoWrap and [FyreBATT assessment FAS210023](#)
- MonoWrap and [FyreFLEX sealant assessment FCO1579](#)



Click here to go back to Contents

SPECIFICATIONS



MonoWRAP

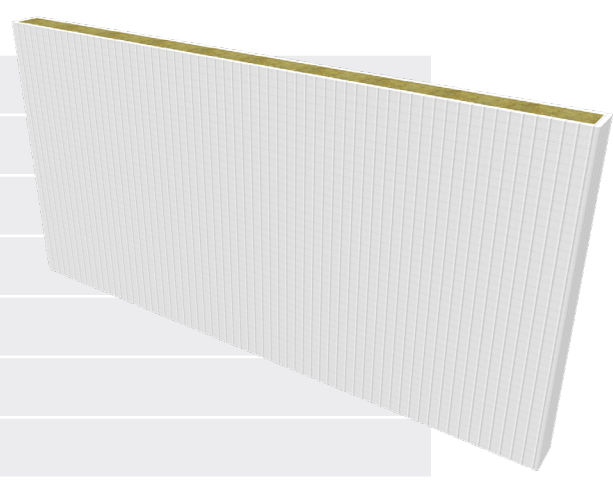


Thickness	40mm
Core	Stonewool
Facing	Aluminium foil, one side
Fire testing approval	AS1530.4-2014 and AS4072.1
Combustibility	Non-combustible
Roll size	600mm wide x 4000mm long

FyreBATT



Thickness	60mm
Size	1200x600mm
Density	160Kg/m3
Facing	Coated on both faces
Fire testing approval	AS1530.4-2014 and AS4072.1 refer to FAS 210023
Combustibility	AS1530.1 Non-combustible
Reaction to fire	AS1530.3 (0, 0, 0, 3)



MonoWRAP is also compatible with FyrePLUG pillows, FyreSET Mortar and FyreFLEX sealant penetrations.



FyreSET
CLICK HERE



FyrePLUG
CLICK HERE

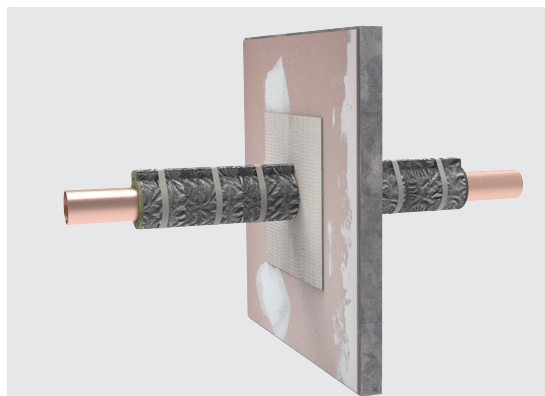


FyreFLEX
CLICK HERE

MonoWrap

Wall Approvals with FyreBATT

The following tables list the services that been tested with FyreBATT sealing the aperture, and MonoWRAP applied to the service. MonoWRAP to be wrapped on both sides of the penetration.



Service	Size (up to)	Batt fire stopping	Wrap length for -/90/90	Wrap length for -/120/120	
Copper pipes	50mm	FyreFLEX Sealant	300mm	300mm	
	100mm		600mm	600mm	
	150mm		1100mm & 300mm	1100mm & 300mm	
Steel pipes	100mm		300mm	600mm	
	150mm		450mm	600mm	
	300mm		1200mm	1200mm	
Cable trays (Appendix D1 & D2)	All copper core cables*		300mm	450mm	
Small cables	15x CAT6 or TPS or Firecables		Wrap Free	Wrap Free	
Insulated pipe (FR insulation up to 19mm thick)	3x pair coil 3/8 & 5/8" with cables		SuperSTOPPER® Circular	300mm	300mm
	1x 3/8 & 5/8" pair coil		FyrePEX HP Sealant	Wrap Free	Wrap Free

*As per AS1530.4-2014 section 10.12 permissible variations

Wall Systems tested with FyreBATT

The above system may be installed into:

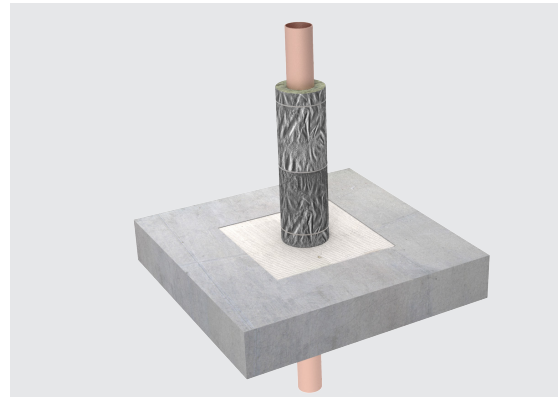
Wall	Minimum Specification	Batt thickness
Plasterboard – 90 minutes	1x16mm both sides of 64mm stud	1x 60mm or 2x 60mm
Plasterboard – 120 minutes	2x13mm both sides of 64mm stud	2x 60mm
Hebel/Walsc panel – 90 minutes	75mm AAC	2x 60mm
Concrete/Masonry – 120 minutes	116mm thickness	2x 60mm
Speedpanel 60 minutes	51mm panel thickness	2x 60mm
Speedpanel 90 minutes	64mm panel thickness	2x 60mm
Speedpanel 120 minutes	78mm panel thickness	2x 60mm

Approvals for MonoWRAP and FyreBATT are covered via report FAS 210023

MonoWrap

Floor Approvals with FyreBATT

The following tables list the services that been tested with FyreBATT sealing the aperture, and MonoWRAP applied to the service. MonoWRAP to be wrapped on both sides of the penetration.



Service	Size (up to)	Batt fire stopping	Wrap length for -/90/90	Wrap length for -/120/120
Copper pipes	50mm	FyreFLEX Sealant	450mm	450mm
	100mm		600mm	600mm
	150mm		Uniguard	1100mm+ 300mm (or Uniguard™)
Steel pipes	100mm		450mm	450mm
	150mm		600mm	600mm
Cable trays (Appendix D1 & D2)	All copper core cables*			300mm
Small cables	15x CAT6 or TPS or Firecables		Wrap free	Wrap free
Insulated pipe (FR insulation up to 19mm thick)	3x pair coil 3/8 & 5/8" with cables	SuperSTOPPER® Circular	300mm	300mm
	1x 3/8 & 5/8" pair coil	FyrePEX HP Sealant	Wrap Free	Wrap Free

*As per AS1530.4-2014 section 10.12 permissible variations

Floor Systems tested with FyreBATT

The above system may be installed into the following floor:

Floor	Minimum Specification	Batt thickness
Concrete 90 minutes (*Note-As a blank seal, penetrations coming soon)	150mm	1x 60mm
Concrete 120 minutes	120mm	2x60mm
Concrete 180-240 minutes	180mm	2x60mm

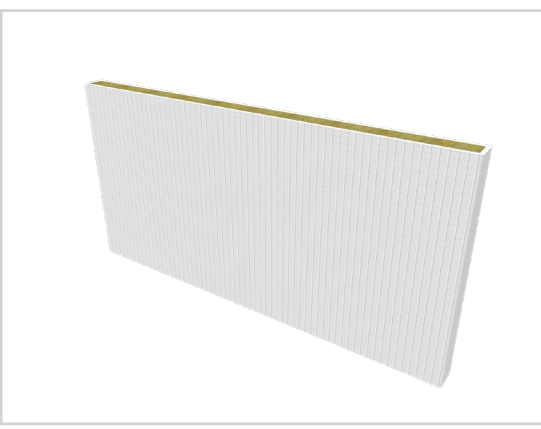
Note: FRL limited to the lower of the service or the batt.

Approvals for MonoWRAP and FyreBATT are covered via report FAS 210023

INSTALLATION

MonoWRAP

BATTS



Install the FyreBATT into the penetration and seal services appropriately, as per the [FyreBATT installation manual](#)

MEASURE



Using the table of approvals, work out what length of you MonoWRAP is needed. Measure out and mark the wrap.

CUT



Use a stanley knife or other sharp blade to slice the MonoWRAP at the correct length.

WRAP



Wrap the MonoWRAP around the service penetration tightly, and strap into place with stainless steel cable ties 50mm from each end, then at 150mm centers in-between. Note that for floors, MonoWRAP is needed on the top side only.

FOR WALLS MonoWRAP IS NEEDED ON BOTH SIDES

SYSTEM RANGE

MonoWRAP



Item Number	Description	Min Order Qty	Pallet Qty
MonoWRAP	Penetration wrap foiled one side - 40mm thick - 600 x 4000mm roll.	1	36

SYSTEM RANGE

Item Number	Description	Min Order Qty	Pallet Qty
FyreBATT 60	Coated mineral fibre Batt 60x600x1200	4	48
FyreFLEX 300W FyreFLEX 300G	FyreFLEtX Sealant Cartridge 300ml White or Grey	1	1920
FyreFLEX 600W FyreFLEX 600G	FyreFLEX Sealant Sausage 600ml White or Grey	1	1040
Cable Tie SS 7.9x910	Stainless cable ties 7.9mm width x 910mm	25	-
Cable Tie SS 7.9x521	Stainless cable ties 7.9mm width x 521mm	25	-
FyrePLUG- S	FyrePLUG® Pillow Small 100 x 250mm	30	1200
FyrePLUG- M	FyrePLUG® Pillow Medium 200 x 250mm	20	800
FyrePLUG- L	FyrePLUG® Pillow Large 300 x 250mm	15	600
FyreSET 10	FyreSET Fire rated mortar 10kg bag	1	64
Z-Brackets H90	1.1mm Gal- 50 x 90 x 50mm- Width 50mm	-	-
Z-Brackets H160	1.1mm Gal- 50 x 160 x 50mm - Width 50mm	-	-

*Split box fee may be applied to orders below the minimum order quantities. Contact sales@tgroup.com.au for your quoting needs.