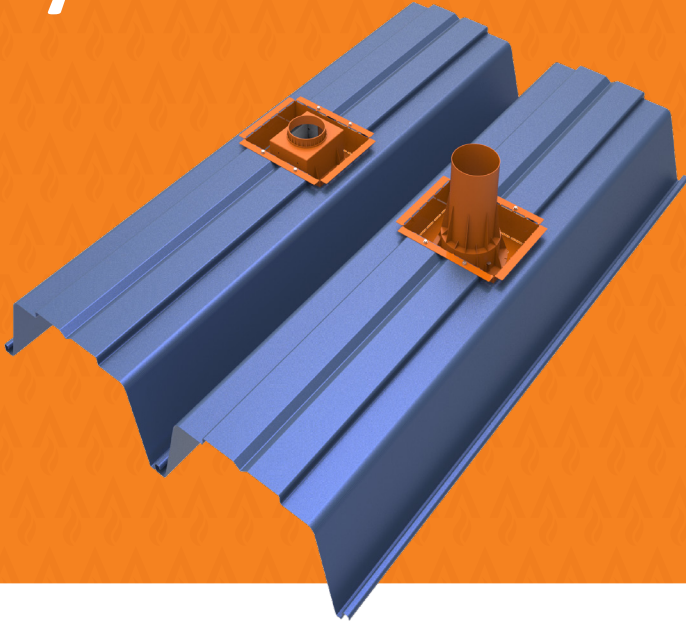
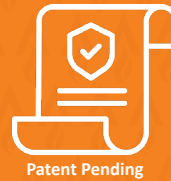


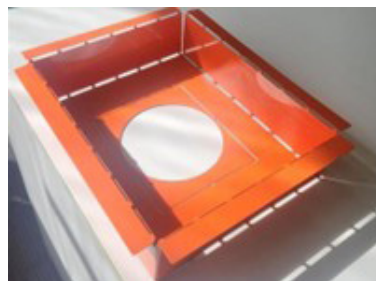
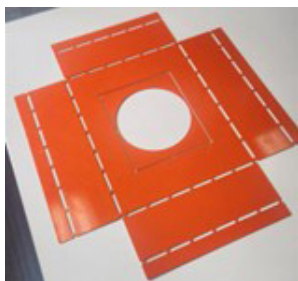
FyrePLATE



FyrePLATE is an Australian made, fire tested, adaptor plate for Trafalgar Cast-in fire collars installed into the profiled steel decks used in composite floor slabs, achieving FRL's up to -/180/180. The FyrePLATE is shipped flat, and bent to shape on-site using the built in fold-lines, and simply dropped into a rectangular cut-out in the deck, and fixed into place, ready for the installation of both stack and floor waste cast-in collars.

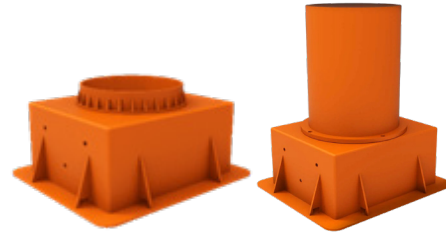


Approved Collar	Approved Service*	FRL	Fire Test Report
<p>FyreCOLLAR Floor Waste</p>	<ul style="list-style-type: none"> DN100 PVC Floor Waste DN100 HDPE Floor Waste DN100 Rehau Floor Waste DN100 DBLue Floor Waste 		
<p>FyreCOLLAR Cast-in Stack (high top)</p>	<ul style="list-style-type: none"> PVC stack up to DN100 HDPE stack up to DN100 Steel pipes up to NB100 Copper pipes up to Dn100 Pair coil Bundles 	Up to -/180/180	FC03475



INSTALLATION- STEEL FORMWORK

FLOOR WASTE COLLARS - WITH FYREPLATE

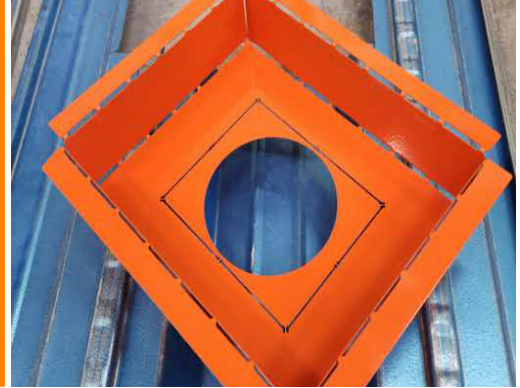


1. PREPARE



Locate required service positioning and cut hole to 250 x 310mm in the deck, larger than the FyrePLATE opening, to allow the plate to sit flat on the deck.

2. BEND AND FIT



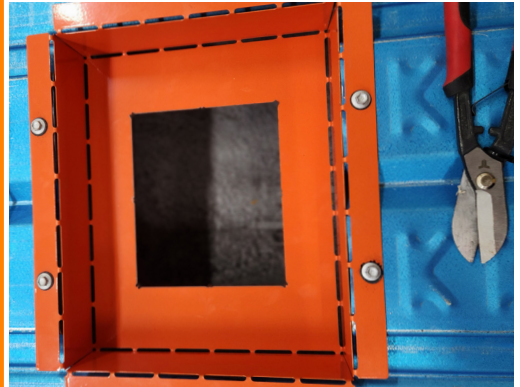
Bend the FyrePLATE to suit the deck profile and fit it over the cut-out in the deck.

3. FIX



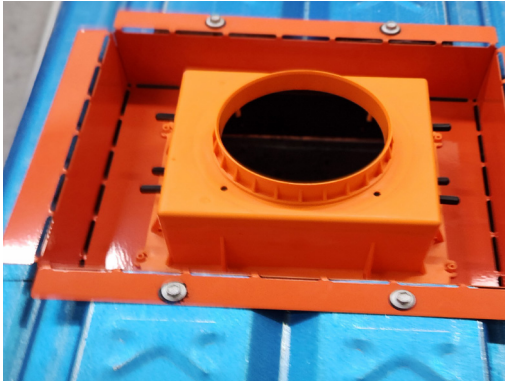
Fix the FyrePLATE to the deck using 4 x tek screws and use reinforced foil tape to cover any gaps >5mm to reduce concrete ingress.

4. FLOOR WASTE PUNCH



For floor waste applications remove the centre piece of the collar to leave a rectangular opening which will suit the Trafalgar FW Collar.

5. SECURE COLLAR & POUR



At this stage the system is ready for the concrete to be poured, the pipes can be run through the collar before or after this happens. Follow the installation steps in this manual for installation of the pipe.

INSTALLATION- STEEL FORMWORK

STACK COLLARS- WITH FyrePLATE

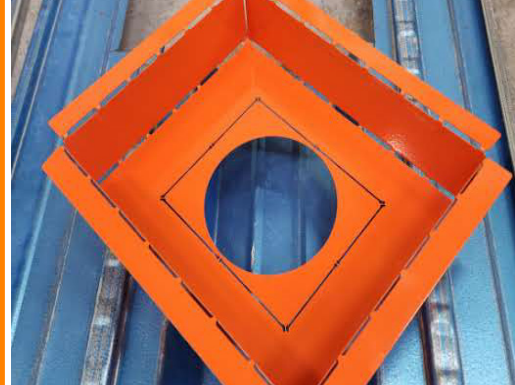


1. PREPARE



Locate required service positioning and cut hole to 250 x 310mm in the deck, larger than the FyrePLATE opening, to allow the plate to sit flat on the deck.

2. BEND AND FIT



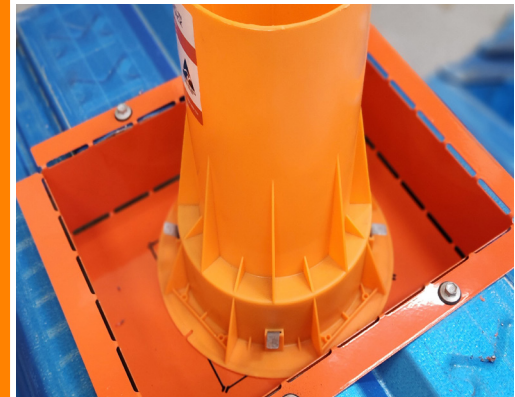
Bend the FyrePLATE to suit the deck profile and fit it over the cut-out in the deck.

3. FIX



Fix the FyrePLATE to the deck using 4 x tek screws and use reinforced foil tape to cover any gaps >5mm to reduce concrete ingress.

4. SECURE COLLAR & POUR



At this stage the system is ready for the concrete to be poured, the pipes can be run through the collar before or after this happens. Follow the installation steps in this manual for installation of the pipe.