



Technical Manual

Speedpanel Walls



Powered By:
 LORIENT
ASSA ABLOY



www.tfire.com.au | 1800 888 714

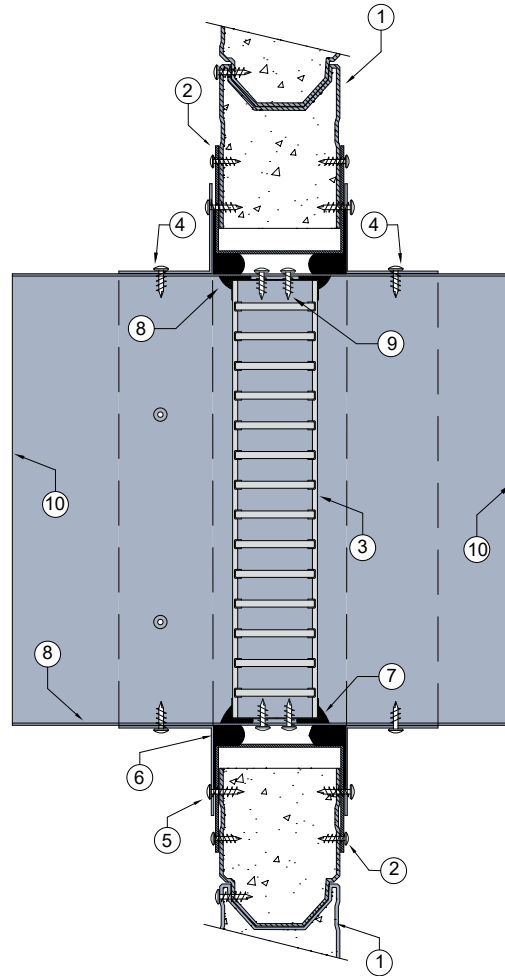
WALL 48 - SPEEDPANEL® (ANGLES BOTH SIDES)

Minimum 78mm thick



DESCRIPTION

- 1 Speedpanel® wall system 78mm thick.
- 2 Aperture lined out with galvanised steel C track section and screw fixed to wall with steel fixings as per Speedpanel® test approvals.
- 3 Lorient LVH44 intumescent fire damper.
- 4 Angles fixed to casing with steel self drilling screws at 150mm centres.
- 5 0.6mm (min) Z275 galvanised steel angles to all four sides. Angle dimensions shall be continuous and at least 2 x the dimension of the gap between the damper casing and the penetrated element.
- 6 Gap between casing and aperture filled with Lorient intumescent sealant. Backing rod used as required to control sealant fill depth to at least 25mm. Maximum annular gap between casing and wall 25mm.
- 7 Fire damper perimeter sealed with Lorient intumescent sealant.
- 8 Z275 galvanised steel casing minimum 0.6mm.
- 9 LVH44 fixed to casing with 2 x steel self drilling screws or pop rivets.
- 10 Casing terminates with breakaway joints, as per AS1682.2.



FIRE DAMPER

**LVH44 in steel casing
penetrating fire rated
Speedpanel® wall**

FRL Up to -/120/30

**Fire Resistance in
accordance with**

AS1530.4 2014

Approval Ref

EXOVA 33233400

Max size

600mm x 600mm

INSTALLATION INSTRUCTIONS

- ▶ Prepare the wall opening to accept the fire damper and install in wall, as shown in system detail.
 - ▶ Centralise the casing and firestop the gap between the casing and wall with Lorient intumescent sealant, note fill details in point 6.
 - ▶ Perimeter angles are mechanically fixed to casing with steel self drilling screws or pop rivets, as detailed in points 4 & 5.
 - ▶ Ductwork shall be connected with breakaway joints, as per point 10.
 - ▶ Ensure product identification labels are conspicuously positioned for easy identification.
 - ▶ Ensure convenient access is provided to allow for AS1851 inspection and maintenance routines.
- ▶ **Note: Damper casings and mounting flanges supplied by Trafalgar Fire.**

Powered by:

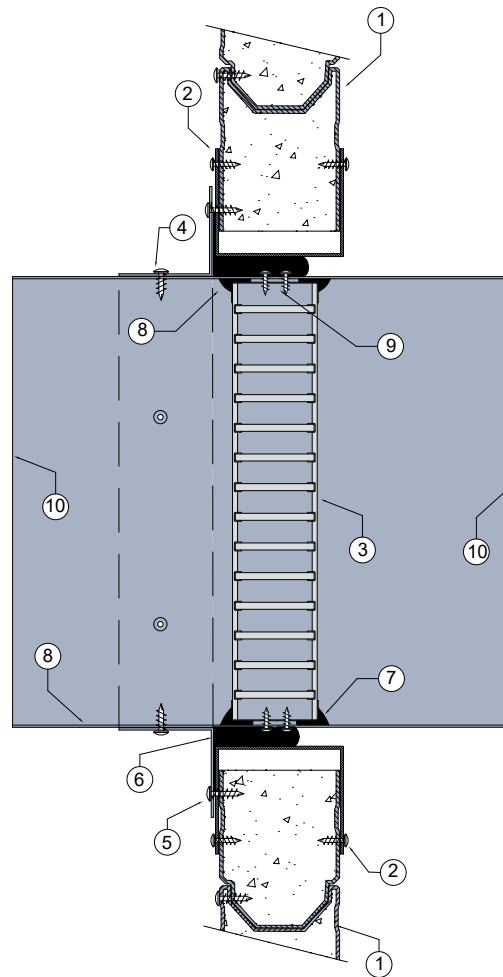


WALL 49 - SPEEDPANEL (ONE SIDED)

Minimum 78mm thick

DESCRIPTION

- 1 Speedpanel® wall system 78mm thick.
- 2 Aperture lined out with galvanised steel C track section and screw fixed to wall with steel fixings, as per Speedpanel® test approvals.
- 3 Lorient LVH44 intumescent fire damper.
- 4 Angles fixed to casing with steel self drilling screws at 150mm centres.
- 5 0.6mm (min) Z275 galvanised steel angles to all four sides. Angle dimensions shall be continuous and at least 2 x the dimension of the gap between the damper casing and the penetrated element.
- 6 Gap between casing and aperture filled with Lorient intumescent sealant. Backing rod used as required to control sealant fill depth to at least 50mm. Maximum annular gap between casing and wall 25mm.
- 7 Fire damper perimeter sealed with Lorient intumescent sealant.
- 8 Z275 galvanised steel casing minimum 0.6mm.
- 9 LVH44 fixed to casing with 2 x steel self drilling screws or pop rivets.
- 10 Casing terminates with breakaway joints, as per AS1682.2.



FyreDAMPER

**LVH44 in steel casing
penetrating fire rated
Speedpanel® wall**

FRL -/120/30

**Fire Resistance in
accordance with**

AS1530.4 2014

Approval Ref

EXOVA EWFA 33233400

Max single cell size

600mm x 600mm

INSTALLATION INSTRUCTIONS

- ▶ Prepare the wall opening to accept the fire damper and install in wall, as shown in system detail.
 - ▶ Centralise the casing and firestop the gap between the casing and wall with Lorient intumescent sealant, note fill details in point 6.
 - ▶ Perimeter angles are mechanically fixed to casing with steel self drilling screws or pop rivets, as detailed in points 4 & 5.
 - ▶ Ductwork shall be connected with breakaway joints, as per point 10.
 - ▶ Ensure product identification labels are conspicuously positioned for easy identification.
 - ▶ Ensure convenient access is provided to allow for AS1851 inspection and maintenance routines.
- ▶ **Note: Damper casings and mounting flanges supplied by Trafalgar Fire.**

Powered by:



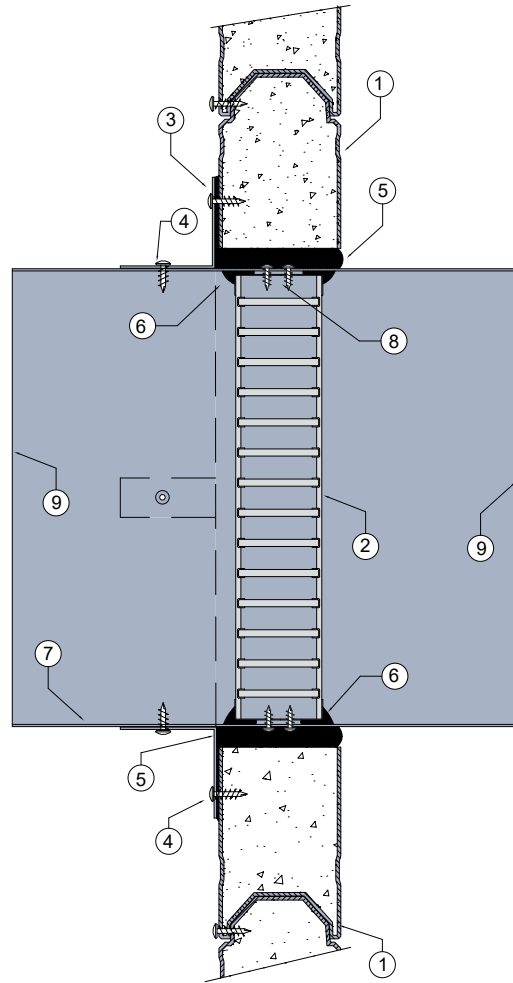
WALL 50 – SPEEDPANEL (CIRCULAR)

Minimum 78mm thick

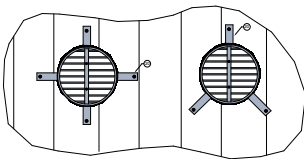


DESCRIPTION

- 1 78mm Speedpanel® wall system with cored out circular aperture.
- 2 Lorient LVH44C intumescent fire damper.
- 3 25mm x 40mm x 40mm x 0.1mm (min) Z275 galvanised steel angle brackets fixed with self drilling screws.
- 4 Angles fixed to wall and casing with steel self drilling screws.
- 5 Gap between casing and aperture filled full depth with Lorient intumescent sealant. Maximum annular gap between casing and wall 25mm.
- 6 Fire damper perimeter sealed with Lorient intumescent sealant.
- 7 Z275 galvanised steel casing minimum 0.6mm.
- 8 LVH44C fixed to casing with 2 x steel self drilling screws or pop rivets.
- 9 Casing terminates with breakaway joints, as per AS1682.2.



SPEEDPANEL® WALLS



Circular aperture cored straight through wall.
3 off fixing angles up to 250mm diameter.
4 off fixing angles 300mm to 450mm diameter.

FIRE DAMPER

LVH44C in steel casing penetrating fire rated Speedpanel® wall

FRL -/120/30

Fire Resistance in accordance with

AS1530.4 2014

Approval Ref

EXOVA EWFA 33233400

Max size

450mm diameter

Note: LVH44C can achieve -/120/120 when fitted with R1.0 Polyester insulated flexible duct

Approval Ref: EXOVA EWFA 55205900

Powered by:



INSTALLATION INSTRUCTIONS

- ▶ Prepare the wall opening to accept the fire damper and install in wall, as shown in system detail.
 - ▶ Centralise the casing and firestop the gap between the casing and wall with Lorient intumescent sealant, note fill details in point 6.
 - ▶ Perimeter angles are mechanically fixed to casing with steel self drilling screws or pop rivets, as detailed in points 4 & 5.
 - ▶ Ductwork shall be connected with breakaway joints, as per point 9.
 - ▶ Ensure product identification labels are conspicuously positioned for easy identification.
 - ▶ Ensure convenient access is provided to allow for AS1851 inspection and maintenance routines.
- ▶ **Note: Damper casings and mounting flanges supplied by Trafalgar Fire.**

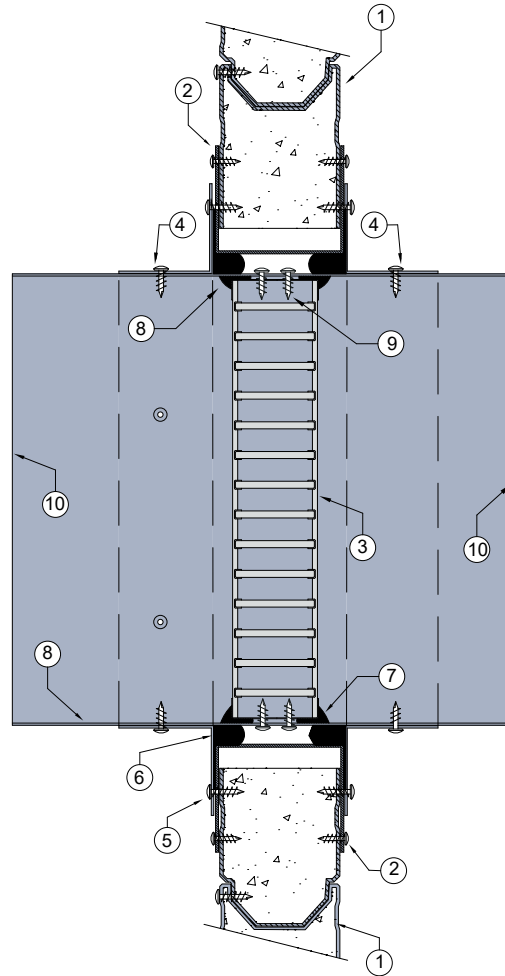
WALL 51 – SPEEDPANEL® (ANGLES BOTH SIDES)

Minimum 64mm thick



DESCRIPTION

- 1 Speedpanel® wall system 64mm thick.
- 2 Aperture lined out with galvanised steel C track section and screw fixed to wall with steel fixings as per Speedpanel® test approvals.
- 3 Lorient LVH44 intumescent fire damper.
- 4 Angles fixed to casing with steel self drilling screws at 150mm centres.
- 5 0.6mm (min) Z275 galvanised steel angles to all four sides. Angle dimensions shall be continuous and at least 2 x the dimension of the gap between the damper casing and the penetrated element.
- 6 Gap between casing and aperture filled with Lorient intumescent sealant. Backing rod used as required to control sealant fill depth to at least 25mm. Maximum annular gap between casing and wall 25mm.
- 7 Fire damper perimeter sealed with Lorient intumescent sealant.
- 8 Z275 galvanised steel casing minimum 0.6mm.
- 9 LVH44 fixed to casing with 2 x steel self drilling screws or pop rivets.
- 10 Casing terminates with breakaway joints, as per AS1682.2.



FIRE DAMPER

**LVH44 in steel casing
penetrating fire rated
Speedpanel® wall**

FRL Up to -/90/30

**Fire Resistance in
accordance with**

AS1530.4 2014

Approval Ref

EXOVA 33233400

Max size

600mm x 600mm

INSTALLATION INSTRUCTIONS

- ▶ Prepare the wall opening to accept the fire damper and install in wall, as shown in system detail.
 - ▶ Centralise the casing and firestop the gap between the casing and wall with Lorient intumescent sealant, note fill details in point 6.
 - ▶ Perimeter angles are mechanically fixed to casing with steel self drilling screws or pop rivets, as detailed in points 4 & 5.
 - ▶ Ductwork shall be connected with breakaway joints, as per point 10.
 - ▶ Ensure product identification labels are conspicuously positioned for easy identification.
 - ▶ Ensure convenient access is provided to allow for AS1851 inspection and maintenance routines.
- ▶ **Note: Damper casings and mounting flanges supplied by Trafalgar Fire.**

Powered by:



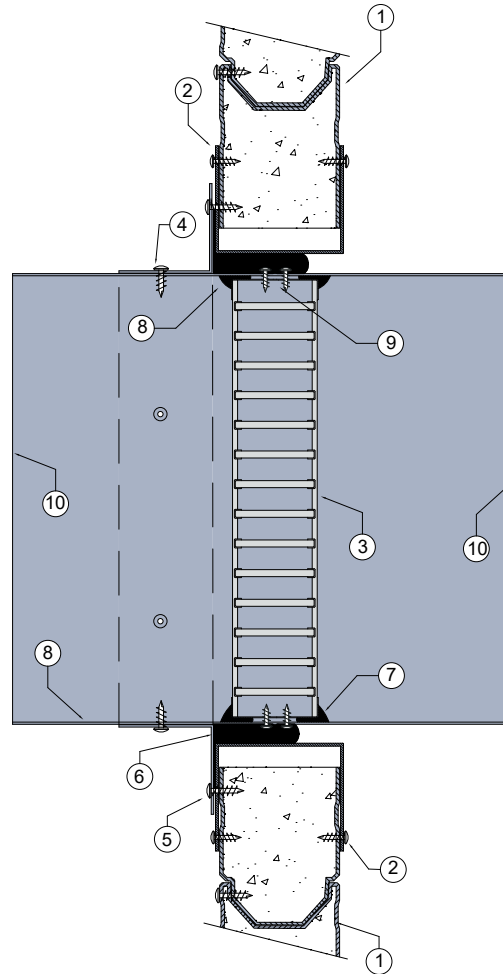
WALL 52 – SPEEDPANEL (ONE SIDED)

Minimum 64mm thick



DESCRIPTION

- 1 Speedpanel® wall system 64mm thick.
- 2 Aperture lined out with galvanised steel C track section and screw fixed to wall with steel fixings, as per Speedpanel® test approvals.
- 3 Lorient LVH44 intumescent fire damper.
- 4 Angles fixed to casing with steel self drilling screws at 150mm centres.
- 5 0.6mm (min) Z275 galvanised steel angles to all four sides. Angle dimensions shall be continuous and at least 2 x the dimension of the gap between the damper casing and the penetrated element.
- 6 Gap between casing and aperture filled with Lorient intumescent sealant. Backing rod used as required to control sealant fill depth to at least 50mm. Maximum annular gap between casing and wall 25mm.
- 7 Fire damper perimeter sealed with Lorient intumescent sealant.
- 8 Z275 galvanised steel casing minimum 0.6mm.
- 9 LVH44 fixed to casing with 2 x steel self drilling screws or pop rivets.
- 10 Casing terminates with breakaway joints, as per AS1682.2.



FyreDAMPER

**LVH44 in steel casing
penetrating fire rated
Speedpanel® wall**

FRL -/90/30

**Fire Resistance in
accordance with**

AS1530.4 2014

Approval Ref

EXOVA EWFA 33233400

Max single cell size

600mm x 600mm

INSTALLATION INSTRUCTIONS

- ▶ Prepare the wall opening to accept the fire damper and install in wall, as shown in system detail.
 - ▶ Centralise the casing and firestop the gap between the casing and wall with Lorient intumescent sealant, note fill details in point 6.
 - ▶ Perimeter angles are mechanically fixed to casing with steel self drilling screws or pop rivets, as detailed in points 4 & 5.
 - ▶ Ductwork shall be connected with breakaway joints, as per point 10.
 - ▶ Ensure product identification labels are conspicuously positioned for easy identification.
 - ▶ Ensure convenient access is provided to allow for AS1851 inspection and maintenance routines.
- ▶ **Note: Damper casings and mounting flanges supplied by Trafalgar Fire.**

Powered by:



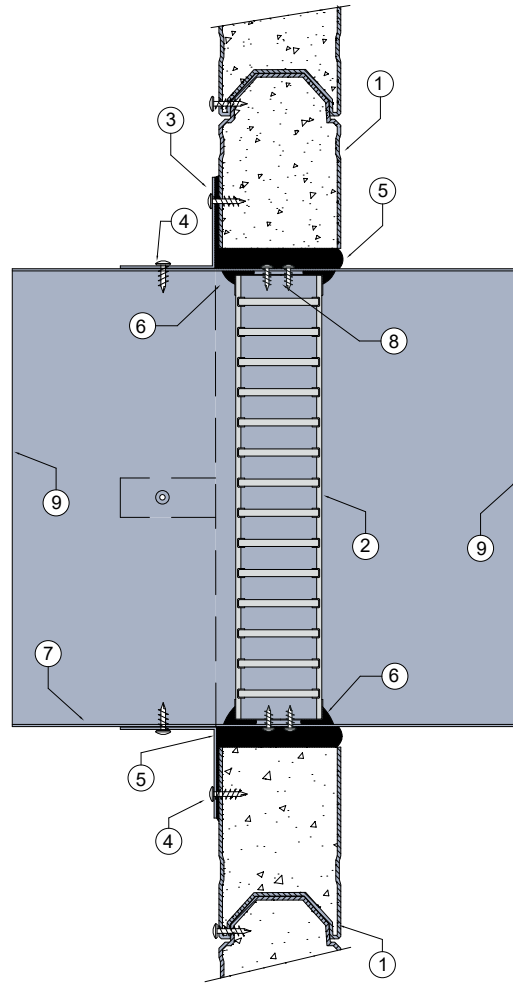
WALL 53 – SPEEDPANEL (CIRCULAR)

Minimum 64mm thick

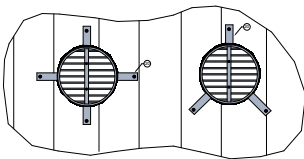


DESCRIPTION

- 1 64mm Speedpanel® wall system with cored out circular aperture.
- 2 Lorient LVH44C intumescent fire damper.
- 3 25mm x 40mm x 40mm x 0.1mm (min) Z275 galvanised steel angle brackets fixed with self drilling screws.
- 4 Angles fixed to wall and casing with steel self drilling screws.
- 5 Gap between casing and aperture filled full depth with Lorient intumescent sealant. Maximum annular gap between casing and wall 25mm.
- 6 Fire damper perimeter sealed with Lorient intumescent sealant.
- 7 Z275 galvanised steel casing minimum 0.6mm.
- 8 LVH44C fixed to casing with 2 x steel self drilling screws or pop rivets.
- 9 Casing terminates with breakaway joints, as per AS1682.2.



SPEEDPANEL® WALLS



Circular aperture cored straight through wall.
3 off fixing angles up to 250mm diameter.
4 off fixing angles 300mm to 450mm diameter.



LVH44C in steel casing penetrating fire rated Speedpanel® wall

FRL -/90/30

Fire Resistance in accordance with

AS1530.4 2014

Approval Ref

EXOVA EWFA 33233400

Max size

450mm diameter

Note: LVH44C can achieve -/120/120 when fitted with R1.0 Polyester insulated flexible duct

Approval Ref: EXOVA EWFA 55205900

INSTALLATION INSTRUCTIONS

- ▶ Prepare the wall opening to accept the fire damper and install in wall, as shown in system detail.
 - ▶ Centralise the casing and firestop the gap between the casing and wall with Lorient intumescent sealant, note fill details in point 6.
 - ▶ Perimeter angles are mechanically fixed to casing with steel self drilling screws or pop rivets, as detailed in points 4 & 5.
 - ▶ Ductwork shall be connected with breakaway joints, as per point 9.
 - ▶ Ensure product identification labels are conspicuously positioned for easy identification.
 - ▶ Ensure convenient access is provided to allow for AS1851 inspection and maintenance routines.
- ▶ **Note: Damper casings and mounting flanges supplied by Trafalgar Fire.**

Powered by:



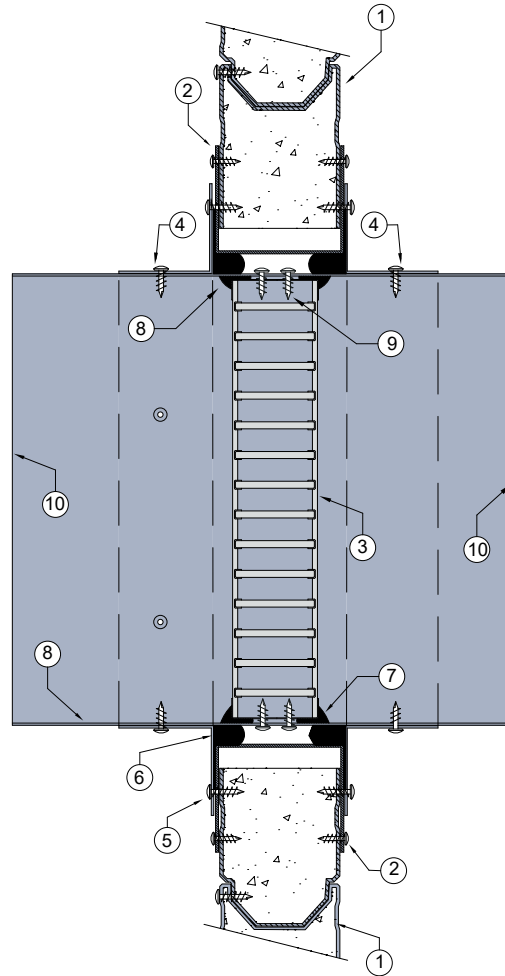
WALL 54 - SPEEDPANEL® (ANGLES BOTH SIDES)

Minimum 51mm thick



DESCRIPTION

- 1 Speedpanel® wall system 51mm thick.
- 2 Aperture lined out with galvanised steel C track section and screw fixed to wall with steel fixings as per Speedpanel® test approvals.
- 3 Lorient LVH44 intumescent fire damper.
- 4 Angles fixed to casing with steel self drilling screws at 150mm centres.
- 5 0.6mm (min) Z275 galvanised steel angles to all four sides. Angle dimensions shall be continuous and at least 2 x the dimension of the gap between the damper casing and the penetrated element.
- 6 Gap between casing and aperture filled with Lorient intumescent sealant. Backing rod used as required to control sealant fill depth to at least 25mm. Maximum annular gap between casing and wall 25mm.
- 7 Fire damper perimeter sealed with Lorient intumescent sealant.
- 8 Z275 galvanised steel casing minimum 0.6mm.
- 9 LVH44 fixed to casing with 2 x steel self drilling screws or pop rivets.
- 10 Casing terminates with breakaway joints, as per AS1682.2.



**LVH44 in steel casing
penetrating fire rated
Speedpanel® wall**

FRL Up to -/60/30

**Fire Resistance in
accordance with**

AS1530.4 2014

Approval Ref

EXOVA 33233400

Max size

600mm x 600mm

INSTALLATION INSTRUCTIONS

- ▶ Prepare the wall opening to accept the fire damper and install in wall, as shown in system detail.
 - ▶ Centralise the casing and firestop the gap between the casing and wall with Lorient intumescent sealant, note fill details in point 6.
 - ▶ Perimeter angles are mechanically fixed to casing with steel self drilling screws or pop rivets, as detailed in points 4 & 5.
 - ▶ Ductwork shall be connected with breakaway joints, as per point 10.
 - ▶ Ensure product identification labels are conspicuously positioned for easy identification.
 - ▶ Ensure convenient access is provided to allow for AS1851 inspection and maintenance routines.
- ▶ **Note: Damper casings and mounting flanges supplied by Trafalgar Fire.**

Powered by:



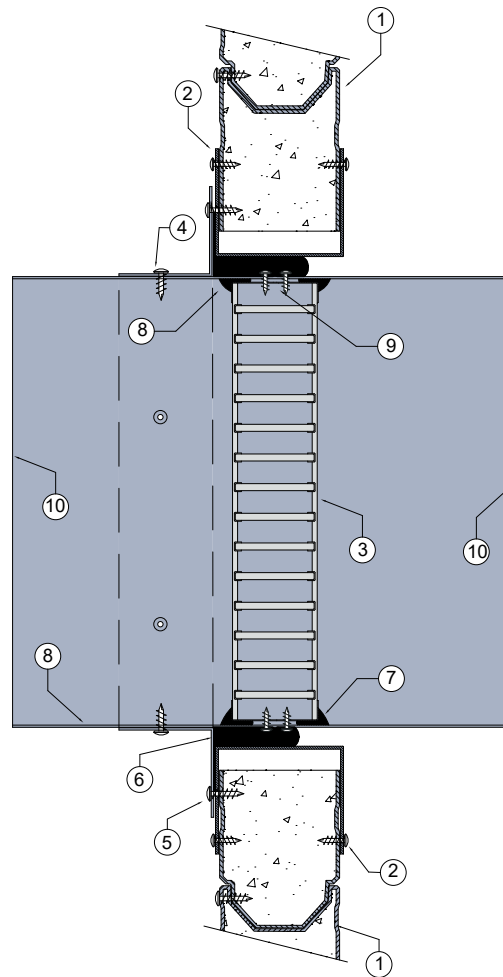
WALL 55 – SPEEDPANEL (ONE SIDED)

Minimum 51mm thick



DESCRIPTION

- 1 Speedpanel® wall system 51mm thick.
- 2 Aperture lined out with galvanised steel C track section and screw fixed to wall with steel fixings, as per Speedpanel® test approvals.
- 3 Lorient LVH44 intumescent fire damper.
- 4 Angles fixed to casing with steel self drilling screws at 150mm centres.
- 5 0.6mm (min) Z275 galvanised steel angles to all four sides. Angle dimensions shall be continuous and at least 2 x the dimension of the gap between the damper casing and the penetrated element.
- 6 Gap between casing and aperture filled with Lorient intumescent sealant. Backing rod used as required to control sealant fill depth to at least 50mm. Maximum annular gap between casing and wall 25mm.
- 7 Fire damper perimeter sealed with Lorient intumescent sealant.
- 8 Z275 galvanised steel casing minimum 0.6mm.
- 9 LVH44 fixed to casing with 2 x steel self drilling screws or pop rivets.
- 10 Casing terminates with breakaway joints, as per AS1682.2.



FyreDAMPER

**LVH44 in steel casing
penetrating fire rated
Speedpanel® wall**

FRL -/60/30

**Fire Resistance in
accordance with**

AS1530.4 2014

Approval Ref

EXOVA EWFA 33233400

Max single cell size

600mm x 600mm

INSTALLATION INSTRUCTIONS

- ▶ Prepare the wall opening to accept the fire damper and install in wall, as shown in system detail.
 - ▶ Centralise the casing and firestop the gap between the casing and wall with Lorient intumescent sealant, note fill details in point 6.
 - ▶ Perimeter angles are mechanically fixed to casing with steel self drilling screws or pop rivets, as detailed in points 4 & 5.
 - ▶ Ductwork shall be connected with breakaway joints, as per point 10.
 - ▶ Ensure product identification labels are conspicuously positioned for easy identification.
 - ▶ Ensure convenient access is provided to allow for AS1851 inspection and maintenance routines.
- ▶ **Note: Damper casings and mounting flanges supplied by Trafalgar Fire.**

Powered by:



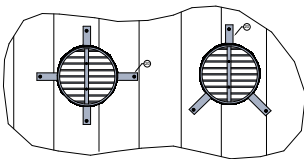
WALL 56 - SPEEDPANEL (CIRCULAR)

Minimum 51mm thick

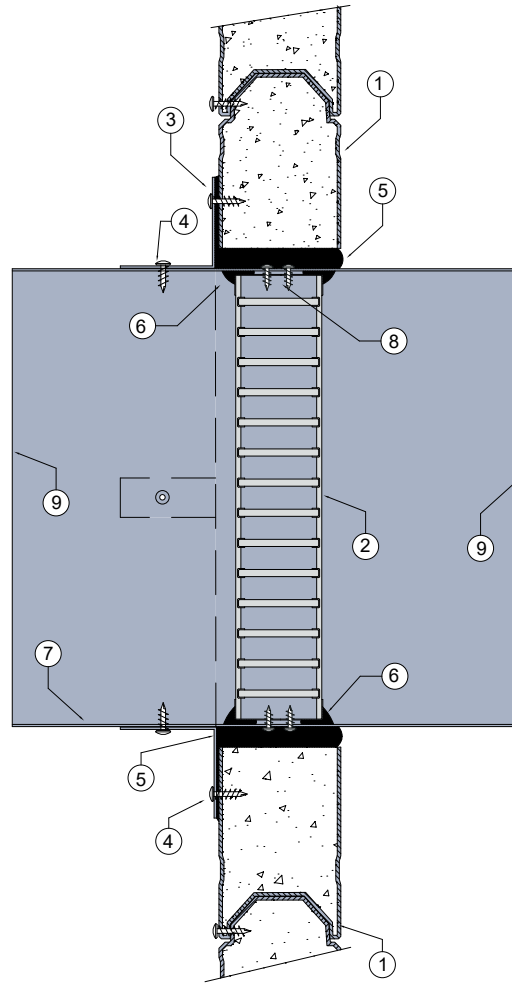


DESCRIPTION

- 1 51mm Speedpanel® wall system with cored out circular aperture.
- 2 Lorient LVH44C intumescent fire damper.
- 3 25mm x 40mm x 40mm x 0.1mm (min) Z275 galvanised steel angle brackets fixed with self drilling screws.
- 4 Angles fixed to wall and casing with steel self drilling screws.
- 5 Gap between casing and aperture filled full depth with Lorient intumescent sealant. Maximum annular gap between casing and wall 25mm.
- 6 Fire damper perimeter sealed with Lorient intumescent sealant.
- 7 Z275 galvanised steel casing minimum 0.6mm.
- 8 LVH44C fixed to casing with 2 x steel self drilling screws or pop rivets.
- 9 Casing terminates with breakaway joints, as per AS1682.2.



Circular aperture cored straight through wall.
3 off fixing angles up to 250mm diameter.
4 off fixing angles 300mm to 450mm diameter.



LVH44C in steel casing penetrating fire rated Speedpanel® wall

FRL -/60/30

Fire Resistance in accordance with

AS1530.4 2014

Approval Ref

EXOVA EWFA 33233400

Max size

450mm diameter

Note: LVH44C can achieve -/120/120 when fitted with R1.0 Polyester insulated flexible duct

Approval Ref: EXOVA EWFA 55205900

Powered by:



INSTALLATION INSTRUCTIONS

- ▶ Prepare the wall opening to accept the fire damper and install in wall, as shown in system detail.
 - ▶ Centralise the casing and firestop the gap between the casing and wall with Lorient intumescent sealant, note fill details in point 6.
 - ▶ Perimeter angles are mechanically fixed to casing with steel self drilling screws or pop rivets, as detailed in points 4 & 5.
 - ▶ Ductwork shall be connected with breakaway joints, as per point 9.
 - ▶ Ensure product identification labels are conspicuously positioned for easy identification.
 - ▶ Ensure convenient access is provided to allow for AS1851 inspection and maintenance routines.
- ▶ **Note: Damper casings and mounting flanges supplied by Trafalgar Fire.**