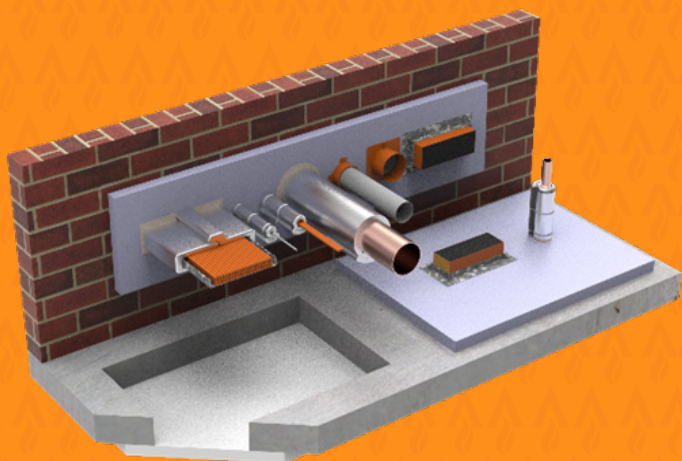
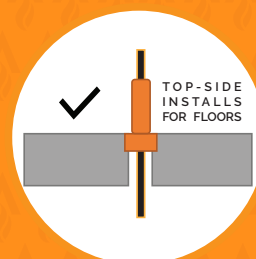


# FyreBOARD MAXILITE

## Penetration Systems



Maxilite is a lightweight high-performance fire rated board which is highly adaptable to provide tested solutions in challenging scenarios. Stable under high temperatures whilst being crack free provides confidence when applying 60mm Maxilite for sealing penetration systems in walls, floor and ceilings.



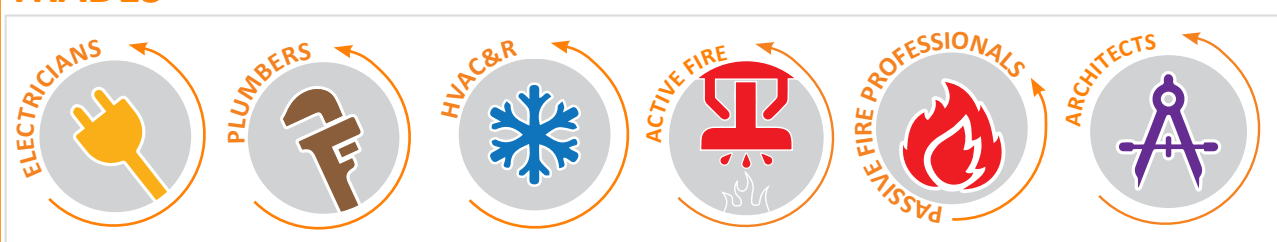
### KEY FEATURES

- Lightweight
- FRL up to 4 hours
- Tested to AS1530.4-2014
- High resistance to heat
- Retrofit application
- Fully tested and approved with Trafalgar penetration products
- Environmentally friendly
- Various methods of installation
- Easy to cut and handle

### APPLICATIONS

<b>Electricians</b>	Power Data cables Conduits Cable tray
<b>Plumbers</b>	Steel and Copper pipes PVC pipes PEX pipes PEX-AL-PEX pipes
<b>HVAC&amp;R</b>	Insulated Pipes <a href="#">Fire Damper Upgrades</a>
<b>Active Fire</b>	Sprinkler Pipes Fire Cables

### TRADES



# Table of Contents



Click

page title to go to

Page

	Page
Overview	1
What is Maxilite and its Applications	3
Product Specifications	4
<b>FRL Tables</b>	
FRL Details	5
Maxilite Blank Penetrations- Walls	6
Maxilite Blank Penetrations- Ceilings and Floors	7
Service Penetrations	8
Ceiling Penetrations	9
FyreBOX Penetrations	10
<b>FRL Tables</b>	
Electrical, Data and Communications Cables- Wall Penetrations	12
Electrical, Data and Communications Cables- Floor Penetrations	13
Electrical, Data and Communications Cables- Ceiling Penetrations	14
Metal Pipes- Wall Penetrations	16
Metal Pipes- Floor Penetrations	17
Metal Pipes-Ceiling Penetrations	18
PEX Pipes-Wall Penetrations	19
PEX Pipes- Floors Penetrations	20
PEX Pipes- Ceiling Penetrations	21
PVC Conduits- Walls Penetrations	22
PVC Conduits- Floor Penetrations	23
PVC Conduits- Ceiling Penetrations	24
PVC Pipes- Wall and Floor Penetrations	25
PVC Pipes-Ceiling Penetrations	26
HVAC&R- Walls Penetrations	27
HVAC&R- Floor Penetrations	28
HVAC&R- Ceiling Penetrations	29
Steel Threaded Rod- Floor Penetrations	30
Installation- Maxilite for penetrations	31
System Range- Related Products	33
FAQs	39
Technical Drawings	40-51

# FyreBOARD MAXILITE

## Fire Rated Board

## What is MAXILITE

Maxilite is a lightweight, high performance fire rated board. It is calcium-silicate based product, bonded together with non-organic binders, no asbestos, and low volatile organic compounds (VOC's). It is a versatile product, providing numerous potential solutions in even the most difficult situations.

Maxilite boards are able to withstand high temperatures while remaining stable and crack free, making it an ideal product for fire protection. Particularly suited to closing-down oversize penetrations, Maxilite has been tested to current AS1530.4 – 2014 with many of our products, presenting various solutions to the industry.

Whilst this technical manual will focus on penetrations, Maxilite can also be used other applications including steel protection and bulkheads.

- [FyreBoard Maxilite Structural Steel Fire Proofing Systems Technical Manual](#)
- [FyreBOARD Maxilite Bulkheads Technical Manual](#)
- [Damper Upgrades Technical Manual](#)



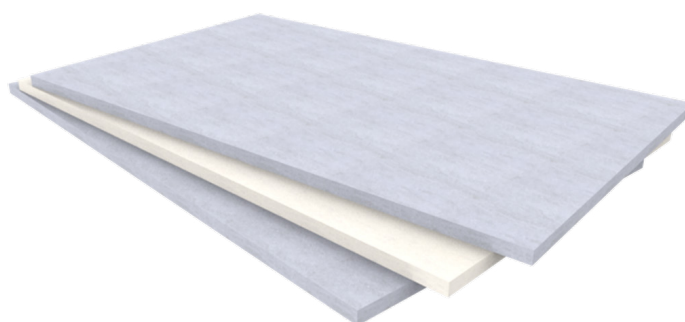
## Applications

Maxilite systems are suitable for penetrations in a building through various fire rated substrates including plasterboard and Hebel walls, concrete/masonry walls and floors and plasterboard ceilings. Maxilite has been tested and approved with the use of Trafalgar products for certain services which will be detailed in this technical guide.

# PRODUCT SPECIFICATIONS



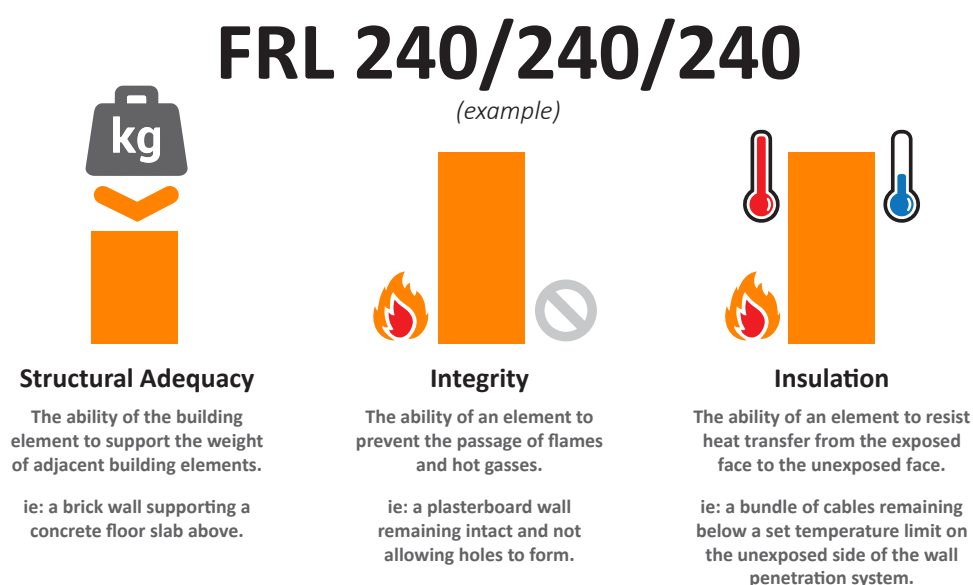
Spec	Detail		
Thickness	30, 40 & 60mm		
Sheet size (half sheets available)	1520x1000mm (white) 2020x1220mm (blue)		
Density (avg, dry)	330Kg/m <sup>2</sup>		
Board weight	30mm	1520x1000: 16Kg	2040x1220: 23Kg
	40mm	1520x1000: 22Kg	2040x1220: 30Kg
	60mm	1520x1000: 32Kg	2040x1220: 45Kg
Material	Calcium Silicate with non-organic binders		
Combustible	Non-combustible to AS1530.1		
Maximum service temp	1000 deg C		
Permeability to gasses	1.0 nPm		
Specific heat	0.84 KJ/(KgK)		
Thermal conductivity	0.09 W/(mK) at 200 deg C		
R-value	0.7 m <sup>2</sup> K/W		
Acoustic ratings	30mm: Rw30 (Rw+Ctr 28) 40mm: Rw31 (Rw+Ctr 28) 60mm: Rw33 (Rw+Ctr 30)		
Flexural strength	1.27MPa		
Test for asbestos content	0%		
Storage	Store in a cool, dry environment		
Handling	Transport on pallets to avoid breakage		



# FRL DETAILS

## Fire Rating – How is fire performance measured?

An FRL (fire resistance level) is a handy way of summarising the performance of a building element. It consists of 3 numbers, all given in minutes:



## Integrity

The Maxilite system can achieve the integrity performance for up to 4 hours physically stopping the direct spread of fire, however the insulation performance of the penetration will be limited to the type of wall, floor or ceiling being used, and thermal conductivity of the services in the penetration.

## Insulation (Temperature Rise)

Heat transfer via conduction (or heat rise) will occur through the conductive parts of any penetration system. Maxilite boards are able to withstand high temperatures and achieve 4-hour insulation in the case of blank penetrations which is limited to the FRL of the substrate. Where services penetrate Maxilite board, often TWrap is needed to insulate the conductive materials (cables, metal pipes etc) as shown the FRL tables below.

# Maxilite Blank Penetrations

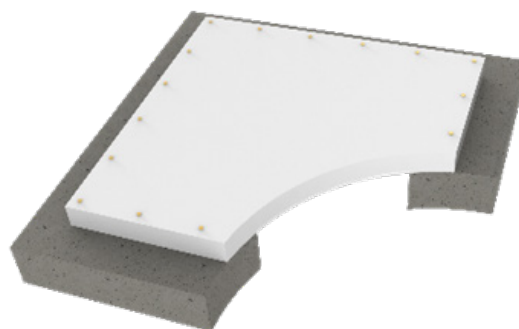
## Blank Seals in Walls (no services)



Approved walls	Fixing specification	Max Aperture Size	Install Type
Plasterboard stud walls (single and double layer)	10g plaster screws into studs at max 200mm centers	1.8m²  (or max size supported by the wall manufacturer’s approvals with aperture framed if needed)	60mm -/120/120  <b>Test report: FCO2586</b>
Plasterboard shaft walls (CH-stud type only)			
AAC 75mm walls (Hebel/Walsc)			60mm -/90/90
Masonry / Concrete walls	M6 Masonry anchors at max 200mm centers	1.8m²  (aperture designed as per AS3600/3700 design using lintels where required)	60mm -/180/180  <b>Test report: FCO2586</b>

## Maxilite Blank Penetrations

Blank seals in Floors & Ceilings (no services)



Approved walls	Fixing specification	Max Aperture Size	FRL & Maxilite Thickness
Concrete floors	M6 Masonry anchors at max 200mm centres	1.8m <sup>2</sup> (aperture designed as per AS3600 design)	40mm -/120/120  Test report: FCO2586 60mm -/240/240  Test report: FCO2586
Plasterboard Ceilings – 2x layer	10gx100mm plasterboard screws at 200mm centers (with additional ceiling framing)	500x200mm	60mm -/60/60 with 60 mins RISF Test report: RTL FT1552.01
Plasterboard Ceilings – 3x layer	10gx100mm plasterboard screws at 200mm centers (with additional ceiling framing)	500x200mm	60mm -/120/120 with 60 mins RISF Test report: RTL FT1553.01

Refer to the drawings at the end of the manual for installation specifications, as well as the installation section.

# SERVICE PENETRATIONS



Maxilite systems are suitable for penetrations in a building through various fire rated substrates including plasterboard and Hebel walls, concrete/masonry walls and floors and plasterboard ceilings. Maxilite has been tested and approved for the following services and products. Note that Maxilite will 'close down' the larger penetration, and each separate service type will need to be sealed appropriately with the following 'local' penetration systems:

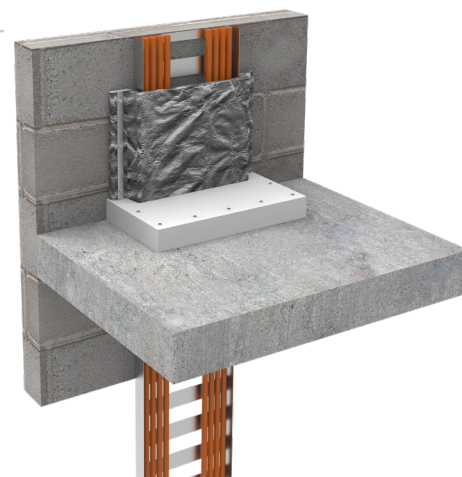
Services	Trafalgar fire stopping systems in Maxilite board
<b>Electrical, Data and Communications Cables</b>	FyreFLEX sealant & TWrap FyreBOX range – Maxi & mini & TWrap
<b>Steel and Copper Pipes</b>	FyreFLEX sealant & TWrap FyreBOX range – Maxi & mini & TWrap
<b>Insulated Copper Pipes</b>	FyrePEX HP Sealant & TWrap FyreCOLLAR range & TWrap FyreBOX range – Maxi & mini & TWrap
<b>PVC Pipe and Conduits</b>	FyrePEX HP FyreCOLLAR range FyreBOX range – Maxi & mini & TWrap
<b>PEX &amp; PEX-al-PEX</b>	FyrePEX HP & FyreSHEATH FyreBOX range – Maxi & mini & TWrap
<b>Steel Threaded Rod</b>	FyreFLEX & TWrap
<b>Intumescent Dampers</b>	Upgrade existing damper installations in oversized penetrations – refer to our Damper Upgrades technical manual.



## Service Separation

Services can be as close as 50mm apart when using Maxilite board as per the systems in this manual shown on the following pages.

Note that cable trays can be installed hard up against the edges of a penetration system if required.

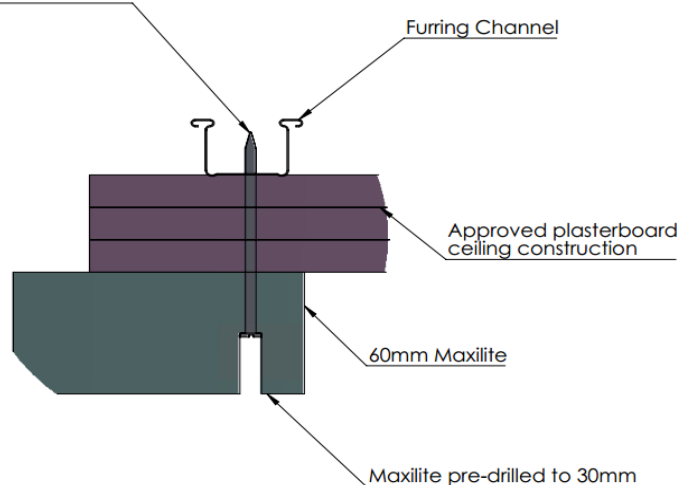


# CEILING PENETRATIONS



Maxilite systems are suitable for penetrations in a building through various fire rated substrates including plasterboard ceilings. When applying the Maxilite board to the ceiling, ensure that the board extends past the furring channel and is secured into it as shown in the image below. For further installation instructions, please refer to [pages 29-30](#).

8g x 100mm screw fixed through Maxilite, plasterboard, and into furring channel which runs down each side of the penetration. 5 screws used in each end piece, and 4 in the middle piece.



## FyreBOX ceiling pennaetrations

Referring to FyreBOX systems for ceiling penetrations (test report: **FC10266-01-4**), the FRL tables in the proceeding section, it states suitable for 3x 16mm FR plasterboard ceilings for -/120/120 & 60 minutes RISF. It should be noted that FyreBOX systems incorporating the same details including TWrap length are also suitable for additional ceiling constructions for the following FRL & RISF values.

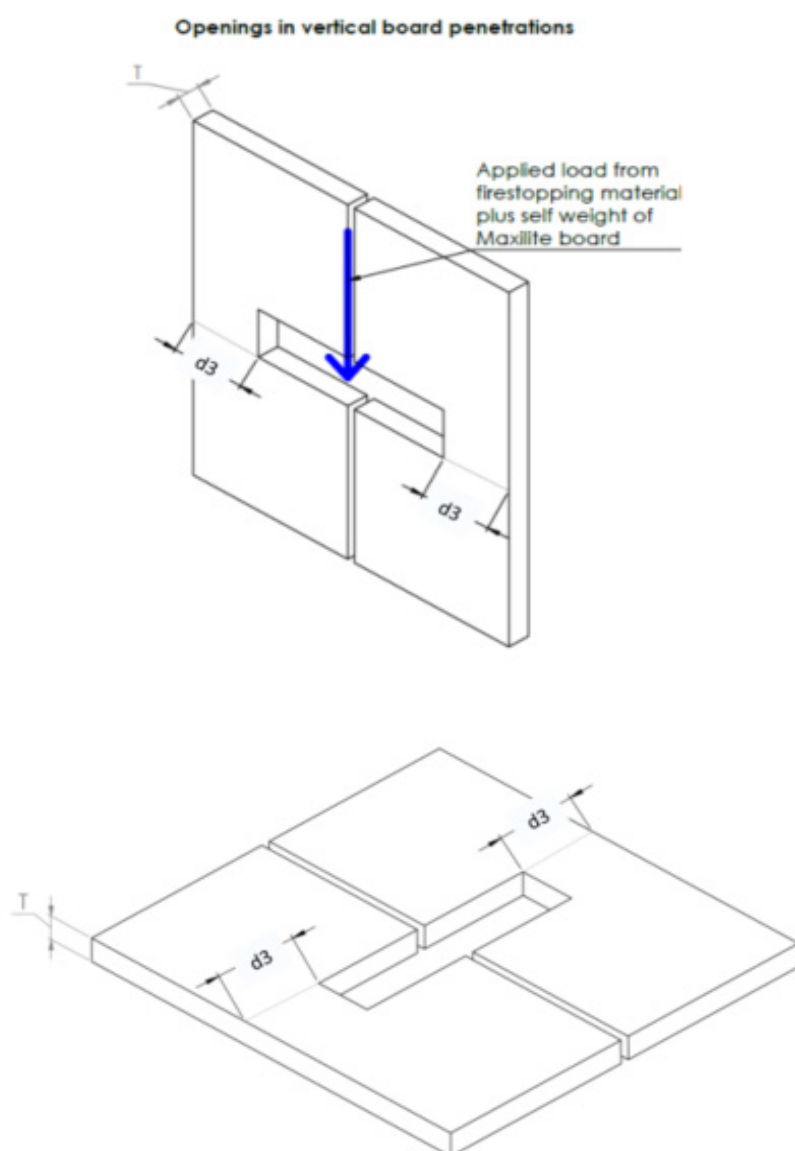
Ceiling construction	FRL	RISF
Minimum thickness of 16mm rated at (30)/30/30	-/30/30	30 minutes
Minimum thickness of 29mm rated at (60)/60/60	-/60/60	60 minutes
Minimum thickness of 32mm rated at (90)/90/90	-/90/90	60 minutes
Minimum thickness of 48mm rated at (120)/120/120	-/120/120	60 minutes



# FYREBOX PENETRATIONS

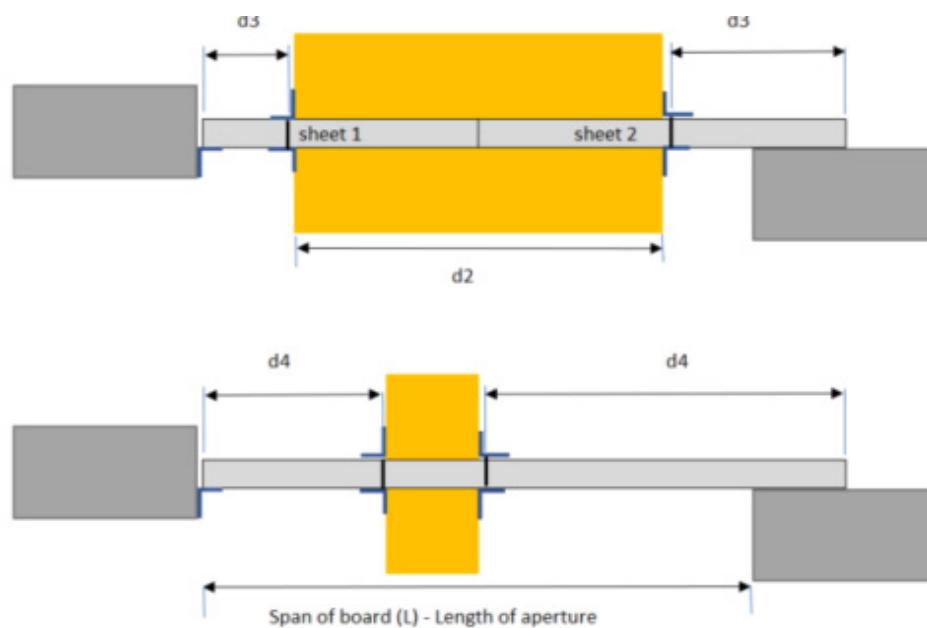


When installing the FyrBOX Maxi systems with maxilite, care must be taken to ensure the correct Maxilite board length is selected to ensure the system can handle the load placed on the board. The proceeding figures and tables display the required Maxilite sizes corresponding to the size of the FyreBOX Maxi.



*Openings in minimum 60mm thick Maxilite board with an opening for FyreBOX. Two sheets only*

# FYREBOX PENETRATIONS



Item	Description
Span	Separation of support for sheet
d2	Width of the box (eg 350, 450...750) etc
d3	Sheet width between the short edge of the box and the edge of the sheet. It shall be at least 150mm for spans up to 850mm. For larger spans refer to Table
d4	Sheet width between the long edge of the box and the edge of the sheet. It shall be at least 150mm for spans up to 850mm. For larger spans refer to Table
Clearance around box	Shall be a maximum of 10mm
Even cut in each sheet	The cutout for the Fyrebox in each sheet shall be equal +/- 20mm

Openings in minimum 60mm thick Maxilite board with an opening for FyreBOX

Residual Section d3 (m) for various spans and various Fyrebox designs								
Span L (m)	1.1	1.2	1.3	1.4	1.5	1.6	1.7	1.8
Fyrebox Maxi 350	0.15	0.15	0.15	0.15	0.15	0.15	0.16	0.18
Fyrebox Maxi 550	0.15	0.15	0.15	0.17	0.19	0.21	0.23	0.26
Fyrebox Maxi 650	0.15	0.15	0.17	0.19	0.22	0.24	0.27	0.3
Fyrebox Maxi 750	0.15	0.17	0.2	0.22	0.25	0.28	0.31	0.35
Fyrebox Maxi 1100	0.21	0.24	0.27	0.31	0.34	0.39	0.43	0.49

## FRLs - Electrical, data and communications cables

### Wall Penetrations



Service	Specification	Fire Stopping Specification	TWrap	Max. FRL and Maxilite Thickness
Cable bundles	AS1530.4-2014 Appendix D1 copper core power cables* <b>-TPS cables</b> <b>-Fire cables</b> <b>-Single core</b> <b>-3c+E cables etc</b>	<a href="#">FyreFLEX Sealant and TWrap</a>  The maximum annular gaps between the cables and the Maxilite is 20mm.	300mm*	<b>60mm</b> -/180/120  <b>Test report: FCO2586</b>
Cable trays up to 300mm		Fill FyreFLEX Sealant to full depth of board (60mm) and finish with 50x50mm fillet on both sides of the wall.		
Data cables	Up to 20x CAT6 cables	<a href="#">FyreFLEX Sealant and TWrap</a>  The maximum annular gaps between the cables and the Maxilite is 5mm.  Fill FyreFLEX Sealant to full depth of board (60mm) and finish with 50x50mm fillet on both sides of the wall.		<b>60mm</b> -/120/120  <b>Test report: FCO2586</b>
TPS cables	Up to 12x TPS cables	<a href="#">FyreBOX Mini/Maxi and TWrap</a>  Annular gaps from 5-20mm. Fill to full depth of board with FyreFLEX sealant.	300mm	<b>60mm</b> FRL-/120/120  <b>Test report: FC10266-01-4</b>
Large bundles and/or mixed services	All copper core cables (AS1530.4 appendix D1 and D2 cable sets) with cable trays up to 1000mm wide, PVC conduits, Fibre conduits, other pipe services etc.		600mm* for D1	
			450mm* for D2	
Aluminium cables	Up to 3x 240mm <sup>2</sup> 28mm OD		300mm	
	Up to 4x 120mm <sup>2</sup>			
	Up to 9x 70mm <sup>2</sup> 17mm OD			
Data cables	Up to 3x RG6 cables			
	NBN Fibre optic cable			

\* Loose TWRAP™/FyreWrap® infill material to be packed under the TWRAP™ for at least 300mm off the penetration

## FRLs - Electrical, data and communications cables

### Floor Penetrations



Service	Specification	System	TWrap	Max. FRL and Maxilite thick-ness
Cable bundles and Cable trays up to 300mm	AS1530.4-2014 Appendix D1 copper core power cables* -TPS cables -Fire cables -Single core -3C+E cables etc	<a href="#">FyreFLEX Sealant and TWrap</a>  The maximum annular gaps between the cables and the Maxilite is 30mm.  Fill FyreFLEX Sealant to full depth of board and finish with 50x50mm fillet on the top side only.	450mm	<b>60mm</b> -/120/120  <b>Test report: FCO2586</b>
			600mm	<b>60mm + 30mm patch</b> -/240/240  <b>Test report: FAS200048</b>
TPS cables	Up to 12x TPS cables	<a href="#">FyreBOX Mini/Maxi and TWrap</a>  Annular gaps from 5-20mm. Fill to full depth of board with FyreFLEX sealant.	300mm	<b>60mm</b> -/120/120  <b>Test report: FC10266-01-4</b>
3C + E power cables	Up to 2x 19mm 3C + E cables			
Data/	up to 10x CAT6 cables	<a href="#">FyreFLEX Sealant and TWrap</a>  The maximum annular gaps between the cables and the Maxilite is 30mm.  Fill FyreFLEX Sealant to full depth of board and finish with 50x50mm fillet on the top side only.	300mm	<b>60mm</b> -/120/120  <b>Test report: FCO2586</b>
	Up to 24 bundles Telecom cables, maximum 15mm diameter with PVC sheathing and insulation	<a href="#">FyreFLEX Sealant and TWrap</a>  Max annular gap 5mm. Fill to full depth of board. Finish with 50x50mm fillet top side only.	600mm	
Data cables	Up to 20x CAT6	<a href="#">FyreFLEX Sealant and TWrap</a>  Max annular gap 5mm. Fill to full depth of board. Finish with 50x50mm fillet top side only.	300mm	<b>60mm</b> -/240/120  <b>Test report: FCO2586</b>
TPS Cables	Up to 20x Firesense-TPS 1.5mm <sup>2</sup>			

\* Loose TWRAP™/FyreWrap® infill material to be packed under the TWRAP™ for at least 300mm off the penetration.

Note that TWrap is required on the top side of the penetration only.

## FRLs - Electrical, data and communications cables

### Ceiling Penetrations



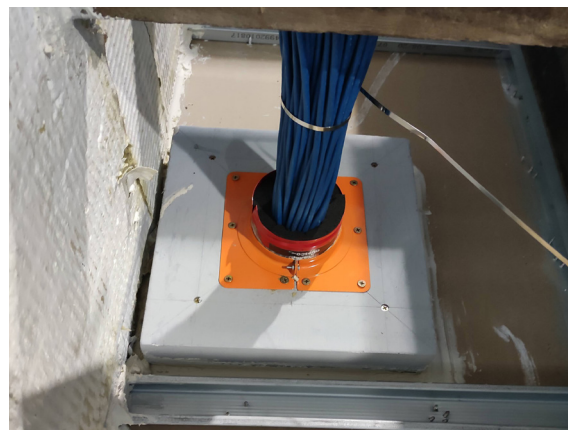
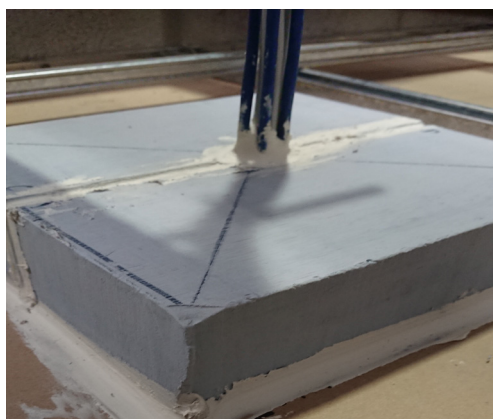
Service	Specification	Ceiling construction	System	TWrap	Max. FRL, RISF and Maxilite thickness
Cable trays upto 300mm	20 x CAT6, 10 x TPS, 7 x 3C&E Cable (19mm OD)	2 layer 13mm & 16mm FR Plasterboard	<a href="#">FyreFLEX Sealant and TWrap</a>  The maximum annular gaps between the cables and the Maxilite is 25mm.  Fill FyreFLEX Sealant to full depth of board and finish with 30x30mm fillet on bottom and top side of the Maxilite.	300mm	<b>60mm</b> -/60/60 60 minute RISF  <b>Test report:</b> <b>RTL FT1552.01</b>
Telecommunications Cable Bundles	3x CAT6 & 2 x TPS	2 layer 13mm & 16mm FR Plasterboard	<a href="#">FyreFLEX Sealant</a>  Cut a 32mm hole in the Maxilite. Fill FyreFLEX Sealant to full depth of board.	Wrap Free	<b>60mm</b> -/60/60 45 minute RISF  <b>Test report:</b> <b>RTL F47.01</b>
	8 x CAT6 & 5 x TPS	3 layer 16mm FR Plasterboard	<a href="#">FyreFLEX Sealant and TWrap</a>  Cut a 54mm hole in the Maxilite. Fill FyreFLEX Sealant to full depth of board and finish with 30x30mm fillet on bottom side of the Maxilite.	300mm	<b>60mm</b> -/120/120 60 minute RISF  <b>Test report:</b> <b>RTL FT1553.01</b>
	Up to 150 x CAT6 data	3 layer 16mm FR Plasterboard	<a href="#">FyreBOX Mini/Maxi and TWrap</a>  Annular gaps from 5-20mm. Fill to full depth of board with FyreFLEX sealant.	300mm	<b>60mm</b> -/120/120 60 minute RISF  <b>Test report:</b> <b>FC10266-01-4</b>
Large bundles and/or mixed services	All copper core cables (AS1530.4 appendix D1 and D2 cable sets) with cable trays up to 1000mm wide, PVC conduits, Fibre conduits, other pipe services etc.	3 layer 16mm FR Plasterboard	<a href="#">FyreBOX Mini/Maxi and TWrap</a>  Annular gaps from 5-20mm. Fill to full depth of board with FyreFLEX sealant.	300mm	<b>60mm</b> -/120/120 60 minute RISF  <b>Test report:</b> <b>FC10266-01-4</b>

## FRLs - Electrical, data and communications cables

### Ceiling Penetrations



Service	Specification	Ceiling construction	System	TWrap	Max. FRL, RISF and Maxilite thick-ness
Aluminium cables	Up to 4 x 240mm <sup>2</sup> single core + optional 120mm <sup>2</sup> earth cable	3 layer 16mm FR Plasterboard	<a href="#">FyreBOX Mini/Maxi and TWrap</a>  Annular gaps from 5-20mm. Fill to full depth of board with FyreFLEX sealant.	300mm	<b>60mm</b> -/120/120 60 minute RISF  <b>Test report: FC10266-01-4</b>
NBN Fibre optic cable	Up to 4 x 16mm <sup>2</sup> 4C + E				



## FRLs - Metal Pipes

### Walls Penetrations



Service	Size (up to)	System	TWrap	Max. FRL and Maxilite Thickness
Copper pipe	DN50	<a href="#">FyreFLEX Sealant and TWrap</a>  The annular gaps between the pipe and Maxilite is 5-20mm.  Fill FyreFLEX Sealant to full depth of board (60mm) and finish with 50x50mm fillet on both sides of the wall.	450mm	<b>60mm</b> -/180/120 <b>Test report: FCO2586</b>
	DN100		600mm	<b>60mm + 30mm patch</b> -/180/120 <b>Test report: FCO2586</b>
	DN150		1100mm + 300mm	
Steel Pipe	NB100		450mm	<b>60mm</b> -/180/120 <b>Test report: FCO2586</b>
	NB150		600mm	<b>60mm + 30mm patch</b> -/180/120 <b>Test report: FCO2586</b>
Copper pipe	DN32	<a href="#">FyreBOX Mini/Maxi and TWrap</a>  Annular gaps from 5-20mm. Fill to full depth of board with FyreFLEX sealant.	300mm	<b>60mm</b> -/120/120 <b>Test report: FC10266-01-4</b>
	DN50			
Steel Pipe	NB60			

## FRLs - Metal Pipes

### Floor Penetrations



Service	Size (up to)	System	TWrap	Max. FRL and Maxilite thickness
Copper Pipe	DN50	<a href="#">FyreFLEX Sealant and TWrap</a> Annular gaps form 5-20mm. Fill to full depth of board with FyreFLEX sealant. Finish with 50x50mm fillet on the top side of the Maxilite only.	600mm	<b>60mm</b> -/120/120
	DN100		800 + 300mm	<b>Test report: FCO2586</b>
	DN150		1500mm + 300mm	<b>60mm + 30mm patch</b> -/120/120 <b>Test report: FCO2586</b>
Steel Pipe	NB50	<a href="#">FyreBOX Mini/Maxi and TWrap</a> Annular gaps form 5-20mm. Fill to full depth of board with FyreFLEX sealant. Finish with 50x50mm fillet on the top side of the Maxilite only.	450mm	<b>60mm</b> -/120/120
	NB100		450mm	<b>Test report: FCO2586</b>
	NB150		900mm + 300mm	<b>60mm + 30mm patch</b> -/120/120 <b>Test report: FCO2586</b>
Copper Pipe	42mm OD	<a href="#">FyreBOX Mini/Maxi and TWrap</a> Annular gaps form 5-20mm. Fill to full depth of board with FyreFLEX sealant.	450mm	<b>60mm</b> -/120/120  <b>Test report: FC10266-01-4</b>
	100mm OD		600mm	
Steel Pipe	60mm OD		450mm	
	100mm OD		600mm	

## FRLs - Metal Pipes

### Ceiling Penetrations



Service	Size (up to)	Ceiling construction	System	TWrap	Max. FRL, RISF and Maxilite thickness
Copper pipe	DN50	3 layer 16mm FR Plasterboard	<a href="#">FyreFLEX Sealant and TWrap</a>  Cut a 76mm hole. Fill to full depth of board with FyreFLEX sealant. Finish with 30x30mm fillet on bottom of the Maxilite.	450mm	<b>60mm</b> -/120/120 60 minute RISF  <b>Test report: RTL FT1553.01</b>
Steel Pipe	NB100		<a href="#">FyreFLEX Sealant and TWrap</a>  Cut a 120mm hole. Fill to full depth of board with FyreFLEX sealant. Finish with 30x30mm fillet on bottom of the Maxilite.		
Copper pipe	DN42	3 layer 16mm FR Plasterboard	<a href="#">FyreBOX Mini/Maxi and TWrap</a>  Annular gaps from 5-20mm. Fill to full depth of board with FyreFLEX sealant.	300mm	<b>60mm</b> -/120/120  <b>Test report: FC10266-01-4</b>
	DN100			600mm	
Steel Pipe	NB50			300mm	
	NB100			600mm	

## FRLs - PEX Pipes

### Wall Penetrations



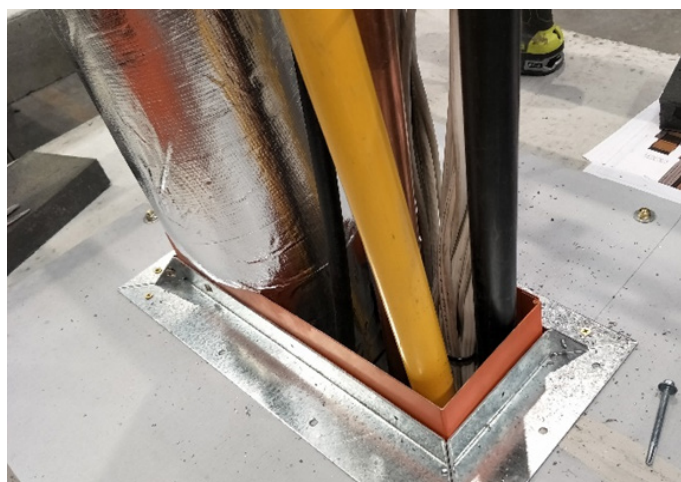
Service	Size (up to)	System	TWrap	Max. FRL and Maxilite thickness
PEX-a or PEX-b	20mm	<a href="#">FyreSHEATH &amp; FyrePEX HP sealant</a> 30mm opening with FyreSHEATH in-stalled to both sides of the penetration, backfilled with FyrePEX HP sealant.	Wrap Free	<b>60mm</b> -/120/120 <b>Test report: FCO2586</b>
PEX-AI-PEX	20mm			<b>120mm</b> -/120/120 <b>Test report: FAR4849</b>
	20mm			<b>60mm</b> -/120/30 <b>Test report: FCO2586</b>
Mixed PEX-a , PEX-b and PEX-AL-PEX pipes	20mm	<a href="#">FyreBOX Mini/Maxi and TWrap</a> Annular gaps from 5-20mm. Fill to full depth of board with FyreFLEX sealant.	300mm	<b>60mm</b> -/120/120 <b>Test report: FC10266-01-4</b>
	20-32mm		450mm	

## FRLs - PEX Pipes

### Floor Penetrations



Service	Size (up to)	System	TWrap	Max. FRL and Maxilite thickness
PEX-b	16mm	<a href="#">FyrePEX HP and TWrap</a> 50-60mm opening, filled to full depth of Maxilite from one side of the wall.	Wrap Free	<b>60mm</b> -/120/60 <b>Test report: FAR4849</b>
PEX-AL-PEX	16mm			
Mixed PEX-a, PEX-b and PEX-AL-PEX pipes	32mm	<a href="#">FyreBOX Mini/Maxi and TWrap</a> Annular gaps from 5-20mm. Fill to full depth of board with FyreFLEX sealant.	450mm	<b>60mm</b> -/120/120 <b>Test report: FC10266-01-4</b>



FRLs - PEX Pipes

Ceiling Penetrations



Service	Size (up to)	System	TWrap	Max. FRL and Maxilite thickness
Mixed PEX-a, PEX-b and PEX-AL-PEX pipes	32mm	<a href="#">FyreBOX Mini/Maxi and TWrap</a>  Annular gaps from 5-20mm. Fill to full depth of board with FyreFLEX sealant.	300mm	<b>60mm</b> -/120/120 60 minutes RISF  <b>Test report: FC10266-01-4</b>



## FRLs - PVC Conduits

### Wall Penetrations



Service	Size (up to)	System	TWrap	Max. FRL and Maxilite thickness
PVC conduit	Up to 25mm PVC conduit*	<a href="#">FyrePEX HP and TWrap</a> 50-60mm opening and fill to full depth of board on both sides of the wall.	Wrap Free	<b>60mm</b> -/180/180 <b>Test report: FAR4849</b>
	Up to 80mm PVC conduit*	<a href="#">FyreCOLLAR and FyreFLEX Sealant</a> Max annular gap 5mm, filled with FyreFLEX sealant to the full depth of board and collars fixed on both sides of the board.		<b>60mm</b> -/120/120 <b>Test report: FC11190</b>
	Up to 32mm PVC conduit and other mixed services*	<a href="#">FyreBOX Mini/Maxi and TWrap</a> Annular gaps from 5-20mm. Fill to full depth of board with FyreFLEX sealant.	300mm	<b>60mm</b> -/120/120 <b>Test report: FC10266</b>

\* The conduits may contain any combination of the following up to the maximum that can be accommodated; 2C & E 2.5mm<sup>2</sup> TPS cable, CAT5/CAT6 data cables, 3C & E PVC sheathed power cables up to 19 mm diameter or fiber optic cables.

## FRLs - PVC Conduits

### Floor Penetrations



Service	Size (up to)	System	TWrap	Max. FRL and Maxilite thickness
PVC conduit	Up to 25mm PVC conduit*	<a href="#">FyrePEX HP and TWrap</a> 50-60mm opening and fill to full depth of board	Wrap Free	<b>60mm</b> -/240/240 <b>Test report: FAR4849</b>
	Up to 80mm PVC conduit*	<a href="#">FyreCOLLAR and FyreFLEX Sealant</a>		<b>60mm</b> -/120/120 <b>Test report: FC11190</b>
	Up to 32mm PVC conduit and other mixed services*	<a href="#">FyreBOX Mini/Maxi and TWrap</a> Annular gaps from 5-20mm. Fill to full depth of board with FyreFLEX sealant.	300mm	<b>60mm</b> -/120/120 <b>Test report: FC10266-01-4</b>

\* The conduits may contain any combination of the following up to the maximum that can be accommodated; 2C & E 2.5mm<sup>2</sup> TPS cable, CAT5/CAT6 data cables, 3C & E PVC sheathed power cables up to 19 mm diameter or fiber optic cables.

## FRLs - PVC Conduits

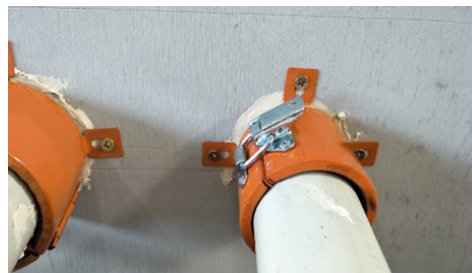
### Ceiling Penetrations



Service	Size	Ceiling construction	System	TWrap	Max. FRL, RISF and Maxilite thickness
PVC conduit	25mm PVC conduit	2 layer 13mm & 16mm FR Plasterboard	<a href="#">FyreCOLLAR and FyreFLEX Sealant</a>  32mm opening, filled with FyreFLEX sealant to the full depth of board and collars fixed on both sides of the board.	Wrap Free	<b>60mm</b> -/60/60 45 minute RISF  <b>Test report: RTL TR-47.01</b>
	25mm PVC conduit	2 layer 13mm & 16mm FR Plasterboard	<a href="#">FyreCOLLAR and FyreFLEX Sealant</a>  25mm opening, filled with FyreFLEX sealant to the full depth of board and collars fixed on both sides of the board.		<b>60mm</b> -/60/60 60 minute RISF  <b>Test report: RTL FT1552.01</b>
	25mm PVC conduit	3 layer 16mm FR Plasterboard	<a href="#">FyreCOLLAR and FyreFLEX Sealant</a>  32mm opening, filled with FyreFLEX sealant to the full depth of board and collars fixed on both sides of the board.		<b>60mm</b> -/120/120 60 minute RISF  <b>Test report: RTL FT1553.01</b>
	32mm conduit	3 layer 16mm FR Plasterboard	<a href="#">FyreBOX Mini/Maxi and TWrap</a>  Annular gaps from 5-20mm. Fill to full depth of board with FyreFLEX sealant.	300mm	<b>60mm</b> -/120/120 60 minutes RISF  <b>Test report: FC10266-01-4</b>

## FRLs - PVC Pipes

### Wall Penetrations



Service	Size (up to)	System	TWrap	Max. FRL and Maxilite thickness
PVC Pipes	80mm	<a href="#">FyreCOLLAR and FyreFLEX Sealant</a> Max annular gap 5mm, filled with FyreFLEX sealant to the full depth of board and collars fixed on both sides of the board.	Wrap Free	<b>60mm</b> -/120/120 <b>Test report: FC11190</b>
	100mm			<b>60mm + 30mm patch</b> -/120/120 <b>Test report: FC11190</b>
	100mm			<b>60mm</b> -/90/90 <b>Test report: FP6251</b>

## FRLs - PVC Pipes

### Floor Penetrations



Service	Size (up to)	System	TWrap	Max. FRL and Maxilite thickness
PVC Pipes	80mm	<a href="#">FyreCOLLAR and FyreFLEX Sealant</a> Max annular gap 5mm, filled with FyreFLEX sealant to the full depth of board and collars fixed on both sides of the board.	Wrap Free	<b>60mm</b> -/120/120 <b>Test report: FC11190</b>
	100mm			<b>60mm + 30mm patch</b> -/120/120 <b>Test report: FC11190</b>
	80mm	<a href="#">FyreBOX Mini/Maxi and TWrap</a> Annular gaps from 5-20mm. Fill to full depth of board with FyreFLEX sealant.	300mm	<b>60mm</b> -/120/120 <b>Test report: FC10266-01-4</b>

## FRLs - PVC Pipes

### Ceiling Penetrations



Service	Size (up to)	Ceiling construction	System	TWrap	Max. FRL, RISF and Maxilite thickness
PVC Pipes	100mm	2 layer 13mm & 16mm FR Plasterboard	<a href="#">FyreCOLLAR and FyreFLEX Sealant</a>	Wrap Free	<b>60mm</b> -/60/60 60 minute RISF <b>Test report: RTL FT1552.01</b>
		3 layer 16mm FR Plasterboard	111mm opening, filled with FyreFLEX sealant to the full depth of board and collars fixed on the underside of the board.		<b>60mm</b> -/120/120 60 minute RISF <b>Test report: RTL FT1553.01</b>
	80mm	3 layer 16mm FR Plasterboard	<a href="#">FyreBOX Mini/Maxi and TWrap</a> Annular gaps from 5-20mm. Fill to full depth of board with FyreFLEX sealant.	300mm	<b>60mm</b> -/120/120 60 minutes RISF <b>Test report: FC10266-01-4</b>

## FRLs - HVAC&R

### Wall Penetrations



Service	Size (up to)	System	TWrap	Max. FRL and Maxilite Thickness
Pair coil bundles	Single pair coil bundle* with FR insulation up to 20mm	<a href="#">FyrePEX HP and TWrap</a>  110mm opening filled to full depth of Maxilite board. Apply 30x30mm fillet on both sides of the wall.	Wrap Free	<b>60mm</b> -/120/60  <b>Test report: FAR 4849</b>
	Up to 3x pair coil bundles with FR insulation up to 25mm thick, and 2x cables per pair coil (power/data)	<a href="#">FyreCOLLAR and FyreFLEX Sealant</a>  Max annular gap 5mm, filled with FyreFLEX sealant to the full depth of board on both sides of the wall.	300mm	<b>60mm</b> -/120/120  <b>Test report: FAR 4849</b>
				<b>90mm</b> -/120/120  <b>Test report: FC11190</b>
Pair coil, other CHW pipe and mixed services	Pair coil bundle* with FR insulation up to 20mm	<a href="#">FyreBOX Mini/Maxi and TWrap</a>  Annular gaps from 5-20mm. Fill to full depth of board with FyreFLEX sealant.		
	Pair coil bundle* with PE insulation up to 13mm			
	DN50 copper with PE insulation up to 20mm thick			
	DN50 copper with FR insulation			
	DN20 copper with rockwool-type insulation up to 38mm			

\*A/C bundle to consist of two insulated copper pipes (pair coil) with or without: power cables up to 12mm OD, data cables up to 6mm OD and one flexible or rigid PVC drain up to 20mm OD.

## FRLs - HVAC&R

### Floor Penetrations



Service	Size (up to)	System	TWrap	Max. FRL and Maxilite Thickness
Pair coil bundles	Single pair coil bundle* with FR insulation up to 20mm	<a href="#">FyrePEX HP and TWrap</a> 110mm opening filled to full depth of Maxilite board. Apply 30x30mm fillet on top side of the floor.	Wrap Free	<b>60mm</b> -/120/60 <b>Test report: FAR 4849</b>
			300mm	<b>120mm</b> -/120/120 <b>Test report: FAR 4849</b>
	Up to 3x pair coil bundles with FR insulation up to 25mm thick, and 2x cables per pair coil (power/data)	<a href="#">FyreCOLLAR and FyreFLEX Sealant</a> Max annular gap 5mm, filled with FyreFLEX sealant to the full depth of board on top side of the floor.	300mm	<b>60mm + 30mm patch</b> -/120/120 <b>Test report: FC11190</b>
Pair coil, other CHW pipe and mixed services	Pair coil bundle* with FR insulation up to 20mm	<a href="#">FyreBOX Mini/Maxi and TWrap</a> Annular gaps from 5-20mm. Fill to full depth of board with FyreFLEX sealant.	300mm	<b>60mm</b> -/120/120 <b>Test report: FC10266-01-4</b>
	Pair coil bundle* with PE insulation up to 13mm			
	DN50 Stainless steel pipe with EPS or PE insulation and rockwool up to 20mm thick			
	DN50 copper with PE insulation up to 20mm thick			

\*A/C bundle to consist of two insulated copper pipes (pair coil) with or without: power cables up to 12mm OD, data cables up to 6mm OD and one flexible or rigid PVC drain up to 20mm OD

## FRLs - HVAC&R

### Ceiling Penetrations



Service	Size (up to)	Ceiling construction	System	TWrap	Max. FRL and Maxilite Thickness
Pair coil bundles	Single pair coil bundle with 20mm FR insulation*	2 layer 13mm & 16mm FR Plasterboard	<a href="#">FyreCOLLAR and FyreFLEX Sealant</a>  90mm opening filled to full depth of Maxilite board.	300mm	<b>60mm</b> (White/ blue) -/60/60 60 minute RISF  <b>Test report: RTL FT1552.01</b>
	Single pair coil bundle*	3 layer 16mm FR Plasterboard	<a href="#">FyreCOLLAR and FyreFLEX Sealant</a>  54mm opening filled to a 10mm depth of Maxilite board.	300mm	<b>60mm</b> (White/ blue) -/120/120 60 minute RISF  <b>Test report: RTL FT1553.01</b>
	Pair coil bundle* with FR in-sulation up to 20mm	3 layer 16mm FR Plasterboard	<a href="#">FyreBOX Mini/Maxi and TWrap</a>  Annular gaps from 5-20mm. Fill to full depth of board with FyreFLEX sealant.	300mm	<b>60mm</b> (White/ blue) -/120/120  <b>Test report: FC10266-01-4</b>
	Pair coil bundle* with PE in-sulation up to 13mm				
	DN50 Stainless steel pipe with EPS or PE insulation and rockwool				
	DN50 copper with FR insulation				

\*A/C bundle to consist of two insulated copper pipes (pair coil) with or without: power cables up to 12mm OD, data cables up to 6mm OD and one flexible or rigid PVC drain up to 20mm OD

FRLs - Steel Threaded Rod

Floor Penetrations



Service	Size	Fire Stopping	TWRAP	Max FRL
Steel Threaded Rod	10mm	<a href="#">FyreFLEX Sealant and TWrap</a> Max annular gap 5mm. Fill FyreFLEX sealant to the full depth of board with 30 x 30mm fillet on the top side	300mm	<b>60mm</b> (White/blue) -/180/180 <b>Test Report: FRT190292</b>

# INSTALLATION

## Maxilite for Penetrations

Maxilite penetration systems will only be compliant if they are installed exactly how they have been tested, otherwise the FRL performance can't be confirmed. It is important that the following installation instructions are followed closely.

### STEP 1 PREPARE THE OPENING



For plasterboard walls, the opening (or aperture) is required to be lined with stud framing and strips of plasterboard inside the opening.

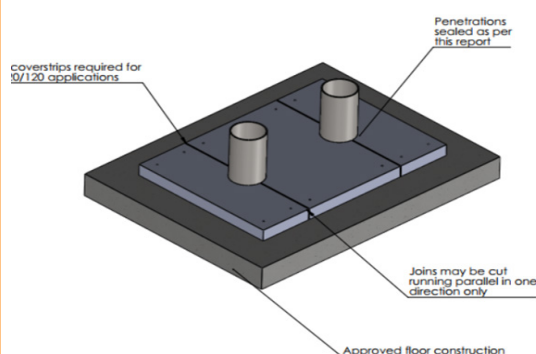
For AAC panel walls, these may require additional steel framing as per wall manufacturers recommendations.

### STEP 2 - PREPARE THE BOARD



Measure the existing opening and check that it is within the approved Maxilite range. Include the required 100mm overlap onto at least 3x sides of the penetration (4th side may be installed hard against a wall).

### STEP 3 - BUTT JOINTS



Maxilite can be cut into pieces and retro-fitted around existing services. For multiple layers of Maxilite, joints in each layer should all run in the same direction (parallel).

### STEP 4 - CUT THE BOARD



Using a hand saw, jig saw or reciprocating saw, cut the Maxilite board to the required size. It can be installed in various sections around existing services. Leave an annular gap around each service (refer to FRL tables above for maximum annular gaps).

**Cover strips are not required for butt joints in the Maxilite board**

# INSTALLATION

## Maxilite for Penetrations



### STEP 5- FIXINGS



Fix the Maxilite to the wall or floor. These are to be installed 50mm from the edges of the Maxilite board and located at 400mm centers for concrete/masonry walls, or 200mm centers for other walls.

Refer to fixings listed on page [6-7](#).



### STEP 6 SEAL



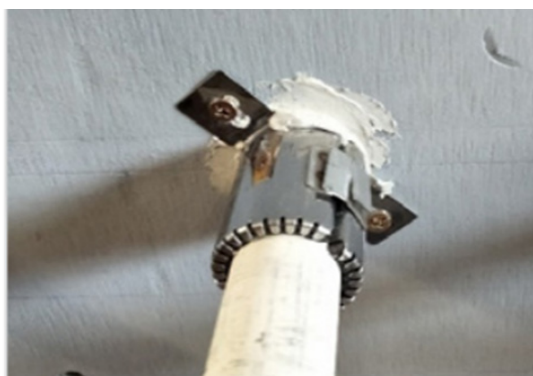
Seal any butt joints with FyreFLEX sealant, and apply FyreFLEX sealant to the perimeter of the board with a 10x10mm fillet.

Note that there is no need to seal screw heads

*There is a wide range of fire stopping systems approved in Maxilite for all service types, refer to the approvals tables for details.*



### STEP 7 FIRE STOP SYSTEM



Install fire stopping product required for the service as listed in the FRL tables above.

(e.g. for metal pipes, seal with FyreFLEX sealant and wrap with TWrap, for plastic pipes install a FyreCOLLAR, or FyrePEX HP sealant etc.)



### STEP 8 WRAP (SYSTEM SPECIFIC)



Where required, wrap the services with TWrap with a 50mm overlap, and strap in place with 4.6mm steel cable ties 50mm from each end, and 150mm centers in-between.

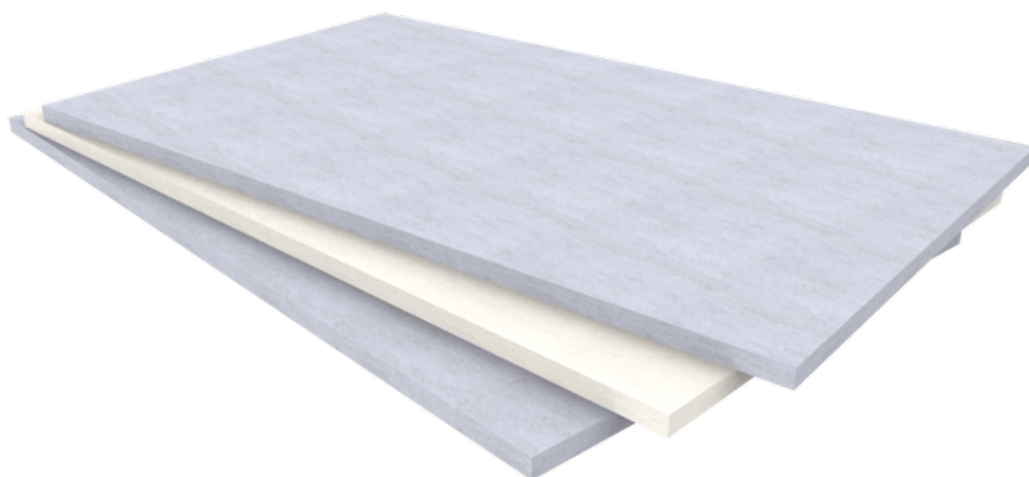
Refer to FRL tables above for the correct length of TWrap required for your service penetration.

# PRODUCT RANGE

## FyreBOARD MAXILITE

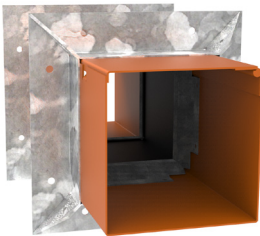
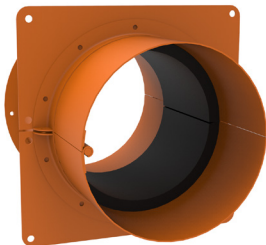


Item number	Description	Min Order Qty	Pallet Qty	Weight Per Board
Maxilite White 30	Maxilite board 1525x1000x30 mm (white)	1x	30	16kg
Maxilite White 40	Maxilite board 1525x1000x40 mm (white)	1x	22	22kg
Maxilite White 60	Maxilite board 1525x1000x60 mm (white)	1x	12	32kg
Maxilite Blue 30	Maxilite board 2040x1220x30 mm (blue)	1x	35	23kg
Maxilite Blue 40	Maxilite board 2040x1220x40 mm (blue)	1x	23	30kg
Maxilite Blue 60	Maxilite board 2040x1220x60 mm (blue)	1x	17	45kg
Maxilite Half White 30	Maxilite board 1018x1220x30 mm (white)	1x	39	11.5kg
Maxilite Half White 40	Maxilite board 1018x1220x40 mm (white)	1x	10	15kg
Maxilite Half White 60	Maxilite board 1018x1220x60 mm (white)	1x	29	22.5kg
Maxilite Half Blue 30	Maxilite board 1018x1220x30 mm (blue)	1x	61	11.5kg
Maxilite Half Blue 40	Maxilite board 1018x1220x40 mm (blue)	1x	74	15kg
Maxilite Half Blue 60	Maxilite board 1018x1220x60 mm (blue)	1x	34	22.5kg
Maxilite Quarter White 40	Maxilite board 790 x497x 40mm (white)	1x	20	5kg
Maxilite Quarter White 60	Maxilite board 790 x497x60mm (white)	1x	20	7.5kg
Maxilite Quarter Blue 40	Maxilite board 790 x497x 40mm (blue)	1x	20	5kg
Maxilite Quarter Blue 60	Maxilite board 790 x497x 60mm (blue)	1x	20	7.5kg



SYSTEM RANGE  
RELATED SERVICES

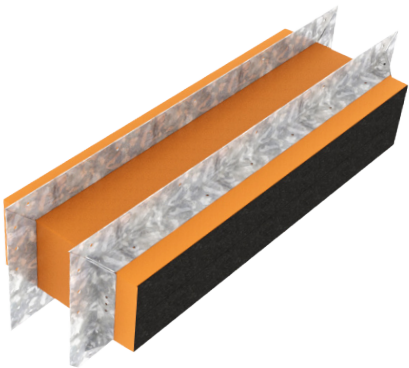
FyreBOX MINI  
& FyreFLANGE



Type	Item Number	Dimensions W x H x D or Diam	Dimensions
Square	FYREBOX-MS-65	65 x 65 x 250mm	
	FYREBOX-MS-100	100 x 100 x 250mm	
Round	FYREBOX-MR-50	50 x 250mm	
	FYREBOX-MR-100	100 x 250mm	
	FYREBOX-MR-150	150 x 250mm	

PRODUCT RANGE  
RELATED SERVICES

FyreBOXMAXI  
& FyreFLANGE



Item Number	Description	Dimensions
FYREBOX-MAXI-350	350 x 125 x 250mm	
FYREBOX-MAXI-550	550 x 125 x 250mm	
FYREBOX-MAXI-650	650 x 125 x 250mm	
FYREBOX-MAXI-750	750 x 125 x 250mm	
FYREBOX-MAXI-1100	1100 x 125 x 250mm	
FYREBOX-MAXI-Custom	Any depth X 125 X Any length up to 1250mm	

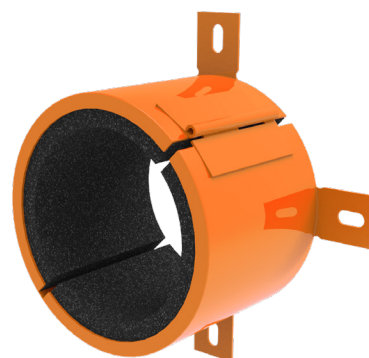
## SYSTEM RANGE RELATED SERVICES

### FyreCOLLAR CONDUIT



Item Number	Collar Size	To Suit Nominal Service Size	Inner Diameter	Outer Diameter	Height	Min Order Qty
FyreCOLLAR-CC-25	25mm	25mm	26mm	36mm	50mm	1
FyreCOLLAR-CC-32	32mm	32mm	33mm	44mm	50mm	1
FyreCOLLAR-CC-40	40mm	40mm	43mm	48mm	50mm	1

### FyreCOLLAR PREMIUM RETROFIT



Item Number	Collar Size	To Suit Nominal Service Size	Inner Diameter	Outer Diameter	Height	Min Order Qty
FyreCOLLAR-PHRC-50	50mm	50mm	58mm	72mm	62mm	1
FyreCOLLAR-PHRC-65	65mm	65mm	72mm	90mm	62mm	1
FyreCOLLAR-PHRC-80	80mm	80mm	85mm	102mm	62mm	1
FyreCOLLAR-PHRC-100	100mm	100mm	115mm	133mm	62mm	1
FyreCOLLAR-PHRC-130	130mm	100mm Elbow/socket	130mm	155mm	62mm	1
FyreCOLLAR-PHRC-150	150mm	150mm	160mm	200mm	62mm	1

## SYSTEM RANGE RELATED SERVICES




Item number	Description	Min Order Qty	Pallet Qty
FyreFLEX 300W FyreFLEX 300G	FyreFLEX® Sealant Cartridge 300ml White or Grey	1	1920
FyreFLEX 600W FyreFLEX 600G	FyreFLEX® Sealant Sausage 600ml White or Grey	1	1040
FyreFLEX 10G	FyreFLEX® Sealant Pail 10L Grey	1x	64




Item Number	Description	Min Order Qty	Pallet QTY
TWRAP 300*	300mm wide, 25mm thick blanket	7620mm long roll	24
TWRAP 450*	450mm wide, 25mm thick blanket	7620mm long roll	12
TWRAP 600*	600mm wide, 25mm thick blanket	7620mm long roll	12
Tape	Foil tape, 95mm wide, 50m roll	1	N/A
Cable Tie SS 12 x 521	4.6mm wide x 521mm long	25	N/A
Cable Tie SS 12 x 910	4.6mm wide x 910mm long	25	N/A

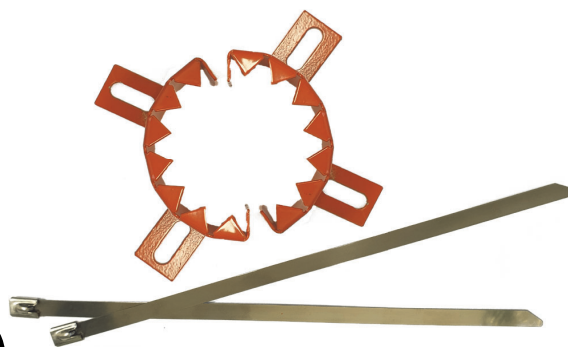
\* FyreWrap® can be substituted for TWRAP™

## SYSTEM RANGE

### RELATED SERVICES




Item number	Description	Min Order Qty	Pallet Qty
FyrePEX HP310	FyrePEX HP Intumescent	25	1600

Ensures visible compliance | Reduces FyrePEX™ HP wastage

Item number	Size	Kit	Min Order Qty
FyrePEX Sheath 50mm Set	50mm	2 Sheaths (4 Halves) 2 x SS Cable Ties	1
FyrePEX Sheath 65mm Set	65mm	2 Sheaths (4 Halves) 2 x SS Cable Ties	1

# FAQ?

## Q Can I use thinner Maxilite boards for penetrations?

**A** The minimum Maxilite thickness for penetrations is 60mm, however you can make up this thickness with 2x30mm boards for example.

## Q Can I paint over Maxilite?

**A** Yes, it is possible to paint over the board. Maxilite is porous so multiple coats are recommended.

## Q Can I install a FyreSHIELD access panel into a 60mm Maxilite?

**A** We do not have a tested system containing a FyreSHIELD access panel in Maxilite.

## Q I have a 2-hour rated wall, can I use a 60mm Maxilite to achieve a 4-hour rating?

**A** The FRL will be limited to the system and therefore would only achieve-/120/120 in this instance.

## Q I require a large FyreBOX Maxi installed into an oversize opening. Can I install this into the Maxilite?

**A** When using Maxilite board, the largest approved FyreBOX is one 1100x125mm as long as the board is designed as per this manual to handle the weight of the FyreBOX Maxi. Refer to page 10.

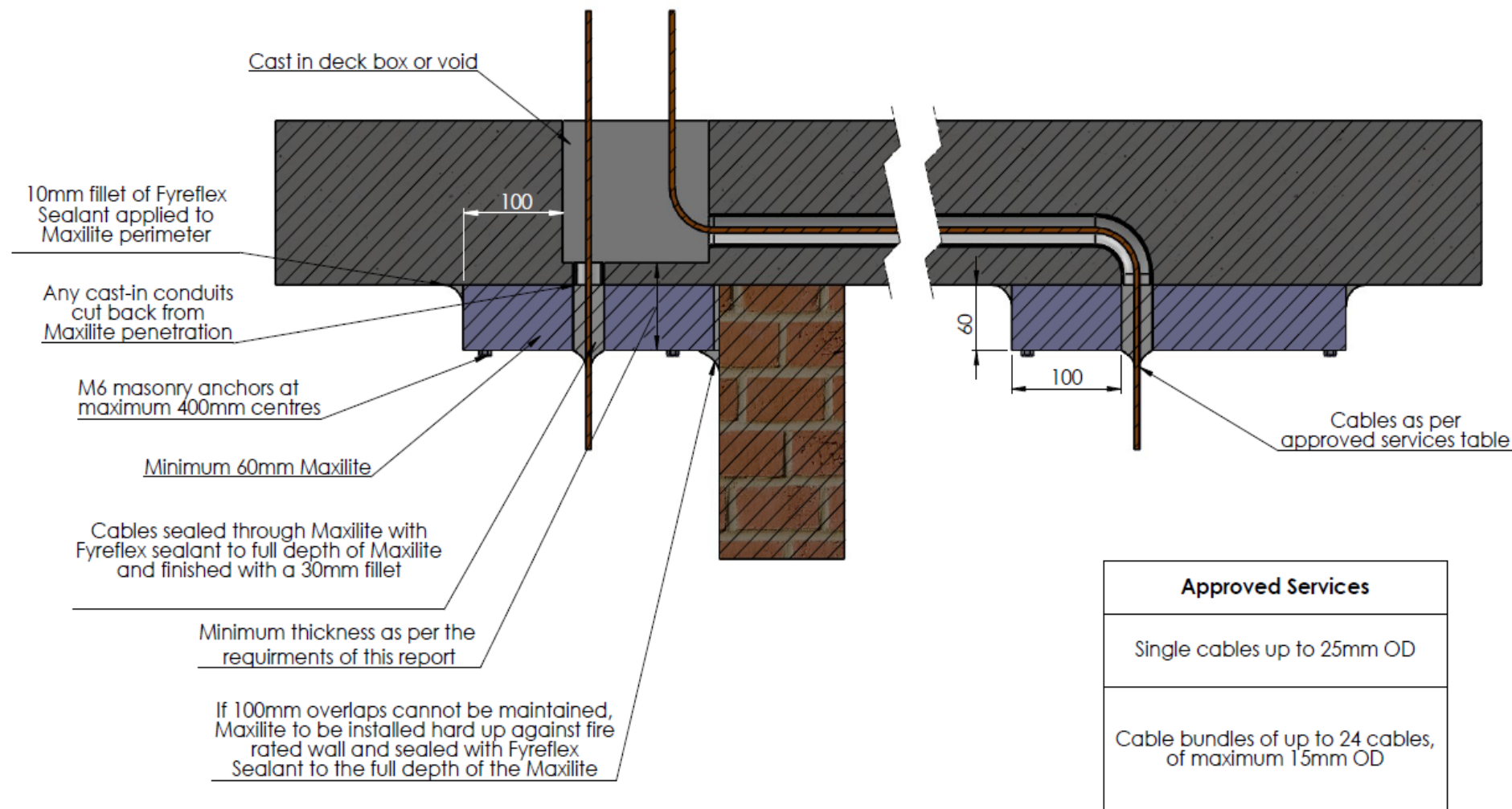
## Q Can I build bulkheads or box-outs?

**A** Yes, refer to [FyreBOARD Maxilite Bulkheads and Ceilings Technical Manual](#).

## SOCIAL MEDIA



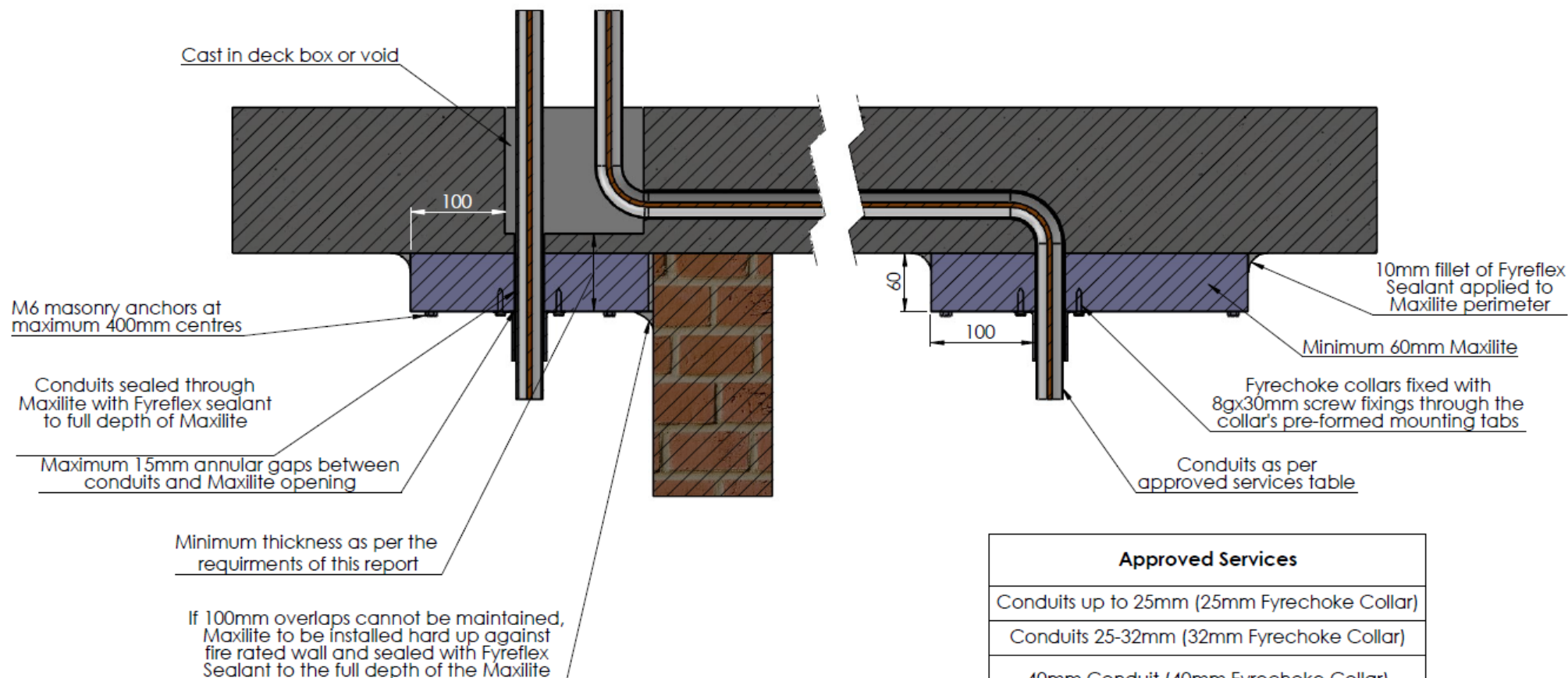

# -/120/120



## Notes:

- Maximum annular gaps around cable services 20mm (ie. 20mm cable will require a max. 60mm opening)
- Sealant installed to full depth of Maxilite
- FRL of floor slab is maintained in regards to insulation performance only, structural adequacy to be confirmed by others

## -/120/120

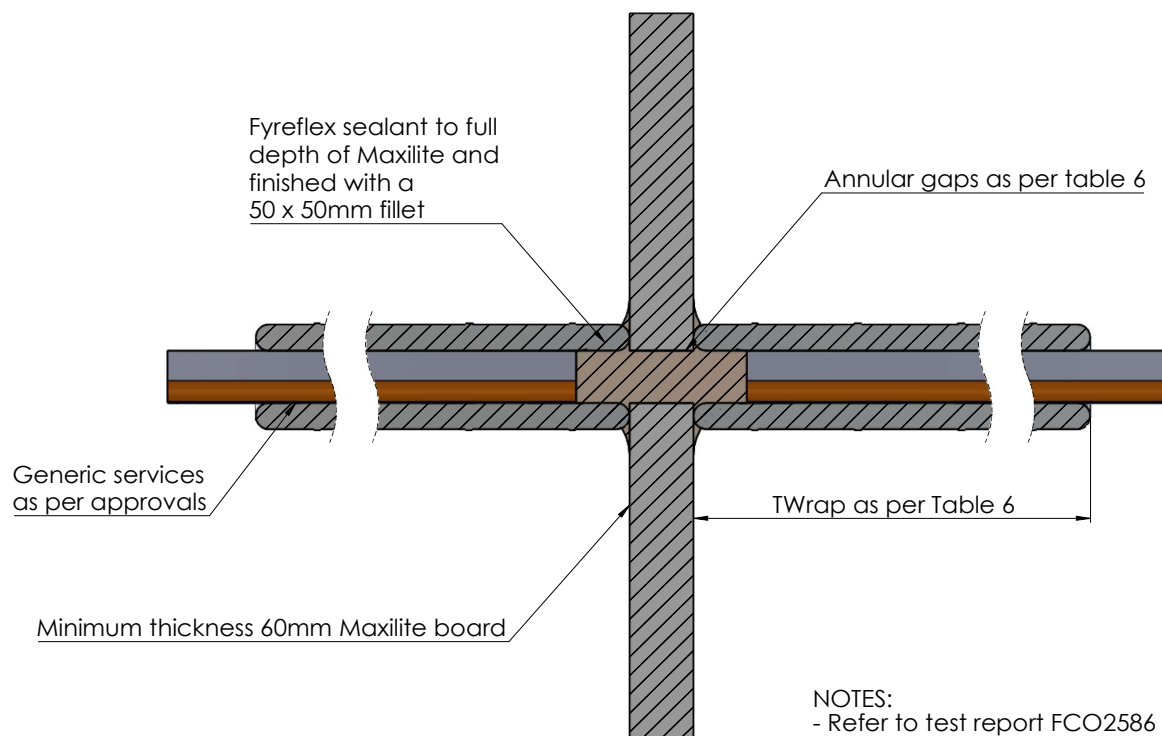


### Notes:

- Fyrechoke collars installed as per approvals
- Conduits installed empty or with cables (including NBN fiber)
- FRL of floor slab is maintained in regards to insulation performance only, structural adequacy to be confirmed by others

### Approved Services

Conduits up to 25mm (25mm Fyrechoke Collar)
Conduits 25-32mm (32mm Fyrechoke Collar)
40mm Conduit (40mm Fyrechoke Collar)
50mm conduit (50mm Fyrechoke Collar)



**Drawing Name:** Maxilite service penetration

**Test Standard:**  
AS1530.4

**Codes:**

**Revision:**

**Date:**

**No.:**

**NOTICE:**

**Project Title:** Maxilite - Generic Install

**Fire resistance level:**

**Drawn By:**  
MP

NOTE: ALL DIMENSIONS ARE IN MILLIMETRES (mm)

**Drawing No. :**  
1

**Sheet:**  
1 of 9

**Date:**  
17/01/2023

**Scale:**

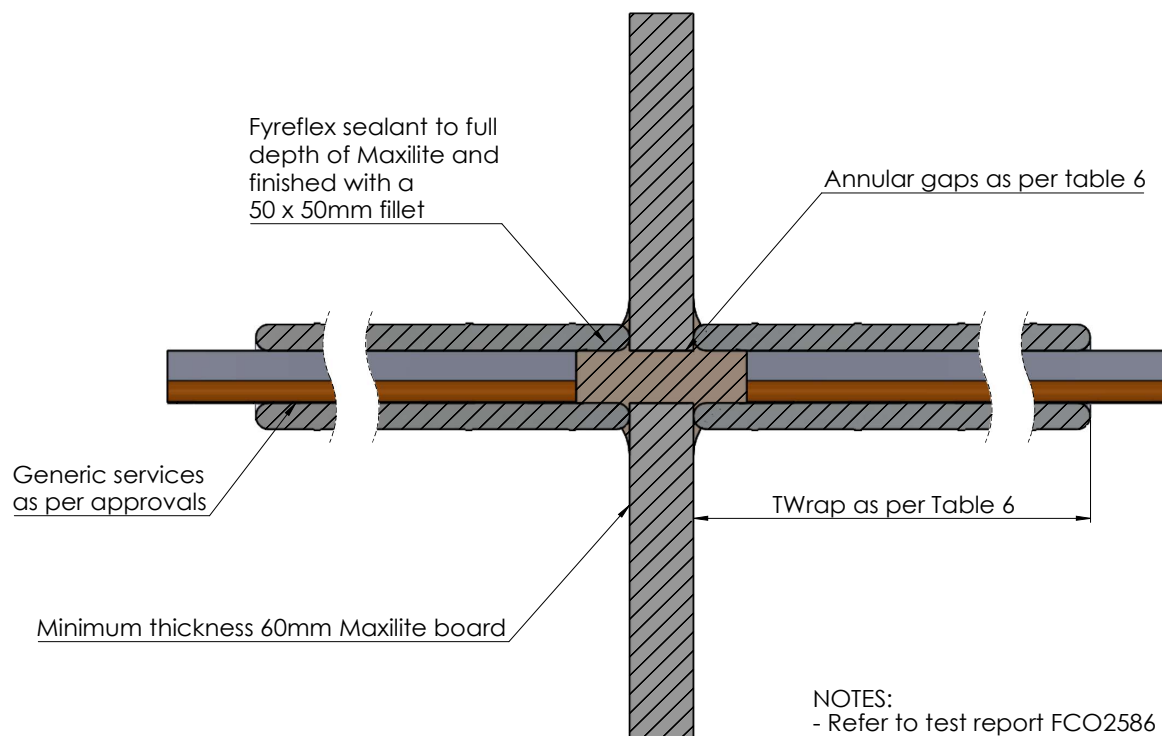
**Based on Report No.:**

**Checked By:**  
JH

☐ STANDARD DRAWING  
☐ PROJECT DRAWING



**Trafalgar Head Office:**  
PO BOX 545  
Chester Hill NSW 2162  
T: 1800 888 714  
F: 1800 201 500  
E: info@tfire.com.au  
W: www.tfire.com.au


**Drawing Name:** Maxilite service penetration

**Test Standard:**  
AS1530.4

**Codes:**
**Revision:**
**Date:**
**No.:**
**NOTICE:**
**Project Title:** Maxilite - Generic Install

**Fire resistance level:**
**Drawn By:**  
MP

NOTE: ALL DIMENSIONS ARE IN MILLIMETRES (mm)
**Drawing No. :**  
1

**Sheet:**  
1 of 9

**Date:**  
17/01/2023

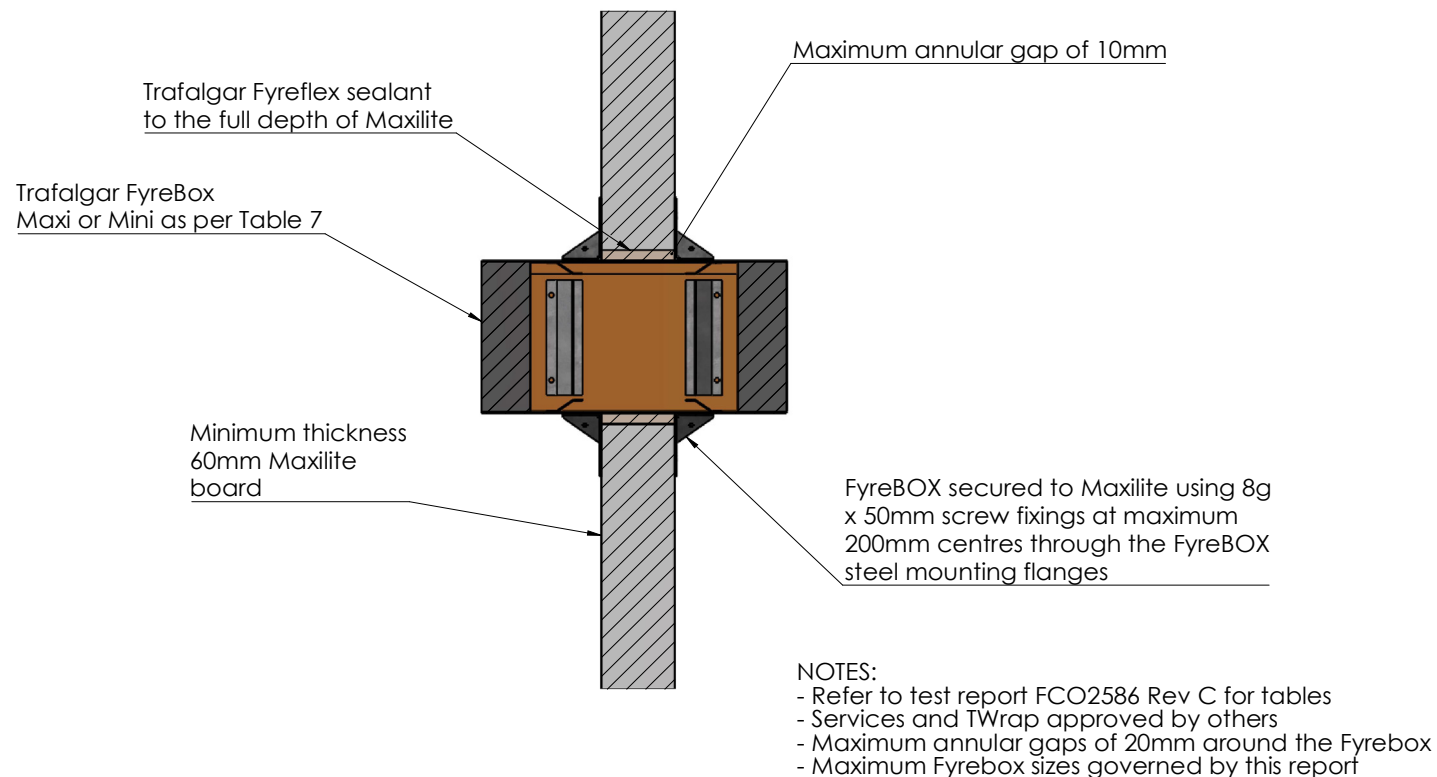
**Scale:**
**Based on Report No.:**
**Checked By:**  
JH

☐ STANDARD DRAWING  
☐ PROJECT DRAWING

**Trafalgar Head Office:**  
 PO BOX 545  
 Chester Hill NSW 2162  
 T: 1800 888 714  
 F: 1800 201 500  
 E: info@tfire.com.au  
 W: www.tfire.com.au



**Trafalgar Head Office**  
PO BOX 545  
Chester Hill NSW 2161  
T: 1800 888 714  
F: 1800 201 500  
E: [info@tfire.com.au](mailto:info@tfire.com.au)  
W: [www.tfire.com.au](http://www.tfire.com.au)



**Drawing Name:** FyreBOX vertical penetration

**Test Standard:**  
AS1530.4

**Codes:**

**Revision:**

**Date:**

**No.:**

**NOTICE:**

**Project Title:** Maxilite - Generic Install

**Fire resistance level:**

**Drawn By:**  
MP

**Drawing No. :**  
3

**Sheet:**  
3 of 9

**Date:**  
17/01/2023

**Scale:**

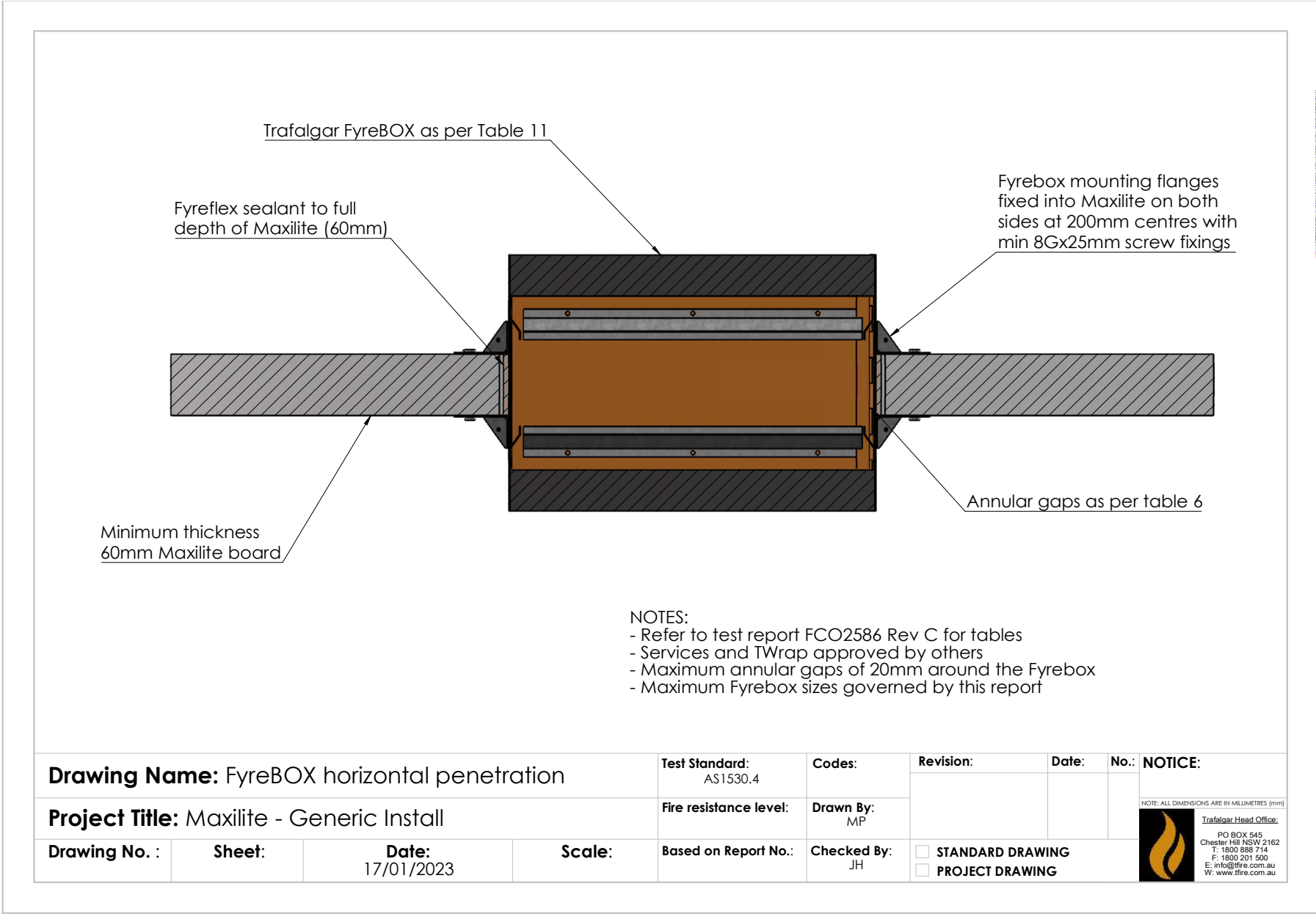
**Based on Report No.:**

**Checked By:**  
JH

☐ STANDARD DRAWING  
☐ PROJECT DRAWING

NOTE: ALL DIMENSIONS ARE IN MILLIMETRES (mm)

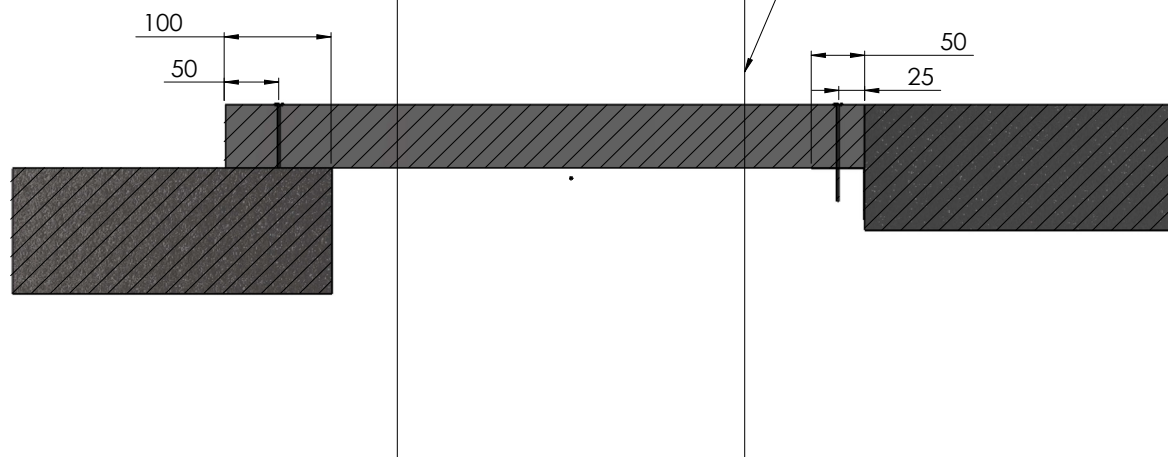
**Trafalgar Head Office:**  
PO BOX 545  
Chester Hill NSW 2162  
T: 1800 888 714  
F: 1800 201 500  
E: info@tfire.com.au  
W: www.tfire.com.au



For 'face-fix' with overlap, penetrations can be 100mm in from the edge of the Maxilite (so as not to hit the concrete).

Penetration Zone

For 'flush-fit' installations with a steel angle, penetrations can be 50mm in from the edge of the Maxilite (so as not to hit the angle).



**Drawing Name:** Penetration zone

**Test Standard:**  
AS1530.4

**Codes:**

**Revision:**

**Date:**

**No.:**

**NOTICE:**

**Project Title:** Maxilite - Generic Install

**Fire resistance level:**

**Drawn By:**  
MP

NOTE: ALL DIMENSIONS ARE IN MILLIMETRES (mm)

**Drawing No. :**  
5

**Sheet:**  
5 of 9

**Date:**  
17/01/2023

**Scale:**  
NTS

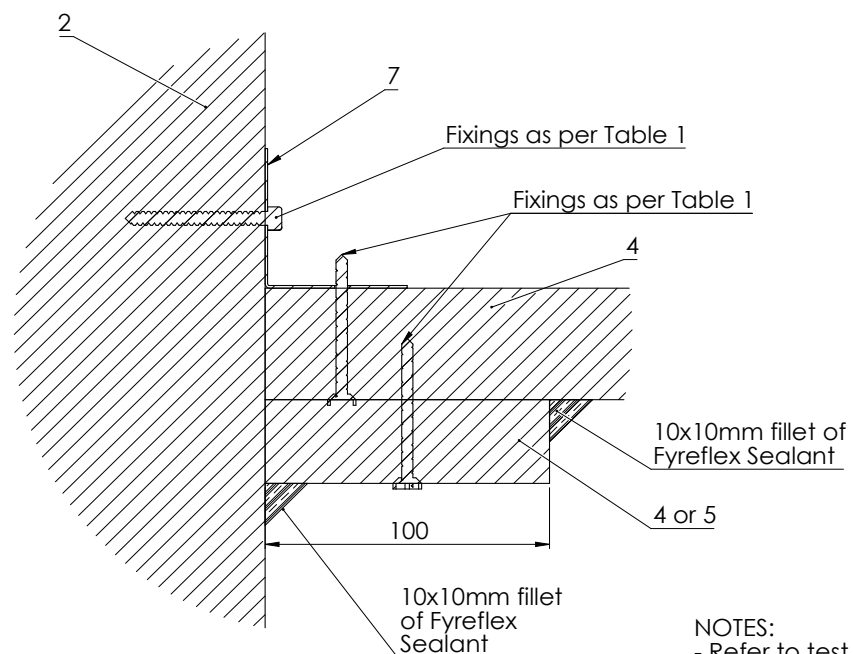
**Based on Report No.:**

**Checked By:**  
JH

☐ STANDARD DRAWING  
☐ PROJECT DRAWING



**Trafalgar Head Office:**  
PO BOX 545  
Chester Hill NSW 2162  
T: 1800 888 714  
F: 1800 201 500  
E: technical@tgroup.com.au  
W: www.tfire.com.au



NOTES:  
- Refer to test report FCO2586 Rev C for tables

**Drawing Name:** Maxilite butting to slab

**Test Standard:**  
AS1530.4

**Codes:**

**Revision:**

**Date:**

**No.:**

**NOTICE:**

**Project Title:** Maxilite - Generic Install

**Fire resistance level:**

**Drawn By:**  
MP

NOTE: ALL DIMENSIONS ARE IN MILLIMETRES (mm)

**Drawing No. :**  
11

**Sheet:**  
11 of 13

**Date:**  
17/01/2023

**Scale:**

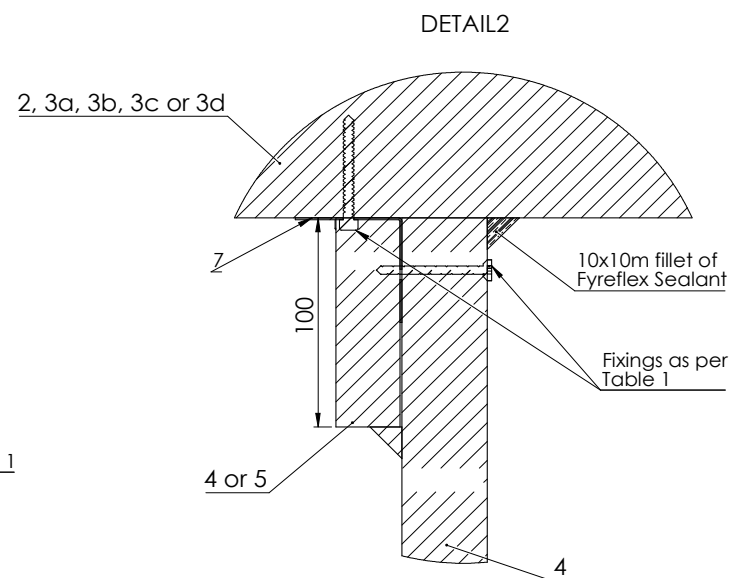
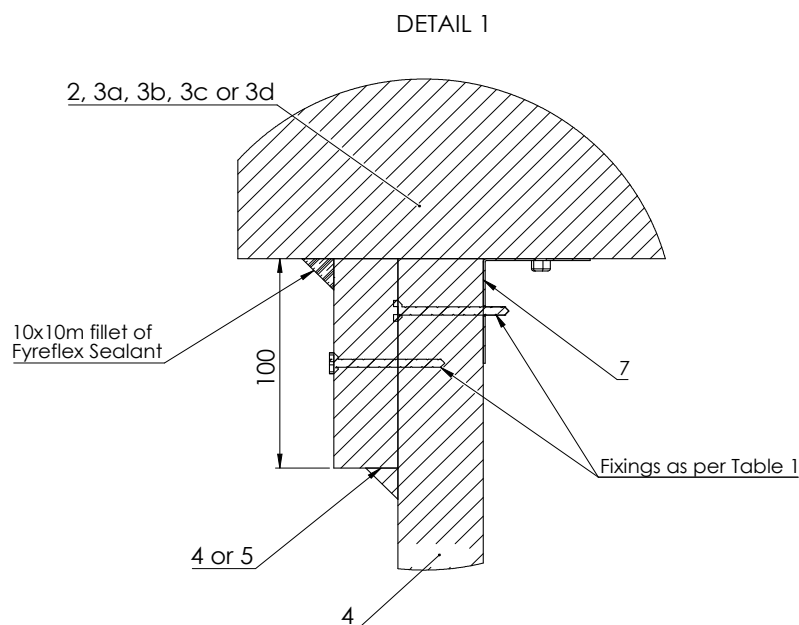
**Based on Report No.:**

**Checked By:**  
JH

☐ STANDARD DRAWING  
☐ PROJECT DRAWING



**Trafalgar Head Office:**  
PO BOX 545  
Chester Hill NSW 2162  
T: 1800 888 714  
F: 1800 201 500  
E: info@tfire.com.au  
W: www.tfire.com.au



NOTES:  
- Refer to test report FCO2586 Rev C for tables

**Drawing Name:** Maxilite butting to wall

**Test Standard:**  
AS1530.4

**Codes:**

**Revision:**

**Date:**

**No.:**

**NOTICE:**

**Project Title:** Maxilite - Generic Install

**Fire resistance level:**

**Drawn By:**  
MP

**Drawing No. :**  
13

**Sheet:**  
13 of 13

**Date:**  
17/01/2023

**Scale:**

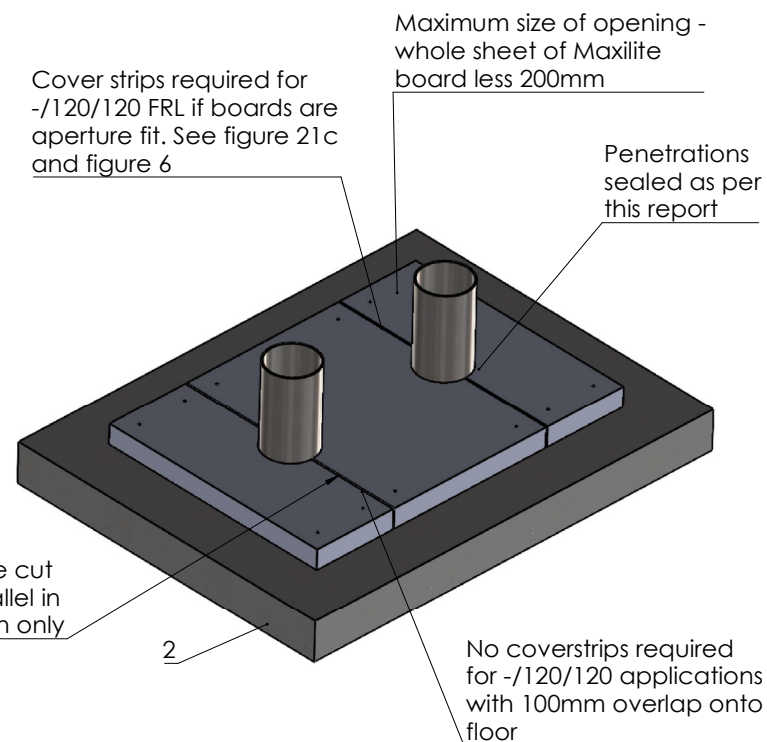
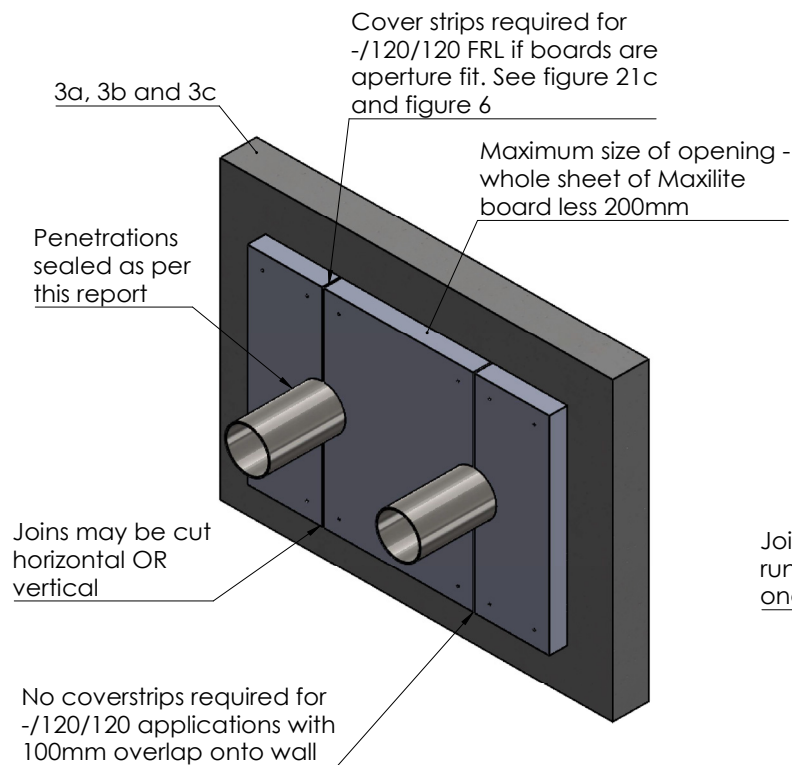
**Based on Report No.:**

**Checked By:**  
JH

☐ STANDARD DRAWING  
☐ PROJECT DRAWING

NOTE: ALL DIMENSIONS ARE IN MILLIMETRES (mm)  
**Trafalgar Head Office:**  
PO BOX 545  
Chester Hill NSW 2162  
T: 1800 888 714  
F: 1800 201 500  
E: info@tfire.com.au  
W: www.tfire.com.au

### Penetration systems in walls and floors



NOTES:  
- Refer to test report FCO2586 Rev C for tables & figures

**Drawing Name:** Maxilite fixed to wall/floor

**Project Title:** Maxilite - Generic Install

**Drawing No. :** 8  
**Sheet:** 8 of 9  
**Date:** 17/01/2023

**Scale:** NTS

**Test Standard:**

**Codes:**

**Revision:**

**Date:**

**No.:** **NOTICE:**

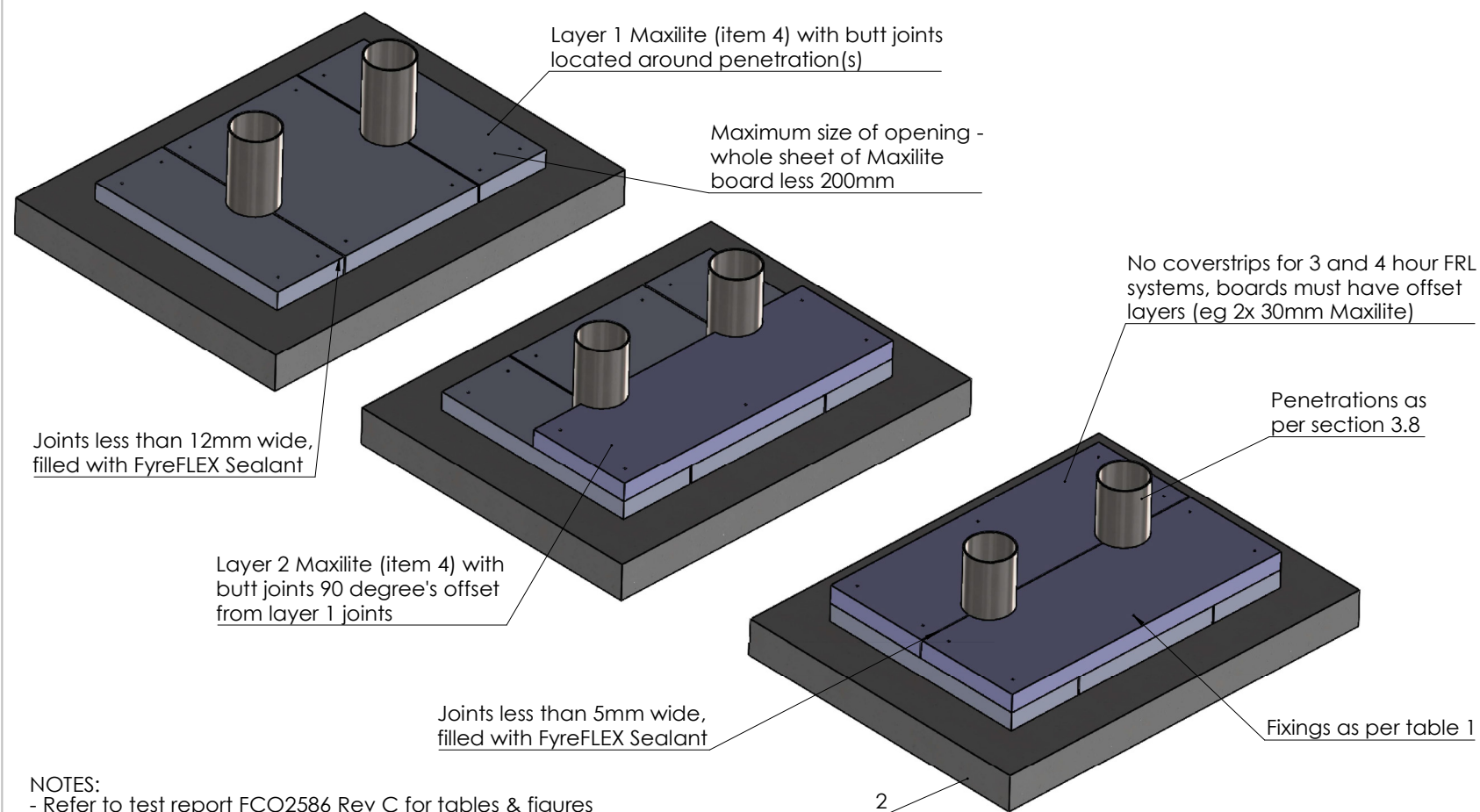
**Drawn By:** MP

**Checked By:** MP

☐ STANDARD DRAWING  
☐ PROJECT DRAWING



**Trafalgar Head Office:**  
PO BOX 545  
Chester Hill NSW 2162  
T: 1800 888 714  
F: 1800 201 500  
E: technical@group.com.au  
W: www.fire.com.au



NOTES:  
- Refer to test report FCO2586 Rev C for tables & figures

**Drawing Name:** Maxilite with butt joints

**Project Title:** Maxilite - Generic Install

**Drawing No. :** 9  
**Sheet:** 9 of 9  
**Date:** 17/01/2023  
**Scale:** NTS

**Test Standard:**

**Codes:**

**Revision:**

**Date:**

**No.:**

**NOTICE:**

**Drawn By:**  
MP

**Checked By:**  
JH

☐ STANDARD DRAWING  
☐ PROJECT DRAWING



**Trafalgar Head Office:**  
PO BOX 545  
Chester Hill NSW 2162  
T: 1800 888 714  
F: 1800 201 500  
E: technical@tgroup.com.au  
W: www.tfire.com.au