



FIRE RATED

SERVICE SHAFT ACCESS PANELS (FRSS)



NOTE: NOT FOR USE WITH NCC2019 or NCC2022 PROJECTS AFTER SEPTEMBER 2022



Trafalgar has the most extensive range of access panels available:

Small Sizes | Large Sizes | Custom Sizes
Tileable | Security | Acoustic | Fire Rated
Stainless Steel | Upward Opening | MDF
Touch Latch | Customwood | Service Shaft

taccess.com.au

05062024

FIRE RATED

Service Shaft Access Panels (FRSS)

Technical Specifications

Trafalgar Fire Rated Service Shafts are manufactured in Australia and have been designed for use in large openings in fire rated service shafts or risers where access is required for maintenance of services. They provide lockable access to services in these vertical shafts. Trafalgar FRSS panels have been fire tested to Australian Standard AS1530.4-1997 and have attained up to a four hour fire rating for shafts and comply with the National Construction Code (NCC / BCA) Clause C3.13, where 30 minutes fire insulation concessions apply.



For use in large openings in fire rated service shafts or risers.

Trafalgar Fire Rated Service Shafts are available with fire ratings of up to 4 hours. When installed they sit flush with the shaft wall surface leaving a neat opening around the perimeter. These panels are secured with an allen key style lock as standard, however a key lock option is also available.

It is easier to design and order standard sizes as these are readily available and competitively priced. However, other sizes can be manufactured to order.

Access panels are typically installed during construction, but they can also be retro-fitted when additional access is required.

Trafalgar specialise in manufacturing large **custom size** access panels with varying hinge and lock options to meet architectural specifications.

FIRE RATED

Service Shaft Access Panels (FRSS)

Technical Specifications

PRODUCT DESCRIPTION

FIRE RATING 2 Hour -/120/30
4 Hour - /240/30
Tested to AS1530.4-1997– suitable for existing buildings/upgrade works only after September 2022.

Door Panel Paint grade Trafalgar panel incorporating proprietary fire-resistant board material.

Frame Fully welded, fully primed steel.

Cut-Out Size Cut out a hole in the fire rated wall to suit the dimensions of the service shaft frame. For example, a 1200x600 service shaft will have a 1200x600 cut out.

Frame Types Flanged Edge (FE) or Wet Wall (WW)

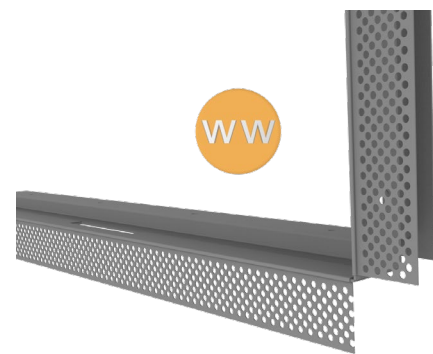
Hinge Exposed hinges.

Lock Budget square key lock as standard (Allen key style lock).

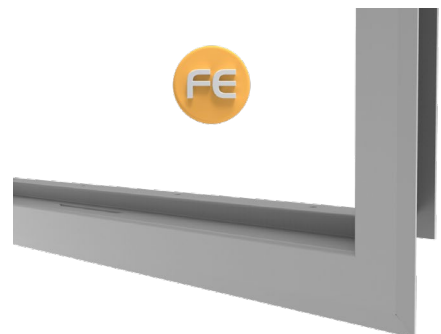
Key lock options available.

Also Available Trafalgar can custom manufacture to meet your specifications.

Trafalgar also supply a comprehensive range of metal, acoustic, customwood, security and speciality access panels.



Wet Wall Frame
(Set bead for plastering in)



Flanged Edge Frame
(Architrave / picture frame)

FIRE RATED

Service Shaft Access Panels (FRSS)

Ordering Information



2 HOUR FRSS PANELS

- Designed for large openings in service shafts and risers.
- Key lock option available.
- Easy installation.

2 HOUR FIRE RATED SERVICE SHAFT PANELS

Code	Size (mm)	Panel	Fire Rating	Frame
<u>STANDARD SIZES</u>				
FRSS2-6040	600 x 400	Proprietary Construction	2 hour -/120/30 AS1530.4-1997	Flanged Edge (Architrave) or Wet Wall (Set bead to plaster in)
FRSS2-9060	900 x 600			
FRSS2-9090	900 x 900			
FRSS2-12060	1200 x 600			
FRSS2-12090	1200 x 900			
FRSS2-15060	1500 x 600			
FRSS2-15090	1500 x 900			
FRSS2-18060	1800 x 600			
FRSS2-18090	1800 x 900			
FRSS2-21060	2100 x 600			
FRSS2-21090	2100 x 900			
<u>CUSTOM SIZES</u>				
FRSS2-Custom-WW	Any size up to 2100 x 900			
FRSS2-Custom-FE				

FIRE RATED

Service Shaft Access Panels (FRSS)

Ordering Information



4 HOUR FRSS PANELS

- Designed for large openings in service shafts and risers.
- Key lock option available.
- Easy installation.

4 HOUR FIRE RATED SERVICE SHAFT PANELS

Code	Size (mm)	Panel	Fire Rating	Frame
STANDARD SIZES				
FRSS4-6040	600 x 400	Proprietary Construction	4 hour -/240/30 AS1530.4-1997	Flanged Edge (Architrave) or Wet Wall (Set bead to plaster in)
FRSS4-9060	900 x 600			
FRSS4-9090	900 x 900			
FRSS4-12060	1200 x 600			
FRSS4-12090	1200 x 900			
FRSS4-15060	1500 x 600			
FRSS4-15090	1500 x 900			
FRSS4-18060	1800 x 600			
FRSS4-18090	1800 x 900			
FRSS4-21060	2100 x 600			
FRSS4-21090	2100 x 900			
CUSTOM SIZES				
FRSS4-Custom-WW	Any size up to 2100 x 900			
FRSS4-Custom-FE				

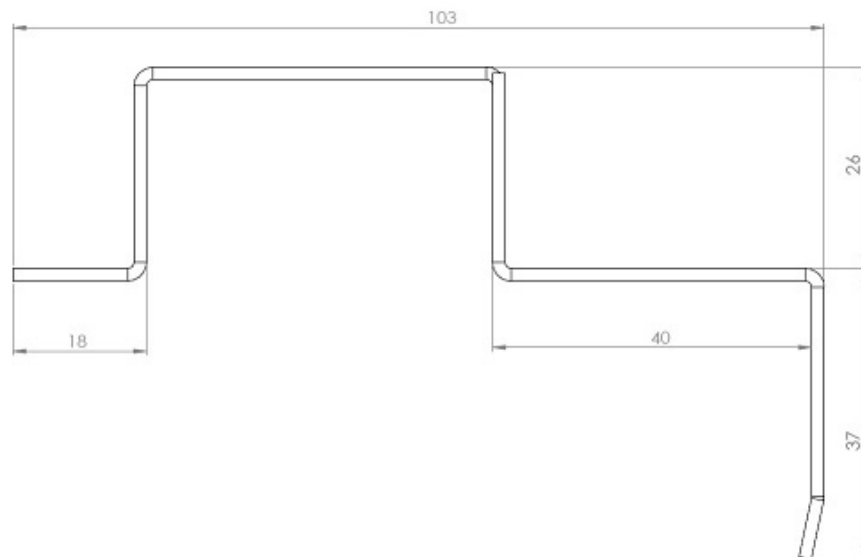
Trafalgar Fire Rated Service Shaft Panels must be installed into the service shaft in positions indicated on the architectural drawings, and in accordance with Trafalgar's installation instructions.

FIRE RATED

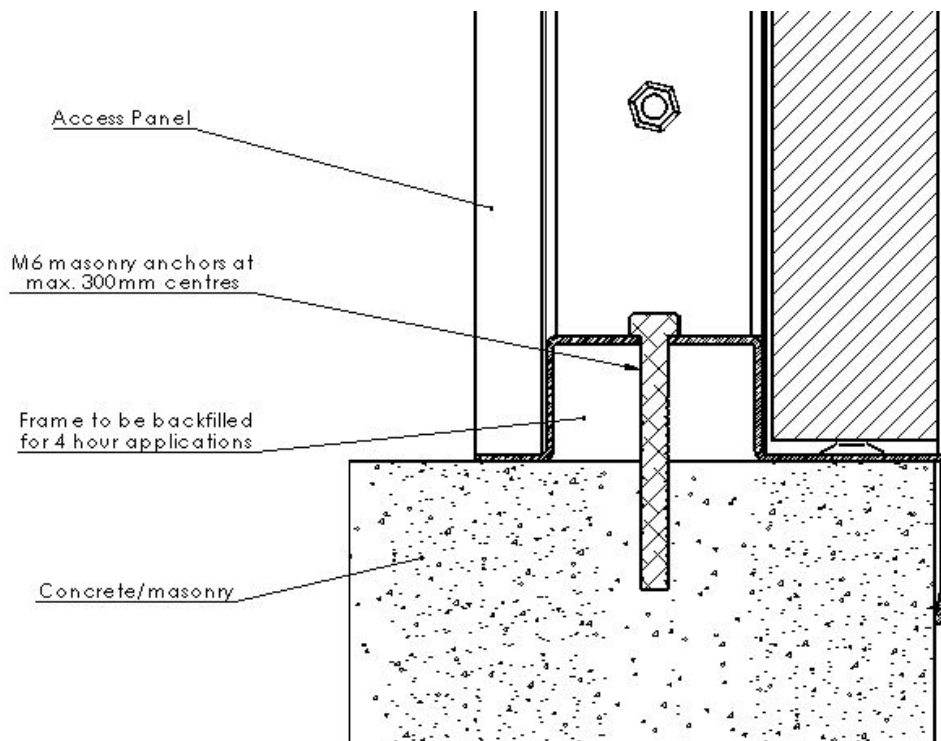
Service Shaft Access Panels (FRSS)

Installation Instructions

FRSS – Profile Details



FRSS – Masonry Install



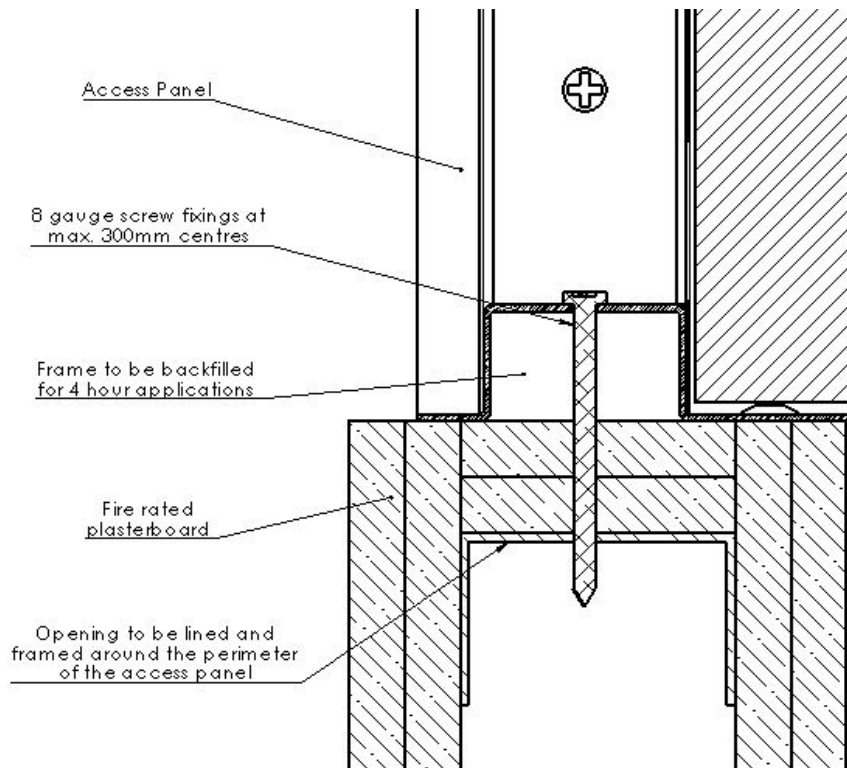
Trafalgar Fire Rated Service Shaft Panels must be installed into the service shaft in positions indicated on the architectural drawings, and in accordance with Trafalgar's installation instructions.

FIRE RATED

Service Shaft Access Panels (FRSS)

Installation Instructions

FRSS – Plasterboard Install



Installation Instructions

1. Mark out and cut an opening in the fire rated wall to suit the dimensions of the service shaft frame (eg. 1200 x 600), taking into account the position of existing framing where a plasterboard wall has been used.
2. With the panel of the service shaft in the open position, insert the panel into position and fix into place using the fixing holes on the inside of the frame with the appropriate fixings as detailed in the above drawings for masonry or plasterboard installations.
3. The panel **MUST BE** painted and sealed to ensure it is appropriately protected and it is fit for purpose.

NOTE:

- The installation of a Trafalgar Fire Rated Service Shaft does not require fire rated sealant.
- Trafalgar Fire Rated Service Shafts have been fire tested to the new and more stringent requirements of Australian Standard AS1530.4-1997.



Trafalgar has developed a range of **installation videos** to assist our customers. To view these step by step install videos please go to www.youtube.com and search for **Trafalgar TV**.
Subscribe and you will be notified when new videos are uploaded.

Trafalgar reserves the right to change specifications without notice. Please check with your supplier at the time of order. The information contained in this brochure was correct at the time of print. E&OE. Published 07.11.18