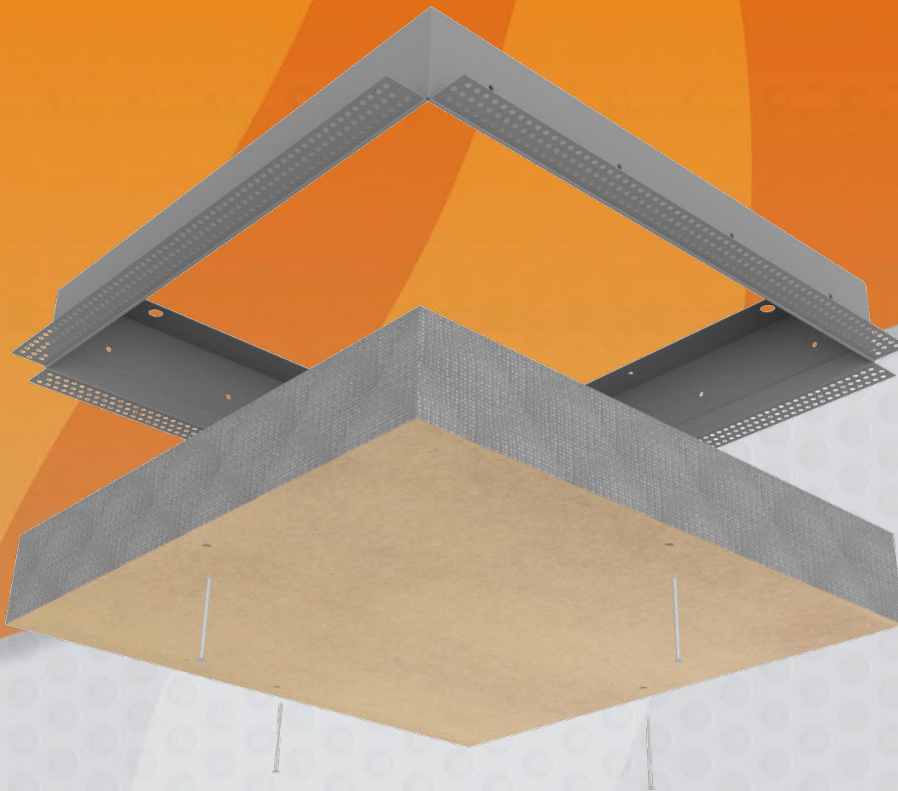




FIRE RATED

SCREW FIXED ACCESS PANELS (FRSF)



NOTE: NOT FOR USE WITH NCC2019 or NCC2022 PROJECTS AFTER MAY 2023



Trafalgar has the most extensive range of access panels available:

Small Sizes | Large Sizes | Custom Sizes
Tileable | Security | Acoustic | Fire Rated
Stainless Steel | Upward Opening | MDF
Touch Latch | Customwood | Service Shaft

taccess.com.au

FIRE RATED

Screw Fixed Access Panels (FRSF)

Technical Specifications

Trafalgar Fire Rated Screw Fixed Access Panels are manufactured in Australia and have been designed for use where very high fire ratings are required for access into wall and ceiling openings. They feature simple and reliable screw fixings which provide the added benefit of increased security. Trafalgar FRSF panels have been fire tested to Australian Standard AS1530.4 and have attained fire ratings up to four hours.



Attained fire ratings
up to 4 hours.

Trafalgar Fire Rated Screw Fixed Access Panels are available with fire ratings of two or four hours. When installed they sit flush with the wall leaving a neat opening around the perimeter.

It is easier to design and order standard sizes as these are readily available and competitively priced. However, other sizes can be manufactured to order.

Access panels are typically installed during construction, but they can also be retro-fitted when additional access is required.

Trafalgar specialise in manufacturing large custom size access panels with varying hinge and lock options to meet architectural specifications.

FIRE RATED

Screw Fixed Access Panels (FRSF)

Product Overview

PRODUCT DESCRIPTION

FIRE RATING 2 Hour -/120/120
4 Hour -/240/120
Tested to AS1530.4-2005 – suitable for existing buildings/upgrade works only after September 2022.

Door Panel Paint grade Trafalgar panel incorporating Maxilite high performance fire rated board.

Frame Fully welded, fully primed steel.

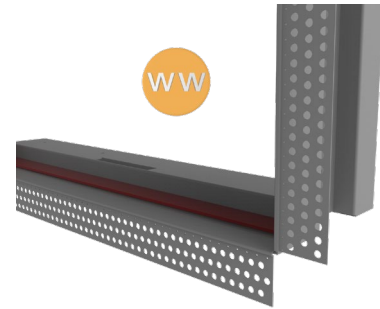
Cut-Out Size Cut out a hole in the fire rated wall the same size as the access panel. For example, a 450x450 access panel will have a 450x450 cut out.

Frame Types Flanged Edge (FE) or Wet Wall (WW)

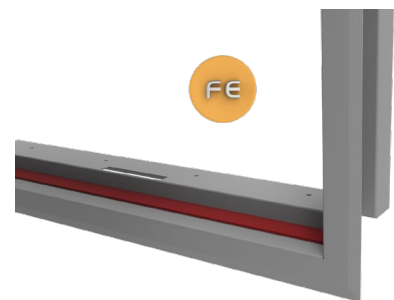
Fixing Screw fixed using re-usable screw fixings which are an integral part of the product design.

Also Available Trafalgar can custom manufacture to meet your specifications.

Trafalgar also supply a comprehensive range of metal, acoustic, customwood, security and speciality access panels.



Wet Wall Frame
(Set bead for plastering in)

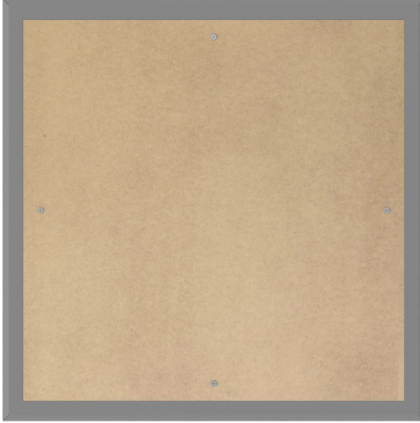


Flanged Edge Frame
(Architrave / picture frame)

FIRE RATED

Screw Fixed Access Panels (FRSF)

Ordering Information



2 HOUR FRSF PANELS

- For use in fire rated walls, ceilings and service shafts.
- Screw fixed using re-usable screw fixings.
- Added benefit of increased security.

2 HOUR FIRE RATED SCREW FIXED ACCESS PANELS

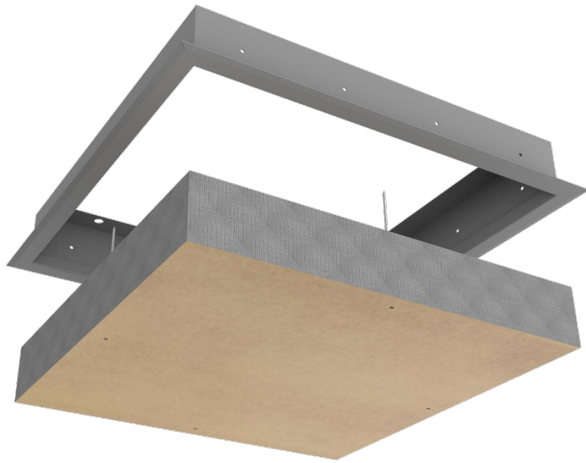
Code	Size (mm)	Panel	Fire Rating	Frame
<u>STOCK SIZES</u> FRSF2-300-FE FRSF2-450-FE FRSF2-600-FE	300 x 300 450 x 450 600 x 600	Laminated Maxilite Fire Rated Board	2 hour -/120/120	Flanged Edge (Architrave)
<u>CUSTOM SIZES</u> FRSF2-Custom-FE	Any size up to 1000 x 1000			
<u>STOCK SIZES</u> FRSF2-300-WW FRSF2-450-WW FRSF2-600-WW	300 x 300 450 x 450 600 x 600	Laminated Maxilite Fire Rated Board	2 hour -/120/120	Wet Wall (Set bead to plaster in)
<u>CUSTOM SIZES</u> FRSF2-Custom-WW	Any size up to 1000 x 1000			

Trafalgar Fire Rated Screw Fixed Access Panels must be installed into the wall, ceiling or service shaft in positions indicated on the architectural drawings, and in accordance with Trafalgar's installation instructions.

FIRE RATED

Screw Fixed Access Panels (FRSF)

Ordering Information



4 HOUR FRSF PANELS

- For use in fire rated walls, ceilings and service shafts.
- Screw fixed using re-usable screw fixings.
- Added benefit of increased security.

4 HOUR FIRE RATED SCREW FIXED ACCESS PANELS

Code	Size (mm)	Panel	Fire Rating	Frame
<u>STOCK SIZES</u>				
FRSF4-300-FE	300 x 300	Laminated Maxilite Fire Rated Board	4 hour -/240/120	Flanged Edge (Architrave)
FRSF4-450-FE	450 x 450			
FRSF4-600-FE	600 x 600			
<u>CUSTOM SIZES</u>				
FRSF4-Custom-FE	Any size up to 1000 x 1000			
<u>STOCK SIZES</u>				
FRSF4-300-WW	300 x 300	Laminated Maxilite Fire Rated Board	4 hour -/240/120	Wet Wall (Set bead to plaster in)
FRSF4-450-WW	450 x 450			
FRSF4-600-WW	600 x 600			
<u>CUSTOM SIZES</u>				
FRSF4-Custom-WW	Any size up to 1000 x 1000			

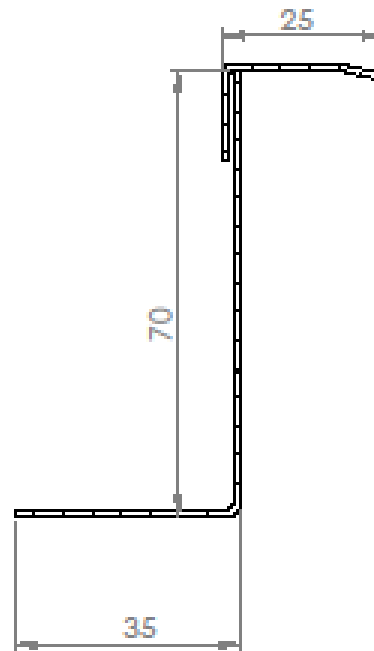
Trafalgar Fire Rated Screw Fixed Access Panels must be installed into the wall, ceiling or service shaft in positions indicated on the architectural drawings, and in accordance with Trafalgar's installation instructions.

FIRE RATED

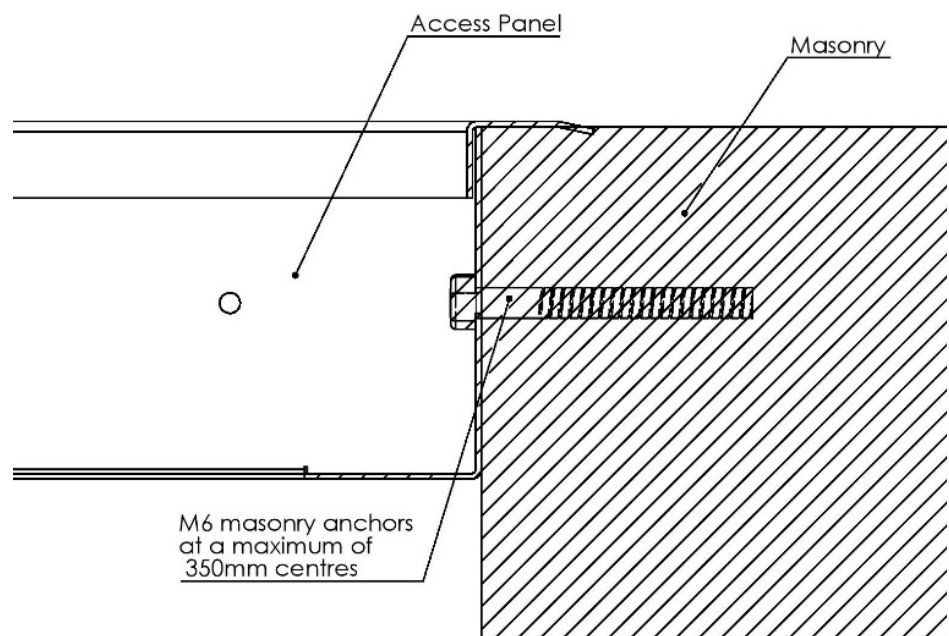
Screw Fixed Access Panels (FRSF)

Installation Instructions

FRSF – Profile Details



FRSF – Masonry Install

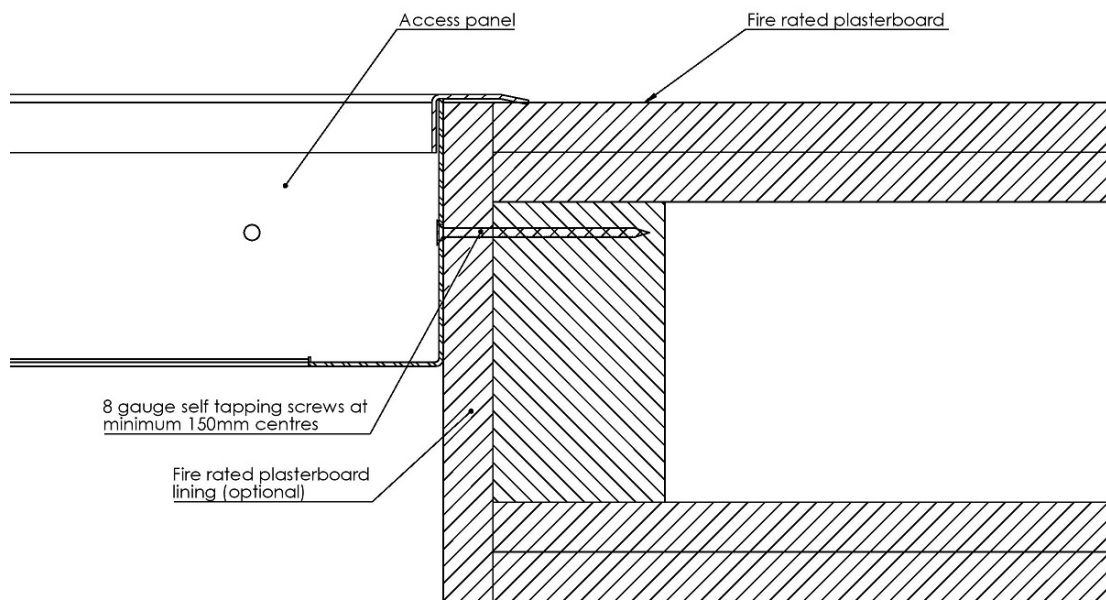


FIRE RATED

Screw Fixed Access Panels (FRSF)

Installation Instructions

FRSF – Plasterboard Install



Installation Instructions

1. Mark out and cut an opening in the fire rated wall or ceiling to suit the dimensions of the access panel (eg. 450 x 450), taking into account the position of existing joists. Note that for plasterboard installs, no fire rated plasterboard lining is required.
2. With the hatch of the access panel open, insert the panel into position and fix through the fixing holes in the frame into the surrounding framework, with fixings as detailed in the drawings above.
3. Once frame is in place insert the panel door and secure in place with fixing screws.

NOTE:

- The installation of a Trafalgar Fire Rated Service Shaft does not require fire rated sealant.
- Trafalgar Fire Rated Access Panels have been fire tested to the new and more stringent requirements of Australian Standard AS1530.4-2005.



Trafalgar has developed a range of **installation videos** to assist our customers. To view these step by step install videos please go to www.youtube.com and search for **Trafalgar TV**. Subscribe and you will be notified when new videos are uploaded.

Trafalgar reserves the right to change specifications without notice. Please check with your supplier at the time of order. The information contained in this brochure was correct at the time of print. E&OE. Published 01.09.15