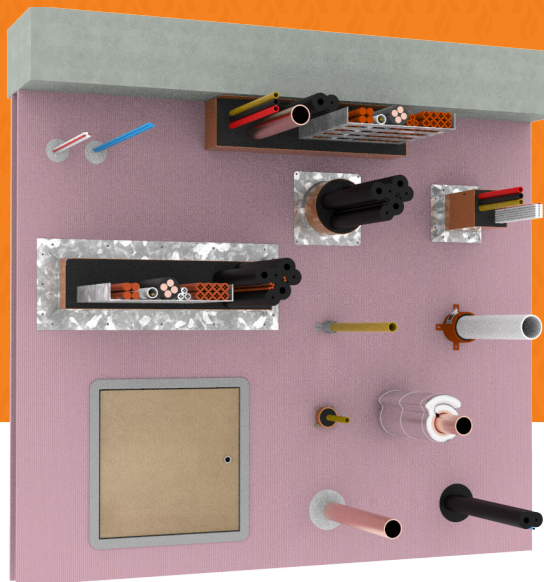


60MIN SINGLE LAYER Plasterboard Walls



60 minute single layer fire rated plasterboard walls are commonly used as apartment to corridor walls. All services passing through this thin wall type require specific fire tests to AS1530.4, and Trafalgar has the most comprehensive range of tested systems to offer for all commonly used building services. For all service penetrations we are proud to offer patch/pattress free fully fire tested systems as documented in this manual.



SYSTEMS

 **FyreBOX**MAXI

FyreBOXMINI

FyreFLEX

FyreBOXSLAB-MOUNT

FyrePEXHP

FyreCOLLARCONDUIT

FyreSHEATH

FyreCOLLARMIXED SERVICES


FyreSHIELD

FyreCOLLARPREMIUM RETROFIT

TWRAP

CLICK TO LEARN MORE

APPLICATIONS

 Electricians	Power cables Data cables PVC Conduits
HVAC&R	Insulated pipes Pair Coils Pair Coils Bundles
Plumbers	Copper and Steel pipes PVC pipes PEX pipes PEX-AL-PEX pipes
Active Fire Professionals	Steel Sprinkler pipes Fire cables

TRADES

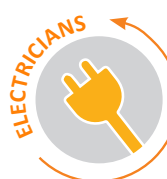


TABLE OF CONTENTS



Section		Page
Overview		1
Compliance		3
FRL Tables	FyreFLEX®	4
	FyrePEX™ HP & FyreSHEATH	5
	FyreBOX™ Slab-Mount	6
	FyreBOX™ Maxi & Mini	7
	FyreCOLLAR Conduit Fire Collar & Premium Hinged Retrofit Collar	8
	FyreCOLLAR Mixed Services Collar	9
	FyreSHIELD™ Access Panel	10
Related Systems		11

COMPLIANCE



COMPLIANCE WITH THE NATIONAL CONSTRUCTION CODE (NCC)

Formerly known as BCA

Single layer fire-rated plasterboard walls are becoming increasingly popular across the Australian building industry due to the reduction in overall wall thickness and their ability to provide a-/60/60 or greater fire rating as required for partition walls in many residential apartments and other applications.

Trafalgar Fire is committed to innovation within the passive fire industry developing new products and existing technologies, specifically designed to maintain the fire resistance level (FRL) of service penetrations through single layer plasterboard wall systems. As a result, Trafalgar are proud to advise pattress (or patch) free approvals in 60-minute single layer fire-rated plasterboard walls.

Single layer plasterboard walls are generally thinner than the more traditional double layer plasterboard walls. AS1530.4 does not allow the use of test data from double layer walls to be applied to single layer plasterboard walls, and requires any penetration through a thinner wall system to be fire-tested specifically to determine the FRL of the penetration. The Trafalgar products in this datasheet have been tested specifically in single layer wall systems and are fully compliant under the National Construction Code (NCC).



Images of Single Layer Plasterboard wall test to AS1530.4- 2014



Fyre SEALANT RANGE

FyreFLEX® SEALANT



Applications	Trade Icons	System	Details	FRL	Report Reference
Small Cable Bundles		FyreFLEX®	For specific system and FRL details refer to the: FyreFLEX® for Electricians Technical Manual FyreFLEX® for Plumbers Technical Manual TWRAP™ Technical Manual Available from the Trafalgar Fire Knowledge Centre Technical Manuals page on the website.	13mm Single-layer fire rated -/60/60 Wrap Free system	FAR 4849
				16mm Single-layer fire rated -/90/90 Wrap Free system	
Large Cable Bundles				13mm Single-layer fire rated plasterboard with additional 13mm fire rated plasterboard patch* -/60/60 Wrap Free system	FAS 220102
				16mm Single-layer fire rated plasterboard * -/90/60 Wrap Free system	
Steel Pipes up to 100mm			13mm Single-layer fire rated -/60/60**	FCO 1579	
			16mm Single-layer fire rated -/90/90**		
Copper Pipes up to 100mm			13mm Single-layer fire rated -/60/60**		
			16mm Single-layer fire rated -/90/90**		

* Half wall system- Service entering and exiting the same side of the wall

** For insulation rating, [TWRAP™](#) must be installed around the system for varying length on either side of the wall depending on service.



Fyre SEALANT RANGE

FyrePEX™ HP
INTUMESCENT SEALANT



FyrePEX^{HP}

FyreSHEATH

Applications	Trade Icons	System	Details	FRL	Report Reference
PEX water and gas Pipes up 20mm		FyrePEX™ HP and FyreSHEATH	For specific system and FRL details refer to the: FyrePEX™ HP Technical Manual TWRAP™ Technical Manual	13mm or 16mm Single-layer fire rated plasterboard -/60/60** Wrap Free system	FAR 4849
		FyrePEX™ HP		13mm Single-layer fire rated plasterboard with additional 13mm Fire rated plasterboard patch * -/60/60 Wrap Free system	FAS220102
Air-conditioning bundle (FR or PE insulation)		FyrePEX™ HP	Available from the Trafalgar Fire Knowledge Centre Technical Manuals page on the website.	13mm or 16mm Single-layer fire rated plasterboard -/60/60 Wrap Free system	FAR 4849
				13mm Single-layer fire rated plasterboard with additional 13mm Fire rated plasterboard patch * -/60/60 Wrap Free system	FAS220102

* Half wall system - Service entering and exiting the same side of the wall
** -/90/90 can be achieved with patch on 16mm plasterboard (tested system).

PEX Water and Gas Pipes Up 20mm	Air-conditioning Bundle (FR or PE Insulation)	Half Wall System including Air-conditioning Bundle (FR or PE Insulation)	Half Wall System including PEX Water and Gas Pipes up to 20mm

FyreBOX™ RANGE

FyreBOX™ Slab-Mount MIXED SERVICE PENETRATION



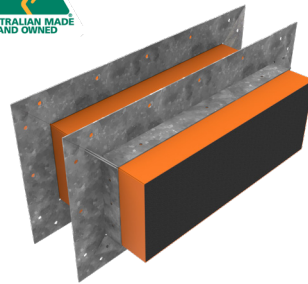
Applications	Trade Icons	System	Details	FRL*	Report Reference
<p>Apartments services.</p> <p>Any quantity of typical apartment entry services:</p> <ul style="list-style-type: none">• Electrical and Data Cables• PVC Conduit• PEX water• Gas PEX Pipes• Insulated Pair Coil• Sprinkler Pipes• Etc	 	<p>FyreBOX™ Slab-Mount sizes:</p> <ul style="list-style-type: none">• 160 x 125mm• 350 x 125mm• 550 x 125mm• 650 x 125mm• Custom up to 1100 x 125mm	<p>Installed to the slab soffit before the walls are constructed.</p> <p>Allows service trades to run their pipes and cables quicker/sooner, speeding up build time and reducing risk of defects on site.</p> <p>Rw50 acoustic rating.</p> <p>For specific system and FRL details refer to the: FyreBOX™ Slab-Mount Technical Manual</p> <p>Available from the Trafalgar Fire Knowledge Centre Technical Manuals on the website.</p>	<p>13mm Single-layer fire rated -/60/60</p> <p>16mm Single-layer fire rated -/90/90</p>	<p>FCO10266-001</p>

*Depending on the thickness of the studs, and the service configuration [TWRAP™](#) may be required. Refer to the product manuals or contact Trafalgar Fire for more information.

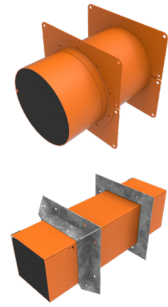


FyreBOX™ RANGE

FyreBOX™ Maxi & Mini MIXED SERVICE PENETRATION



FyreBOX MAXI



FyreBOX MINI

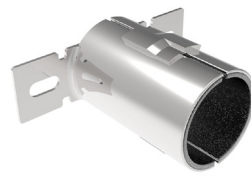
Applications	Trade Icons	System	Details	FRL*	Report Reference
<p>Small services including:</p> <ul style="list-style-type: none"> • Electrical and Data Cables • PVC Conduit • PEX • Gas PEX Pipes • Insulated Pair Coil 	 	<p>FyreBOX™ Mini Range:</p> <ul style="list-style-type: none"> • 100mm diameter • 150 mm diameter • 65x65mm square • 100x100mm square 	<p>Mounted anywhere in the wall with steel mounting flanges (FyreFLANGE™), hinged for easy retrofit.</p>	<p>13mm Single-layer fire rated -/60/60</p>	FC10266-001
<p>Large services bundles mixed services including:</p> <ul style="list-style-type: none"> • Insulated/Bare Copper or Steel Pipes • Cable Trays and Conduits • Electrical and Data Cables • PVC Conduit • PEX • Gas PEX Pipes • Insulated Pair Coil 	 	<p>FyreBOX™ Maxi Range:</p> <ul style="list-style-type: none"> • 350x125mm • 550x125mm • 650x125mm • 750x125mm • 1100x125mm 	<p>For specific system and FRL details refer to the:</p> <p>FyreBOX™ Maxi and Mini Technical Manual</p> <p>Available from the Trafalgar Fire Knowledge Centre Technical Manuals page on the website</p>	<p>16mm Single-layer fire rated -/90/90</p>	

* For insulation rating, [TWRAP™](#) must be installed around the system on both sides of the wall depending on service configuration.

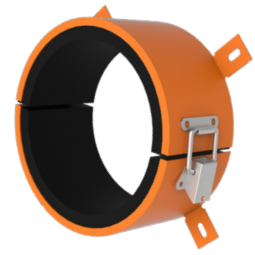


FyreCOLLAR RANGE



CONDUIT FIRE COLLAR & PREMIUM HINGED RETROFIT COLLAR



FyreCOLLAR CONDUIT



FyreCOLLAR PREMIUM RETROFIT

Applications	Trade Icons	System	Details	FRL	Report Reference
PVC Conduits up to 50mm		FyreCOLLAR Conduit FyreCOLLAR Premium Hinged Retrofit	For specific system and FRL details refer to the: FyreCOLLAR Technical Manual Available from the Trafalgar Fire Knowledge Centre Technical Manuals page on the website	13mm Single-layer fire rated -/60/60 Wrap Free system	FC11190
PVC Pipes up to 100mm				16mm Single-layer fire rated -/90/90 Wrap Free system	
PEX water and gas pipes up to 25mm				13mm Single-layer fire rated -/60/60 Wrap Free system	



FyreCOLLAR CONDUIT

FyreCOLLAR PREMIUM RETROFIT

FyreCOLLAR CONDUIT

FyreCOLLAR RANGE

MIXED SERVICES COLLAR



Applications	Trade Icons	System	Details	FRL	Report Reference
Air Conditioning bundle up to ¾ & 3/8 inch, with PE or FR insulation: <ul style="list-style-type: none">FR Pipe insulation up to 25mm thicknessPE Pipe insulation up to 19mm		FyreCOLLAR Mixed Services Collar	For specific system and FRL details refer to the: FyreCOLLARMixed Services Technical Manual	13mm Single-layer fire rated -/60/60 Wrap Free system	FC11190
Refrigeration pipes: <ul style="list-style-type: none">Single copper pipes up to 20mm with FR insulation			Available from the Trafalgar Fire Knowledge Centre Technical Manuals page on the website	16mm Single-layer fire rated -/90/60 Wrap Free system	
Power cable: <ul style="list-style-type: none">TPS cables up to 2.5mm²3C+E cables up to 2.5mm²				-/90/90*	
Data cable: <ul style="list-style-type: none">CAT6 6mm OD					








*[TWRAP™](#) is required to be wrapped on both sides of the penetration as part of the tested system.



FyreSHIELD™

ACCESS PANEL



Applications	Trade Icons	System	Details	FRL	Report Reference
Access Panel Plasterboard Wall		FyreSHIELD™ PLUS access panel up to 600x600mm	For specific system and FRL details refer to the: FyreSHIELD™ Technical Manual	13mm Single-layer fire rated -/60/60*	FAS200221
	  				
		FyreSHIELD™ Access Panel up to 600x600mm	Available from the Trafalgar Fire Knowledge Centre Technical Manuals page on the website	16mm Single-layer fire rated -/90/30* (Shaft and walls)	
	 				

* Available by thickening the wall with an additional layer of plasterboard around the penetration on both sides of the wall.



RELATED SYSTEMS

FyreBOX MINI



FyreBOX MAXI



FyreBOX SLAB-MOUNT



FyreSHIELD



FyreFLEX



FyrePEX HP



FyreSHEATH



FyreCOLLAR PREMIUM RETROFIT



FyreCOLLAR CONDUIT



TWRAP

